



The Palette

BURLINGAME ART SOCIETY



Committee Chairs

President

~ DIANA DAY GLYNN

Vice President

~ [Position Open](#)

Treasurer

~ BARBARA ALGER

Recording Secretary

~ BARBARA LAMBERT

Programs

~ ANNA MURPHY/

~Diana Glynn

Monthly Awards

~ LEONA MORIARTY

~ MARIA SKY

Membership

~ LISA GALAVIZ

Special Event Coordinator

~ GLORIA MUELLER

Exhibits & Palette Editor

~ DIANA DAY GLYNN

Website Editor

~ SOFIA MEDEIROS

Hospitality Coordinator

~ MARIA SANCHEZ

Scholarships

~ MARY MEISSNER

Publicity

~ [Position Open](#)



Come join us for our next BAS meeting on
Saturday, September 13, 2025 (1:30 to 4:00 pm)
Burlingame Community Center (Fine Arts Room)
850 Burlingame Ave., Burlingame.
Hope to see you there.....

UP NEXT

For our first demonstration meeting, back from our summer break, we will welcome oil painter Aina Clotas. Born in Catalonia, Spain, Aina considers herself a figurative painter and is now living in California with her oil painter husband, Joseph Altwer. Currently teaching at the College of San Mateo, she also co-runs the art studio, Nuance Fine Art in Half Moon Bay with her husband Joe.

After attending an undergraduate filmmaking course, Aina received her BFA from the Universitat de Barcelona in 2012. To further her training, she studied traditional painting methods at the Barcelona Academy of Art, graduating in 2015. She then taught at the Barcelona Academy of Art, La Salle University and the Florence Academy of Art in Sweden.

Aina will demo a still life painting for us, as potraits take more time, but you can check out her work at: ainaclotas.com



***ATTENTION:** Committee Members, please note the meeting time change.

Committee Meeting will be September 11, 2025 at 3:30pm

President's Message

Dear Members,

Hopefully you've been enjoying the summer during our two month break. I know I've enjoyed this year's mild summer weather and the BREAK, but now that it's over we get to go back to our wonderful monthly meetings, starting with a demo by Aina Clotas, which I am eager to see. Also we have our 29th Annual Art Show to look forward to in November...hope you're all working toward your entries.

Looking forward to seeing your friendly faces soon...

Diana



Late Summer Art Shows

- ~ Society of West-Coast Artists (SWA), 527 San Mateo Ave., San Bruno
"Signature Member Show", now thru September 26 (includes BAS members)
- ~ Peninsula Outdoor Painters (POPs), Twin Pines Art Center, at 10 Twin Pines Lane, Belmont....."Local Light", September 3rd to 28th (group show includes BAS members)
- ~ The Pacific Artistry Showcase (SWA Online show), Sept. 2nd till Oct. 31st
To view the show go to... showsubmit.com/galleries...then search for SWA The Pacific Artistry Showcase, not until Sept. 2nd (includes BAS members)

BAS Volunteers

As a reminder to all... the Burlingame Art Society is solely managed by volunteers, which means we can always use more help with jobs that need to be done to keep us going. We hope that you will consider joining the wonderful group of volunteers that take on these tasks. For more information please feel free to speak with anyone on the BAS Leadership Committee.

MANY HANDS MAKE LIGHT WORK!

BAS Membership

If you know anyone interested in joining BAS, let them know that if they join in September for the prorated amount of \$25 they can enjoy three more demo meetings, our Holiday/Critique meeting & also participate in the BAS 29th Annual Show in November.

~~~~~  
Remember: In order to compete in the BAS monthly painting competitions, you must be a paid member for the year.

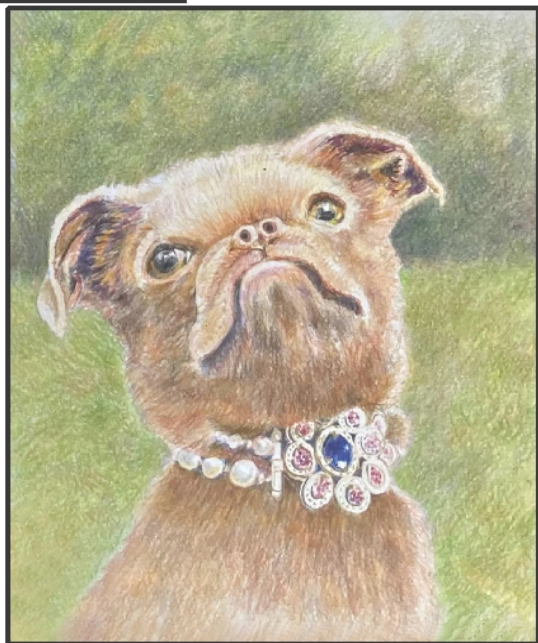




# June Ribbon Winners

2nd Place

1st Place



Susan Pizzi "Rich Bitch"



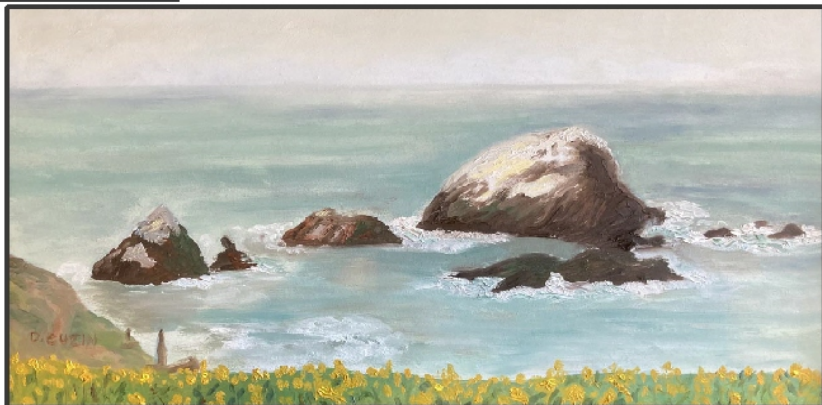
Carlos Hurtado "Cooper"

Honorable Mention &  
Popular Choice



*Photos by  
Diana Day Glynn*

3rd Place



Danielle Cuzin "Lands End"



Lisa Galaviz  
"Coral Flowering Cactus"





He mixes his own greens with Ultramarine & yellow or yellow ochre and adds red to get grayer greens. Joe mentioned the new, Michael Harding "Miracle Medium" which is non-toxic and is a great replacement for turpentine or other toxic mediums. He also suggested a good book "John Carlson's Guide to Landscape Painting". Joe and his wife Aina are very supportive of each other and their art. He even told us that we are in for a treat, since Aina will be doing our September demonstration..... and he humbly said that she is so much better than he.....How cute is that?

## MEETING RECAP

We very much enjoyed our June general meeting with oil painter Joseph Altwer demonstrating his painting style. Usually painting en plein air, Joe brought a previously done painting that he recreated for us. He explained his palette and gave many suggestions for color mixing, one being that he likes mixing with his brush rather than with a palette knife because the color is kind of broken rather than flat.



## One More Little Reminder

It's September, which means it's time for our favorite art store, California Art Supply's, annual "Wee Art Open". On display are over 100 mini paintings by local artists just waiting for all Cal Art customers to come and vote for their favorites. So stop by, check out the show (which includes a bunch of BAS members) and place your votes by September 30th. They will then count the votes and let us know the winners in their October newsletter. It's a lot of fun...



Offers a 10% discount if you mention being a BAS member at the point of purchase.  
Open Mon-Sat 9.30-7 pm, Sun 11:00-5 pm

[burlingameartsociety.org](http://burlingameartsociety.org)



Burlingame Art Society  
P.O.Box 1754  
Burlingame. Ca 94010