



THE PALETTE

BURLINGAME ART SOCIETY

SEPTEMBER 2011



2011/2012

Current Officers & Committee Chairs

PRESIDENT

Pat Barr 650-344-8972
pjmacbarr@sbcglobal.net

VICE PRESIDENT/PROGRAMS

Susan Pizzi 650-342-0604

2nd VP & RECORDING SECRETARY

Rose Nieponice 650-401-8784
rose.nieponce@sbcglobal.net

TREASURER

Dawn Mulliken 650-342-5554
demulliken@aol.com

PUBLICITY CHAIRPERSON

Pat McMorrow 650-348-5049
pbackdoorart@aol.com

EXHIBIT CO-CHAIRS

Pat Knowles 650-347-9404
flrgirl@mac.com

Diana Day-Glynn 650-678-0850
dayglynn@aol.com

HOSPITALITY

Nancy Stirm 650-579-2794
painting-crow@comcast.net

HOSPITALITY ASSISTANT:

Marilynne Genis 650-692-0409
mgenis@me.com

PALETTE & WEBSITE EDITOR

Sofia Medeiros 650-689-5111
sofiaes@aol.com

EDITOR ASSISTANT

Open.....Volunteer Please

MONTHLY AWARDS

Brian Harvey 650-347-7252
hopeandbrian605@gmail.com

HISTORIAN

Fred Sinclair 650-343-4453

BOARD ADVISORS

Arnold Goldman 650-697-5000

Doris Stirm 650-647-0234

Don Mulliken 650-342-5554
damulliken@aol.com

ANNA O'NEILL SCHOLARSHIP CHAIR

Teresa Silvestri 650-654-2766
TeresaPPup@aol.com

BAS member, Doug Bell, will be our guest artist in September. Doug had an opportunity to visit Moscow, Russia in June 2011. He will present a visual report of his visit to the Tretyakov Art Museum, (the "other" art museum in Russia, besides the Hermitage in St. Petersburg).

The Tretyakov Gallery is the national treasury of Russian fine art, and according to Russian literature, one of the greatest museums in the world. The museum was formed in 1856, and named after its founder, Pavel Tretyakov, a wealthy Moscow merchant. It is located about one mile south of Red Square. More than 150,000 paintings and sculptures, exclusively by Russian artists, are displayed. The art is primarily from the early 1800's to the present, spanning the era of the Tzar, Soviet Era and now the "Progressive Era."

This visit was a once in a lifetime experience for Doug as he was finally able to see the original paintings of his favorite Russian artists which he has studied and learned from for many years. Doug will show slides of the museum and talk about 4 - 5 artists who are considered among the greatest of the Russian painters including Ivan Kramskoi, Ilya Repin, Valentin Serov, Issac Levitan and Nicolai Fechin.

Doug will spend a little time, if available, to show a few slides of Moscow streets and Red Square scenes which will provide a flavor of how things are changing in the "new Moscow."

Next B.A.S. Meeting

Wednesday, September 7, 2011

7:00 - 9:00 p.m.

Lions Hall, 990 Burlingame Ave., Burlingame

Members, guests and the

general public are invited.

Light refreshments will be served.

September B.A.S. Board Meeting

to be held at Lions Hall at 5:30 pm

Wednesday, September 7, 2011

PRESIDENT'S MESSAGE

BAS has had a very full summer. We started with a show of works in the dining room of Sterling Court, a new venue for us, thank you Fred Sinclair.

Our display at the US Bank was exchanged, as happens every two months.

At the same time we took part in Burlingame's Art in the Park. Our booth was representative of a variety of talents. Sales were made. Lovely day.

Additionally, BAS was invited to display in another new venue, Peninsula Ballet Theatre which is located at Concar Drive and Grant Street in San Mateo. This show has been hung in the reception area of the center. It is a very active facility and offers an extensive viewing opportunity.

All of the above events were co-ordinated and hung by Lynne Flodin and Pat Knowles. They have given a huge amount of time and talent to give us wonderful exposure. We can't thank them both enough.

Several of our members entered their work in the San Mateo County Fair and were the winners of a good number of rewards. This was reported in the San Mateo County Times article by Carolyn Livengood. BAS was also singled out for coverage on the Burlingame Patch website (check it out). And while you are on line, look at our own website to see photos of members taking part in Burlingame's Music in the Park, where they painted indoors and out, and created a good show of their work. We have our efficient Publicity chairman Pat Mc Morrow to thank for getting this coverage.

All this great, intense activity happened in June and July, so August was a month of rest.

We will start, refreshed, on September 8, with our regular meeting at 7:00pm at the Lion's Club, as usual. The Board will meet September 8, at 5:30pm, at the Lion's Club.

Members who knew Jennilee Cinti will be sorry to learn this long time member has passed away.

I hope you all had a terrific summer. *Pat Barr*

"Jennilee Cinti was a very accomplished woman and admired by many. She was an oil painter in my Tuesday afternoon class. We all looked forward to her coming to class with yet another creative idea to put on her canvas. She generously offered the Open Studio group her home to set up our tents in her yard a few years ago. What an enjoyable weekend that turned out to be. She will be missed by her friends."

Leona Moriarty

September is the month to pay annual dues
Yearly membership dues are \$35.00.

A couple may join for \$45.00/year
The membership form shown below can
also be downloaded from our website
www.burlingameartsociety.org.

Please go to the "Membership" page and
mail it along with your check to:



Burlingame Art Society
P.O. Box 1754
Burlingame, CA 94010



You may also pay at the monthly meeting.

Lynne Flodin has recently resigned from the BAS board. As we well know, for years Lynne has done the work of a small army when it comes to BAS events such as The Spring Art Show, Art in the Park, Music in the Park, Monthly Art Exhibits, Holiday Awards Luncheon, Palette editor....well, too many to list them all! Her enthusiastic participation and guidance will be missed. BAS thanks Lynne for all her years of dedication! Diana Day-Glynn will be taking over for Lynne Flodin as the Exhibits Chair along with Pat Knowles. Lynn's resignation also leaves the position of Palette editor's assistant open. Please contact Sofia Medeiros (sofiaes@aol.com) if you would like to help with the monthly newsletter.

September:

EVENTS

➡ Diana Day Glynn exhibit at Burlingame City Hall continues through September.

➡ BAS will be exhibiting at the Burlingame Park and Rec. Center September and October.

October:



➡ BAS Wine & Cheese Critique on October 5th.

➡ Sterling Court has invited our members to an artist's reception on October 14 and October 21 from approximately 5:00 to 7:00. The exhibit is by Artists of the Covenant of Menlo Park with a theme of Rhythm and Patterns in Nature. There will be live music and an open bar. Our club, along with the general public, is invited.



Popular Choice
"First Violin"
by Marilynne Genis



1st Place
"Oriental Poppies"
by Gay Gentry



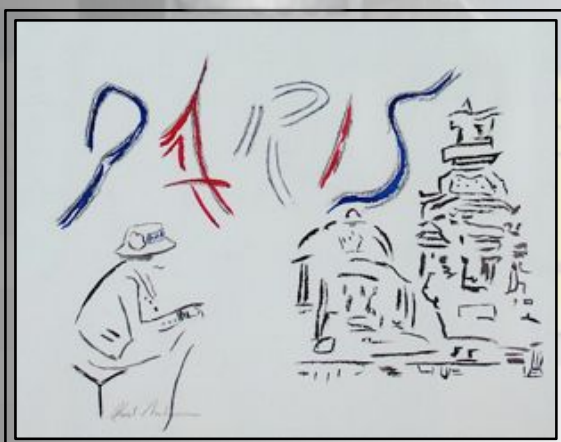
Honorable Mention
"Daisy"
by Lee Osborne



Photos by JD Crayne
www.JDCraynephoto.com



2nd Place
"Anthony"
by Susan Pizzi



Honorable Mention
"Paris"
by Bob Anderson



3rd Place
"Bettys"
by Fred Sinclair



Kay Duffy gave us a lesson in collage at our June 2011 BAS meeting. Kay is a watercolorist who uses collage to create wonderful impressionistic paintings. Kay saves boxes of collage materials: rickrack, foils, "shiny stuff," tape, wrapping paper, and specialty papers. She also

tears moistened watercolor paper to make abstract shapes, waves, etc. "Lately I've been having fun putting words in," said Kay as she held up prints with Japanese text. Kay also displayed a *happy face* watch collage using nothing but pictures of clocks, with hands set at ten minutes to two. This time configuration is sometimes called, "Smile Time," because the clock hands form a natural smile. Kay added the text, "Save time" and "Observe the time and fly from evil."

Kay displayed many types of papers that she uses in her collages. She showed us paper with fibers, rice paper, papers made of mulberry fibers, and lacy papers. Some papers had flecks of silver or gold. Kay likes to browse through the Daniel Smith Catalogue for papers that are absorbent, thin, translucent and cheap. As a base for her collages, Kay uses old paintings (covered with gesso), illustration board, and Aquarius paper. Acrylic Mat Medium is used as glue to adhere her papers. Kay uses water to thin down the medium transforming it from a yogurt consistency to a thinner milk consistency. When using the thinner, absorbent papers, the glue is applied to the top. Heavier papers require the glue to be applied underneath and then rolled to remove excess glue and air bubbles. Kay also likes to add "glittery stuff" and glitter glue.

We were also treated to a demonstration showing how Kay creates her own abstract colored papers using Gache, watercolor crayons and water. Pat Knowles volunteered to try her hand at Kay's technique, and created some beautiful abstract watercolor backgrounds.

"Design and layout are import in a collage composition," instructed Kay, "but there are no rules. Do what pleases you. If you're not happy with what you've done, erase it by gluing a white piece of paper over the top. Failures are opportunity. Cut them up and make cards out of them. Never throw them out."

Thank you to Kay Duffy for a fun and inspirational evening. Please visit Kay's website: www.kayduffywatercolors.com

CONGRATULATIONS S.M. COUNTY FAIR WINNERS



Top winner:
Lily Raga Abbott
Best of Show,
plus two 1st place awards

Teresa Silvestri
featured "Artist of the Year"
plus 1st prize in watercolors

George Dumandan
1st prize, "S.M. County Scenes"
3rd prize, Black and White

Brian Harvey
1st place in "Oils"

Pat McMorro
1st place,
"Excellence in Pastels"

Nancy Stirm
2nd place, Oils

Deb Sullivan
1st & 3rd place,
plus Honorable Mention in Oils.

Members also helped move and hang over 700 pieces of art. John McMorro mounted the lights for the "CARRY THE LIGHT" theme.



BAS would like to welcome new members:

Patricia BeBeau
Bobbi Landucci

Dawn Mulliken
sold a painting at Music in the Park.
Congratulations Dawn!



BURLINGAME ART SOCIETY
P.O. BOX 1754
BURLINGAME, CA 94010



www.burlingameartsociety.org



Music in the Park 2011

Please see the BAS website for more photos

Burlingame Art Society Membership Form September 1, 2011

All members are requested to fill out information below and submit with yearly dues.

Yearly membership fee: \$35.00 single/ \$45.00 for couples

Please make checks payable to:

BURLINGAME ART SOCIETY

P.O. Box 1754, Burlingame, CA 94010

➡ Download form from Membership page at www.burlingameartsociety.org

Name	_____
Address	_____
Telephone #	_____
E-Mail	_____
Fax #	_____
Preferred Medium	_____
Comments	_____

Name, Address, Phone Number, E-Mail, and Fax Number will be in the B.A.S. Roster.

This information will be omitted from the roster by request only.

Please remove the following from Roster: _____

Burlingame Art Society Membership Form September 1, 2011

All members are requested to fill out information below and submit with yearly dues.

Yearly membership fee: \$35.00 single / \$45.00 for couples

Please make checks payable to:

BURLINGAME ART SOCIETY

P.O. Box 1754, Burlingame, CA 94010

➡ Download form from Membership page at www.burlingameartsociety.org

Name	_____
Address	_____
Telephone #	_____
E-Mail	_____
Fax #	_____
Preferred Medium	_____
Comments	_____

Name, Address, Phone Number, E-Mail, and Fax Number will be in the B.A.S. Roster.

This information will be omitted from the roster by request only.

Please remove the following from Roster: _____