



**March
2026**

The Palette

Committee Chairs

President

~ DIANA DAY GLYNN

Vice President

~ **Position Open**

Treasurer

~ BARBARA ALGER

Recording Secretary

~ BARBARA LAMBERT

Programs

~ ANNA MURPHY/

~ Diana Glynn

Membership

~ LISA GALAVIZ

Special Event Coordinator

~ GLORIA MUELLER

Exhibits & Palette Editor

~ DIANA DAY GLYNN

Website Editor

~ SOFIA MEDEIROS

Hospitality Coordinator

~ MARIA SANCHEZ

Monthly Awards

~ LEONA MORIARTY

~ MARIA SKY

Scholarships

~ MARY MEISSNER

Publicity

~ **Position Open**



Come join us for our next BAS meeting on
Saturday, March 14, 2026 (1:30 - 4:00)
Burlingame Community Center (Fine Arts Room)
850 Burlingame Ave., Burlingame.
Hope to see you there...

UP NEXT

Our guest demo artist for March is watercolorist Jaladhi Pujara. His expressive paintings have recently won top awards in the PleinAir Salon and have been selected for several international shows.

Instead of painting every little detail, Jaladhi focuses on capturing a mood and a feeling. He usually starts his work outside, simplifying the Northern California scenery around him. He loves finding the magic in everyday places, leaving just enough to the imagination so that viewers can step in and connect with the art in their own way.

Website: <https://jaladhipujara.com/>


Instagram: @jaladhi.paints



The Committee Meeting will be Thursday March 12, 2026 at 2:30 pm

President's Message

Dear Members,

Once again, I was happy to see such good attendance at last month's BAS meeting, it was even better than January. It's nice to see our new members bringing paintings to participate in the monthly competition, and winning their first BAS ribbons. Regarding montly competitions, I'm not a hundred percent sure, but I don't think many other art groups offer this kind of fun event monthly. I also wanted to mention that these friendly competitions are not about pressure or perfection, but more about participation, experimentation, and mostly celebrating each other's work. They are a wonderful way to challenge ourselves creatively, try something new or outside of our comfort zone and to share inspiration and techniques. Every entry adds something unique, as the variety of styles, mediums, and interpretations are inspiring. So, if you've been on the fence about participating, consider this a nudge and bring your work next month to join in on the fun.....the only real requirement is enthusiasm... 

Diana



BAS Volunteers

As a reminder to all... the Burlingame Art Society is solely managed by volunteers, which means we can always use more help with jobs that need to be done to keep us going. We hope that you will consider joining the wonderful group of volunteers that take on these tasks. For more information please feel free to speak with anyone on the BAS Leadership Committee.

MANY HANDS MAKE LIGHT WORK!

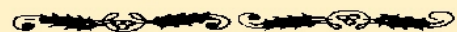
Membership Renewal Time

Your 2026 BAS membership renewal fees are now due.

The yearly fee for 2026

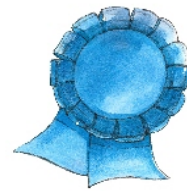
~ \$60.00 per person / \$90.00 per couple

Remember: In order to compete in the BAS monthly painting competitions, you must be a paid member for the year.



If you know anyone that you think might be interested in joining BAS, let them know they are welcome to come as a guest to one of our 2026 monthly demo meetings, beginning in January, to see if they would like to be part of our great art group.

February Ribbon Winners



1st Place



**"Laurie Charkins "Tyler's Dolphin"
(Oil)**

2nd Place &
shared Popular Choice



*Photos
by
Diana
Day
Glynn*



**Meena Joglekar
"Tuscan Lunch" (Oil)**

3rd Place



**Barbara Alger "Lorikeets"
(Pastel)**

Honorable Mention



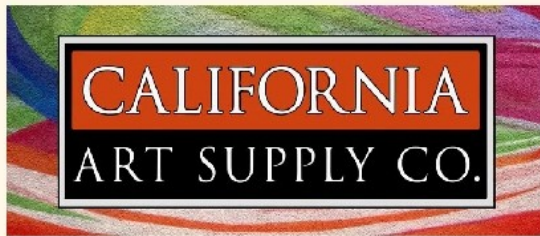
**Lisa Galaviz "Seascape"
(Watercolor)**

more February Ribbon Wins

~ shared Popular Choice



Mary Meissner "Eye Wonder"
(Oil)



Offers a 10% discount if you mention being a BAS member at the point of purchase.
Open Mon-Sat 9.30-7 pm, Sun 11:00-5 pm

burlingameartsociety.org



Burlingame Art Society
P.O.Box 1754
Burlingame. Ca 94010

MEETING RECAP

Our guest artist in February, Ria Krishnan, showed us her technique for oil painting in a modern impressionist style. Her loose, visible brushstrokes contributed to a sense of immediacy and movement. Rather than blending the paint smoothly, she allowed the strokes to remain distinct. Ria uses a fairly limited palette and seems to mix somewhat subdued hues, but with a variation in value and temperature, she is able to establish depth and dimension in her paintings. We enjoyed her wonderful demo along with her wonderful personality.

