

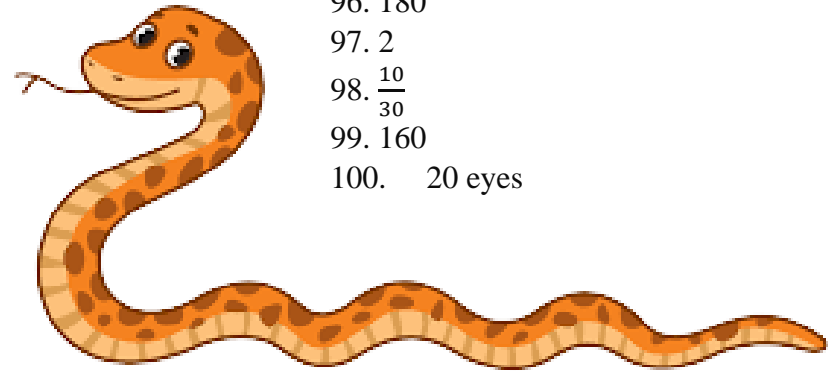
# Snakes and Ladders Timetables

- 10
- 10, 20, 30
- No
- 12
- October
- 100
- 40
- 10
- 5
- 15
- 2
- 110
- 15
- 6
- 30
- Even
- 70 days
- 5
- 0
- 12.3
- 14
- 40
- 40 toes
- 11
- 25
- 20
- 16
- 5
- 40
- 13

- 17
- 100
- 32
- 0
- 18
- 20
- 70
- 15
- 50
- Composite
- $\frac{24}{10}$
- 100
- 130
- No
- 25
- 7
- 120
- 1000 cm
- 90
- 20
- 8
- 80
- 3
- $3\frac{7}{10}$
- 190
- $\frac{30}{40}$
- 20 tenths
- 149
- 60

- 9
- 19
- 360
- 60
- 40
- 200
- 70
- 100 cm<sup>2</sup>
- 5
- 90 mm
- Yes
- 20
- 75
- 9
- 6
- $\frac{7}{10}$
- 20 halves
- 40 coins
- 170
- 40 cm
- 3
- 4
- 80
- 10
- 7
- 140
- 10 tails
- 1

- 60
- 5
- 150
- 18
- 240 hours
- 37
- 3
- 180
- 2
- $\frac{10}{30}$
- 160
- 20 eyes



## 10X TABLES

