



Dobson Marine Chandlery

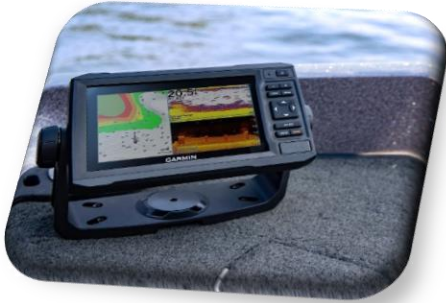
*Marine
Electronics*



TABLE OF CONTENTS

| | |
|--|----|
| Marine electronics | 3 |
| Chartplotters | 4 |
| fishfinders | 6 |
| Humminbird chartplotters and fishfinders | 8 |
| Intrumentation..... | 11 |
| gps..... | 13 |
| Communication..... | 14 |
| Cameras | 19 |
| Night vision | 21 |
| Stereos | 22 |

MARINE ELECTRONICS



View our extensive range of marine electronics. All prices shown are including VAT. Contact us via email if you wish to enquire about a product or if you are interested in a product that is not listed as this may also be available.

chandlery@dobsonmarineservices.com

CHARTPLOTTERS

Garmin EchoMAP Plus 45cv

This compact combo has lots of built-in benefits. Easy-to-install and even easier to use, it has a bright 4.3" display that is easy to read on a sunny day on the water. It features built-in support for Garmin CHIRP traditional sonar that delivers remarkable target separation and CHIRP ClearVü™ scanning sonar for nearly photographic images of what's below the boat.

Preloaded with BlueChart g2 charts for the U.K., Ireland and the Northwest mainland Europe coast. Plus, it has Quickdraw Contours mapping software to instantly create personalised fishing maps on-screen with 1 foot contours as you fish. You own these maps. They are yours to keep private or share with the Quickdraw Community on Garmin Connect™. Plus, you can share waypoints and routes with other ECHOMAP or STRIKER units. It also features a quick-release mount allowing you to quickly remove your device from power and mount.



Garmin EchoMAP UHD 65cv

Find more fish using the ECHOMAP™ UHD 65cv combo. It features a bright, sunlight-readable 6" screen plus support for Ultra High-Definition ClearVü scanning sonar and Garmin high wide CHIRP traditional sonar.

Raymarine Dragonfly 7 PRO & Navionics Silver EU Chart

catching fish and less time looking for them.

With wide spectrum CHIRP more sonar signals are transmitted into the water allowing Dragonfly to interpret more detail, target more fish, and image structure with unmatched clarity.





Garmin EchoMAP UHD 75cv

Find more fish using the ECHOMAP™ UHD 75 combo. It features a bright, sunlight-readable 7" touchscreen with keyed assist plus support for Ultra High-Definition ClearVü and SideVü scanning sonar or Garmin high wide CHIRP traditional sonar.

Raymarine AXIOM+ 7RV & RV-100 Transducer

The performance-tuned Axiom+ is a new generation of award-winning Raymarine multifunction displays. Optimised for speed with quad-core performance, 16gb of internal storage, new higher resolution IPS displays deliver 25 percent more brightness and new day/night color palettes offer enhanced visibility in any lighting condition.

AXIOM+ 7RV & RV-100 Transom Mount Transducer (Chartplotter with Real Vision 3D Sonar)



GARMIN GPSMAP 723XSV - CHARTPLOTTER, SONAR & GMR HD+ RADOME



Get a sharper view from your connected helm with the GPSMAP 723 chartplotter. Its higher-resolution 7" display has 60% more pixels than previous-generation touchscreens. And with its compact footprint, vivid sonar colour palette and nearly double the processing power of previous-generation GPSMAP devices, it seamlessly integrates into your Garmin marine system. The GPSMAP 723xsv also features built-in Ultra High-Definition SideVü and ClearVü scanning sonars and supports 1 kW CHIRP traditional sonar as well as fully networkable radar, Panoptix LiveScope sonar and Auto Guidance technology.

FISHFINDERS

Garmin Striker Vivid 5cv Fishfinder & GT20-TM Transducer

See fish and structure in maximum detail when you pick your display color, your location and your sonar for your day on the water with the STRIKER Vivid 5cv fishfinder with included GT20 transducer.



Garmin Striker Vivid 7sv Fishfinder & GT52HW-TM Transducer

See fish and structure in maximum detail when you pick your display color, your location and your sonar for your day on the water with the STRIKER Vivid 7sv fishfinder with a GT52 transducer.

Garmin Striker Vivid 7sv Fishfinder & GT20-TM Transducer

See fish and structure in maximum detail when you pick your display color, your location and your sonar for your day on the water with the STRIKER Vivid 7cv fishfinder with a Gt20 transducer.



Garmin Striker Vivid 9sv Fishfinder & GT52HW-TM Transducer

See fish and structure in maximum detail when you pick your display color, your location and your sonar for your day on the water with the STRIKER Vivid 9sv fishfinder with a GT52 transducer.



Garmin Striker 4 Fishfinder & Dual-Beam Transducer

The rugged STRIKER series is designed to not only see fish and structure below the boat, but also to mark your favourite fishing spots and easily navigate back to them. With GPS on board, you also have access to accurate speed over the ground (SOG) data. Raising the standard for fishfinder performance and ease-of-use, the STRIKER series is a powerful tool to help inland and nearshore anglers find and catch more fish.

Garmin Striker Vivid 4 Fishfinder

See fish and structure in maximum detail when you pick your display color, your location and your sonar for your day on the water with the STRIKER Vivid 4cv fishfinder with included GT20 transducer.



Furuno 8.4" Colour display Fishfinder 600w/1Kw



Dual-frequency fish finder equipped with revolutionary new RezBoost™ signal processing technology.

ACCU-FISH™ - A unique fish size analyzer based on the latest digital technology.

Bottom Discrimination - Analyze bottom structure.

White Line feature - Discriminate fish lying near the bottom.

Configurable Alarm function (depth, fish echoes, etc.).

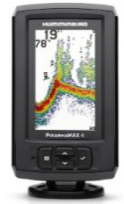
Share and display information on a chart plotter.

Fast transmission rate of 3,000 PRR (Pulse Repetition Rate) per minute (at 5 m depth range).

HUMMINBIRD CHARTPLOTTERS AND FISHFINDERS

PiranhaMAX 4

With modern styling and a larger 4.3" color LCD, the PiranhaMAX™ 4 will give you a fresh perspective on what's below your boat. Thanks to a redesigned, even easier-to-use interface, Fish ID+™, fish alarms, depth alarms and zoom has never been simpler. Feature for feature, it packs a technological chomp that no fish finder in its class can match.



PiranhaMAX 4 DI

Sharper image. Sharper teeth. With modern styling and a larger 4.3" color LCD, the PiranhaMAX™ 4 DI will give you a fresh perspective on what's below your boat. Thanks to a redesigned, even easier-to-use interface, the power of Down Imaging®[®], Fish ID+™, fish alarms, depth alarms and zoom has never been simpler. Feature for feature, it packs a technological chomp that no fishfinder in its class can match.

HELIX 5 SONAR G2

If fishing is in your DNA, there's no such thing as "too early" or "too far." High expectations go with the territory. The HELIX®5 Series answers the call with an uncompromising, 5" widescreen display. This HELIX 5 SONAR G2 PT model features DualBeam PLUS and SwitchFire.



HELIX 5 DI G2

If fishing is in your DNA, there's no such thing as "too early" or "too far." High expectations go with the territory. The HELIX®5 Series answers the call with an uncompromising, 5" widescreen display. This HELIX 5 DI G2 model features Down Imaging, DualBeam PLUS and SwitchFire.



HELIX 5 GPS G2

Navionics Compatible: Humminbird provides even more map options thanks to additional Navionics compatibility. Available maps regions include detailed cartography for saltwater and freshwater applications which make Navionics a great option for fishing, cruising or sailing.

NMEA0183 port to connect to DSC VHF (separate cable required)

10Hz ultra fast GPS update for precision positioning

Mark button for fast waypoint marking

Waterproof to IPX7

HELIX 5 CHIRP GPS G3

If fishing is in your DNA, there's no such thing as "too early" or "too far." The HELIX® 5 Series answers the call with an uncompromising 5" widescreen, colour display. This HELIX 5 CHIRP GPS G3 model features Dual Spectrum CHIRP 2D sonar, internal GPS with Humminbird Basemap and AutoChart Live built-in, with additional compatibility for Humminbird and Navionics premium fishing charts.



HELIX 7 CHIRP SI GPS G4

The HELIX 7 CHIRP SI GPS G4 fishfinder features CHIRP Side Imaging, CHIRP Down Imaging, Dual Spectrum CHIRP Sonar, AutoChart Live, Internal GPS and Humminbird Basemap built-in. An upgraded high-definition 7" display will give you the best view of the many pre-loaded split screen view options so that you'll never miss a fish.



HELIX 7 CHIRP MSI GPS G3

The HELIX 7 CHIRP MEGA SI GPS G3 fishfinder features MEGA Side Imaging, MEGA Down Imaging, Dual Spectrum CHIRP Sonar, AutoChart Live, GPS and Humminbird Basemap built-in. The 7", the ultra-wide display gives you ample room to view the many pre-loaded split screen view options





HELIX 8 CHIRP MEGA SI+ GPS G4N

The HELIX 8 CHIRP MSI+ GPS G4N features an 8" display, MEGA Side Imaging+, MEGA Down Imaging+, Dual Spectrum CHIRP Sonar and internal GPS with Humminbird Basemap. As with all HELIX G4N models, this HELIX 8 includes standard features such as AutoChart Live, Wi-Fi and NMEA 2000®, in addition to Bluetooth® and Ethernet networking for compatibility with the One-Boat Network™ family of products from Humminbird, Minn Kota and Cannon.

HELIX 9 CHIRP MEGA SI+ GPS G4N

The HELIX 9 CHIRP MSI+ GPS G4N features a 9" display, MEGA Side Imaging+, MEGA Down Imaging+, Dual Spectrum CHIRP Sonar and internal GPS with Humminbird Basemap. As with all HELIX G4N models, this HELIX 9 includes standard features such as AutoChart Live, Wi-Fi and NMEA 2000®, in addition to Bluetooth® and Ethernet networking for compatibility with the One-Boat Network™ family of products from Humminbird, Minn Kota and Cannon.



HELIX 10 CHIRP MEGA SI+ GPS G4N

The HELIX 10 CHIRP MSI+ GPS G4N features a 10.1" display, MEGA Side Imaging+, MEGA Down Imaging+, Dual Spectrum CHIRP Sonar and internal GPS with Humminbird Basemap. As with all HELIX G4N models, this HELIX 10 includes standard features such as AutoChart Live, Wi-Fi and NMEA 2000®, in addition to Bluetooth® and Ethernet networking for compatibility with the One-Boat Network™ family of products from Humminbird, Minn Kota and Cannon.

APEX 19 MEGA SI+ CHARTPLOTTER

The APEX 19 MEGA SI+ CHARTPLOTTER provides the clearest sonar imaging on the sharpest multi-function display that anglers have ever seen. Industry-leading MEGA Imaging+ and Dual Spectrum CHIRP sonar come standard, with even more performance from a dedicated sonar channel for accessory 2D CHIRP transducers up to 2kW. See it all clearly with an 18.5" Full-HD touchscreen that provides a customized display of information from advanced network options like NMEA 2000®, HDMI In/Out, WiFi and Bluetooth®. Add the power of the One-Boat Network™ to integrate the accuracy of Humminbird GPS charts, unrivaled boat control from Minn Kota®, and reach new depths with wireless Cannon® downrigger control. The APEX Series is a new kind of MFD that will take you fishing to a new level.



INSTRUMENTATION

Raymarine i70s Multifunction Colour Display

The i70s multifunction gives you the flexibility to display instrument and navigation data that is most important to you. Equipped with a bold and bright 4.1" display the i70s is easy-to-customise with digital, analogue and graphical displays of depth, speed, wind and more. Add the i70s to your existing Raymarine instrument system or create a network of i70s displays and sensors, the choice is yours.



Raymarine i50 i60 Wind Speed Depth 3 Instrument 3 Transducer Pack



Raymarine i50 Speed, i50 Depth and i60 Wind Displays with P120 Speed/Temperature Transducer, P319 Depth Transducers and Short Arm Wind Vane

NASA MeteoMan Barometer with Masthead unit

Atmospheric pressure range.

Wind direction.

Port 180 degrees to Starboard 180 degrees (in nautical mode).

Displayed in analogue and digital format.

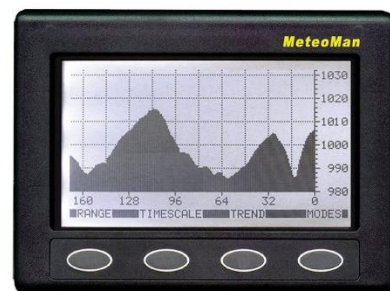
Resolution 1 degree.

Range 1 950 to 1050mb.

Real time clock 12- or 24-hour format.

Race countdown timer 10 and 5 minutes.

Wind speed history Range 1 0 to 100 knots.





NASA Clipper Speed Log Repeater

The Clipper Log Repeater repeats all data from the master unit.

In The Box

Display; 10 metre cable; 'O' ring; Weather cover.

NASA Clipper Depth Sounder

Bestselling Depth sounder with giant 40mm high digits for easy viewing. The outstanding Clipper range of instruments incorporate technically advanced electronics in an industry standard 110mm square case.

In The Box

Display Unit, In hull depth transducer with cable, Weather Cover.



Garmin GMI 20 Marine Instrument

The GMI 20 digital marine instrument display is perfectly designed for both power and sail vessels. Designed to clearly show depth, speed, wind and 100+ marine and vessel parameters, its large, bright 4" colour display with extra-large digits is easy to read at a distance and has a 170-degree viewing angle.



GPS

Garmin GPSMAP 86s

Cast off confidently with the GPSMAP® 86s. This premium, floating handheld has a sunlight-readable 3" colour display. Wireless connectivity with compatible chart plotters and instruments makes it a virtual extension of your onboard marine system.



Garmin GPSMAP 86i

Cast off confidently with GPSMAP® 86i. This premium, floating handheld has a sunlight-readable 3" colour display and includes built-in inReach satellite technology (subscription required). Wireless connectivity with compatible chartplotters and instruments makes it a virtual extension of your onboard marine system.

Garmin Montana 610

Designed for use on the trail, on road or on the water, the Montana 610 from Garmin will guide you wherever you go. With a vast 4" sunlight-readable touchscreen that offers crystal clear enhanced colours, dual orientation display and GPS and GLONASS positioning to track your location quicker and more accurately, even in the most challenging environment. It's easy to see where you are at all times and conveniently control your track recording with the new Track Manager. Montana 610 includes a 3-axis electronic compass with barometric altimeter and comes with a free 1-year BirdsEye Satellite Imagery subscription. Both durable and waterproof (IPX7), Montana 610 is built to withstand the elements. Bumps, dust, dirt, humidity and water are no match for this rugged navigator.



COMMUNICATION

Raymarine Ray63 VHF Radio with Internal GPS receiver

Raymarine's Ray63 radio comes with oversized controls and a big screen for easy operation offshore. Ray63 is a full-function VHF marine radio with Class D Digital Selective Calling (DSC) and a built-in GPS receiver. The Ray63 also supports 1 wired or 2 wireless RayMic controllers for true multi-station control and intercom capability.



Icom IC-M510 Marine VHF DSC Radio with Smartphone Control



The IC-M510 is a stylish, advanced VHF/DSC marine radio from Icom that gives smartphone control of the radio using the RS-M500 app (iOS™/Android™). Up to three smartphones can act as remote controllers via the radio's WLAN. It is even possible to have an intercom function between the smartphones and the radio itself.

Garmin VHF 115i Marine Radio

Communication is critical on the water. Stay in contact with the shore and other boats in the area With the VHF 115 radio. No matter where the boat is or heading the vessel can maintain communication.



Garmin VHF 215i Marine Radio

Communication is critical on the water. This easy-to-install fixed-mount VHF 215i radio enhances communication to help stay in contact with the shore and other boats in the area.



ICOM M506GE VHF/DSC with HS98 Handset

VHF/DSC marine transceiver with NMEA 2000 connectivity and AIS receiver.

The IC-M506GE is packed full of features including integrated AIS receiver and GPS receiver built-in, NMEA2000 connectivity, 'Last Call' voice recording function, 'Active Noise Cancelling' technology plus Icom's new intuitive menu-driven user interface and large dot matrix display making it really easy to use.

Integrated AIS Receiver

With an integrated AIS receiver, the IC-M506GE can show real-time AIS vessel traffic information on the display. The AIS target call function allows you to easily set up a DSC individual call. The Plotter, Target list and Danger list can be toggled on the display.



Furuno FM-4800 Class D VHF Radio Telephone

The Ultimate 5-in-1 Tool, VHF Radio, GPS, AIS, Loud Hailer with NMEA2000 and DSC Calling.



Cobra HH350 Floating Handheld VHF Marine

Floating - Never lose your radio. Floating design and orange core makes retrieving radio easy if dropped overboard.

6 Watt VHF - Select between 1, 3 and 6 Watts for short- and long-range communication.

Noise-cancelling microphone - Blocks background noise for clearer conversations.

BURP - Vibrates water out of the speaker grill and improves speaker performance.



ICOM VHF/Class D M605



The IC-M605EURO is an advanced Class D VHF/DSC radio with integrated AIS receiver, capable of showing real-time AIS vessel traffic information on the large colour TFT LCD display. This radio contains many advanced features including Active Noise Cancelling technology, a sophisticated receiver and a last call voice recording function that saves up to two minutes of an incoming call. The IC-M605EURO also has the capability of connecting up to three command stations on a vessel, allowing operation/intercom via either RCM600 Remote Stations or HM-229 Commandmics. This makes it a great communication system for large yachts or motor cruisers.

Up to Three COMMAND HEAD/COMMANDMIC™ - The IC-M605EURO can be configured into a multi-station on-board VHF Radio system. The radio can be remotely controlled with up to three controllers, RC-M600 COMMAND HEAD and/or HM-229B/W COMMANDMIC™, with an intercom function available among the main radio and controllers. This will provide maximum operating flexibility anywhere on your boat.

Cobra HH150 floating waterproof Handheld VHF Marine Radio

Fully featured floating VHF handheld radio

Perfect for recreational boaters or as a portable backup on larger vessels. Anyone who lives, works, or plays on the water needs one.



ICOM F5022 Mobile VHF

The IC-F5022M mobile marine VHF is perfect for any organisation that wishes to communicate with vessels from the shore. Its applications are varied and can be used for marshalling races and coordinating marina and harbour traffic to name but a few. Organisations such as National Coast Watch will also find this a useful backup for any offshore emergencies.



ICOM GMDSS Survival Craft VHF Handheld Radio Lithium-Ion Pack

GMDSS Survival Craft 2-Way VHF Radio.

The IC-GM1600E Marine VHF handheld has been designed for GMDSS compliant survival craft communications. The radio is engineered to survive and function in the extreme environmental conditions common in marine emergencies and brings the latest Search and Rescue technology to the marketplace.

Meets strict environmental requirements for GMDSS survival craft radio. The IC-GM1600E meets 'Wheel mark', MED certification - Since 1999, SOLAS (Safety Of Life At Sea) has set the international standards for life rafts and their emergency equipment. Icom's IC-GM1600E is the latest and most advanced handheld to meet these rigid standards including built-in GMDSS technology. The IC-GM1600E meets temperature, thermal shock, vibration and drop resistant (from 1 m height) requirements.

ICOM M605 VHF with CB2000 AIS & NMEA 2000 Starter Kit

This is a bundle pack consisting of the Icom M605 VHF with the new CB2000 Class B AIS Transponder add on. The pack includes a NMEA 2000 starter kit for connection to the IC-M506/M605 or compatible devices.

Introducing the advanced CB2000 AIS transponder unit which transforms the ICOM IC-M506EURO and IC-M605EURO to VHF/DSC radios complete with Class B AIS transponders. The CB2000 also provides a simple solution for those customers who already own an IC-M506EURO or IC-M605EURO but wish to upgrade their radios with the purchase of this Class B AIS transponder



Cobra HH500 Floating Handheld VHF Marine

Rewind-Say-Again™

Replay missed VHF calls

Floating

Never lose your radio. Floating design and orange core makes retrieving radio easy if dropped overboard

6 Watt VHF

Select between 1-, 3- and 6-Watt s for short- and long-range communication

Noise-cancelling microphone

Blocks background noise **for clearer conversations**



Cobra F77 Fixed VHF Marine Radio with GPS - Grey

The MRF77 is a unique VHF radio with an integrated GPS receiver and exact location for a true life-saving device. Instant emergency channel 16/9, Rewind-Say-Again® feature, and access to all NOAA weather channels make this a complete solution.

With your Cobra MRF77 GPS, you'll receive a transceiver, flush mount kit, surface mount kit, microphone, microphone mount, and GPS interface cable.

Cobra MRF77 GPS

Transceiver

Flush mount kit

Surface mount kit

Microphone

Microphone mount

GPS interface cable

Cobra Adventure 12km Floating 2-Way Radio 2-Pack

The All new 12-Kilometre Walkie Talkie from Cobra. Complete with rubberized grips to provide enhanced grip and built-in LED Flashlight to keep you on the go. VibrAlert® notifies you of incoming transmissions by vibrating. This Floating waterproof radio allows you to be ready, whatever the weather. Voice-activated transmission keeps your hands for other tasks. Up to 968 channel combinations are available when the 8 channels are combined with the 121 privacy codes.



CAMERAS

Garmin GC 200 Marine IP Camera

The GC 200 marine IP camera provides added security and awareness on a vessel. Use multiple cameras to monitor areas above and below deck in clear, real-time HD video. Stream video from up to four cameras at a time on a single chartplotter.



Garmin GC 100 Wireless Camera

For added security and practical awareness above and below deck and around the boat, the GC 100 marine camera provides an easy solution. This compact camera wirelessly streams high-quality video to display directly on any compatible chartplotter on the same network.



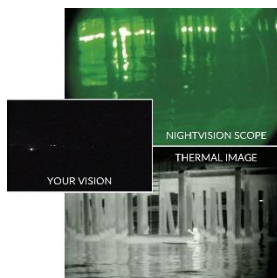
Garmin GC14 Marine Camera

The GC14 is a small and discreet analogue camera that produces excellent quality images, viewable via a single or multiple networked onboard TVs, video monitors or compatible chartplotters - above and/or below decks.



Raymarine FLIR Ocean Scout 240 Thermal Camera

The Ocean Scout 240 is a rugged, handheld thermal camera that lets you see other vessels, landmarks, buoys, and floating debris in total darkness. The Ocean Scout 240 gives you the ability to see clearly, steer confidently, and respond quickly in an emergency.



Raymarine CAM210 Bullet CCTV Day and Night Video Camera (IP Connected)

Plug and play integration with Raymarine MFD's running Lighthouse II.

Power over Ethernet (PoE) or direct 12v DC power supply.

High bright IR LEDs for operation in total darkness.

Digital Defog processing improves the captured image in poor weather conditions (such as smog, fog or smoke).

Intelligent IR technology for clear video images at night in all conditions.



Raymarine CAM50 CCTV Camera (PAL format)

The Raymarine CAM50 marine CCTV camera is perfect for interior installations. Its unobtrusive dome design is ideal for mounting in the saloon, wheel house or engine room.

Raymarine M300C Stabilised Pan & Tilt Visible IP Camera

Combining a high-performance visible marine camera with long-range optical zoom capability, the M300C offers positive target identification for law enforcement, commercial, and recreational applications. Advanced gyro-stabilization provides steady imaging in rough sea conditions and allows the M300C to monitor targets or hazards over long distances continuously. Exceptional low light performance from the M300C gives captains enhanced awareness once the sun dips below the horizon



NIGHT VISION

Bushnell Equinox X650 Digital Night Vision Monocular

Bushnell's Equinox X650 Digital Night Vision offers superb optical clarity, illumination, and a generous 650-foot viewing range in the dark. Bar-setting features include a built-in infrared illuminator, a tripod-mounting adaptor, micro-SD card recording, a 5X zoom that really brings out the details, and full-color daylight viewing for 24/7 use.



Bushnell Equinox Z Night Vision Monocular 6x50mm

Night's ultimate equalizers have arrived, with the New digital 6x50mm Equinox Z Night Vision Monocular from Bushnell.

Image & Video Capture

Powerful Infrared Illumination

Outstanding optical clarity

Night or Day viewing

Rugged water-resistant housing

Video out capable

Tripod mountable

Micro SD card slot (up to 32GB)

4 AA batteries

Bushnell Equinox Z2 Night Vision Monocular 6x50mm

The new Bushnell Equinox Z2 Night vision Monocular is an affordable, easy to use and versatile night vision unit, making you capable of viewing wildlife after-dark at an exception distance. Offering big improvements over the previous Equinox Z version, it uses an Infrared (IR)-sensitive CMOS sensor and a micro-LCD screen instead of a conventional, expensive intensifier tube, for its night vision capabilities.



STEREOS

Fusion MS-SRX400 Apollo Marine Zone Stereo with WiFi



The Apollo SRX400 combines the latest design, engineering and powerful feature set of the Apollo Series in a compact, versatile form factor. With built-in Wi-Fi streaming, Fusion's Digital Signal Processing, PartyBus connectivity and over-the-air software updates, the Apollo SRX400 is the perfect combination of intelligent design and superior sound in a compact zone stereo.

Fusion MS-RA55 Compact Marine Stereo with Bluetooth

The most compact FUSION stereo system yet, the MS-RA55 delivers clear and dynamic sound reproduction in a marinized, space-saving chassis. With Bluetooth audio streaming, users can stream music from any compatible device to the MS-RA55, allowing boaters to enjoy their favourite streaming service apps.



Hertz HMR 20 - IP66 Marine Stereo with Bluetooth

The HMR 20 is an IP66 rated AM / FM Marine stereo that can be expanded with the optional DAB+ Module. The powerful (RDS)/AM PLL radio features extended connectivity powered by Bluetooth audio streaming and USB 2.0.



Fusion MS-RA60 Marine Stereo with Wireless Connectivity

The MS-RA60 is Fusion's most economical marine stereo yet, featuring modern aesthetics, multi-Zone™ technology in two zones and advanced connectivity options in a compact form factor. Designed for quality audio entertainment in the harsh marine environment, a perimeter bonded, anti-fogging LCD is integrated into the IPX6 and IPX7 water resistant black front face – making the MS-RA60 an attractive addition to your helm.



Hertz HMR 20D DAB+ Marine Stereo, 5 Ch AMP, RGB Speakers & 500W Sub



Hertz Marine Stereo value pack comprising:

- Hertz HMR 20D IP66 Marine Stereo with AM / FM / DAB+ & Bluetooth.
- Hertz HCP 5MD 4 x 50 Watt RMS + 1 x 150-Watt RMS 5 Channel IP64 Marine amplifier.
- Hertz HEX 6.5 LD White 150W 6.5" IP65 marine coaxial speakers with RGB LED lighting option.
- Hertz HMS 10 B-2 500 Watt White 10" IP65 marine subwoofer.

Hertz HMR 20 AM / FM Marine Stereo & 100W HEX 6.5" White Speakers

Hertz Marine Stereo value pack comprising:

- Hertz HMR 20 IP66 Marine Stereo with AM / FM & Bluetooth.
- Hertz HEX 6.5 M-W White 6.5" IP65 marine coaxial speakers



Fusion MS-RA70N Marine Stereo & EL-F651W 6.5" Marine Speakers



The MS-RA70N is the perfect entry-level marine stereo packed with FUSION's innovative entertainment technologies that create quality on-water entertainment experiences. Engineered to seamlessly replace any standard DIN sized non-marinated stereo with the FUSION marine option. The low-profile design allows for easy integration and features innovative dash and flush mounting options. The ability to install the RA70N with a dash finish or integrated into a glass helm with a flush surface finish allows for conventional mounting or a more streamlined dash and high-end installation.

The FUSION-Link enabled MS-RA70N provides users with direct stereo control from a compatible Multi-Function Display (MFD) or FUSION wired remote control when utilizing an existing NMEA 2000 network. Visit www.fusion-link.com for compatible MFD's.