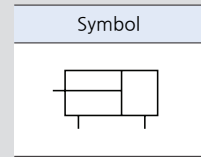
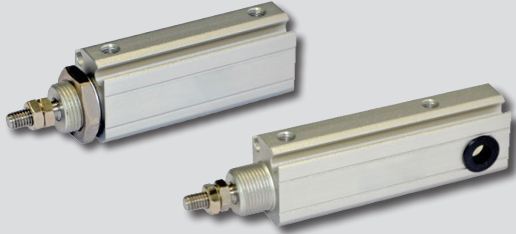


AJP2 series



Features

- Compact & lightweight makes it easier to install and dismantle
- Piston rod is highly precise and do not require refueling
- Auto switch can be attached
- The cylinder body has a switch slot, so it's easy to attach

How to order

AJP2 - LB 16 - 10 - Y -

① ② ③ ④ ⑤ ⑥ ⑦ ⑧

① Series

AJP2	Plate cylinder(Double acting)
ADJP2	Plate cylinder(Double acting, Built-in magent type)

② Type

Nil	Plate type(Standard)
H	Hinge mounting type

③ Mounting style

Nil	None
LB	Foot type(Only plate type)
FA	Rod side flange type(Only plate type)
DB	DB type(Only hinge mounting type)

④ Bore size

6	6mm	12	12mm
8	8mm	16	16mm
10	10mm		

⑤ Cylinder stroke

Bore size	Standard stroke	Max. stroke
6	5, 10, 15, 20, 25	25
8	5, 10, 15, 20, 25, 30, 35, 40	40
10		
12		
16		

⑥ Rod end thread

Nil	With thread
B	Without thread

⑦ Rod end attachment

Nil	None
I	Single knuckle joint
Y	Double knuckle joint
FC	Rubber bumper(Flat type)
RC	Rubber bumper(Round type)

⑧ Auto switch

Nil		None	
Reed A/S	Model	Solid state A/S	Model
A-90(V)	D-A90(V)K	F-9N(V)	D-F9N(V)K
A-93(V)	D-A93(V)K	F-9P(V)	D-F9P(V)K
A-93N	D-A93KN	F-9B(V)	D-F9B(V)K
A-93S	D-A93(V)K-S	F-9N(V)S	D-F9N(V)K-S
		F-9P(V)S	D-F9P(V)K-S
		F-9B(V)S	D-F9B(V)K-S

※ Only for auto switch attached type.

※ Refer to page[10]-11, 21 for more information.

Specifications

Bore size	Ø6	Ø8	Ø10	Ø12	Ø16
Acting type	Double acting type				
Fluid	Air				
Operating pressure	0.15 ~ 0.7MPa				
Proof pressure	1.2MPa				
Temperature	-20℃ ~ 70℃				
Operating piston speed	30 ~ 500mm/s				
Stroke tolerance	+1.0 0				
Cushion type	Bumper				
Port size	M3 x 0.5			M5 x 0.8	

Compendium of AJP2

Five types cylinder size
Bore size : 6, 8, 10, 12, 16

Multi type cylinder

Convenient automatic switch attachment
The cylinder body has a slot for auto switch, so it is easy to attach.

AJP2: Standard plate cylinder (Double acting type)

AJP2H: Hinge mounting type cylinder (Double acting type)

Two kinds of rod type

Male thread

No thread

Three kinds of mounting type

LB type

FA type

DB type

Four kinds of cylinder joints

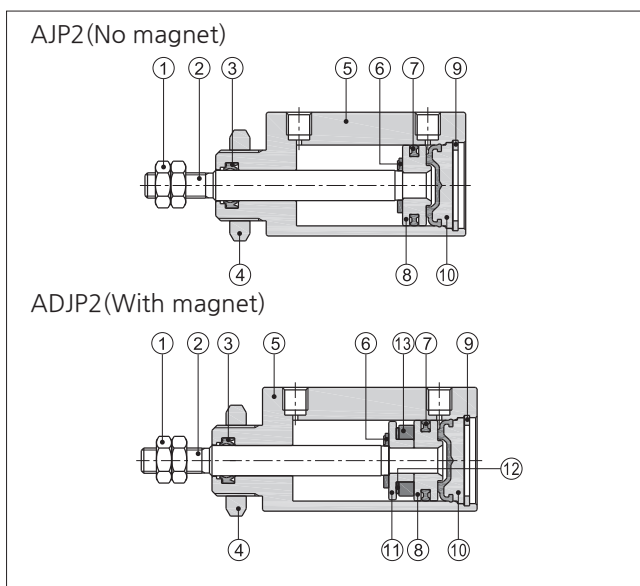
Single knuckle (I)

Double knuckle (Y)

FC Rubber bumper (Flat type)

RC Rubber bumper (Round type)

Inner structure and material of major parts



No.	Parts	Material
1	Rod cover	Stainless steel
2	Piston rod	Stainless steel
3	Front cover packing	NBR
4	Front cover nut	Carbon steel
5	Body	Aluminum alloy
6	Bumper	TPU
7	Piston rod	Aluminum alloy(Ø16), Brass(Others)
8	Piston seal	NBR
9	Clip	Spring steel
10	Back cover	Aluminum alloy & Rubber
11	Magnet holder	Stainless steel(Ø6), Brass(Ø8~Ø12), Aluminum alloy(Ø16)
12	Magnet washer	NBR
13	Magnet	Sintered Steel(Neodymium-Iron-Boron magnet)

Mass

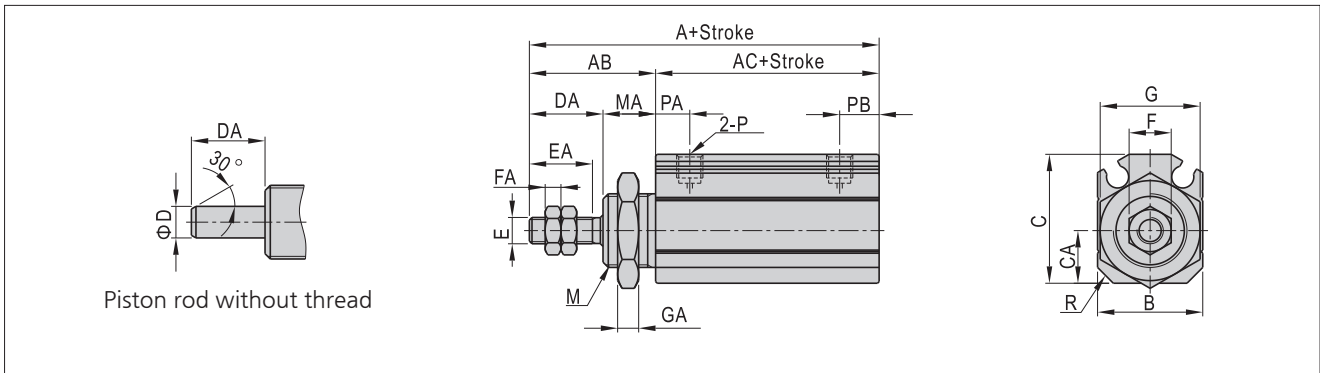
Unit:N

Bore size	Rod size	Acting type	Operating pressure(MPa)							
			0.1	0.2	0.3	0.4	0.5	0.6	0.7	
Ø6	3	Double acting	Extension	2.8	5.7	8.5	11.3	14.2	17.0	19.8
			Retraction	2.1	4.2	6.4	8.5	10.6	12.7	14.8
Ø8	4	Double acting	Extension	5.0	10.1	15.1	20.1	25.2	30.2	35.2
			Retraction	3.8	7.5	11.3	15.1	18.9	22.6	26.4
Ø10	4	Double acting	Extension	7.9	15.7	23.6	31.4	39.3	47.1	55.0
			Retraction	6.6	13.2	19.8	26.4	33.0	39.5	46.1
Ø12	6	Double acting	Extension	11.3	22.6	33.9	45.2	56.5	67.8	79.1
			Retraction	8.5	17.0	25.4	33.9	42.4	50.8	59.3
Ø16	6	Double acting	Extension	20.1	40.2	60.3	80.4	100.5	120.6	140.7
			Retraction	17.3	34.5	51.8	69.1	86.4	103.6	120.9

Stroke table

Bore size	Standard stroke(mm)	Max. stroke
Ø6	5, 10, 15, 20, 25	25
Ø8	5, 10, 15, 20, 25, 30, 35, 40	40
Ø10	5, 10, 15, 20, 25, 30, 35, 40	40
Ø12	5, 10, 15, 20, 25, 30, 35, 40	40
Ø16	5, 10, 15, 20, 25, 30, 35, 40	40

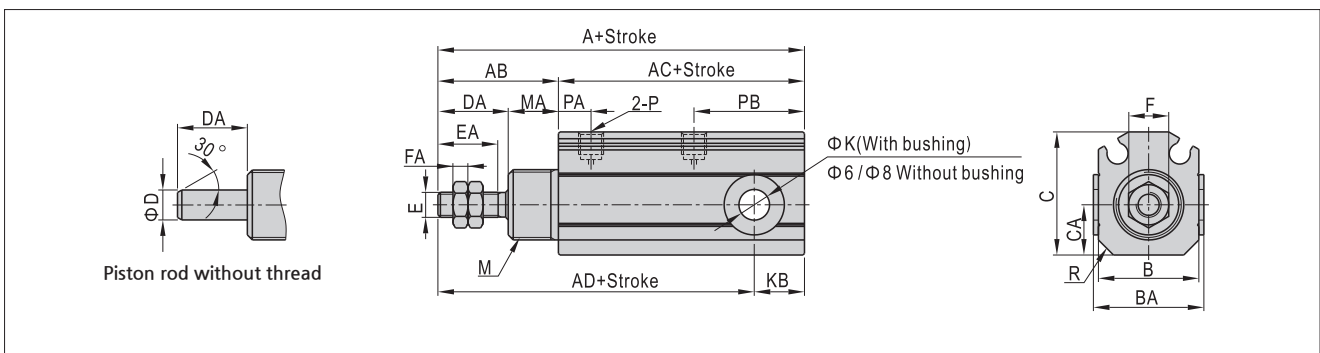
Dimensions(Plate type-AJP2, ADJP2)



Unit:mm

Bore size	A		AC		AB	B	C	CA	D	DA	E	EA	F	FA	G	GA	M	MA	P	PA	PB	R
	No magnet	With magnet	No magnet	With magnet																		
Ø6	33	16	38	21	17	14	16.5	6	3	9	M3x0.5	7	5.5	2.4	13	4	M10x1.0	8	M3x0.5	5.5	6.5	2
Ø8	38	18	43	23	20	14.5	17.5	7	4	12	M4x0.7	10	7	3	17	4	M12x1.0	8	M3x0.5	6	7	2
Ø10	39.5	19.5	44.5	24.5	20	15	19	7	4	12	M4x0.7	10	7	3	17	4	M12x1.0	8	M3x0.5	6	7	2.5
Ø12	43.5	19.5	48.5	24.5	24	17	21.5	8.5	6	14	M5x0.8	12	8	3	19	4	M14x1.0	10	M5x0.8	6.5	7.5	2.5
Ø16	43.5	19.5	48.5	24.5	24	20	24.5	10	6	14	M5x0.8	12	8	3	19	4	M14x1.0	10	M5x0.8	6.5	7.5	3

Dimensions(Hinge mounting type-AJP2H, ADJP2H)

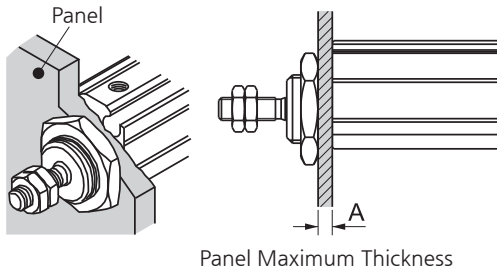


Unit:mm

Bore size	A			AC			AB	B	BA	C	CA	D	DA	E	EA	F	FA	K	KB	M	MA	P	PA	PB	R
	No magnet	With magnet	AD	No magnet	With magnet	AD																			
Ø6	38	21	34	43	26	39	17	14	-	16.5	6	3	9	M3x0.5	7	5.5	2.4	3 ^{+0.05} ₀	4	M10x1.0	8	M3x0.5	5.5	11.5	2
Ø8	46	26	41	51	31	46	20	14.5	-	17.5	7	4	12	M4x0.7	10	7	3	4 ^{+0.05} ₀	5	M12x1.0	8	M3x0.5	6	15	2
Ø10	50.5	30.5	44	55.5	35.5	49	20	15	17	19	7	4	12	M4x0.7	10	7	3	5 ^{+0.065} ₀	6.5	M12x1.0	8	M3x0.5	6	18	2.5
Ø12	58	34	48	63	39	53	24	17	19	21.5	8.5	6	14	M5x0.8	12	8	3	6 ^{+0.065} ₀	10	M14x1.0	10	M5x0.8	6.5	22	2.5
Ø16	58	34	48	63	39	53	24	20	22	24.5	10	6	14	M5x0.8	12	8	3	6 ^{+0.065} ₀	10	M14x1.0	10	M5x0.8	6.5	22	3

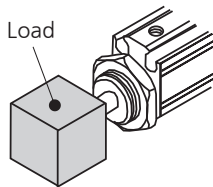
Installation and caution

1. When attaching accessory please work below the maximum tightening torque as shown in the table below.



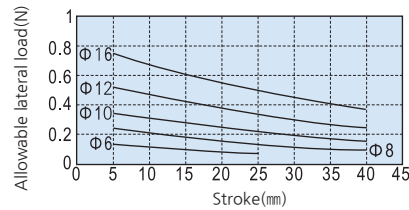
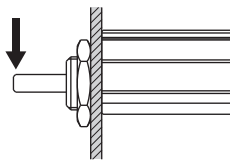
Bore size	Front cover thread	Max. allowable torque(N.m)	Max. width A(mm)
Ø6	M10x1.0	12.5	4
Ø8	M12x1.0	21.0	4
Ø10	M12x1.0	21.0	4
Ø12	M14x1.0	34.0	5
Ø16	M14x1.0	34.0	5

2. When attaching loads and accessory to the rod end, work below the maximum tightening torque in the table below.



Bore size	Piston rod thread	Max. allowable torque(N.m)
Ø6	M3x0.5	0.3
Ø8	M4x0.7	0.8
Ø10	M4x0.7	0.8
Ø12	M5x0.8	1.6
Ø16	M5x0.8	1.6

3. Allowable lateral load



Mounting style and Rod end attachment

Bore size	item	Mounting style			Rod end attachment			
		LB	FA	SDB	FC	RC	I	Y
Ø6	F-AJP2-6LB	F-AJP2-6FA	F-AJP2-6SDB	F-AJP2-6FC	F-AJP2-6RC	F-AJP2-6I	F-AJP2-6Y	
Ø8	F-AJP2-10LB	F-AJP2-10FA	F-AJP2-8SDB	F-AJP2-10FC	F-AJP2-10RC	F-AJP2-10I	F-AJP2-10Y	
Ø10			F-AJP2-10SDB					
Ø12	F-AJP2-16LB	F-AJP2-16FA	F-AJP2-12SDB	F-AJP2-16FC	F-AJP2-16RC	F-AJP2-16I	F-AJP2-16Y	
Ø16			F-AJP2-16SDB					

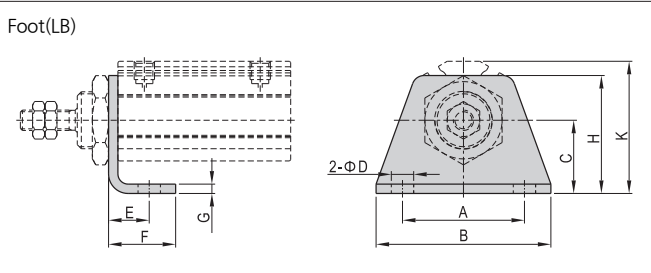
Accessory

Model	Item	Mounting style			Rod end attachment			
		LB	FA	SDB	I	Y	FC	RC
AJP2	No magnet	●	●	X	●	●	●	●
	With magnet	●	●	X	●	●	●	●
AJP2H	No magnet	X	X	●	●	●	●	●
	With magnet	X	X	●	●	●	●	●

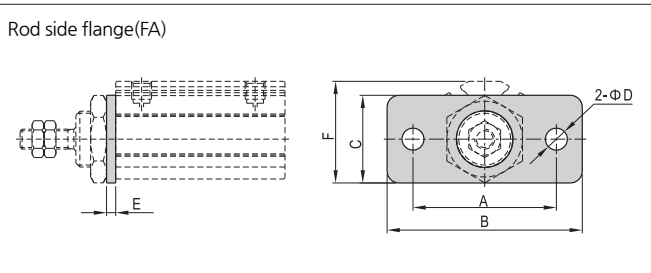
Accessory Material

Model	Item	Mounting style			Rod end attachment			
		LB	FA	SDB	I	Y	FC	RC
Ø6~Ø16		SPCC	SPCC	SPCC	Carbon steel	Carbon steel	POM	POM

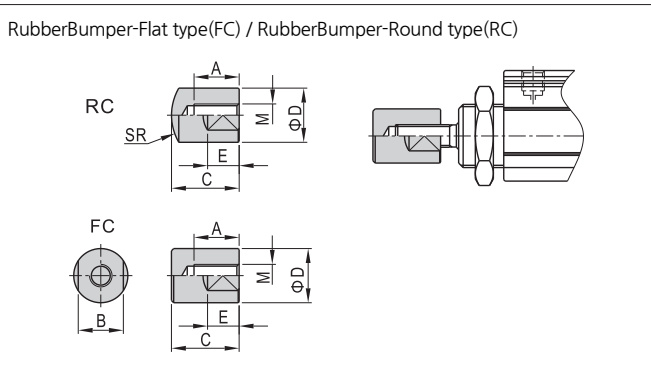
Dimensions-Accessories



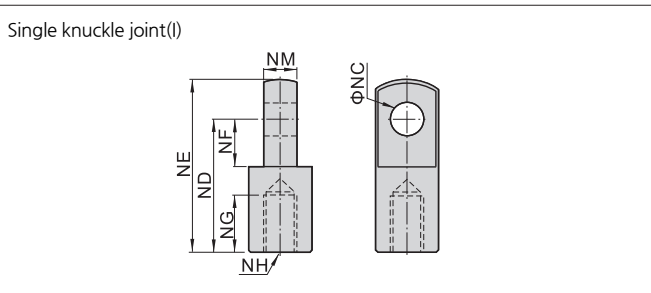
Unit:mm									
Bore size	A	B	C	D	E	F	G	H	K
Ø6	20	28	11	3.4	6.5	10.5	1.5	19	21.5
Ø8	24	33	13	4.5	7	12	1.5	22	23.5
Ø10	24	33	13	4.5	7	12	1.5	22	25
Ø12	30	43	18	5.5	10	16.5	2.5	29	31
Ø16	30	43	18	5.5	10	16.5	2.5	29	32.5



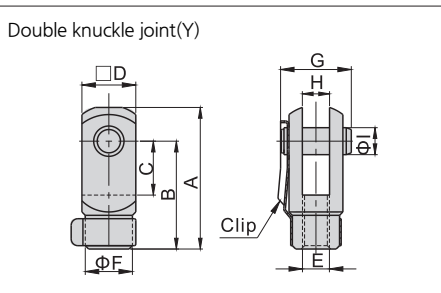
Unit:mm						
Bore size	A	B	C	D	E	F
Ø6	24	32	16	3.4	1.5	18.5
Ø8	28	37	18	4.5	1.5	19.5
Ø10	28	37	18	4.5	1.5	21
Ø12	36	49	22	5.5	2.5	24
Ø16	36	49	22	5.5	2.5	25.5



Unit:mm							
Bore size	A	B	C	D	E	M	SR
Ø6	6	6	11	8	5	M3x0.5	8
Ø8	8	8	13	10	6	M4x0.7	10
Ø10	8	8	13	10	6	M4x0.7	10
Ø12	10	10	15	12	7	M5x0.8	12
Ø16	10	10	15	12	7	M5x0.8	12

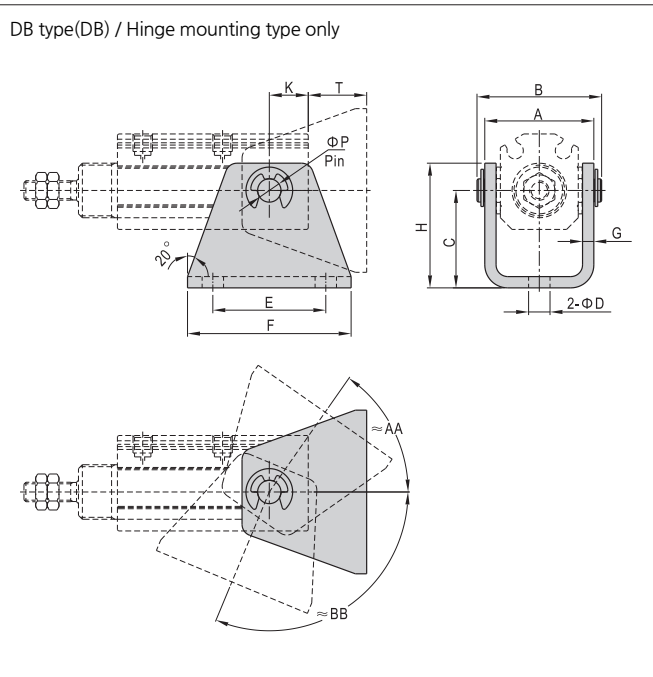


Unit:mm							
Bore size	NC	ND	NE	NF	NG	NH	NM
Ø6	3	12	15.5	5	5	M3x0.5	3
Ø8	4	16	21	6.8	8	M4x0.7	4
Ø10	4	16	21	6.8	8	M4x0.7	4
Ø12	5	25	32	14.1	7.5	M5x0.8	6.3
Ø16	5	25	32	14.1	7.5	M5x0.8	6.3



Unit:mm									
Bore size	A	B	C	D	F	E	G	H	I
Ø6	15.5	12	5	6	6	M3x0.5	9	3	3
Ø8	22	16	8	8	7	M4x0.7	11.5	4	4
Ø10	22	16	8	8	7	M4x0.7	11.5	4	4
Ø12	28	21	10.2	12	10	M5x0.8	15.5	6.5	5
Ø16	28	21	10.2	12	10	M5x0.8	15.5	6.5	5

Dimensions-Accessories



Unit:mm

Bore size	A	AA*	B	BB*	C	D
Ø6	18.5	55°	21.5	110°	16	3.4
Ø8	19	55°	23	110°	18	4.5
Ø10	20.5	65°	24.1	110°	20	4.5
Ø12	25	55°	29	110°	25	5.5
Ø16	28	55°	32	110°	25	5.5

Bore size	E	F	G	H	K	T	P
Ø6	18	26	1.5	20	4	12	3
Ø8	21	30	1.5	23	5	13	4
Ø10	24	33	1.5	25.5	6.5	13.5	5
Ø12	26	39	3	32	10	15	6
Ø16	29	42	3	32	10	15	6

※ AA and BB are for reference only.
Specific value depends on the actual situation.