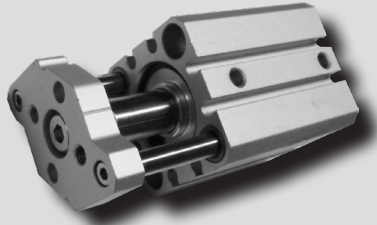


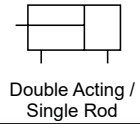
AFM/ADFM series



Features

- The lateral load is improved 2 ~ 4 times compared with AF / ADFSeries.
- The non-rotating accuracy is less than ± 0.2 .
- Thin cylinders are ideal for press-fitting, clamping and single stroke.
- Its axial length is shorter than before, so it can be installed even in tight spaces.

Symbol



How to Order

AFM 32 A - S 30 A73 C

① ② ③ ④ ⑤ ⑥ ⑦

① Series

AFM	Compact guide rod cylinder (Without magnet)
ADFM	Compact guide rod cylinder (With magnet)

② Bore size

12	Ø12	40	Ø40
16	Ø16	50	Ø50
20	Ø20	63	Ø63
25	Ø25	80	Ø80
32	Ø32	100	Ø100

③ Hole type

A	Both end tapped (Standard)
B	Through hole

④ Cylinder stroke

Bore size	Standard stroke
Ø12	5, 10, 15, 20, 25, 30
Ø16	
Ø20	5, 10, 15, 20, 25, 30, 35, 40, 45, 50
Ø25	
Ø32	5, 10, 15, 20, 25, 30, 35, 40, 45, 50, 75, 100
Ø40	
Ø50	
Ø63	5, 10, 15, 20, 25, 30, 35, 40, 45, 50, 75, 100
Ø80	
Ø100	

* Note that longer strokes are classified into long-stroke type.

⑤ Auto switch

Reed A/S	Model	Solid state A/S	Model
A-72	D-A72K	F-7NV	D-F7NVK
A-73	D-A73K	F-7PV	D-F7PVK
A-80	D-A80K	F-7BV	D-F7BVK
A-90	D-A90(V)K	F-9N(V)	D-F9N(V)K
A-93	D-A93(V)K	F-9P(V)	D-F9P(V)K
A-96	D-A96(V)K	F-9B(V)	D-F9B(V)K

* Only for auto switch attached type.
* Refer to Auto Switch Catalogue for more information.

⑥ Number of auto switches

Nil	2 pcs
S	1 pc
N	N pcs (N: 3, 4, 5...)

* Only for auto switch attached type.

⑦ Cushion

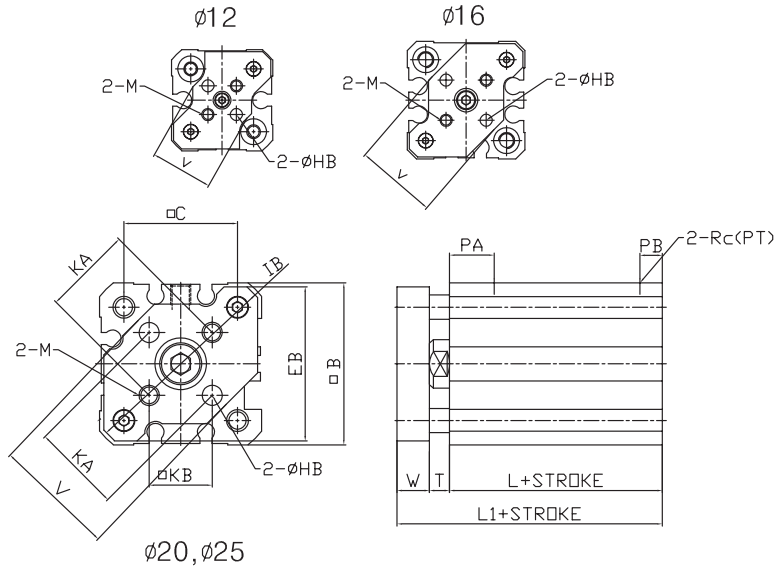
C	Rubber cushion
---	----------------

Specifications

Type	Double acting single rod	Tolerance of stroke		+1.0mm 0
Fluid	Air	Operating piston speed	Ø12~Ø40	50~500mm/s
Proof pressure	1.5 MPa		Ø50~Ø100	50~300mm/s
Min. operating pressure	Ø12, Ø16	Plater non-rotating accuracy	Ø12, Ø16	+0.2'
	Ø20~Ø100		Ø20~Ø100	+0.1'
Ambient & fluid temperature				-10 ~ 60 °C

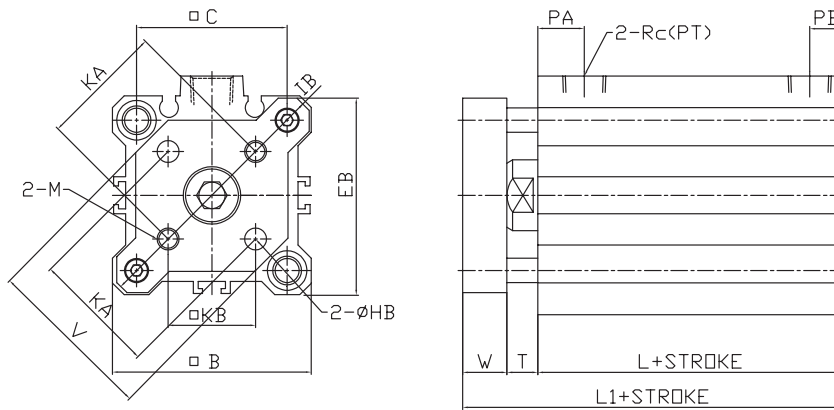
Dimensions

Bore size : $\varnothing 12, \varnothing 16, \varnothing 20, \varnothing 25$



Bore size : $\varnothing 32 \sim \varnothing 100$

$\varnothing 32 \sim \varnothing 100$



Unit:mm

Bore size	□B	□C	T	W	Without magnet(AF M)		With magnet(ADF M)		EB	KA	V	KB	□B	ØHB	M	Rc(PT)	PA	PB
					L	L1	L	L1										
Ø12	25	15.5	3.5	6	17	26.5	28	37.5	24	10±0.1	14.9	7.1	31.5	3 ^{+0.2} ₀	M3xP0.5	M5xP0.8	10	5
Ø16	29	20	3.5	6	18.5	28	30.5	40	28	14±0.1	20	9.9	37	3 ^{+0.2} ₀	M3xP0.5	M5xP0.8	10	5.5
Ø20	36	25.5	4.5	8	19.5	32	31.5	44	34	17±0.1	26	12	45.5	4 ^{+0.2} ₀	M4xP0.7	M5xP0.8	10.5	6
Ø25	40	28	5	8	22.5	35.5	32.5	45.5	38	22±0.1	30	15.6	50.5	5 ^{+0.2} ₀	M5xP0.8	M5xP0.8	11	5.5
Ø32	45	34	7	10	23	40	33	50	43	28±0.2	38	19.8	58.5	5 ^{+0.2} ₀	M5xP0.8	1/8"	10.5	7.5
Ø40	52	40	7	10	29.5	46.5	39.5	56.5	50	33±0.2	46	23.3	67.5	5 ^{+0.2} ₀	M5xP0.8	1/8"	12	8.5
Ø50	64	50	8	12	30.5	50.5	40.5	60.5	62	42±0.2	58	29.7	84.5	6 ^{+0.2} ₀	M6xP1.0	1/4"	10.5	10.5
Ø63	77	60	8	12	36	56	46	66	74	50±0.2	69	35.4	100	6 ^{+0.2} ₀	M6xP1.0	1/4"	15	11
Ø80	98	77	10	14	43.5	67.5	53.5	77.5	95	65±0.2	89	46	129	8 ^{+0.2} ₀	M8xP1.25	3/8"	18	12.5
Ø100	117	94	12	16	53	81	63	91	114	80±0.2	113	56.6	153	10 ^{+0.2} ₀	M10xP1.5	3/8"	23	13