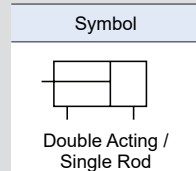


# DR series



## Features

- Built-in magnet standard
- Lateral load resistance and anti rotation with dual rod
- Can select according to sliding bearing, ball bearing application
- Easy to install with its compact size



## How to Order

DR M 10 - 40 - A93K S

①      ②      ③      ④      ⑤      ⑥

### ① Series

DR	Double rod cylinder
----	---------------------

### ② Bearing

M	Sliding bearing
L	Ball bearing

### ③ Bore size

10	16	20	25
Ø10	Ø16	Ø20	Ø25

### ④ Cylinder stroke

Bore size	Standard stroke
Ø10	10, 15, 20, 25, 30, 40, 50
Ø16,20,25	10, 15, 20, 25, 30, 35, 40, 50, 75, 100

### ⑤ Auto switch

Nil		None
A93(V)	Reed A/S	D-A93(V)K
F9N(V)	Solid state A/S	D-F9N(V)K
F-9P(V)		D-F9P(V)K
F-9B(V)		D-F9B(V)K

※ Refer to Auto Switch Catalogue for more information.

### ⑥ Number of auto switches

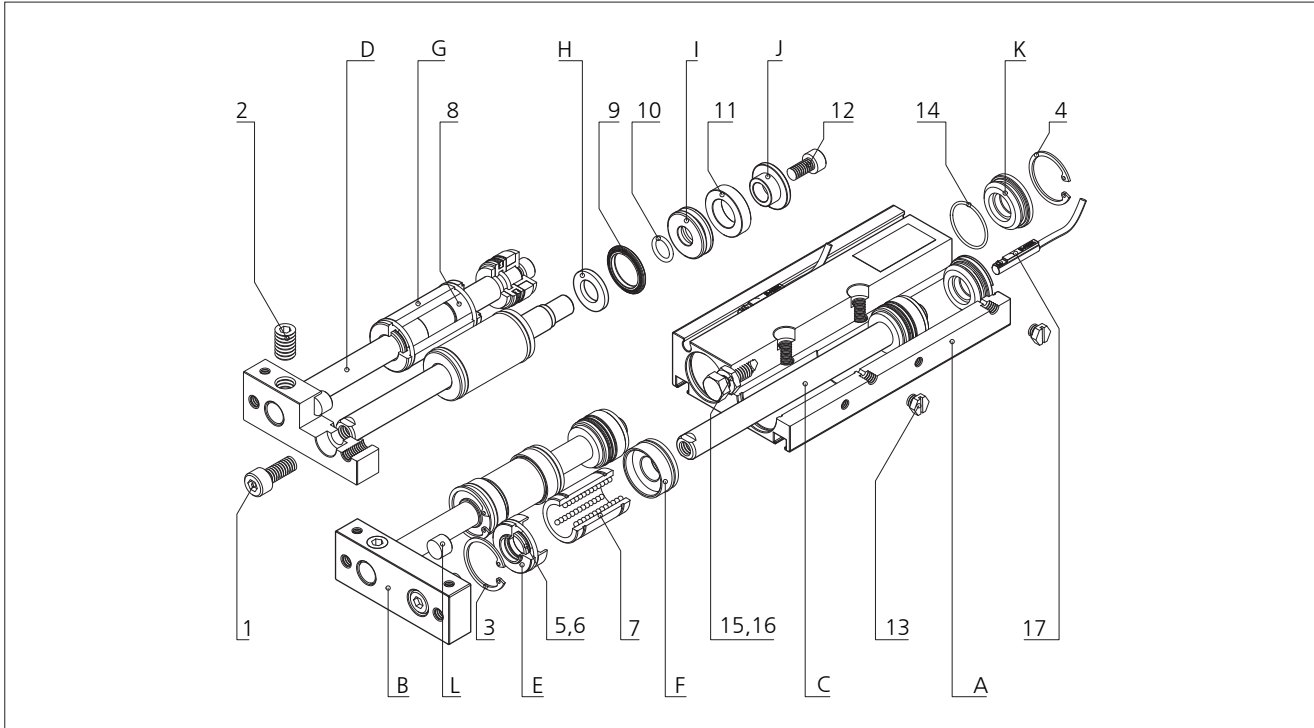
Nil	2 pcs
S	1 pc
N	N pcs (N: 3, 4, 5...)

※ Only for auto switch attached type.

## Specifications

Fluid	Air
Proof pressure	10kgf/cm <sup>2</sup> (1.0MPa)
Max. operating pressure	7kgf/cm <sup>2</sup> (0.7Mpa)
Min. operating pressure	1kgf/cm <sup>2</sup> (0.1MPa)
Ambient & fluid temperature	-10℃ ~ 60℃(No freezing)
Operating piston speed	30~500mm/sec
Cushion	Rubber cushion
Lubrication	Not required(When refueling, turbine oil ISO VG32 or equivalent)
Tolerance of stroke	0 ~ -5mm
Bore size	Ø10, 16, 20: M5x0.8 Ø25 : Rc(PT) 1/8

**Structures**



Part no.	Parts	Material	Remark
A	SLIDE BODY	A6063-T5	
B	FRONT PLATE	A6061	
C	GUIDE ROD-L	SUJ2	DRL
D	GUIDE ROD-M	SM45C	DRM
E	ROD COVER	A6061	DRL
F	ROD HOUSING	A6061	DRL
G	BUSH HOUSING	A6061	DRM
H	DAMPER	URETHANE	
I	PISTON	A6061	
J	M/G COVER	A6061	
K	HEAD COVER	A6061	
L	STOPPER	ACETAL	

Part no.	Parts	Remark
1	PISTON ROD TIGHTENING BOLT	
2	ROD FIXED TANNED BOLT	
3	SNAP RING	
4	SNAP RING	
5	ROD PACKING	
6	O-RING	
7	BALL BUSH	DRL
8	DU BUSH	DRM
9	PISTON PACKING	
10	O-RING	
11	MAGNET	

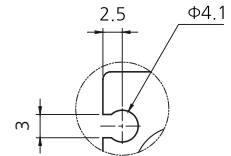
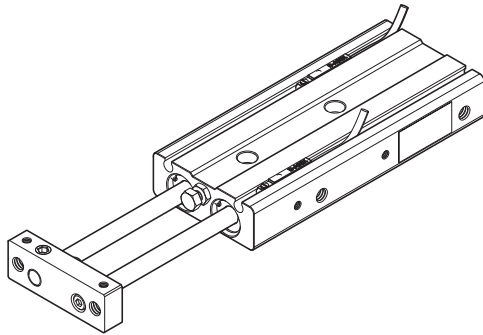
Part no.	Parts	Remark
12	PISTON ROD TIGHTENING BOLT	
13	PLUG-IN BOLT	
14	O-RING	
15	STOPPER NUT	
16	STOPPER BOLT	
17	MAGNETIC SENSOR	

**Mass**

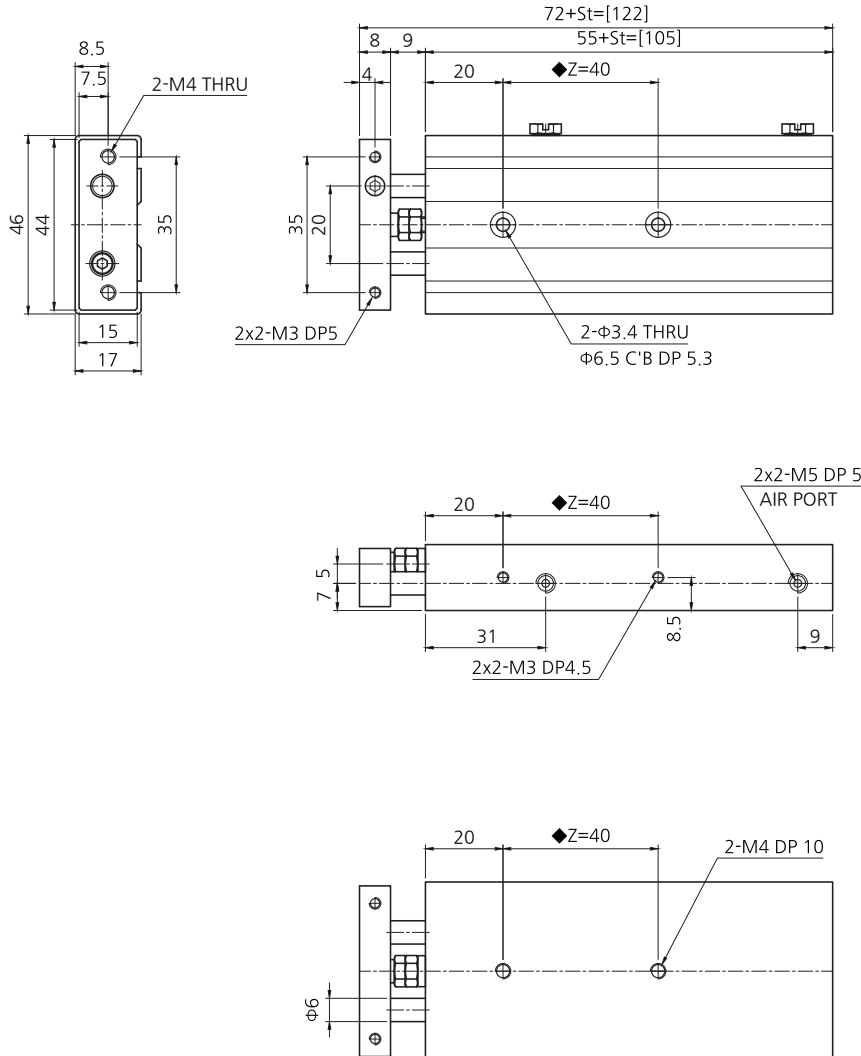
Unit: kg

Type	Standard stroke														
	10	15	20	25	30	35	40	45	50	60	70	75	80	90	100
DRM10	0.16	0.17	0.18	0.19	0.20	0.21	0.22	0.23	0.24	0.26	0.28	0.29	0.30	0.32	0.34
DRL10	0.16	0.17	0.18	0.19	0.20	0.21	0.22	0.23	0.24	0.26	0.28	0.29	0.30	0.32	0.34
DRM16	0.29	0.30	0.32	0.33	0.35	0.36	0.38	0.39	0.41	0.44	0.47	0.48	0.50	0.53	0.56
DRL16	0.32	0.35	0.38	0.41	0.44	0.47	0.50	0.52	0.55	0.61	0.67	0.70	0.73	0.79	0.85
DRM20	0.44	0.45	0.47	0.49	0.51	0.53	0.54	0.57	0.58	0.62	0.65	0.67	0.69	0.72	0.76
DRL20	0.44	0.46	0.48	0.50	0.51	0.53	0.55	0.57	0.59	0.62	0.66	0.68	0.69	0.73	0.77
DRM25	0.66	0.68	0.71	0.74	0.77	0.79	0.82	0.85	0.87	0.93	0.98	1.01	1.04	1.09	1.14
DRL25	0.65	0.68	0.70	0.73	0.75	0.78	0.81	0.83	0.86	0.91	0.96	0.99	1.01	1.07	1.12

**Dimensions-DRM(L)10st:50 Standard**



Sensor Home Detail (SCALE=2/1)

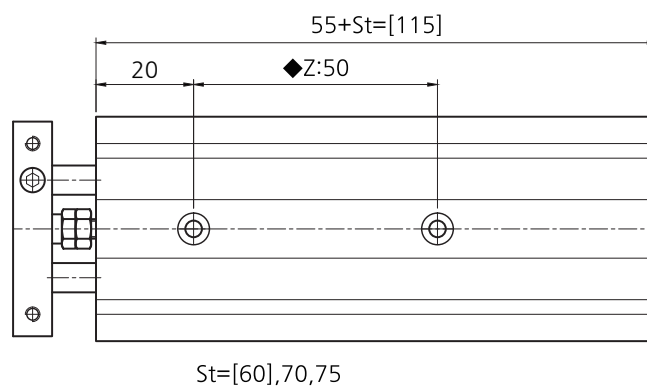
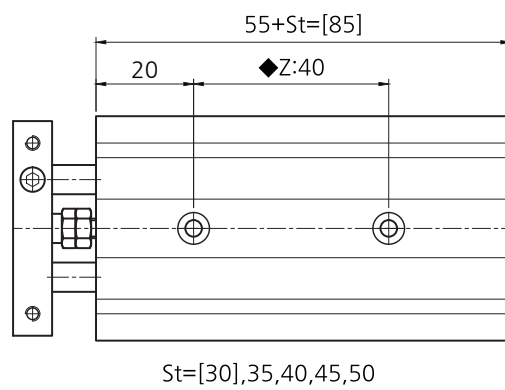
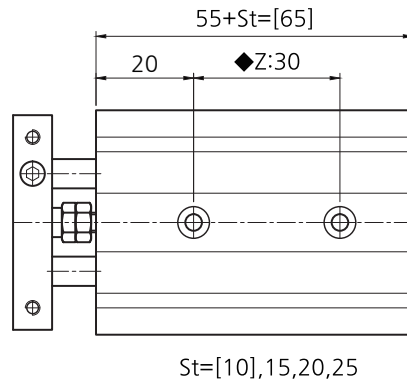


※ Pay attention to the plug protruding from the opposite air port.

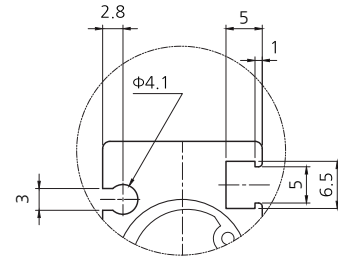
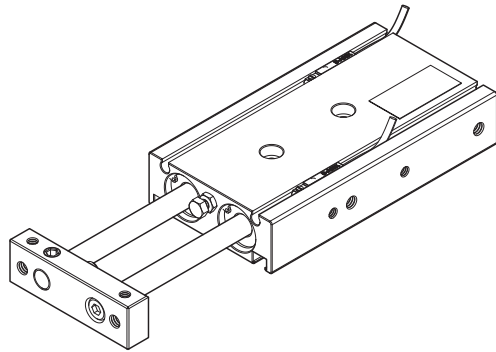
Inventory holding stroke		15	20	25	30	35	40		50			
Custom order stroke	10							45		60	70	75

Inventory holding stroke product maintains more than 10 regular inventory.  
Production starts when 50% is exhausted.  
Custom order stroke products may be delayed due to production start after order.

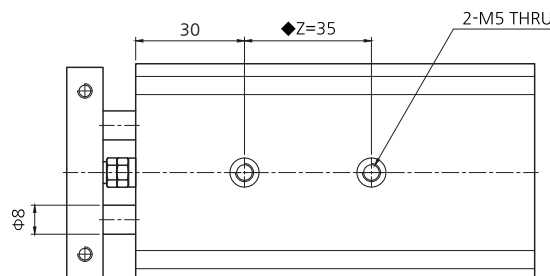
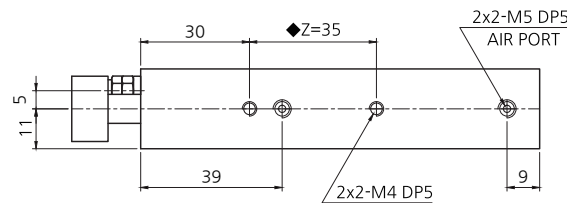
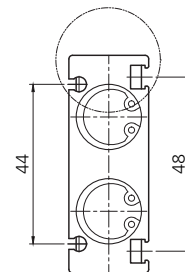
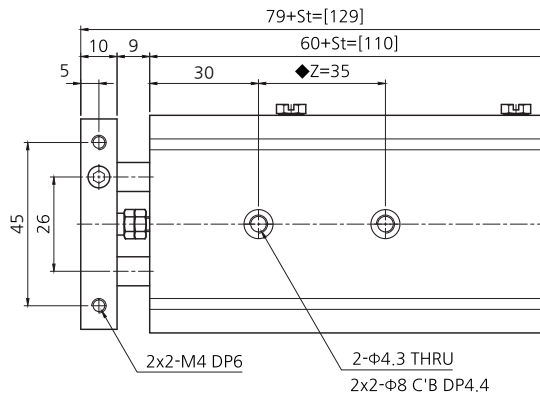
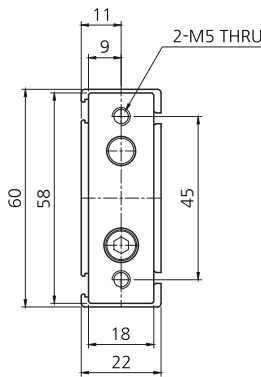
Dimensions-DRM(L)10st ◆ Z Dimensional Change



**Dimensions-DRM(L)16st:50 Standard**



Sensor Home Detail (SCALE=2/1)

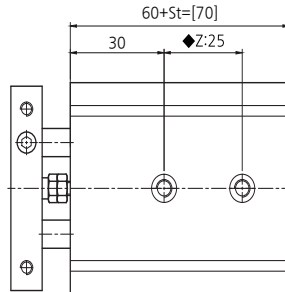


※ Pay attention to the plug protruding from the opposite air port.

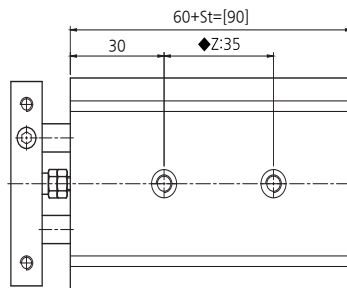
Inventory holding Stroke		15	20	25	30	35	40	50						
Custom order Stroke	10							45	60	70	75	80	90	100

Inventory holding stroke product maintains more than 10 regular inventory.  
Production starts when 50% is exhausted.  
Custom order stroke products may be delayed due to production start after order.

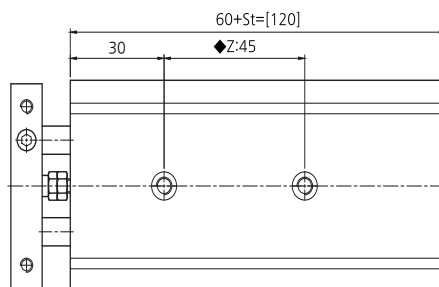
Dimensions-DRM(L)16st ◆ Z Dimensional Change



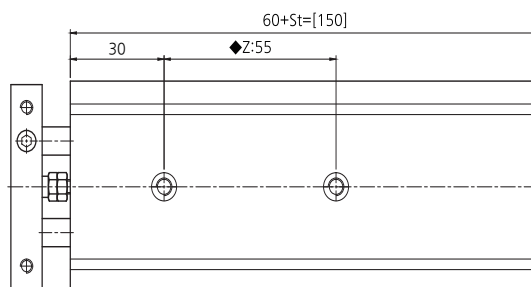
St=[10],15,20,25



St=[30],35,40,45,50

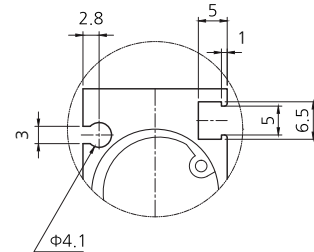
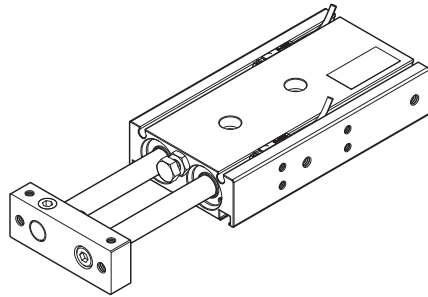


St=[60],70,75,80

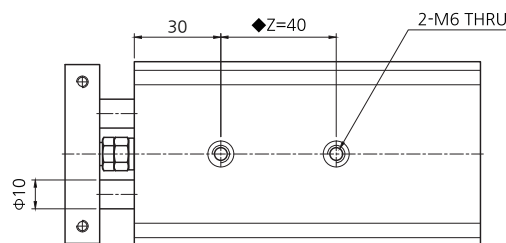
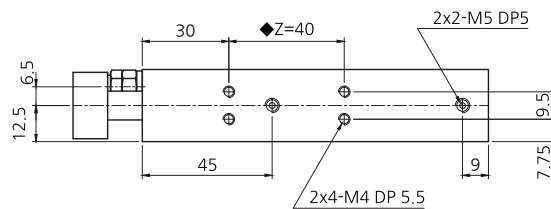
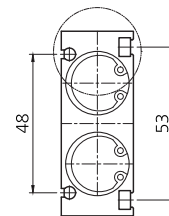
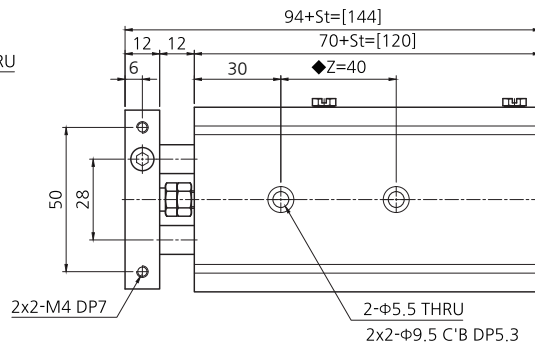
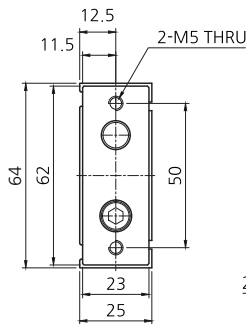


St=[90],100

**Dimensions-DRM(L)20st:50 Standard**



Sensor Home Detail (SCALE=2/1)

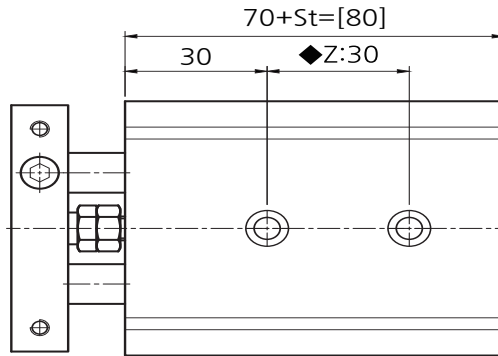


※ Pay attention to the plug protruding from the opposite air port.

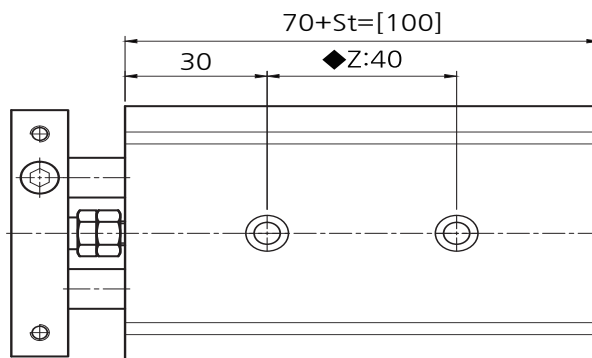
Inventory holding Stroke		15	20	25	30	35	40	50	75	100	
Custom order Stroke	10						45	60	70	80	90

Inventory holding stroke product maintains more than 10 regular inventory.  
Production starts when 50% is exhausted.  
Custom order stroke products may be delayed due to production start after order.

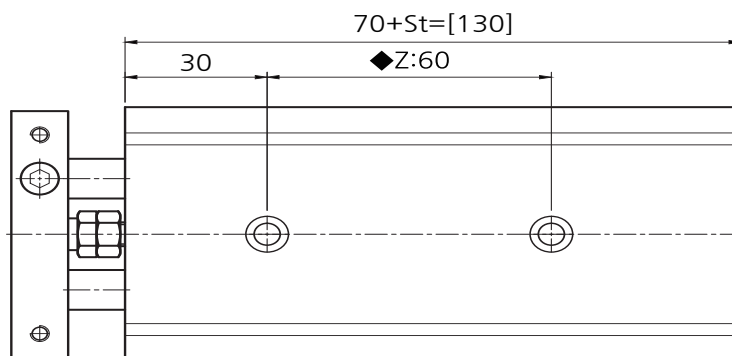
Dimensions-DRM(L)20st ◆ Z Dimensional Change



St=[10],15,20,25



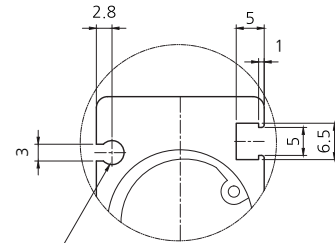
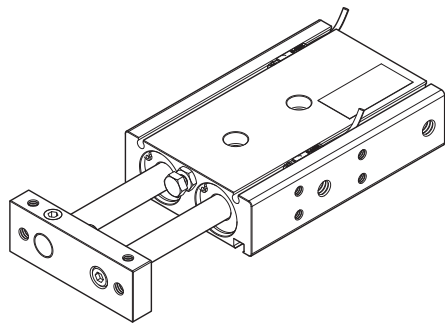
St=[30],35,40,45,50



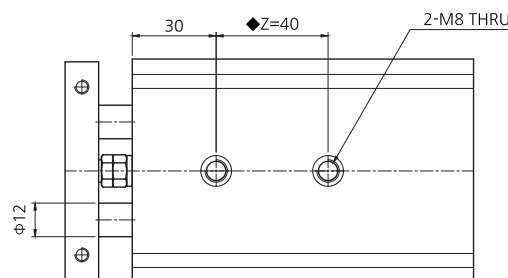
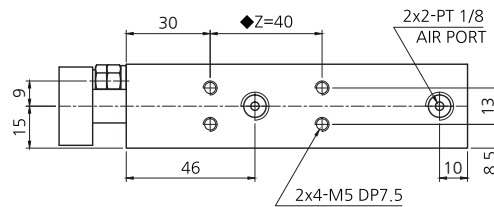
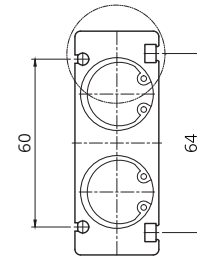
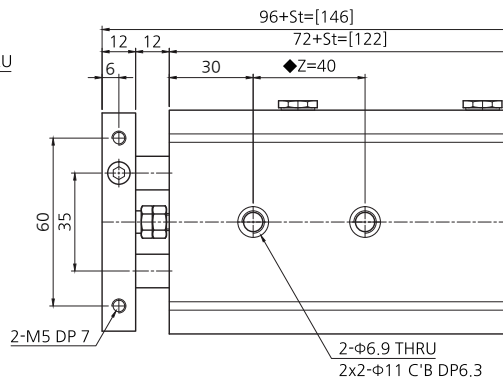
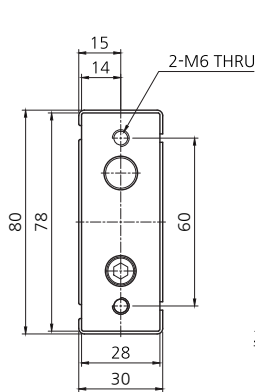
St=[60],70,75,80,90,100



**Dimensions-DRM(L)25st:50 Standard**



Sensor Home Detail (SCALE=2/1)

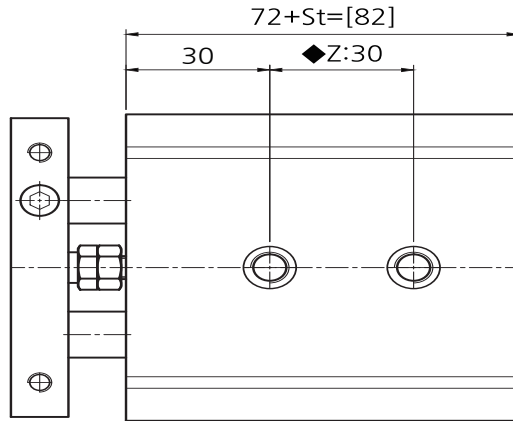


※ Pay attention to the plug protruding from the opposite air port.

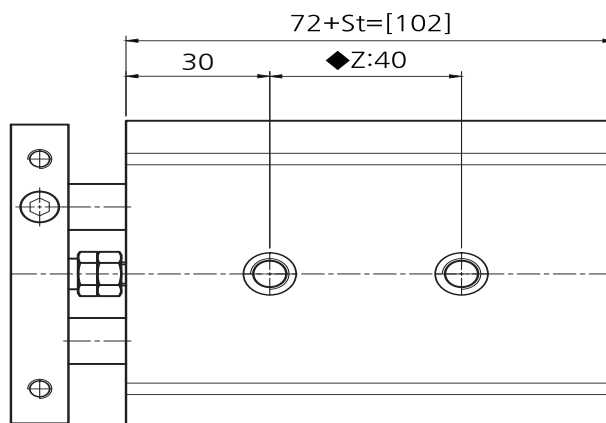
Inventory holding Stroke		15	20	25	30	35	40	50		75		100
Custom order Stroke	10							45	60	70	80	90

Inventory holding stroke product maintains more than 10 regular inventory.  
Production starts when 50% is exhausted.  
Custom order stroke products may be delayed due to production start after order.

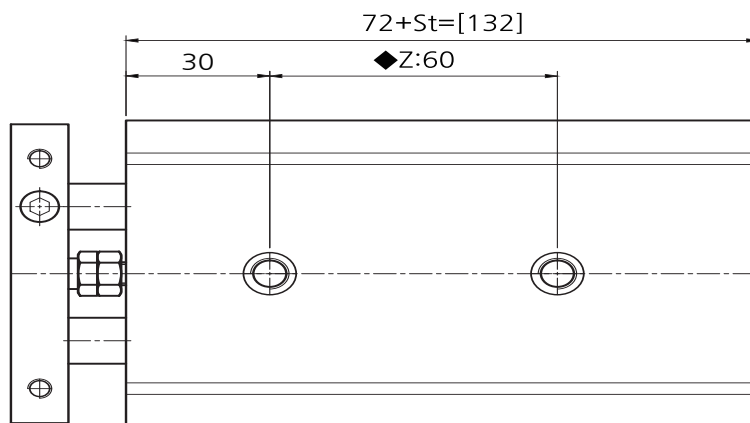
Dimensions-DRM(L)25st ◆ Z Dimensional Change



St=[10],15,20,25



St=[30],35,40,45,50



St=[60],70,75,80,90,100