

# KP125/160A series

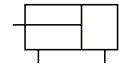


KP125A-H SD63-S20

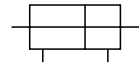
### Features

- Compact hydraulic cylinder with Aluminium tube.
- Double acting hydraulic cylinder for 125kgf/cm<sup>2</sup> or 160kgf/cm<sup>2</sup> with a bore from Ø20 to Ø80.
- Easy to equip with auto switch.
- Excellent appearance and identical dimensions as KP140HS.

### Symbol



Double Acting /  
Single Rod



Double Acting /  
Double Rod

## How to Order

KP125A W   H SD 63 - S 20 N

①  
 ②  
 ③  
 ④  
 ⑤  
 ⑥  
 ⑦  
 ⑧

### ① Series

KP125A	Single rod	125kgf/cm <sup>2</sup>
KP125A W	Double rod	160kgf/cm <sup>2</sup>
KP160A	Single rod (High pressure)	160kgf/cm <sup>2</sup>

※ KP160A is not available for double rod type production.

### ② Seal material

Nil	Nitril urethane (Standard)
1	Nitril rubber
2	Fluoro Rubber
3	Urethane Rubber

### ③ Magnet

Nil	Without magnet
H	With built-in magnet

※ Cylinder with built-in magnet and without built-in magnet have the same dimensions.

### ④ Bore size

20	Ø20
25	Ø25
32	Ø32
40	Ø40
50	Ø50
63	Ø63
80	Ø80

### ⑤ Cylinder stroke (mm)

Bore size	Standard stroke	Max. stroke
Ø20	10, 15, 20,	50
Ø25	25, 30, 40, 50	
Ø32	10, 15, 20, 25, 30, 40, 50, 75, 100	200
Ø40		250
Ø50		
Ø63		
Ø80		-

※ Check buckling, as it varies depending on mounting style.

※ Contact us for longer stroke.

### ⑥ Rod end thread

Nil	Female thread (Standard)
N	Male thread

### ⑦ Auto switch

Reed A/S	Model	Solid state A/S	Model
Z72	D-Z72K	Y59A	D-Y59AK
Z73	D-Z73K	Y7PK	D-Y7PK
Z76	D-Z76K	Y59B	D-Y59BK
Z80	D-Z80K		
Z82	D-Z82K		

※ Only for auto switch attached type.

※ For more information, refer to Auto Switch Catalogue.

### ⑩ Number of auto switches

Nil	2 pcs
1	1 pc
N	N pcs (N:3,4,5...)

※ Only for auto switch attached type.

## Specifications

Type	KP125A	KP160A
Bore size (mm)	Ø20, Ø25, Ø32, Ø40, Ø50, Ø63, Ø80	
Max. operating pressure	125kgf/cm <sup>2</sup> (12.8MPa)	160kgf/cm <sup>2</sup> (16.3MPa)
Proof pressure	188kgf/cm <sup>2</sup> (19.2MPa)	240kgf/cm <sup>2</sup> (24.5MPa)
Min. operating pressure	3kgf/cm <sup>2</sup> (0.31MPa)	
Operating piston speed	8~100mm/s	
Ambient & fluid temperature	-10 ~ 70°C	
Working oil	Petroleum-based fluid	
Tolerance of thread	KS class 2	
Tolerance of stroke	0~+0.8mm	

## Mass

### Double Acting Single Rod Type

Unit : kg

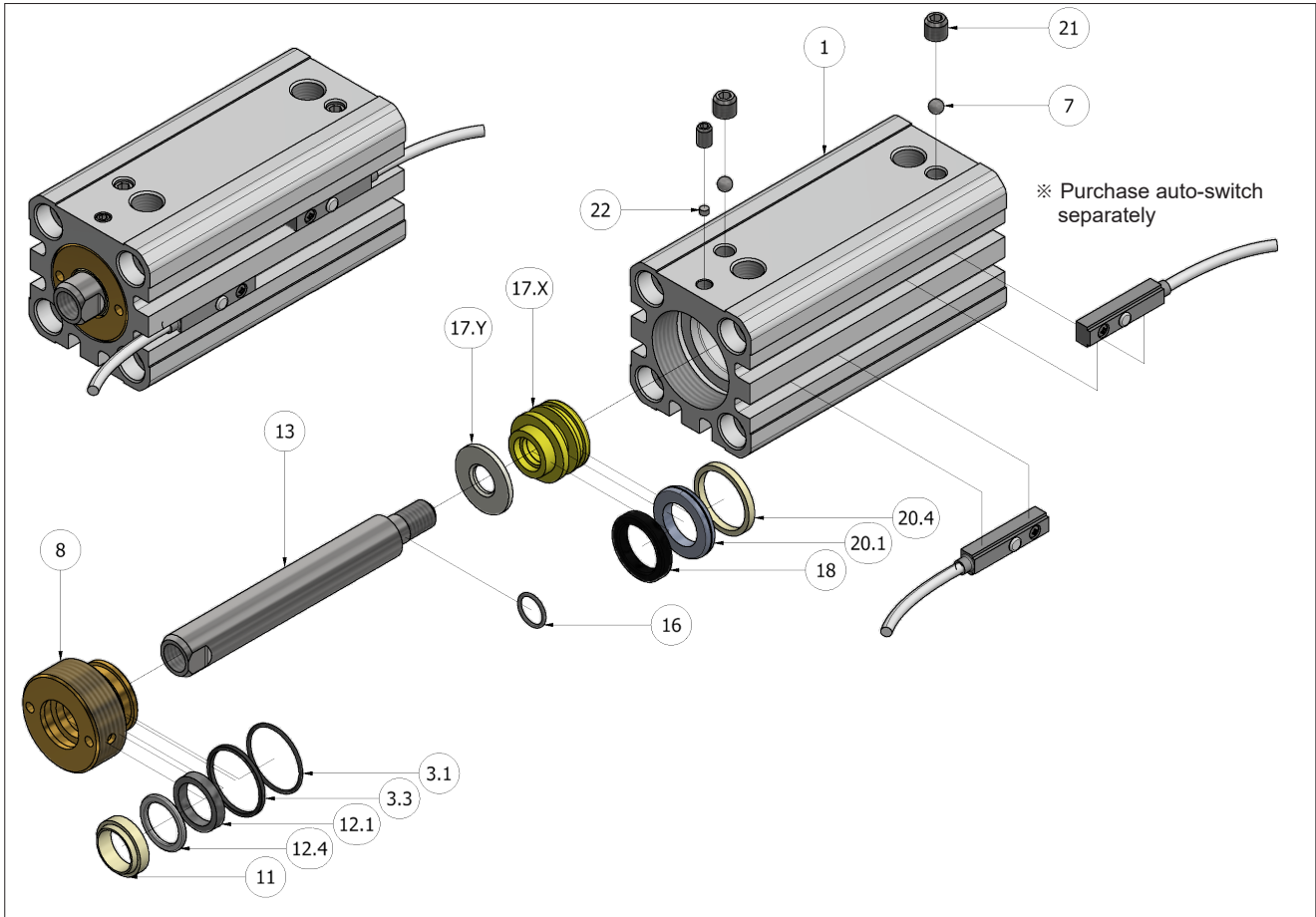
Type	Bore size	Stroke(mm)										Additional mass of male thread
		5	10	15	20	25	30	35	40	45	50	
Standard type	Ø20	0.29	0.28	0.30	0.32	0.35	0.37	0.39	0.41	0.43	0.45	0.02
	Ø25	0.41	0.40	0.43	0.45	0.48	0.51	0.54	0.56	0.59	0.62	0.03
	Ø32	0.68	0.72	0.77	0.81	0.86	0.90	0.94	0.99	1.03	1.08	0.05
	Ø40	0.90	0.95	1.01	1.07	1.12	1.18	1.24	1.29	1.35	1.41	0.10
	Ø50	1.35	1.43	1.50	1.58	1.65	1.73	1.81	1.88	1.96	2.03	0.18
	Ø63	2.10	2.21	2.31	2.42	2.52	2.63	2.74	2.84	2.95	3.05	0.40
	Ø80	3.87	4.02	4.18	4.34	4.49	4.65	4.81	4.96	5.12	5.28	0.76
With auto switch	Ø20	0.30	0.29	0.31	0.33	0.36	0.38	0.40	0.42	0.44	0.46	0.02
	Ø25	0.42	0.41	0.44	0.46	0.49	0.52	0.55	0.57	0.60	0.63	0.03
	Ø32	0.70	0.75	0.80	0.84	0.89	0.93	0.98	1.02	1.07	1.11	0.05
	Ø40	0.93	0.99	1.05	1.11	1.16	1.22	1.28	1.33	1.39	1.45	0.10
	Ø50	1.14	1.49	1.57	1.64	1.72	1.79	1.87	1.94	2.02	2.09	0.18
	Ø63	2.20	2.30	2.40	2.51	2.61	2.72	2.82	2.93	3.03	3.14	0.40
	Ø80	3.98	4.13	4.28	4.44	4.60	4.75	4.91	5.07	5.22	5.38	0.76

### Double Acting Double Rod Type

Unit : kg

Type	Bore size	Stroke(mm)										Additional mass of male thread
		5	10	15	20	25	30	35	40	45	50	
Standard type	Ø20	0.40	0.40	0.43	0.45	0.48	0.50	0.53	0.55	0.58	0.60	0.04
	Ø25	0.57	0.56	0.59	0.62	0.65	0.70	0.72	0.75	0.78	0.81	0.06
	Ø32	1.06	1.11	1.17	1.22	1.28	1.33	1.39	1.44	1.50	1.55	0.10
	Ø40	1.37	1.44	1.51	1.58	1.65	1.72	1.79	1.86	1.93	2.00	0.20
	Ø50	2.00	2.09	2.19	2.29	2.39	2.49	2.59	2.69	2.79	2.89	0.36
	Ø63	3.03	3.17	3.32	3.46	3.61	3.75	3.90	4.04	4.19	4.33	0.80
	Ø80	5.58	5.79	6.01	6.23	6.44	6.66	6.88	7.09	7.31	7.53	1.52
With auto switch	Ø20	0.40	0.41	0.44	0.46	0.48	0.51	0.53	0.56	0.58	0.61	0.04
	Ø25	0.58	0.56	0.60	0.63	0.66	0.69	0.72	0.76	0.79	0.82	0.06
	Ø32	1.09	1.14	1.19	1.25	1.30	1.36	1.41	1.47	1.52	1.58	0.10
	Ø40	1.39	1.46	1.53	1.60	1.67	1.74	1.81	1.88	1.95	2.02	0.20
	Ø50	2.02	2.12	2.22	2.32	2.42	2.52	2.61	2.71	2.81	2.91	0.36
	Ø63	3.05	3.20	3.34	3.49	3.63	3.78	3.92	4.07	4.21	4.35	0.80
	Ø80	5.60	5.82	6.03	6.25	6.47	6.69	6.90	7.12	7.34	7.55	1.52

Structure



Part List

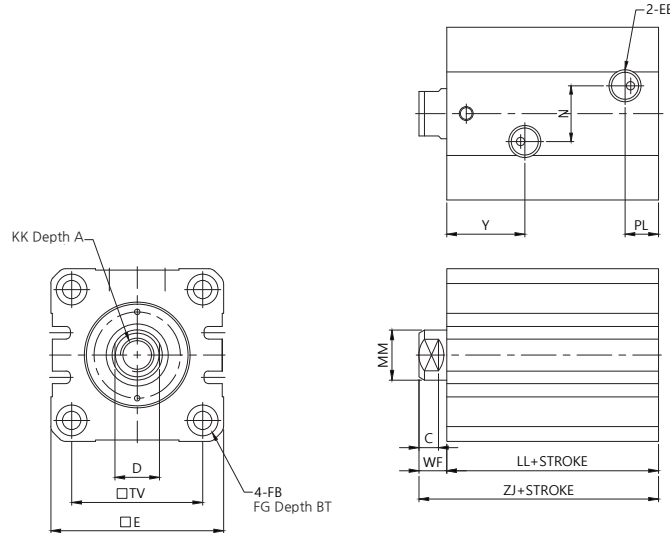
Part no.	Parts	Material	Quantity
1	TUBE	A2014	1
7	STEEL BALL	SUJ2	2
8	ROD COVER	C3604	1
13	ROD	SM45C	1
17.X	PISTON	STS304	1
17.Y	MAGNET HOLDER	STS304	1
21	SET SCREW	SCM435	3
22	SHIM	C3604	1

Packing List

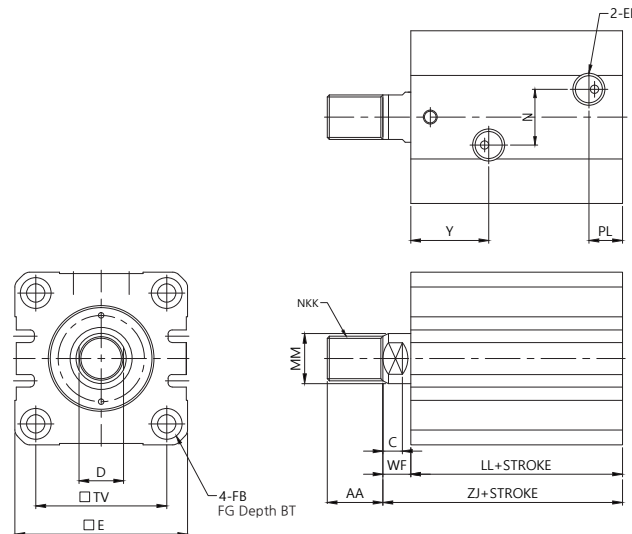
Part no.	3.1	3.3	11	12.1	12.4	16	18	20.1	20.4
Parts	O-RING FOR TUBE	B.U.R	DUST SEAL	ROD PACKING	B.U.R	O-RING FOR ROD	MAGNET	PISTON PACKING	WEAR RING
Material	NBR	PTFE	NBR	NBR	PTFE	NBR	SINTERD ALNICO	URETHANE +POLYKETON	POLYKETON
Quantity	1	1	1	1	1	1	1	1	1
Bore size									
20	1B-S18	FOR S18	SER-12	NMY-12	Ø12x16x1.2t	1B-S8	Ø19xØ14x3.5t	PSO-20	20x17x2t
25	1B-S22.4	FOR S22.4	SER-14	NMY-14	Ø14x18x1.2t	1B-S10	Ø24xØ18x3t	PSO-25	25x22x2t
32	1B-S29	FOR S29	LBH-18	NMY-18(KP125A) USH-18(KP160A)	Ø18x22x1.2t	1B-S12.5	Ø31.5xØ22x3t	PSO-32	32x29x3t
40	1B-G35	FOR G35	LBH-22	USH-22	FOR USH-22	1B-S18	Ø39.5x30x3t	PSQ-40	40x37x3t
50	1B-G45	FOR G45	LBH-28	USH-28	FOR USH-28	1B-S24	Ø49.5x38x3t	PSQ-50	50x47x4t
63	1B-G58	FOR G58	LBH-35	USH-35	FOR USH-35	1B-S28	Ø62.5xØ48x3t	PSQ-63	63x59x4t
80	1B-G75	FOR G75	LBH-45	USH-45	FOR USH-45	1B-S36	Ø79.5xØ68x3t	PSQ-80	80x76x5t

**Dimensions-KP125A, 160A (Standard, Single)**

Single(Female thread) / Bore size Ø20 ~ Ø80



Single(Male thread) / Bore size Ø20 ~ Ø80

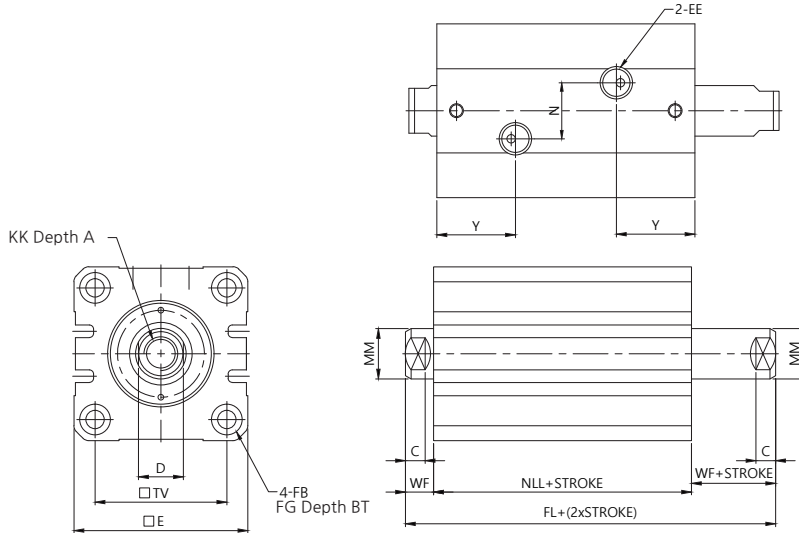


Unit : mm

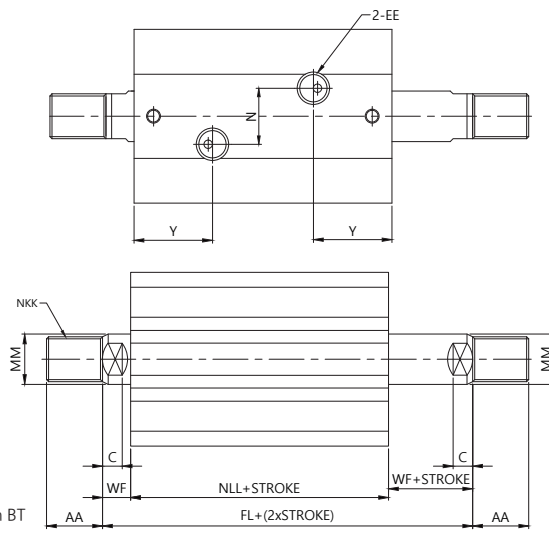
Bore size	Series	A	AA	BT	C	D	□E	EE	FB	FG	KK	LL	N	PL	MM	NKK	□TV	WF	Y	ZJ
φ20	KP125A	10	15	5.4	6	10	□44	Rc(PT)1/8	φ5.5	φ9.5	M8x1.25	43	6	10.5	φ12	M10x1.25	□30	8	18	51
	KP160A																			
φ25	KP125A	12	18	5.4	6	12	□50	Rc(PT)1/8	φ5.5	φ9.5	M10x1.5	45	12	12	φ14	M12x1.25	□36	8	20.5	53
	KP160A																			
φ32	KP125A	15	20	6.5	7	16	□62	Rc(PT)1/4	φ6.6	φ11	M12x1.75	54	20	12	φ18	M16x1.5	□47	10	28	64
	KP160A											56								66
φ40	KP125A	20	20	8.6	7	20	□70	Rc(PT)1/4	φ9	φ14	M16x2	55	20	12	φ22	M20x1.5	□52	10	27	65
	KP160A											65								15
φ50	KP125A	24	35	10.8	8	24	□80	Rc(PT)1/4	φ11	φ17.5	M20x2.5	60	20	12.5	φ28	M24x1.5	□58	11	28	71
	KP160A											70		17.5						34
φ63	KP125A	33	45	13	9	30	□94	Rc(PT)1/4	φ14	φ20	M27x3	67	20	13	φ35	M30x1.5	□69	13	30	80
	KP160A											77		18						90
φ80	KP125A	36	60	15.2	14	41	□114	Rc(PT)3/8	φ16	φ23	M30x3.5	78	30	18	φ45	M39x1.5	□86	17	35	95
	KP160A											88		25.5						105

**Dimensions-KP125A (Standard, Double)**

Double(Female thread) / Bore size Ø20 ~ Ø80



Double(Male thread) / Bore size Ø20 ~ Ø80

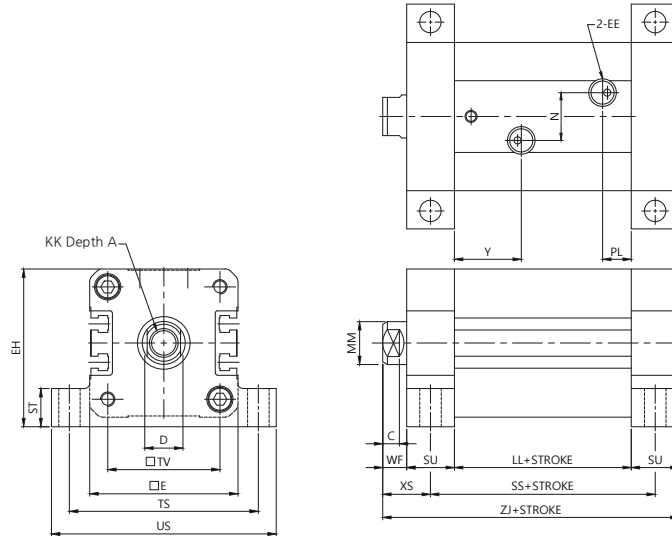


Unit : mm

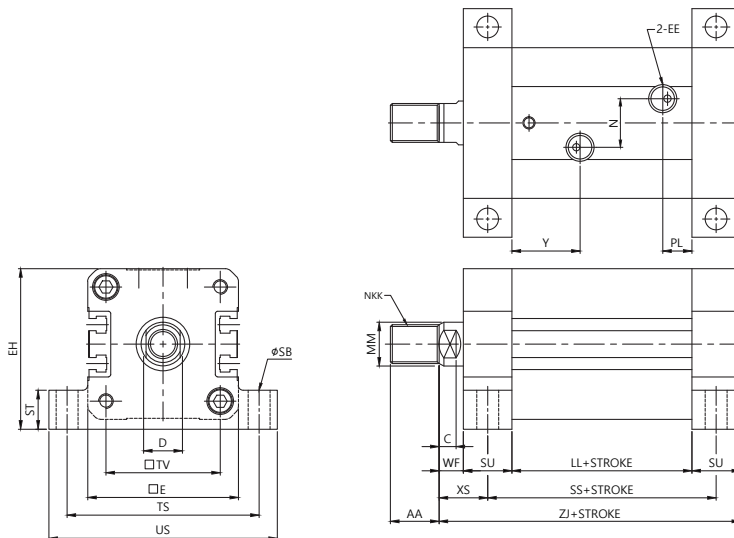
Bore size	A	AA	BT	C	D	□E	EE	FB	FG	KK	N	NLL	MM	NKK	□TV	WF	Y	FL
Φ20	10	15	5.4	6	10	□44	Rc(PT)1/8	Φ5.5	Φ9.5	M8x1.25	6	54	Φ12	M10x1.25	□30	8	18	70
Φ25	12	18	5.4	6	12	□50	Rc(PT)1/8	Φ5.5	Φ9.5	M10x1.5	12	56	Φ14	M12x1.25	□36	8	20.5	72
Φ32	15	20	6.5	7	16	□62	Rc(PT)1/4	Φ6.6	Φ11	M12x1.75	20	72	Φ18	M16x1.5	□47	10	28	92
Φ40	20	20	8.6	7	20	□70	Rc(PT)1/4	Φ9	Φ14	M16x2	20	72	Φ22	M20x1.5	□52	10	27	92
Φ50	24	35	10.8	8	24	□80	Rc(PT)1/4	Φ11	Φ17.5	M20x2.5	20	75	Φ28	M24x1.5	□58	11	28	97
Φ63	33	45	13	9	30	□94	Rc(PT)1/4	Φ14	Φ20	M27x3	20	82	Φ35	M30x1.5	□69	13	30	108
Φ80	36	60	15.2	14	41	□114	Rc(PT)3/8	Φ16	Φ23	M30x3.5	30	95	Φ45	M39x1.5	□86	17	35	129

**Dimensions-KP125A, 160A (LA, Single)**

Single(Female thread) / Bore size Ø20 ~ Ø80



Single(Male thread) / Bore size Ø20 ~ Ø80

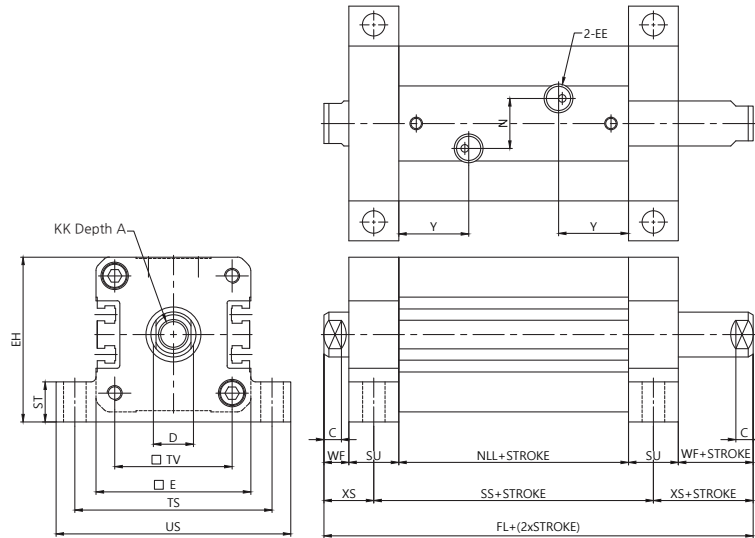


Unit : mm

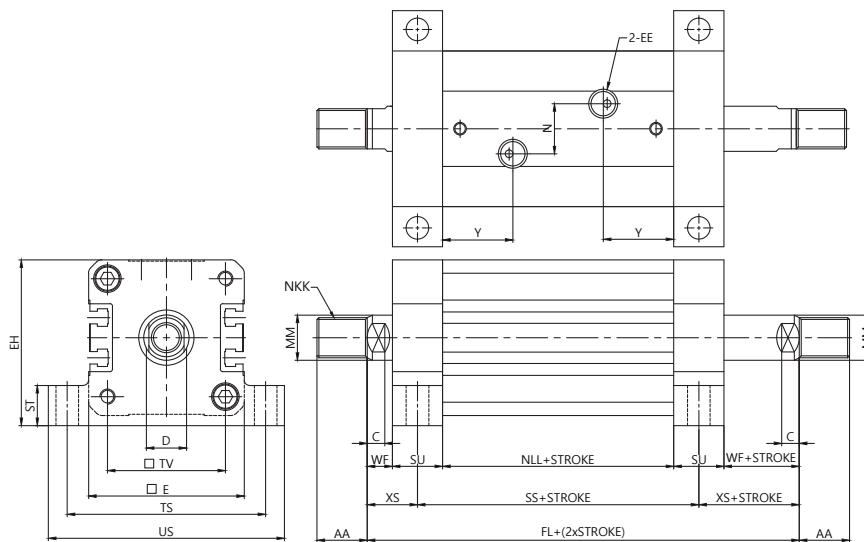
Bore size	Series	A	AA	C	D	□E	EE	KK	LL	N	PL	MM	□TV	WF	Y	ZJ	TS	US	SS	SU	XS	SB	ST	EH	
Ø20	KP125A	10	15	6	10	□44	Rc(PT)1/8	M8x1.25	43	6	10.5	Φ12	M10x1.25	□30	8	18	81	58	70	58	15	15.5	6.6	12	46
	KP160A																								
Ø25	KP125A	12	18	6	12	□50	Rc(PT)1/8	M10x1.5	45	12	12	Φ14	M12x1.25	□36	8	20.5	83	64	76	60	15	15.5	6.6	12	52
	KP160A																								
Ø32	KP125A	15	20	7	16	□62	Rc(PT)1/4	M12x1.75	54	20	12	Φ18	M16x1.5	□47	10	28	104	79	94	74	20	20	9	16	66
	KP160A							56	106								76			85					
Ø40	KP125A	20	20	7	20	□70	Rc(PT)1/4	M16x2	55	20	12	Φ22	M20x1.5	□52	10	27	105	90	108	75	20	20	11	20	72.5
	KP160A							65	15		30					115	85								
Ø50	KP125A	24	35	8	24	□80	Rc(PT)1/4	M20x2.5	60	20	12.5	Φ28	M24x1.5	□58	11	28	121	104	126	85	25	23.5	14	24	85
	KP160A							70	17.5		34					131	95								
Ø63	KP125A	33	45	9	30	□94	Rc(PT)1/4	M27x3	67	20	13	Φ35	M30x1.5	□69	13	30	130	121	146	92	25	25.5	16	30	97
	KP160A							77	18		140					102									
Ø80	KP125A	36	60	14	41	□114	Rc(PT)3/8	M30x3.5	78	30	18	Φ45	M39x1.5	□86	17	35	155	144	172	108	30	32	18	35	117
	KP160A							88	25.5		165					118									

**Dimensions-KP125A (LA, Double)**

Double(Female thread) / Bore size Ø20 ~ Ø80



Double(Male thread) / Bore size Ø20 ~ Ø80

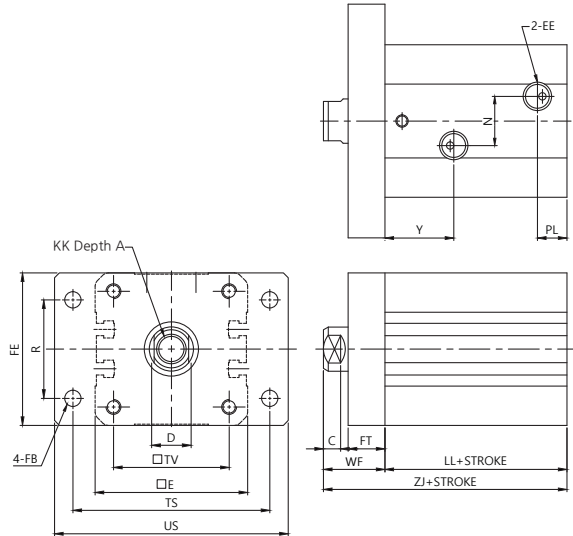


Unit : mm

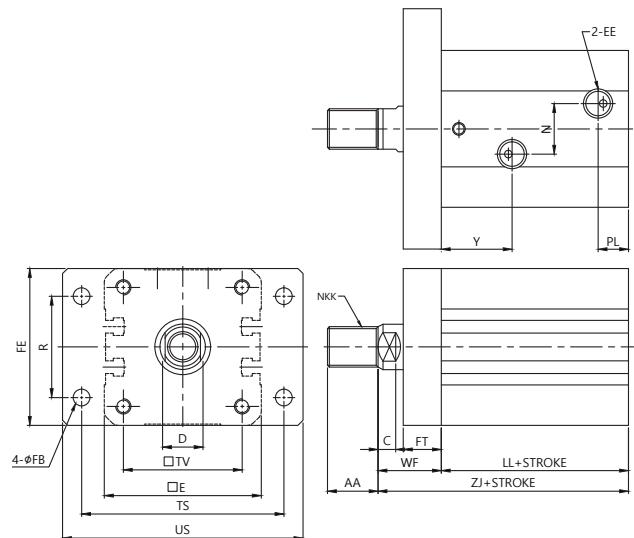
Bore size	A	AA	C	D	□E	EE	KK	N	NLL	MM	NKK	□TV	WF	Y	FL	ST	EH	SU	SS	XS
Φ20	10	15	6	10	□44	Rc(PT)1/8	M8x1.25	6	54	Φ12	M10x1.25	□30	8	18	100	12	46	15	69	15.5
Φ25	12	18	6	12	□50	Rc(PT)1/8	M10x1.5	12	56	Φ14	M12x1.25	□36	8	20.5	102	12	52	15	71	15.5
Φ32	15	20	7	16	□62	Rc(PT)1/4	M12x1.75	20	72	Φ18	M16x1.5	□47	10	28	132	16	66	20	92	20
Φ40	20	20	7	20	□70	Rc(PT)1/4	M16x2	20	72	Φ22	M20x1.5	□52	10	27	132	20	72.5	20	92	20
Φ50	24	35	8	24	□80	Rc(PT)1/4	M20x2.5	20	75	Φ28	M24x1.5	□58	11	28	147	24	85	25	100	23.5
Φ63	33	45	9	30	□94	Rc(PT)1/4	M27x3	20	82	Φ35	M30x1.5	□69	13	30	158	30	97	25	107	23.5
Φ80	36	60	14	41	□114	Rc(PT)3/8	M30x3.5	30	95	Φ45	M39x1.5	□86	17	35	189	35	117	30	125	32

**Dimensions-KP125A, 160A (LA, Single)**

Single(Female thread) / Bore size Ø20 ~ Ø80



Single(Male thread) / Bore size Ø20 ~ Ø80



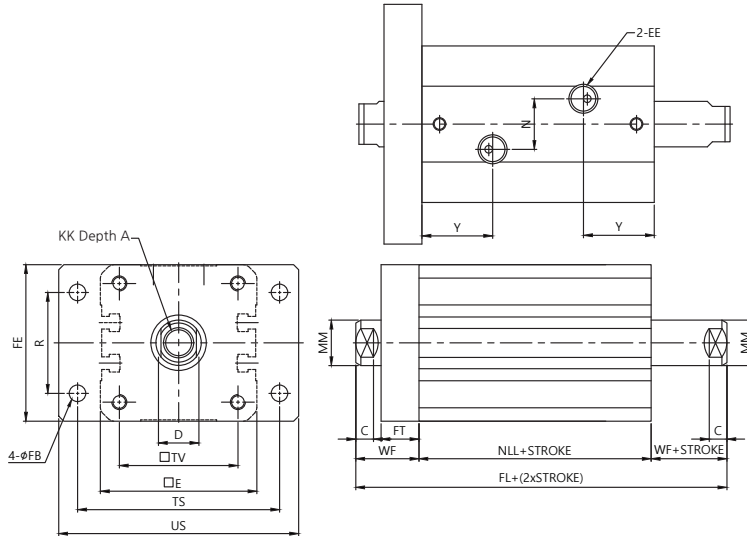
Unit : mm

Bore size	Series	A	AA	C	D	□E	EE	KK	LL	N	PL	MM	NKK	□TV	WF	Y	ZJ	TS	US	FB	FT	R	FE
Ø20	KP125A	10	15	6	10	□44	Rc(PT)1/8	M8x1.25	43	6	10.5	Φ12	M10x1.25	□30	8	18	61	60	75	5.5	10	30	46
	KP160A																						
Ø25	KP125A	12	18	6	12	□50	Rc(PT)1/8	M10x1.5	45	12	12	Φ14	M12x1.25	□36	8	20.5	63	66	80	5.5	10	36	52
	KP160A																						
Ø32	KP125A	15	20	7	16	□62	Rc(PT)1/4	M12x1.75	54	20	12	Φ18	M16x1.5	□47	10	28	79	80	95	6.6	15	40	62
	KP160A							56	81														
Ø40	KP125A	20	20	7	20	□70	Rc(PT)1/4	M16x2	55	20	12	Φ22	M20x1.5	□52	10	27	85	96	118	11	20	46	70
	KP160A							65	15		95												
Ø50	KP125A	24	35	8	24	□80	Rc(PT)1/4	M20x2.5	60	20	12.5	Φ28	M24x1.5	□58	11	28	91	108	135	14	20	58	85
	KP160A							70	17.5		101												
Ø63	KP125A	33	45	9	30	□94	Rc(PT)1/4	M27x3	67	20	13	Φ35	M30x1.5	□69	13	30	100	124	150	14	20	65	98
	KP160A							77	18		110												
Ø80	KP125A	36	60	14	41	□114	Rc(PT)3/8	M30x3.5	78	30	18	Φ45	M39x1.5	□86	17	35	120	154	185	18	25	87	118
	KP160A							88	25.5		130												

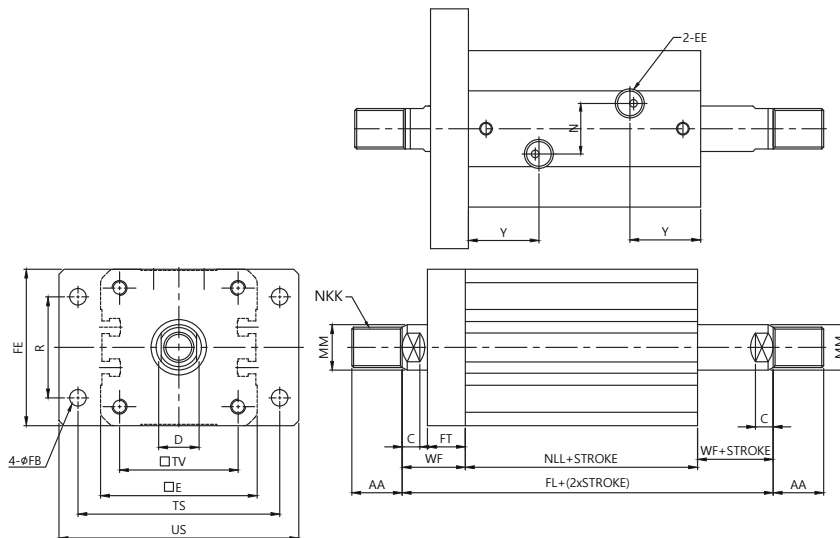


**Dimensions-KP125A (FA, Double)**

Double(Female thread) / Bore size  $\varnothing 20 \sim \varnothing 80$



Double(Male thread) / Bore size  $\varnothing 20 \sim \varnothing 80$



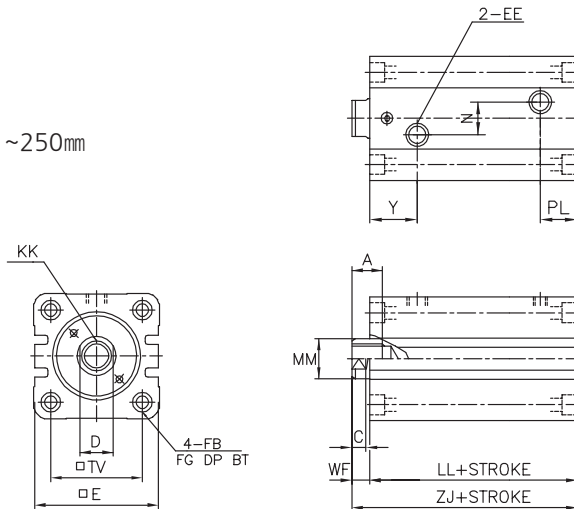
Unit : mm

Bore size	A	AA	C	D	□E	EE	KK	N	NLL	MM	NKK	□TV	WF	Y	FL	TS	US	R	FE	FB	FT
φ20	10	15	6	10	□44	Rc(PT)1/8	M8x1.25	6	54	φ12	M10x1.25	□30	8	18	70	60	75	30	46	5.5	10
φ25	12	18	6	12	□50	Rc(PT)1/8	M10x1.5	12	56	φ14	M12x1.25	□36	8	20.5	72	66	80	36	52	5.5	10
φ32	15	20	7	16	□62	Rc(PT)1/4	M12x1.75	20	72	φ18	M16x1.5	□47	10	28	92	80	95	40	62	6.6	15
φ40	20	20	7	20	□70	Rc(PT)1/4	M16x2	20	72	φ22	M20x1.5	□52	10	27	92	96	118	46	70	11	20
φ50	24	35	8	24	□80	Rc(PT)1/4	M20x2.5	20	75	φ28	M24x1.5	□58	11	28	97	108	135	58	85	14	20
φ63	33	45	9	30	□94	Rc(PT)1/4	M27x3	20	82	φ35	M30x1.5	□69	13	30	108	124	150	65	98	14	20
φ80	36	60	14	41	□114	Rc(PT)3/8	M30x3.5	30	95	φ45	M39x1.5	□86	17	35	129	154	185	87	118	18	25

**Dimensions-KP125A (LA, Double)**

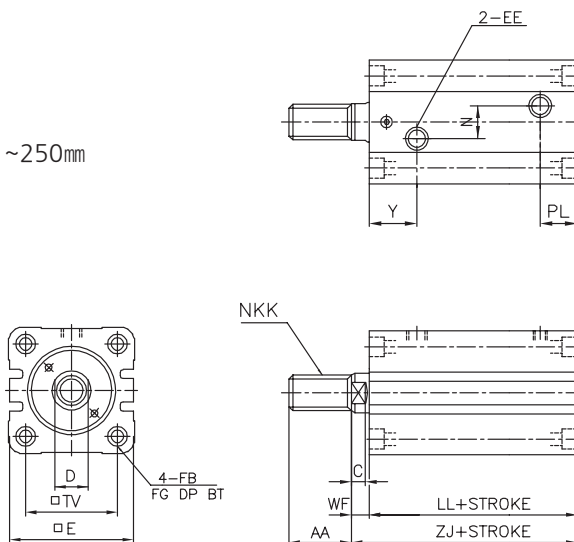
Double(Female thread) / Bore size  $\varnothing 32 \sim \varnothing 80$

Stroke limit  
 $\varnothing 32 = 101 \sim 200\text{mm}$   
 $\varnothing 40, \varnothing 50, \varnothing 63, \varnothing 80 = 101 \sim 250\text{mm}$



Double(Male thread) / Bore size  $\varnothing 32 \sim \varnothing 80$

Stroke limit  
 $\varnothing 32 = 101 \sim 200\text{mm}$   
 $\varnothing 40, \varnothing 50, \varnothing 63, \varnothing 80 = 101 \sim 250\text{mm}$

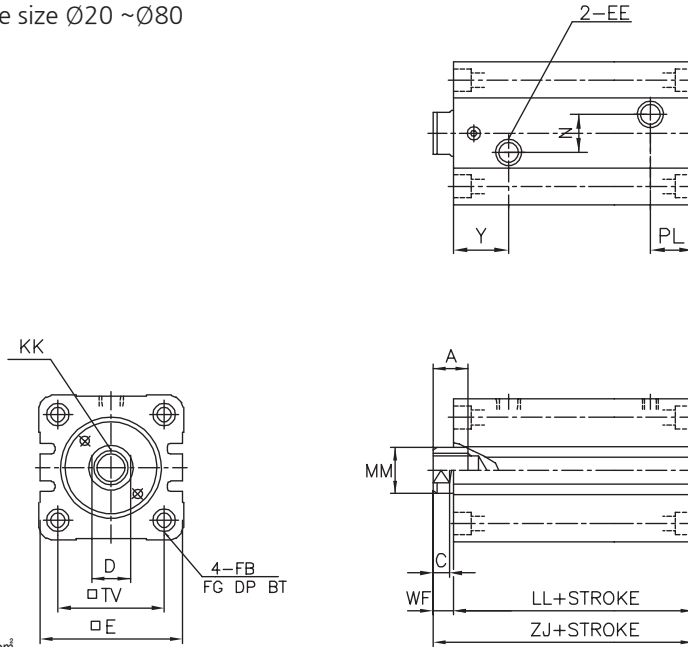


Unit : mm

No. Bore size	Stroke	A	AA	BT	C	D	□E	EE	FB	FG	KK	LL	N	PL	MM	NKK	□TV	WF	Y	ZJ
$\varnothing 32$	101~200	15	20	12	7	16	□62	Rc(PT)1/4	$\varnothing 6.6$	$\varnothing 11$	M12×1.75	72	20	28	$\varnothing 18$	M16×1.5	□47	10	28	82
$\varnothing 40$	101~250	20	20	16	7	20	□70	Rc(PT)1/4	$\varnothing 9$	$\varnothing 14$	M16×2	72	20	27	$\varnothing 22$	M20×1.5	□52	10	27	82
$\varnothing 50$	101~250	24	35	20	8	24	□80	Rc(PT)1/4	$\varnothing 11$	$\varnothing 17.5$	M20×2.5	75	20	28	$\varnothing 28$	M24×1.5	□58	11	28	86
$\varnothing 63$	101~250	33	45	24	9	30	□94	Rc(PT)1/4	$\varnothing 14$	$\varnothing 20$	M27×3	82	20	30	$\varnothing 35$	M30×1.5	□69	13	30	95
$\varnothing 80$	101~250	36	60	28	14	41	□114	Rc(PT)3/8	$\varnothing 16$	$\varnothing 23$	M30×3.5	95	30	35	$\varnothing 45$	M39×1.5	□86	17	35	112

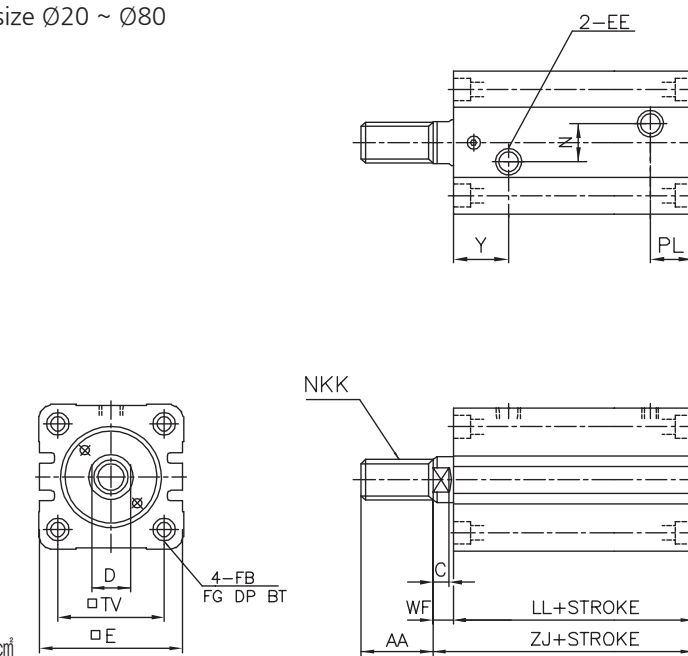
**Dimensions-KP160A (SD)**

Single(Female thread) / Bore size  $\varnothing 20 \sim \varnothing 80$



Working pressure: 160kgf/cm<sup>2</sup>

Single(Male thread) / Bore size  $\varnothing 20 \sim \varnothing 80$



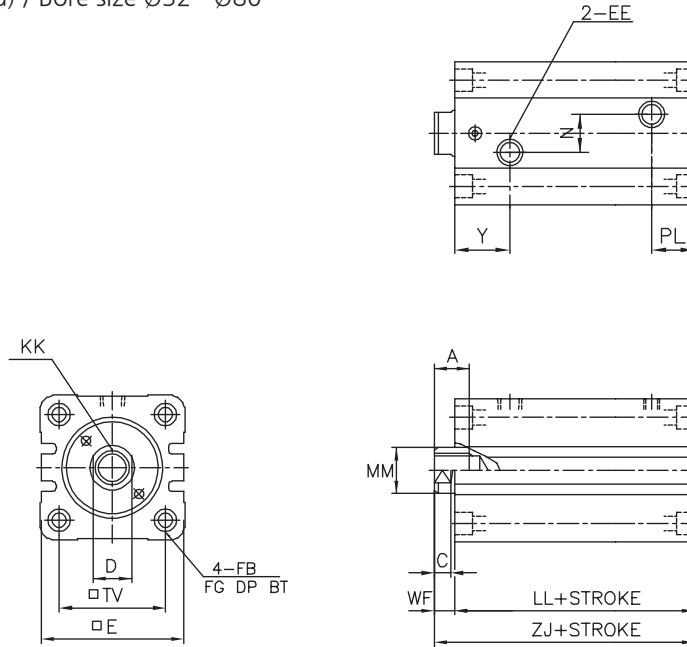
Working pressure: 160kgf/cm<sup>2</sup>

Unit : mm

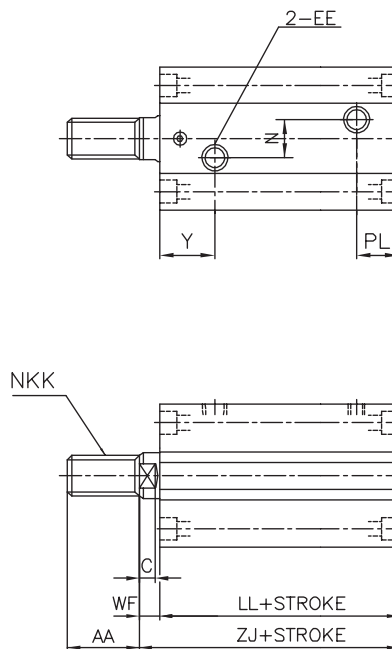
No. Bore size	A	AA	BT	C	D	□E	EE	FB	FG	KK	LL	N	PL	MM	NKK	□TV	WF	Y	ZJ
Ø20	10	15	5.4	6	10	□44	Rc(PT)1/8	Ø5.5	Ø9.5	M8×1.25	43	6	10.5	Ø12	M10×1.25	□30	8	18	51
Ø25	12	18	5.4	6	12	□50	Rc(PT)1/8	Ø5.5	Ø9.5	M10×1.5	45	12	12	Ø14	M12×1.25	□36	8	20.5	53
Ø32	15	20	6.5	7	14	□62	Rc(PT)1/4	Ø6.6	Ø11	M12×1.75	56	20	12	Ø18	M16×1.5	□47	10	28	66
Ø40	20	20	8.6	7	19	□70	Rc(PT)1/4	Ø9	Ø14	M16×2	65	20	15	Ø22	M20×1.5	□52	10	30	75
Ø50	24	35	10.8	8	24	□80	Rc(PT)1/4	Ø11	Ø17.5	M20×2.5	70	20	17.5	Ø28	M24×1.5	□58	11	34	81
Ø63	33	45	13	9	30	□94	Rc(PT)1/4	Ø14	Ø20	M27×3	77	20	18	Ø35	M30×1.5	□69	13	35	90
Ø80	36	60	15.2	14	41	□114	Rc(PT)3/8	Ø16	Ø23	M30×3.5	88	30	25.5	Ø45	M39×1.5	□86	17	35	105

**Dimensions-KP160A, Long stroke type (SD)**

Single(Female thread) / Bore size  $\varnothing 32 \sim \varnothing 80$



Single(Male thread) / Bore size  $\varnothing 32 \sim \varnothing 80$



Unit : mm

No. Bore size	Stroke	A	AA	BT	C	D	□E	EE	FB	FG	KK	LL	N	PL	MM	NKK	□TV	WF	Y	ZJ
Ø32	101~200	15	20	6.5	7	14	□62	Rc(PT)1/4	Ø6.6	Ø11	M12×1.75	72	20	28	Ø18	M16×1.5	□47	10	28	82
Ø40	101~250	20	20	8.6	7	19	□70	Rc(PT)1/4	Ø9	Ø14	M16×2	82	20	30	Ø22	M20×1.5	□52	10	30	92
Ø50	101~250	24	35	10.8	8	24	□80	Rc(PT)1/4	Ø11	Ø17.5	M20×2.5	85	20	34	Ø28	M24×1.5	□58	11	34	96
Ø63	101~250	33	45	13	9	30	□94	Rc(PT)1/4	Ø14	Ø20	M27×3	92	20	35	Ø35	M30×1.5	□69	13	35	105
Ø80	101~250	36	60	15.2	14	41	□114	Rc(PT)3/8	Ø16	Ø23	M30×3.5	98	30	35	Ø45	M39×1.5	□86	17	35	115