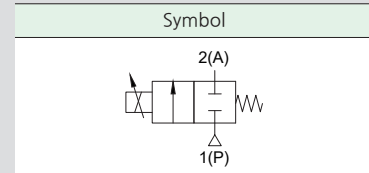


KPCS series



KPCS10-1502-12



How to Order

KPCS10 - ① 15 02 - ② 08

① Orifice

15	Ø1.5
20	Ø2.0
25	Ø2.5
30	Ø3.0
45	Ø4.5
55	Ø5.5

② Power consumption

08	8W
12	12W

Specifications

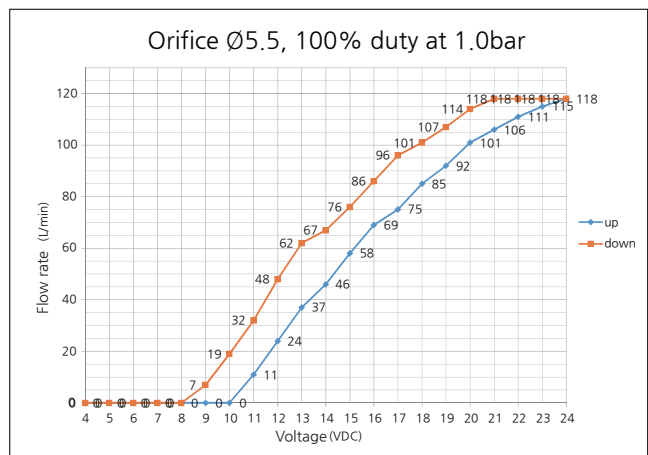
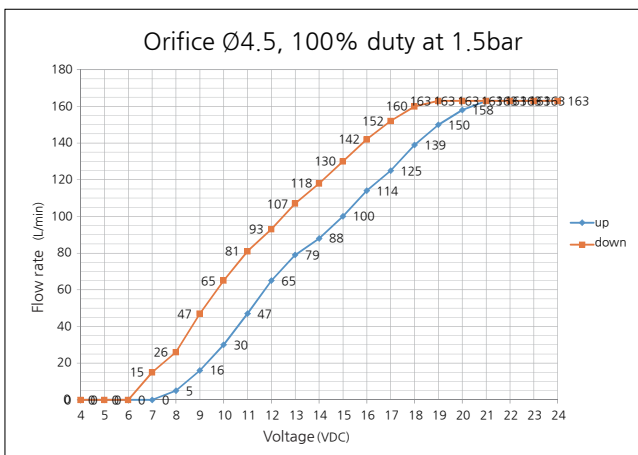
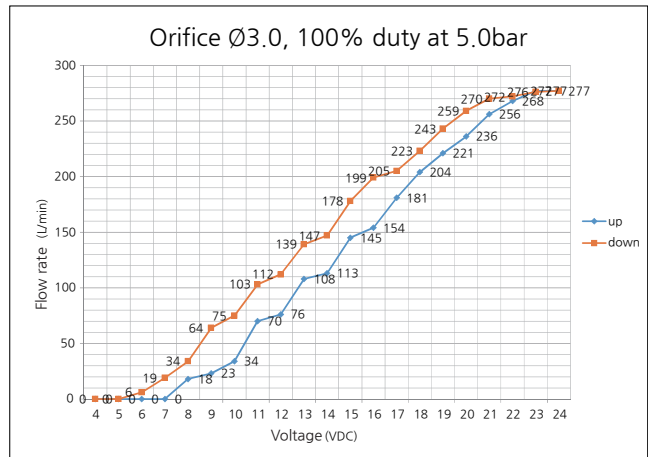
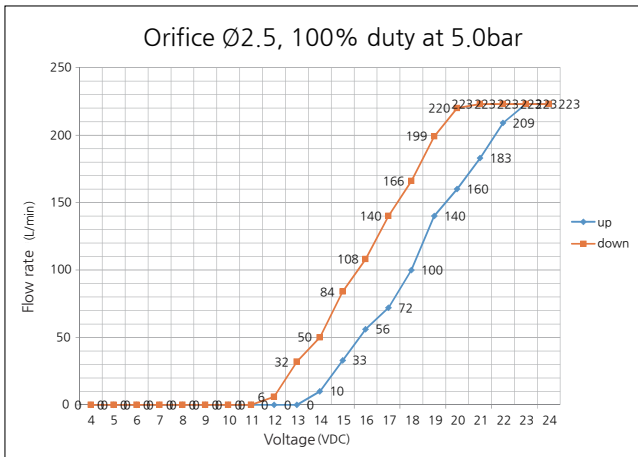
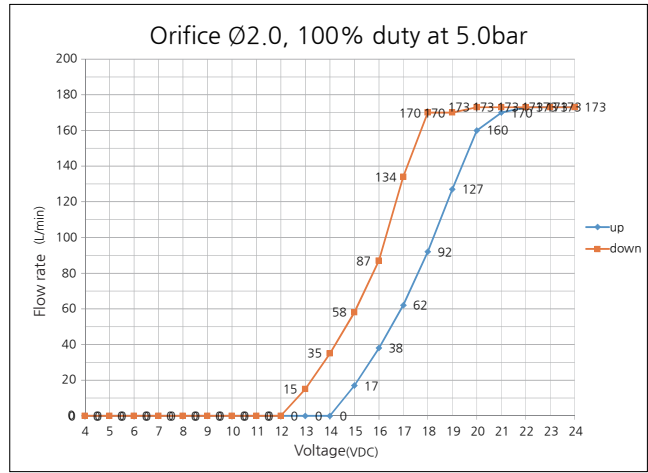
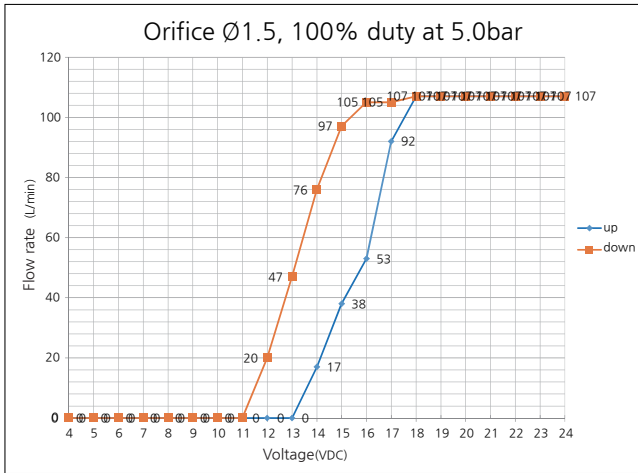
Fluid	Air, Inert gas
Function	Normally Closed
Motion type	Proportional Control (voltage change)
Port size	Rc(PT) 1/4
Coil insulation	F Class(155°C)
Lubrication	Not required
Installation method	Free installation in any direction
Ambient temperature	-20°C ~ +60°C (No freezing)

Features

- The solenoid valve is designed to be output in proportion to the voltage change.
- Minimum operating differential pressure is not required.
- This valve is not suitable for static fluids or fluids capable of depositing solids, calcareous or similar residues.

Model	Orifice	Power consumption(watt)	Maximum Operating Pressure Differential	Effective sectional area	
KPCS10-1502-08	Ø1.5	8W	10bar	1.5mm ²	
KPCS10-1502-12		12W			
KPCS10-2002-08	Ø2.0	8W		8bar	2.7mm ²
KPCS10-2002-12		12W			
KPCS10-2502-08	Ø2.5	8W	5bar	4.4mm ²	
KPCS10-2502-12		12W			
KPCS10-3002-08	Ø3.0	8W	1.5bar	6.5mm ²	
KPCS10-3002-12		12W			
KPCS10-4502-08	Ø4.5	8W	1bar	13.7mm ²	
KPCS10-4502-12		12W			
KPCS10-5502-12	Ø5.5	12W		18.5mm ²	

Flow graph of the valve (According Voltage)



Dimensions

