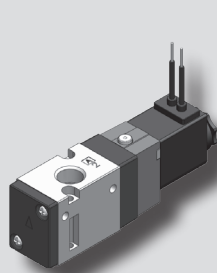
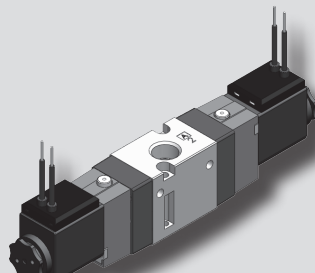


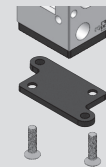
KS342 series



KS342S-2G



KS342D-2GL



Option Bracket

※ Bracket only applicable for KS342S/O series.
(Option:1 bracket, 2 mounting screws)

How to Order



① Port type

Nil	Rc(PT) (Standard)
G	G

② Function

Function	Symbol
S Single acting, N.C	
O Single acting, N.O	
D Double acting	

③ Voltage

1	AC 100/110V 50/60Hz
2	AC 200/220V 50/60Hz
3	DC 24V
4	DC 12V

※ Custom made with AC24V, AC48V, DC48V, DC100V is available.

④ Electrical connection

GL	Lead wire & lamp
G	Lead wire
D	DIN coil + DIN connector
DUL	DIN coil + DIN connector (UL, CSA Approval)
Z	DIN coil + DIN connector with lamp + Surge killer
ZUL	DIN coil + DIN connector with lamp + Surge killer (UL, CSA Approval)
GU	Lamp with 90°plug(400mm)
GP	Lamp with 180°plug(400mm)
DEXT4	Explosion proof
M	DIN coil + Metal DIN connector

⑤ Manual override

Nil	Manual button (Standard)
L	Lock

⑥ Option

Nil	Without bracket
B	With bracket

Specifications

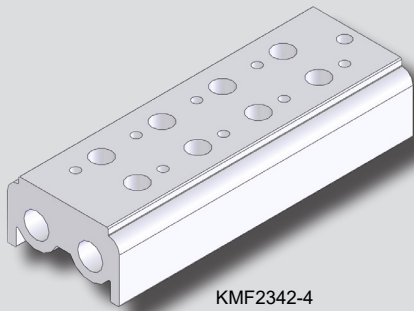
Type	S / O	D
Fluid	Air, Inert gas	
Port size	Rc(PT) 1/4, G 1/4	
Effective sectional area Smm ² (Cv)	19mm ² (1.0)	
Operating pressure	1.5~9kgf/cm ² (0.15~0.9MPa)	
Max. operating frequency	5 cycle/sec	
Response time {at 5kgf/cm ² (0.5MPa)}	≤ 30ms	
Lubrication	Not required (But, when lubricated Turbine oil ISO VG32 or equivalent)	
Manual override	Manual button (Standard), Lock	
Power consumption	DC	2.8W
	AC	4.5/3.6VA (50/60Hz)
Allowable voltage	±10% rated voltage	
Ambient & fluid temperature	5°C ~ 60°C	
Coil insulation	Class F	
Applicable cylinder	Ø32~Ø100	
Weight	230g	320g

GL	G	D / DUL	Z / ZUL	M
Lead wire & lamp	Lead wire	DIN coil + DIN connector (UL Approval)	DIN coil + DIN connector with lamp + Surge suppressor (UL Approval)	DIN coil + Metal DIN connector
GU	GP	DEXT4		L
Lamp with 90°plug	Lamp with 180°plug	Explosion proof Level of explosion-proof II 2G EEx mb II T4 II 2D IP65 T 130°		Lock

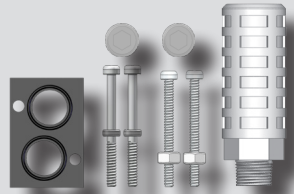
Features

- Excellent durability with its non-lubricated type.
- Minimized installing area with its small size.
- Perfect for controlling system by PLC or computer with its low consuming current type.

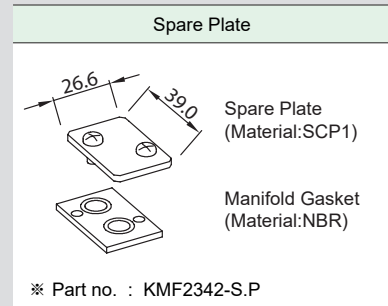
KMF2342 Manifold Block



KMF2342-4



Accessory of manifold block



How to Order

KMF2342 - 4

① ②

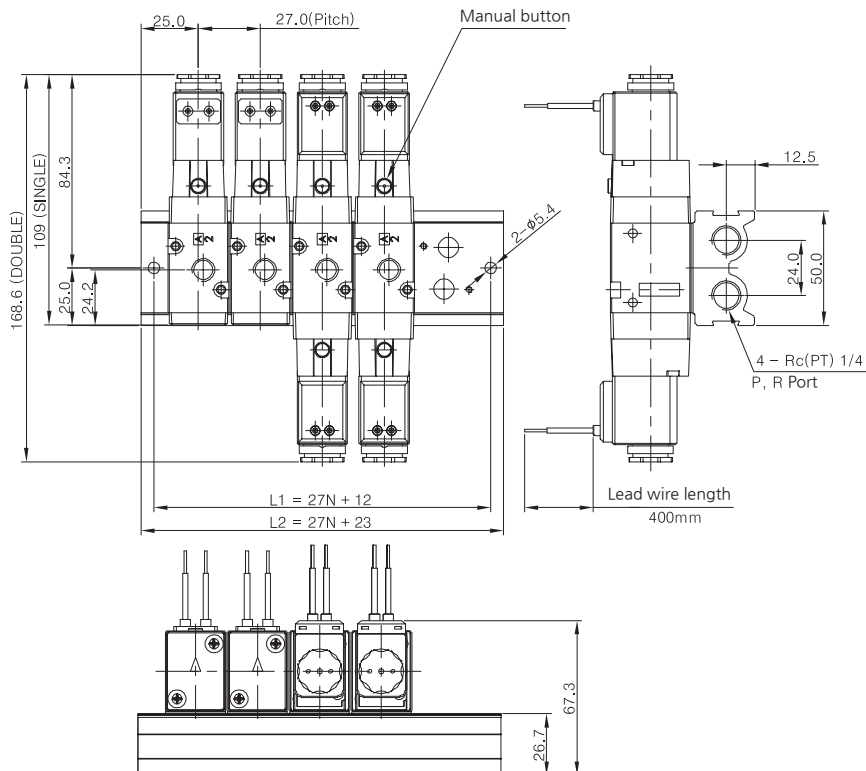
① Series

KMF2342	3 Port manifold block for KS342 series	Rc(PT) (Standard)
KMFG2342		G

② Station

2	2 Stations	5	5 Stations	8	8 Stations
3	3 Stations	6	6 Stations	9	9 Stations
4	4 Stations	7	7 Stations	10	10 Stations

Dimensions



Compatible valve						
KCC	CKD	SMC	SY	TPC	YPC	PARKER
KS342	-	VF-342	-	-	-	-

Station	2	3	4	5	6	7	8	9	10
L1	66	93	120	147	174	201	228	255	282
L2	77	104	131	158	185	212	239	266	293