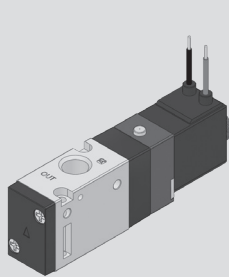
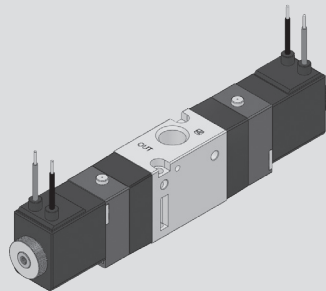


KS341 series

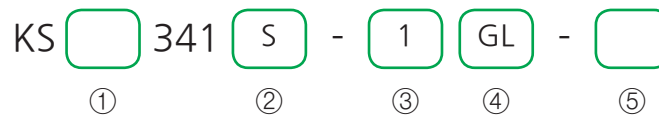


KS341S-2G



KS341D-2G

How to Order



① Port type

Nil	Rc(PT) (Standard)
G	G

② Function

Function	Symbol
S Single acting, N.C	
O Single acting, N.O	
D Double acting	

③ Voltage

1	AC 100/110V 50/60Hz
2	AC 200/220V 50/60Hz
3	DC 24V
4	DC 12V

* Custom made with AC24V, AC48V, DC48V, DC100V is available.

④ Electrical connection

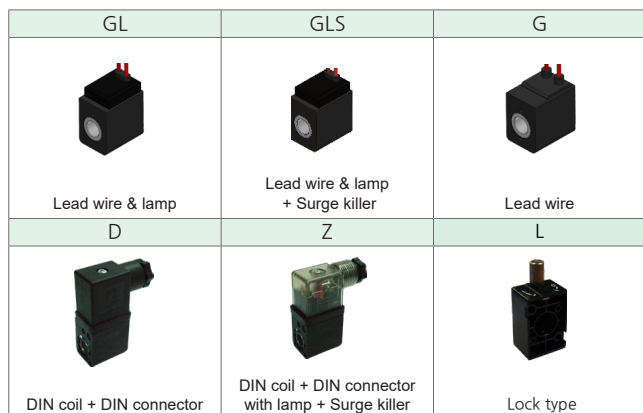
GL	Lead wire & lamp
GLS	Lead wire & lamp + Surge killer
G	Lead wire
D	DIN coil + DIN connector
Z	DIN coil + DIN connector with lamp + Surge killer

⑤ Manual override

Nil	Manual button (Standard)
L	Lock

Specifications

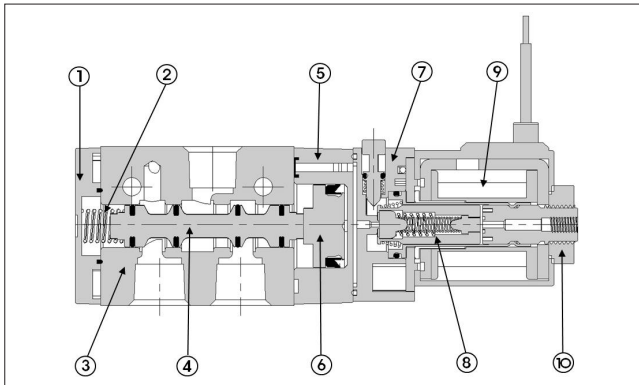
Type	S / O	D
Fluid	Air, Inert gas	
Port size	Rc(PT) 1/8, G 1/8	
Effective sectional area Smm ² (Cv)	12.6mm ² (0.6)	
Operating pressure	1.5~9kgf/cm ² (0.15~0.9MPa)	
Max. operating frequency	5 cycle/sec	
Response time {at 5kgf/cm ² (0.5MPa)}	≤ 25ms	
Lubrication	Not required (But, when lubricated Turbine oil ISO VG32 or equivalent)	
Manual override	Manual button (Standard), Lock	
Power consumption	DC	2.5W
	AC	3.5/3.0VA (50/60Hz)
Allowable voltage	±10% rated voltage	
Ambient & fluid temperature	5°C ~ 60°C	
Coil insulation	Class F	
Applicable cylinder	Ø12~Ø63	
Weight	104g	156g



Features

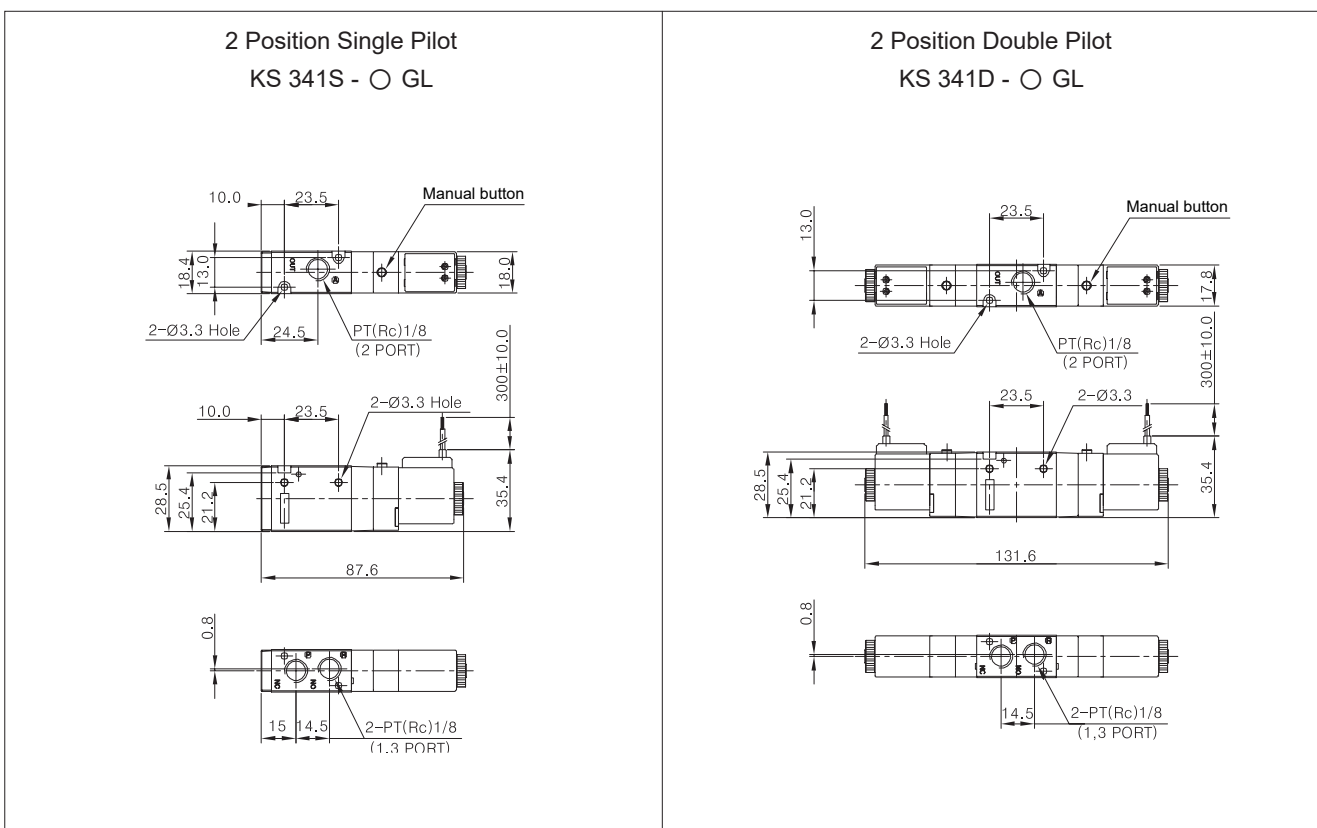
- Excellent durability with its non-lubricated type.
- Minimized installing area with its small size.
- Perfect for controlling system by PLC or computer with its low consuming current type.

Structure

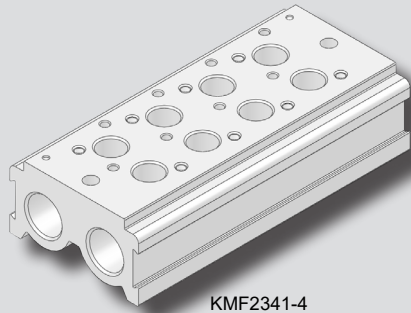


Part no.	Parts	Material
1	Cover	Metal
2	Spool Spring	SUS
3	Body	AL D/C
4	Spool Ass'y	AL & Others
5	Pilot	Plastic Resin
6	Piston	Plastic Resin
7	Seat	Plastic Resin
8	Plunger	Stainless Steel
9	Coil Ass'y	CU & Others
10	Lock Nut	Metal

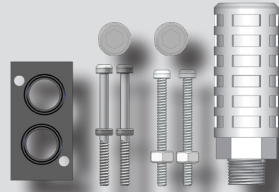
Dimensions



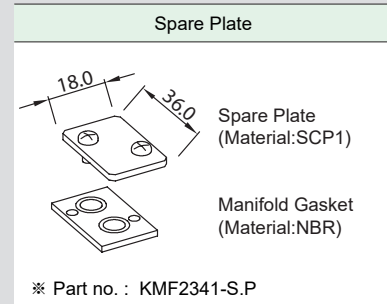
KMF2341 Manifold Block



KMF2341-4



Accessory of manifold block



How to Order

KMF2341 - 4

①

②

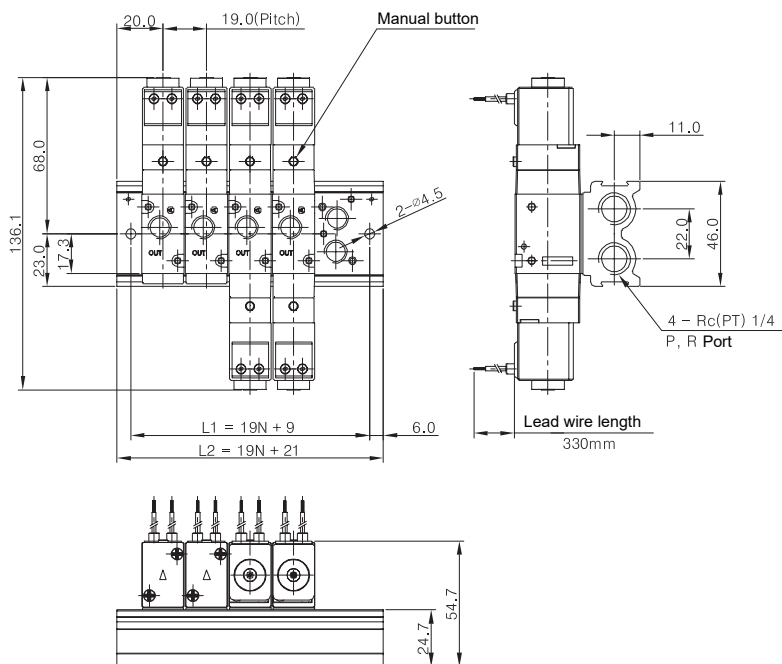
① Series

KMF2341	3 Port manifold block for KS2341 series	Rc(PT) (Standard)
KMFG2341		G

② Station

2	2 Stations	5	5 Stations	8	8 Stations
3	3 Stations	6	6 Stations	9	9 Stations
4	4 Stations	7	7 Stations	10	10 Stations

Dimensions



Station	2	3	4	5	6	7	8	9	10
L1	47	66	85	104	123	142	161	180	199
L2	59	78	97	116	135	154	173	192	211