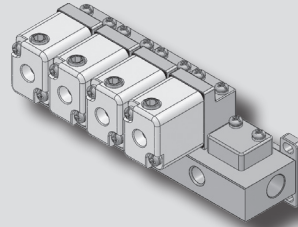
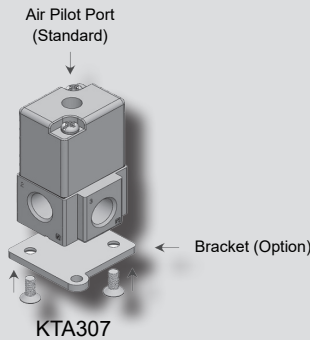
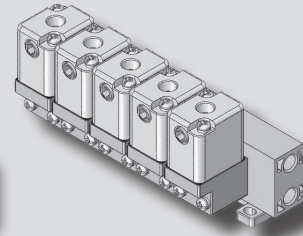


KTA307 series



Individual Exhaustion



Common Exhaustion

How to Order

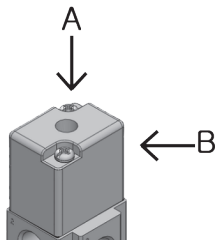


① Type

T	Direct attach type
O	Manifold block attached type

② Air supply direction

A	Vertical
B	Horizontal



* B port can be accessed if the plug in B port is inserted into A port.

③ Port type

Nil	Rc(PT) (Standard)
G	G

④ Function

Function		Symbol	Function		Symbol
Nil	Air		V	Vacuum + Air 1Port - Vacuum 3Port - Air	
	Vacuum	N.C		1Port - Air 3Port - Vacuum	
N.O				Air + Vacuum 1Port - Air 3Port - Vacuum	

⑤ Port size

01	1/8
02	1/4

⑦ Number of valves on manifold block

02	2 pcs
03	3 pcs
~	~
19	19 pcs
20	20 pcs

⑥ Option

Nil	Without mounting bracket
B	With mounting bracket

⑧ Exhaust port

2	Common exhaust port
3	Individual exhaust port

Specifications

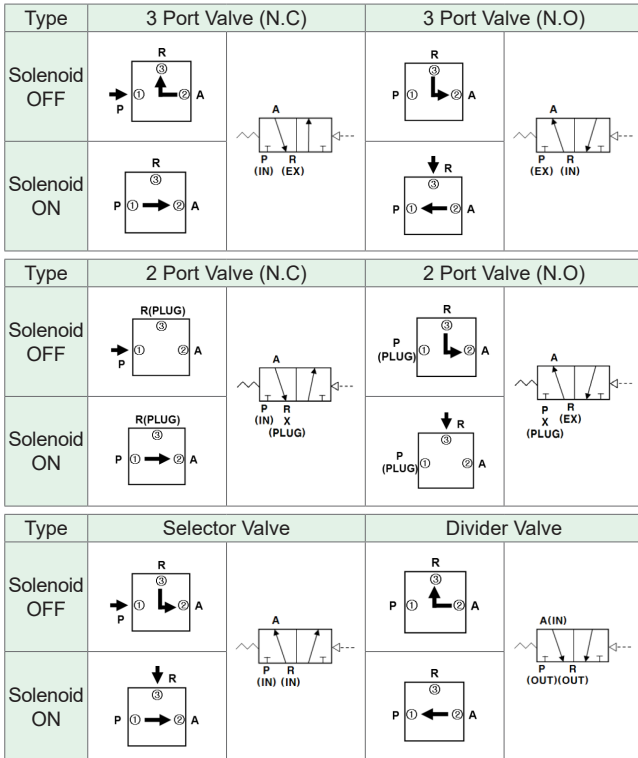
Type	Air	Vacuum
Fluid	Air, Vacuum, Inert gas	
Port size	Rc(PT) 1/8, 1/4, G 1/8, 1/4	
Effective sectional area Smm ² (Cv)	3.2mm ² (0.18)	
Operating pressure	0~10kgf/cm ² (0~1MPa)	10~760Torr (1~100kPa abs.)
Pilot pressure	2~10kgf/cm ² (0.2~1MPa)	
Pilot port size	1/8	
Lubrication	Not required (But, when lubricated Turbine oil ISO VG32 or equivalent)	
Ambient temperature	-10℃ ~ 50℃	
Fluid temperature	5℃ ~ 80℃	
Weight	140g	

Features

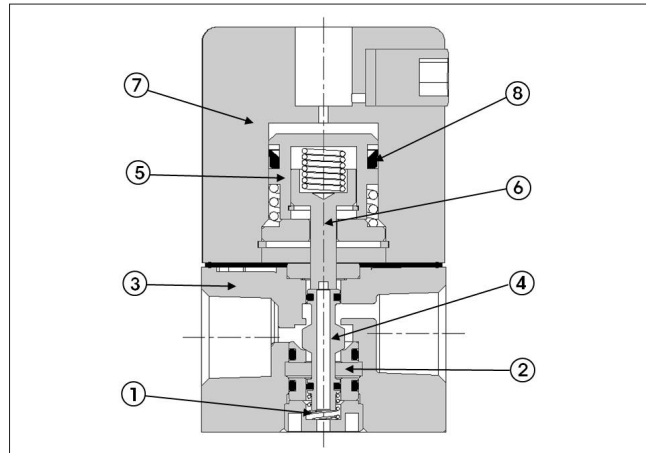
- A single valve with 6 valve functions. (Universal porting type)
- With the structure of a valve preventing fixation and resistant to dust, it operates perfectly.
- Possible to use in vacuum.

Air Operated Valve(3 Port Poppet/Universal Port)

Applications

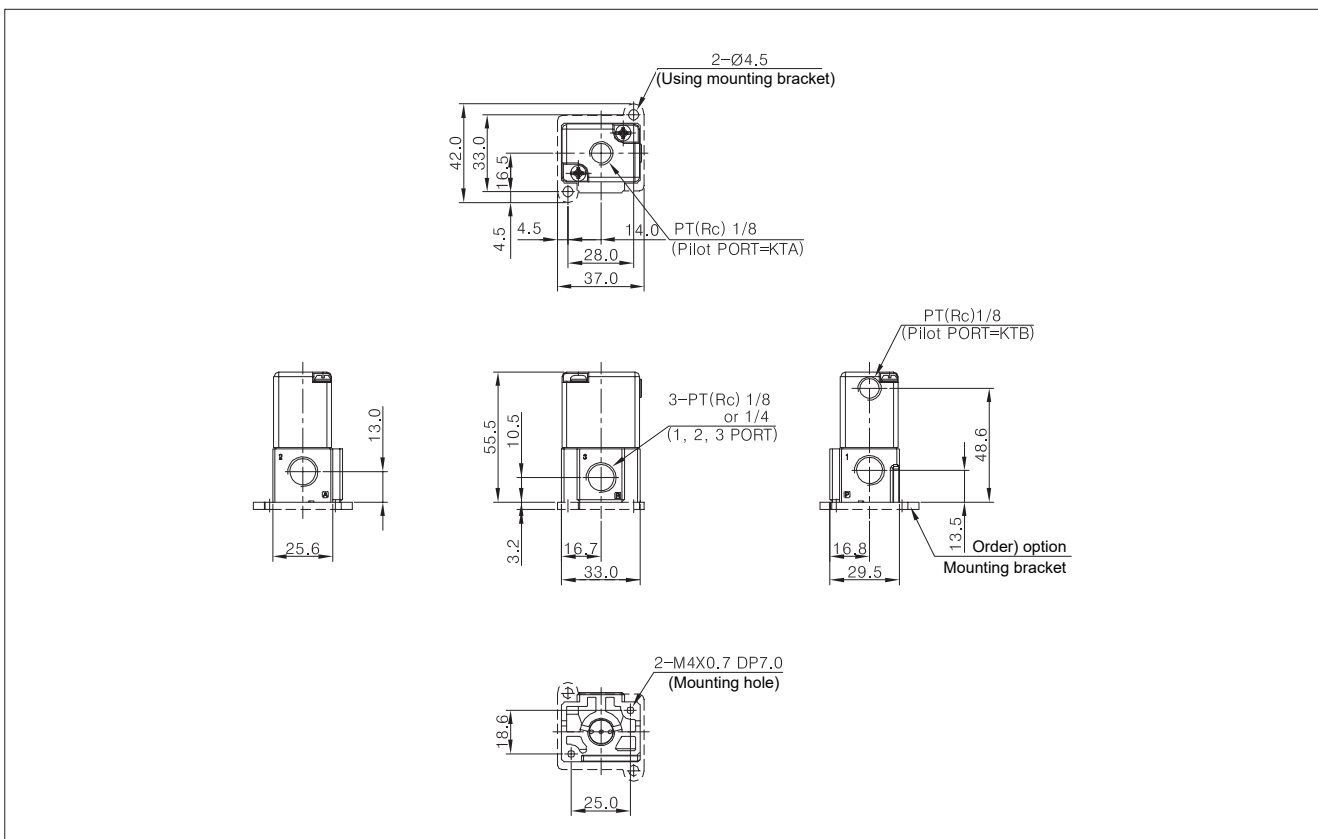


Structure



Part no.	Parts	Material
1	Spool Spring	SUS
2	Seat	Metal
3	Body	AL D/C
4	Spool Ass'y	AL & Others
5	Piston	Metal
6	Piston Rod	Metal
7	Housing	Metal
8	Piston Packing	Metal

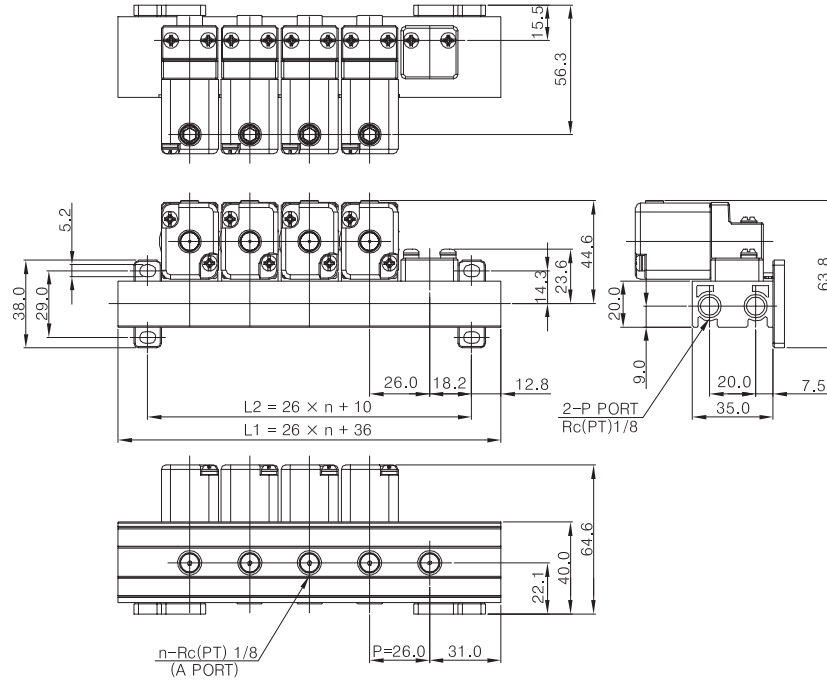
Dimensions



Dimensions

Common Exhaust Port

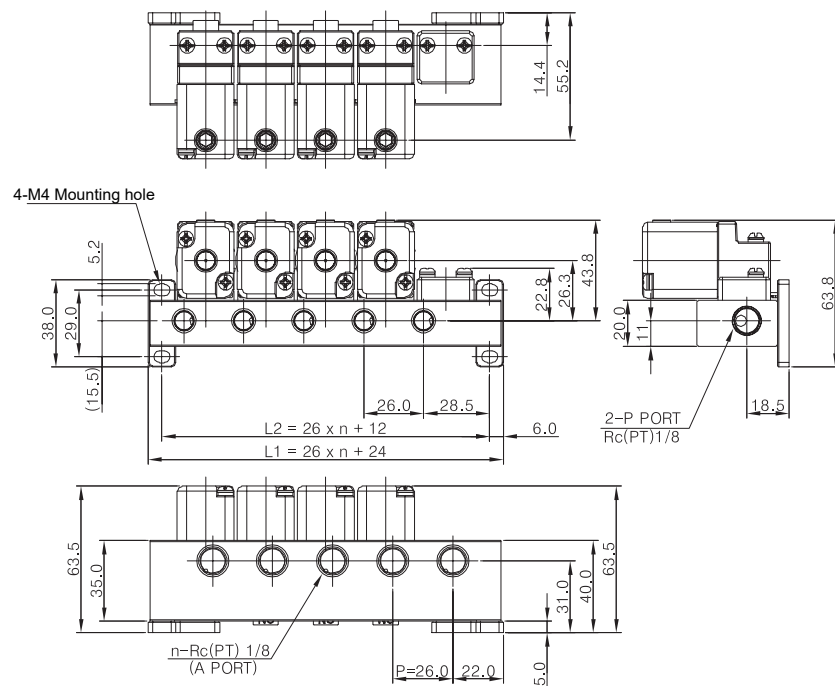
KTA307-○○-052



Station	2	3	4	5	6	7	...	19	20
L1	88	114	140	166	192	218	...	530	556
L2	62	88	114	140	166	192	...	504	530

Individual Exhaust Port

KTA307-○○-053



Station	2	3	4	5	6	7	...	19	20
L1	76	102	128	154	180	206	...	518	544
L2	64	90	116	142	168	194	...	506	532