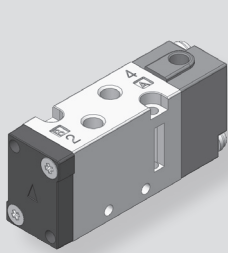
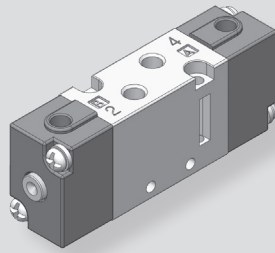


KA(B)V105 series



KBV105S



KBV105D

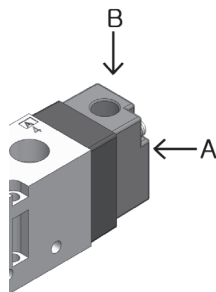
How to Order

K **B** V 105 **S**

① ②

① Air supply direction

B	Vertical (Standard)
A	Horizontal



② Function

Function		Symbol
S	Single acting	
D	Double acting	

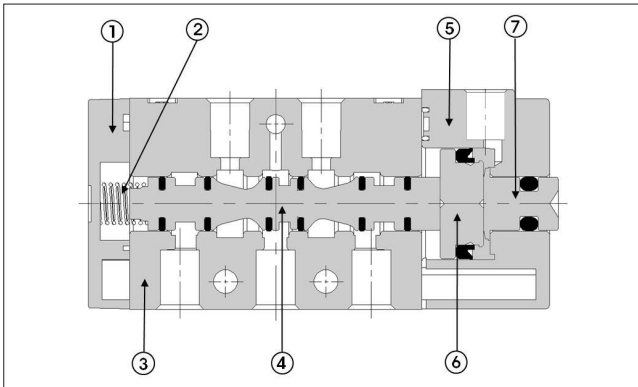
Specifications

Type	S	D
Fluid	Air, Inert gas	
Port size	M5	
External pilot port size	M5	
Effective sectional area Smm ² (Cv)	3.6mm ² (0.2)	
Operating pressure	1.5~9kgf/cm ² (0.15~0.9MPa)	
Pilot pressure	2~10kgf/cm ² (0.2~1MPa)	
Max. operating frequency	5 cycle/sec	
Ambient & fluid temperature	5℃ ~ 60℃	
Weight	54g	68g

Features

- Excellent durability with its non-lubricated type.
- Easy to mount and to maintain with its light weight and small size.
- Fast response with its low pressure pilot.
- Easy to install when horizontal type(KAV) or vertical type(KBV) is selected according to installation direction.

Structure



Part no.	Parts	Material
1	Cover	Metal
2	Spool Spring	SUS
3	Body	AL D/C
4	Spool Ass'y	AL & Others
5	Adapter Plate	Metal
6	Piston	Plastic Resin
7	Button	Metal

Dimensions

