



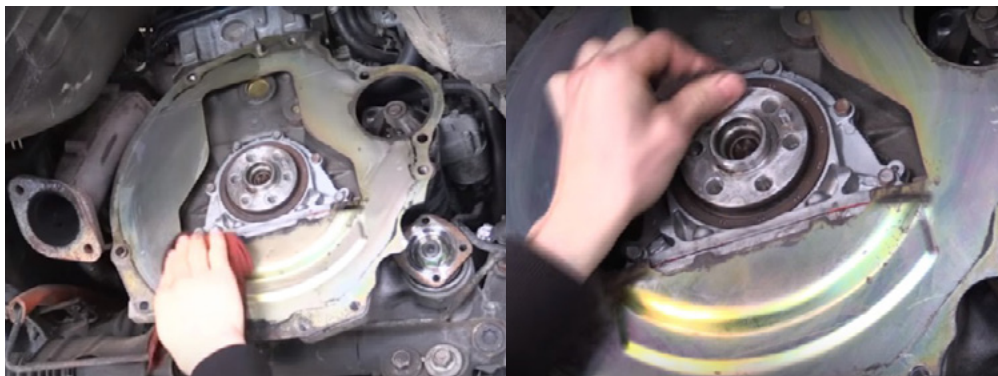
CLUTCHTECH



TSB-226

240mm Single Plate Clutch Installation Guide

1. Clean the back of the engine of any old clutch dust or oil that could contaminate the clutch. Also clean the crank mounting surface with emery paper to remove any corrosion or burrs.



2. Carefully unbox the components with clean hands and put in a clean area.
3. Clean the new flywheel front and back of any anti-corrosion oil before checking the fitment on the crank.



4. Use thread locking compound on the flywheel bolts and torque to manufacturers specifications
5. Apply a small amount of spline grease to the spline on the friction disc and slide it onto the input shaft several times, rotating it in between, to ensure even coverage of the grease. Wipe the excess build up off of the edge of the hub.
6. Install the friction disc onto the flywheel in the orientation shown below

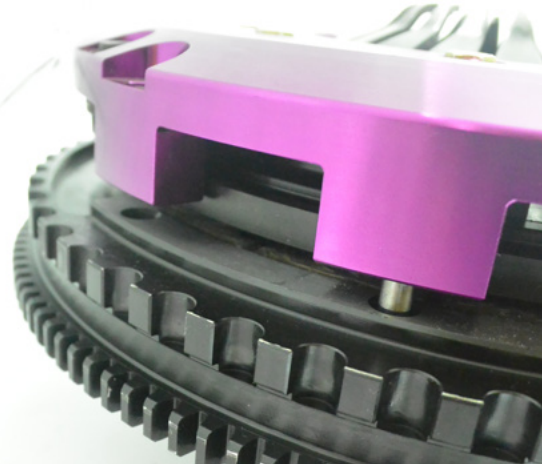
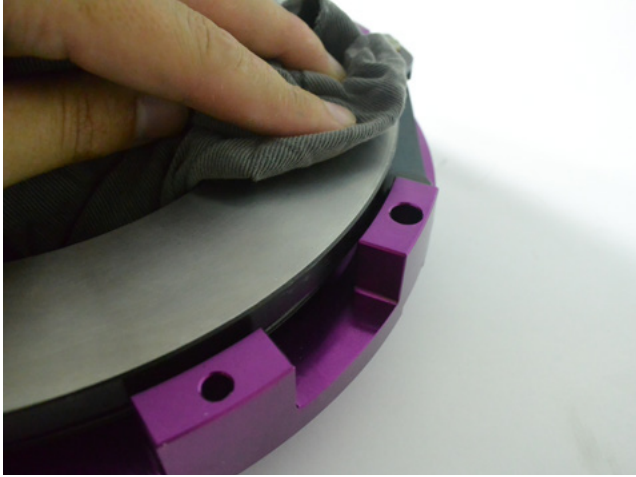


7. Use the alignment tool to align the friction disc to the pilot bearing.





8. Clean the friction surface on the pressure plate and mount it to the flywheel ensuring the dowels are locating the appropriate holes.
9. Leaving the alignment tool in, loosely start the threads of the six M8 pressure plate bolts and tighten by hand.



10. Tighten the bolts $\frac{1}{4}$ turn at a time in a circular motion. After every rotation remove and re-fit the alignment tool to check the disc is aligned to the pilot bearing.



11. When the six M8 bolts have pulled the pressure plate up to the flywheel, torque all 6 bolts to 26 ft. Lbs/ 35 N.m.



LEADING BRANDS

CLUTCHPRO CLUTCHPRO
COMMERCIAL



australianclutch.com.au

1800 CLUTCH (258824)