

SOUTH – KOLOKOTRONI 4, GLYFADA

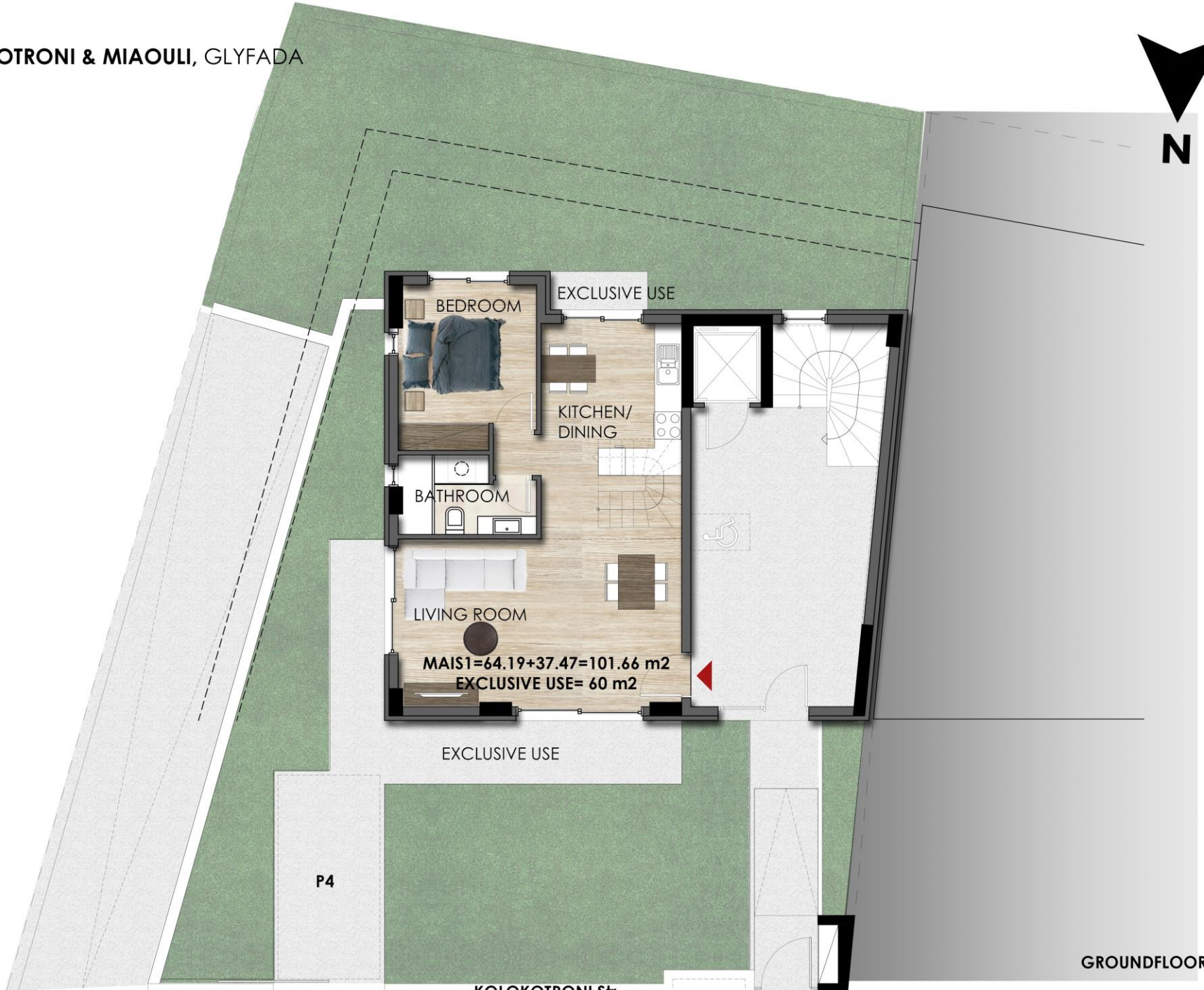


SOUTH – KOLOKOTRONI 4, GLYFADA

APT	SQM	BALCONIES (SQM)	FLOOR	BR	PARKING	S/R	PRICE €
MAIS 1	64,19 + 37,47 = 101,66	60 EXC. USE	GROUND & 1	2	YES	YES	457000
A1	82,53	37	1	2	YES	YES	390000
B1	82,53	37	2	2	YES	YES	420000
C1	82,53	37	3	2	YES	YES	440000

- **Energy rating: A+**





MAIS1=64.19+37.47=101.66 m2
EXCLUSIVE USE= 60 m2

EXCLUSIVE USE

EXCLUSIVE USE

BEDROOM

KITCHEN/
DINING

BATHROOM

LIVING ROOM

P4

KOLOKOTRONI Str

GROUND FLOOR



KOLOKOTRONI & MIAOULI, GLYFADA

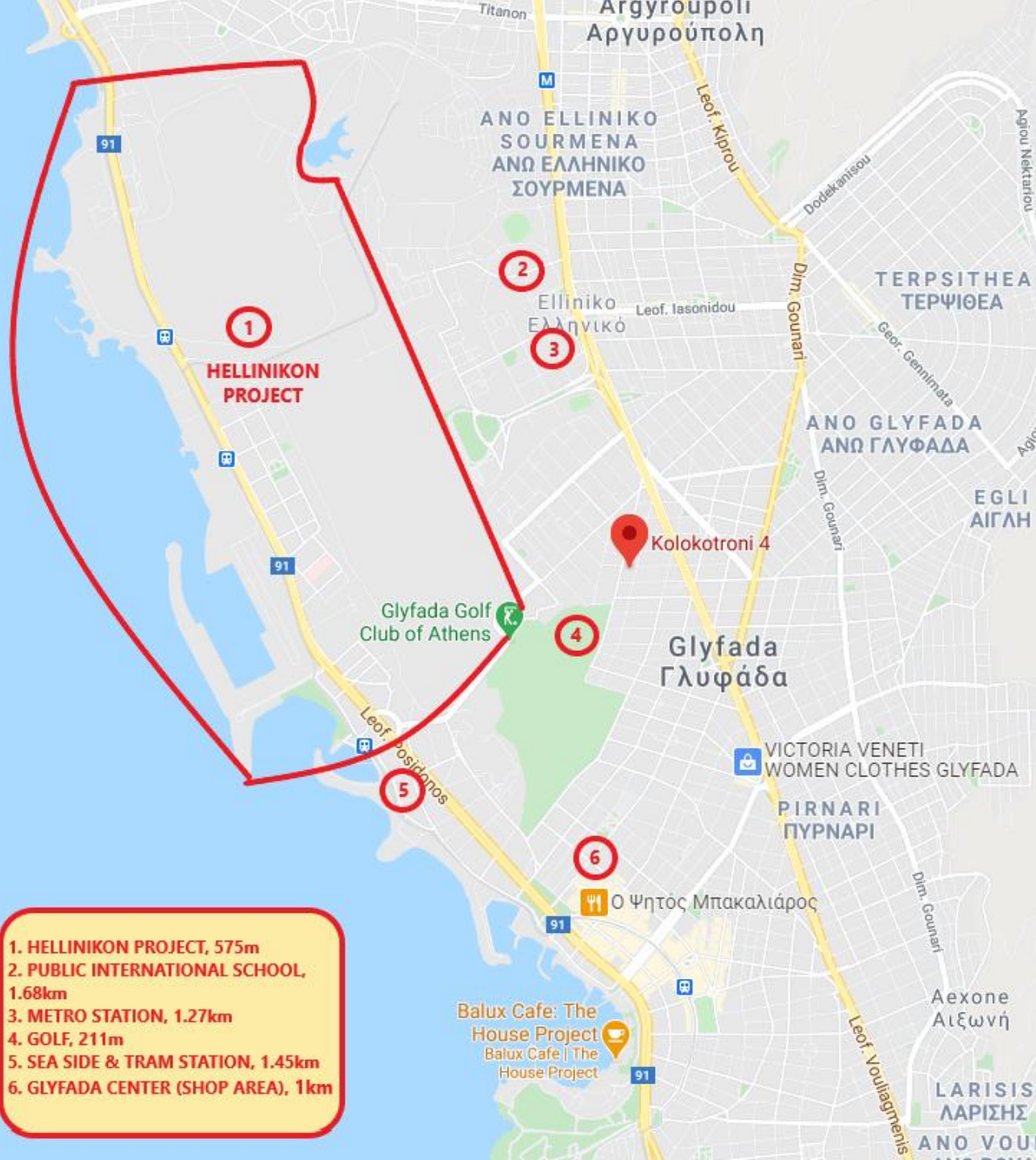


KOLOKOTRONI Str
FIRST / SECOND / THIRD FLOOR









- 1. HELLINIKON PROJECT, 575m
- 2. PUBLIC INTERNATIONAL SCHOOL, 1.68km
- 3. METRO STATION, 1.27km
- 4. GOLF, 211m
- 5. SEA SIDE & TRAM STATION, 1.45km
- 6. GLYFADA CENTER (SHOP AREA), 1km



Properties in Greece



Aegean Sea