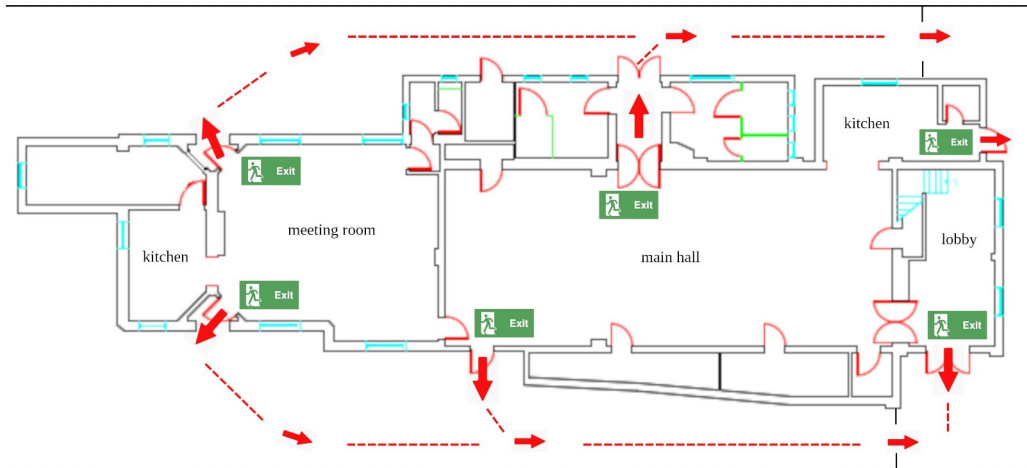




Important Notes for Hirers

1. Kitchen use: there is a hot water unit for drinks, and a kettle as well. There is also a microwave, some china and cutlery.
2. For health and safety reasons please ensure that no children are allowed into the kitchens.
3. Please use the provided soap and cloth to wash up. We don't supply tea towels anymore, they kept disappearing, so please bring your own.
4. We've had problems with wipes, paper towels etc., and the drains. Some products are labelled as 'flushable' by the manufacturer, but this is no guarantee that the item can be flushed into the drainage system without causing problems. Please don't put these items in the toilets – use the bins provided.
5. Tables and chairs are available without charge. Please make sure they're clean for the next hirer when you put them away after use.
6. Please leave the Centre as you find it – brooms are in the Main Hall cloakroom and the Meeting Room kitchen. If excessive cleaning is necessary, the hirer will be charged as per our terms.
7. For hirings of the Main Hall, please note that the lobby needs to be kept clear at all times and is not to be used as part of the room hire.
8. For any hirings after dark, please ensure that the blinds are closed so the light in the hall does not disturb the neighbours.
9. Please bag up any rubbish and put it in the large bin which is on the path on right hand side of the Centre. Please bring some spare bin bags!
10. Please be reminded that any setting up and clearing away needs to happen within your booked time; overrunning will be charged as per our terms

Escape Routes



Assembly Point: car park opposite Highover Way

Walsworth Community Association

Registered Charity Number 302485