

Pego



*Aluminium Door &
Window Hardware*

**Inspired By Design,
Powered By Quality**



*Inspired by Design,
Powered by Quality*

PEGO is one of the leading and a pioneer Door & Window Hardware Brand in India. PEGO has created niche with focus on Aluminium & uPVC Door & Window Hardware. **“Inspired by Design & Powered by Quality”** – The Organization lives by this Tagline & it is integral to the ethos of the company.

PEGO Hardware through its reach, diversity & innovations has made enormous strides in setting trends, benchmarks, redefining and creating strong niche in the Indian fenestration industry over a decade. The Company has already executed many Private, Government & Institutional Projects across the country.

PEGO has complete range of Aluminium & uPVC door & window hardware covering:

- ☑ Casement Door Hardware
- ☑ Sliding Door Hardware
- ☑ Casement Window Hardware
- ☑ Sliding Window Hardware

The USP of **PEGO** is its ability to address the need of the industry and various stakeholders with respect to hardware solutions through its range of innovative and premium products. It is for this reason company has enjoyed patronage over the years of Developers, Architects, Consultants & Door and Window Manufacturers.

PEGO with its extensive growth has managed its presence on PAN India basis through its sales team and Branch Offices cum Warehouses. The company boasts of state of the art facility with testing laboratory. At its head office, PEGO has created first of its kind Application Centre by a hardware company in fenestration Industry in India with the display of new innovative hardware products & their application. The Company has its In-House R&D Lab fully equipped to measure product cycle testing, powder coating thickness, material composition enabling it to deliver premium quality products with 10 years warranty. All products are backed up with all the requisite certifications from internal & external laboratories.

PEGO under the leadership of its founder Mr. Karan Shah – Foster the team with zeal, thrive and passion leading them to become the company to be **“Partner of Choice..!”** on a National Level.



ISO 9001:2015
CERTIFIED





Our Competitive Advantage

- ✓ **Cost effective solutions**
Price competitive when compared against our competitors.
- ✓ **Innovation**
We pride in innovating and addressing the essential need of our customers through our products. We are responsible for introducing lot of first in Indian Fenestration Industry
- ✓ **Customization**
We mould ourselves to the need of our client. Hence customization in terms of design, powder coating etc is possible.
- ✓ **Quality**
All our products undergo stringent quality control and are checked for 25,000 product test cycles as per European standards. All products are tested inhouse in our testing lab.
- ✓ **Warranty**
10 year warranty is offered on all our products from any manufacturing defects.
- ✓ **Client Servicing**
With the sales team present on PAN India supported by our regional warehouses, each client is serviced by a dedicated executive who serves as a single point of contact for all requirements.

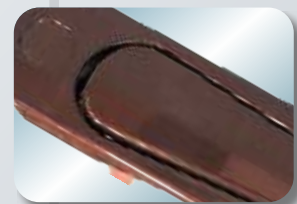
Finishes available for our featured products



White (RAL 9016)



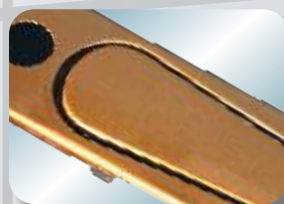
Black (RAL 9005)



Brown (RAL 8019)



Silver Finish



Golden Finish

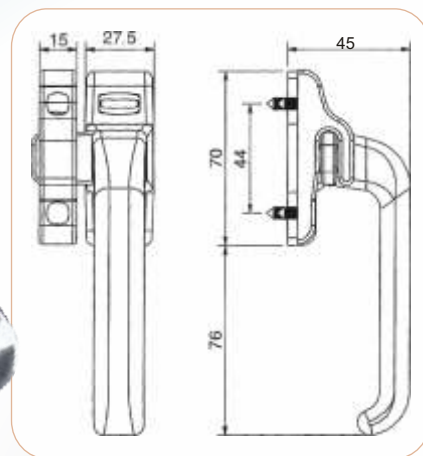


Custom

Window Handles

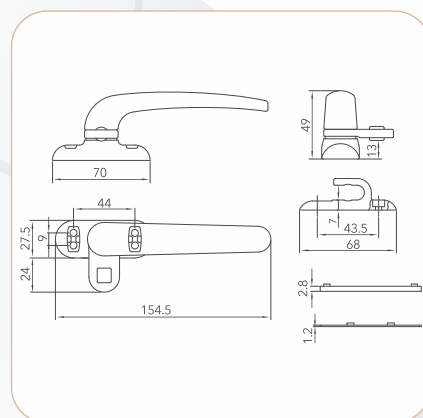
HD 03

Single Point Window Handle



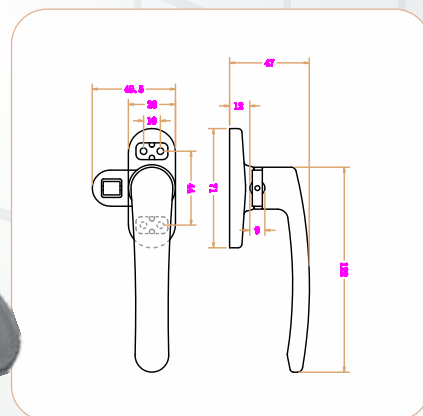
HD 06

Single Point Window Handle



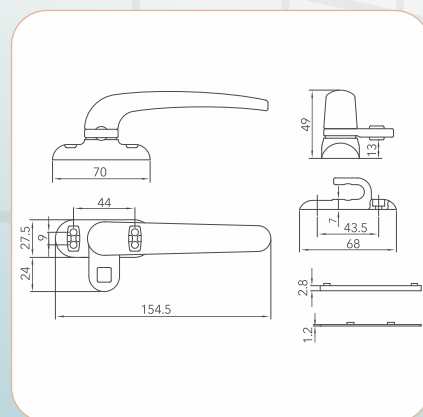
HD 08

Single Point Window Handle



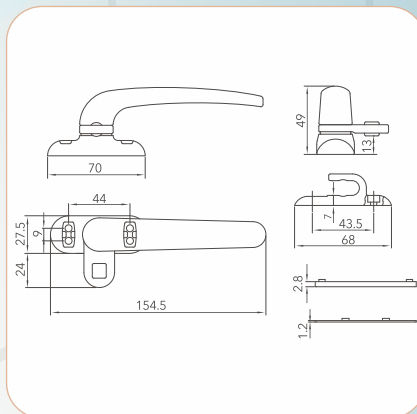
HD 10

Single Point Window Handle



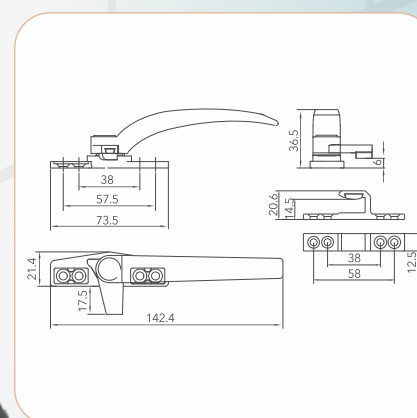
HD 02

Single Point Window Handle With Key



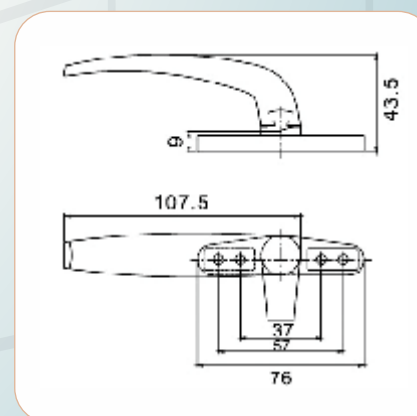
HD 05

Standard Window Handle



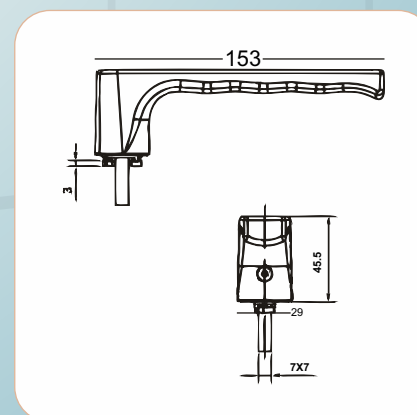
HD 09

Single Point Window Handle



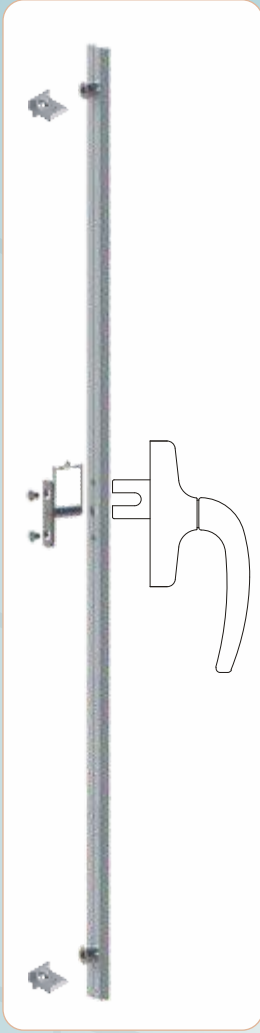
SLP 03

Baseless Window Handle



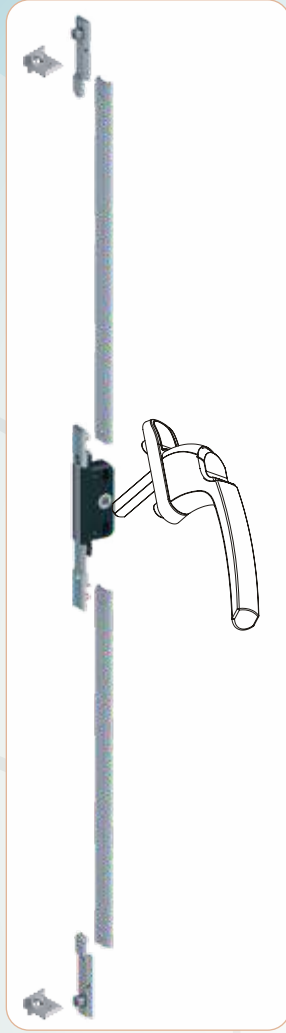
Window Handles

Casement Multi Point System



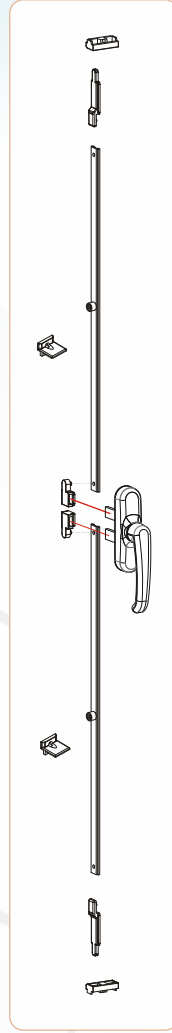
Euro Groove System 1

Single fork Handle
T Connector Used
Euro Transmission Gear



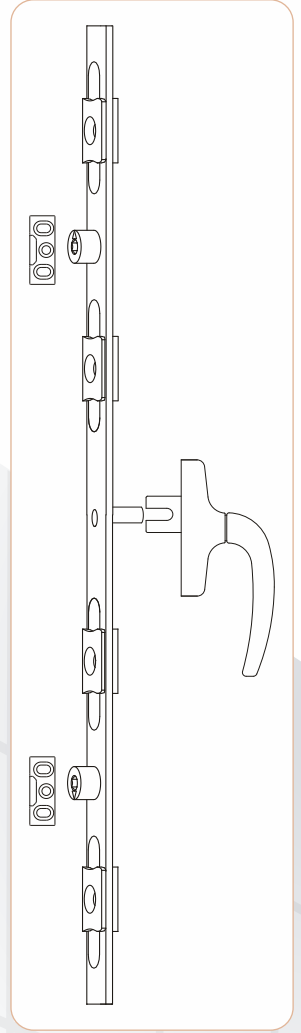
Euro Groove System 2

Spindle Based Handle
Gear box used
Euro Transmission Gear



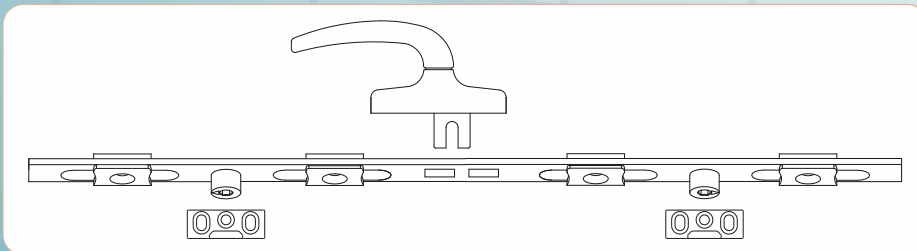
Euro Groove System 3

Double fork Handle
Handle Transmission Connector
Euro Transmission Gear



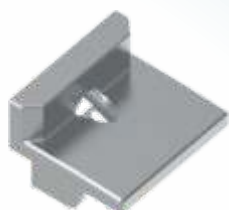
Non-Euro Groove System 4

Single fork Handle
Single Plate Transmission Gear

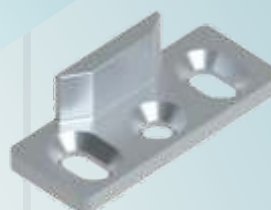


FAC-TPG
Non-Euro Groove
Top Hung System

TPS 01
Euro Striker



TPS 02
Gear Striker



TPS 03
Gear Striker



TPFE
Fork Extension



HD 61
Rollon Sash
Lifter



HD 62
Nylon Sash
Lifter



TPT
T Joint



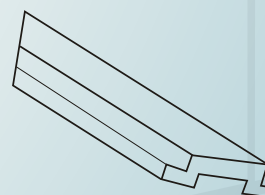
TPT 02
Euro T Connector



TPT 03
Single fork
Connector



PLS
Polymide Strip



TPLP
Locking Point



TPLP 02
Euro Locking Pin



LS 01
Locking System



TPS 04
Gear Striker

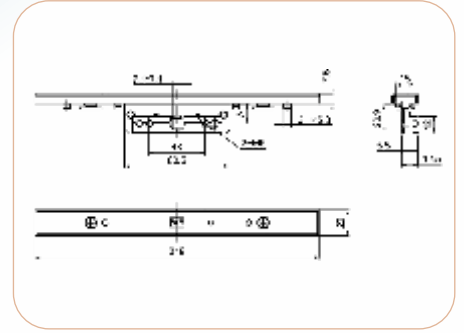


Casement Strikers

Transmission Gears

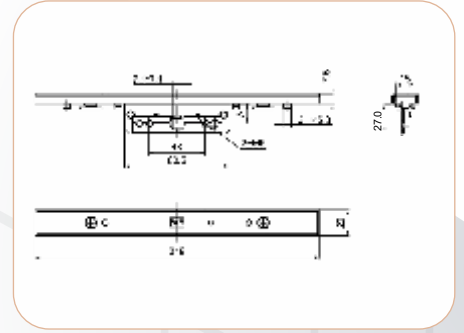
GB 08

Gear Box
(8 mm bacset)



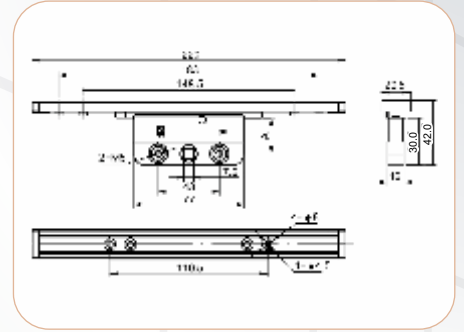
GB 15

Gear Box
(15 mm bacset)



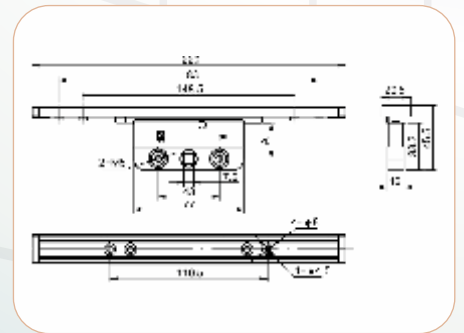
GB 20

Gear Box
(20 mm bacset)



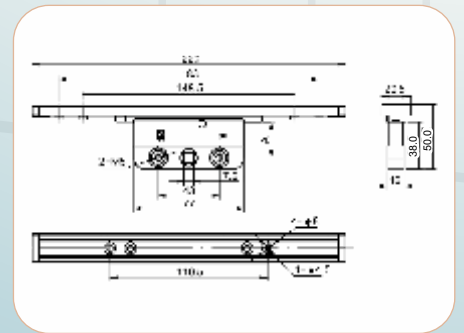
GB 25

Gear Box
(25 mm bacset)



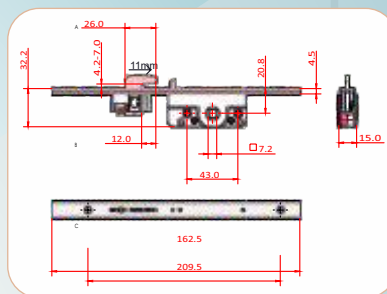
GB 30

Gear Box
(30 mm bacset)



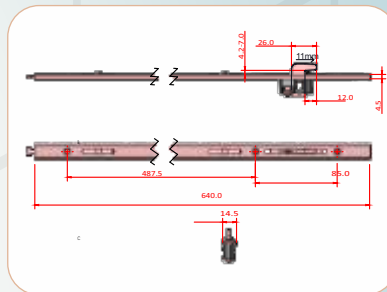
UBGB

U Bend Gear Box
(20 mm bacset)



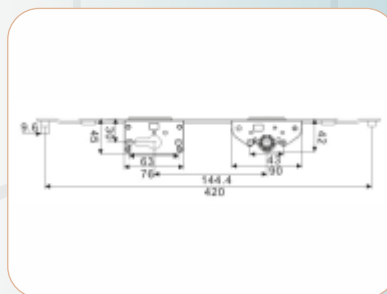
UBEXT

U Bend Extension Gear
(Top/Bottom)



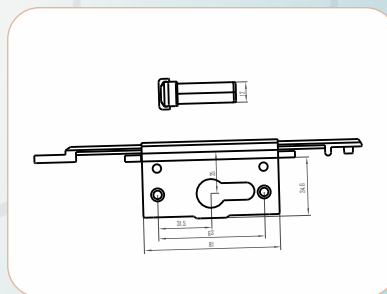
GB-CY-30

Integrated Cylindrical
Gear Box

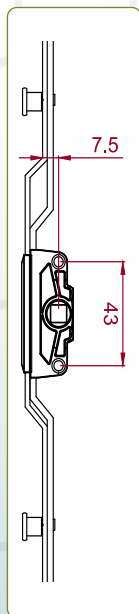


GB-CY-25

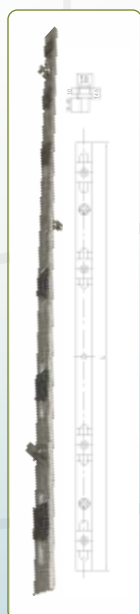
Integrated Cylindrical
Gear Box



Transmission Gears



SWG
Sliding
window
espagne



SLID-TPG
Sliding
Non Euro
Gear



CAS-TPG
Casement
Non Euro
Gear



EUR-TPG
Casement
Euro Gear



EUR-EXT
Casement
Euro Extension
Gear

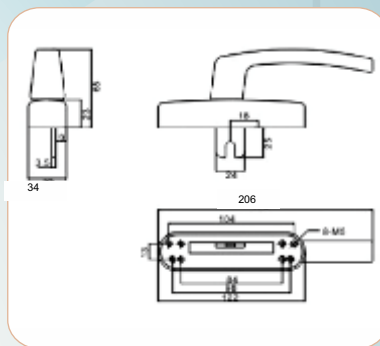


FAC-TPG
Top Hung
Non Euro
Gear

Transmission Gears

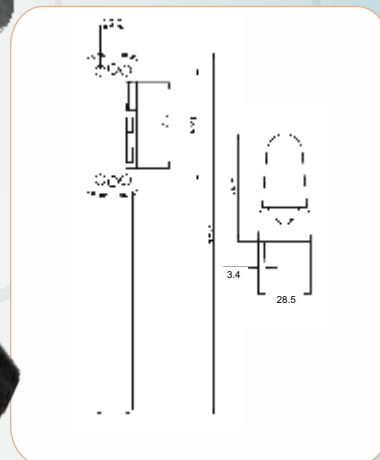
HD 15

Cremone Handle
(Single Fork)



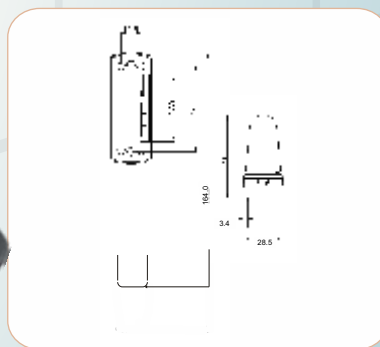
SL 45F

Cremone Handle
(Single Fork)



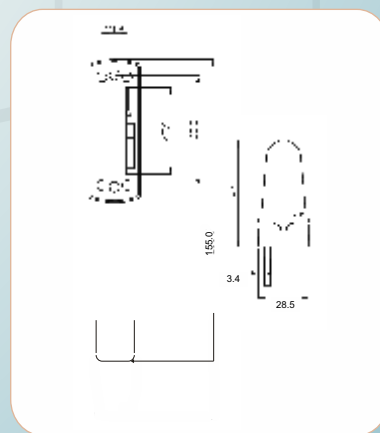
SL 54F

Cremone Handle
(Single Fork)



HD 17

Cremone Handle
(Single Fork)

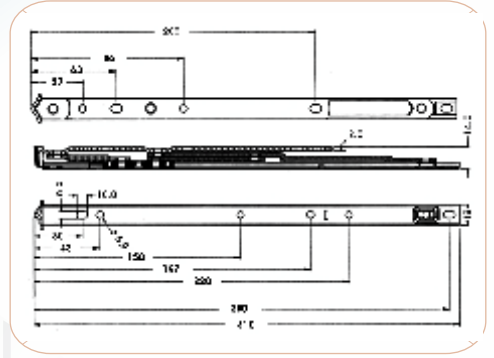


HD16

Panic Bar Parallel
Window Handle
(Single Fork)



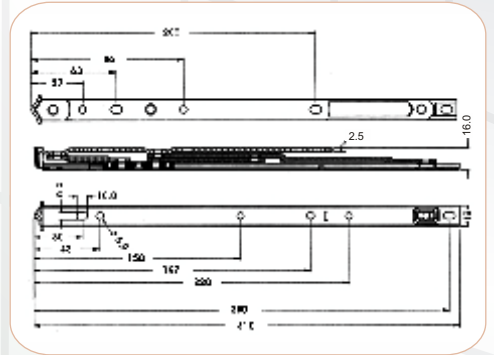
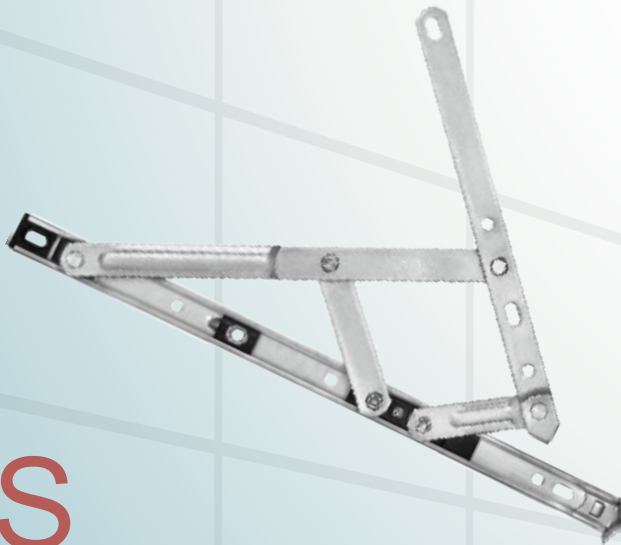
Cremone Handles (Premium)



FS

Stainless Steel Friction Stay (Bar Thickness: 2mm)

Product Code	Hinge Size (in/mm)	Stack Height (mm)	Side Hung		Top Hung		Load Capacity (kgs)	Opening Angle (+/- 2.5°)
			Max shutter width (mm)	Max shutter height (mm)	Max shutter width (mm)	Max shutter height (mm)		
FS 08 A	08/205	13.5	450	900	900	450	8	87.5
FS 10 A	10/255	13.5	500	850	850	500	10	87.5
FS 12 A	12/310	13.5	550	1200	1200	550	12	87.5
FS 14 A	14/355	13.5	650	1200	1200	650	15	87.5
FS 16 A	16/405	13.5	650	1350	1350	650	17	87.5

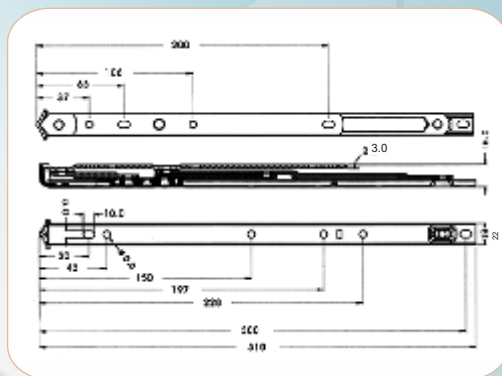


FS

Stainless Steel Friction Stay (Bar Thickness: 2.5mm)

Product Code	Hinge Size (in/mm)	Stack Height (mm)	Side Hung		Top Hung		Load Capacity (kgs)	Opening Angle (+/- 2.5°)
			Max shutter width (mm)	Max shutter height (mm)	Max shutter width (mm)	Max shutter height (mm)		
FS 10 B	10/255	16	500	1100	1100	500	12	87.5
FS 12 B	12/310	16	575	1200	1200	575	16	87.5
FS 14 B	14/355	16	650	1350	1350	650	19	87.5
FS 16 B	16/405	16	700	1500	1500	700	21	87.5
FS 18 B	18/455	16	750	1600	1600	750	23	87.5

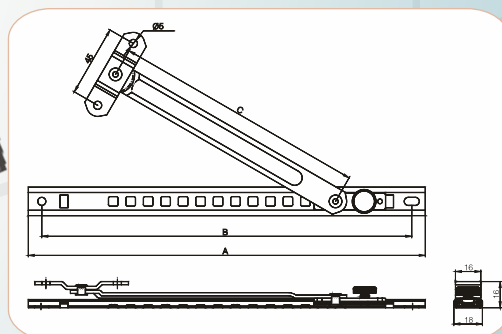
Stainless Steel Friction Stay (Heavy Duty)



Product Code	Hinge Size (in/mm)	Stack Height (mm)	Side Hung		Top Hung		Load Capacity (kgs)	Opening Angle (+/- 2.5°)
			Max shutter width (mm)	Max shutter height (mm)	Max shutter width (mm)	Max shutter height (mm)		
FS 10 C	10/255	16	600	1200	1200	600	22	87.5
FS 12 C	12/310	16	650	1300	1300	650	30	87.5
FS 14 C	14/355	16	700	1400	1400	700	34	87.5
FS 16 C	16/405	16	750	1500	1500	750	40	87.5
FS 20 C	20/505	16	NA	NA	1500	1500	80	30
FS 24 C	24/555	16	NA	NA	1500	1700	100	30

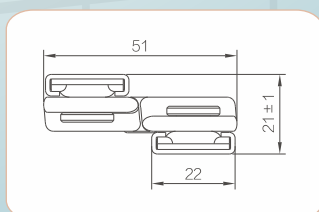
RA

Stainless Steel Restrictor Arm (Sizes 10" & 12")



PS

Stainless Steel Parallel Stay



APPLICATION

- Used for parallel opening of windows
- Available in 18" & 24"
- Ideally suitable for facade, hospitals and schools
- Provides opening with security

COMPOSITION

- SS304 grade

Stays (Euro Groove)

CS 02

Concealed Stay
(Euro Groove)
Weight Capacity : 80 kgs



EFS

Euro Groove
Heavy duty stay
(Sizes: 12" & 14")



EUR-CH-FS

Euro Groove
Friction stay
(Sizes 12" to 16")



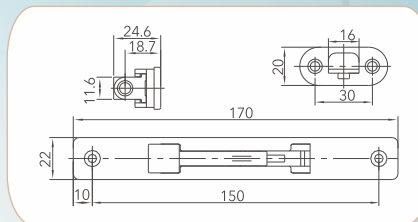
ERA

Euro Groove Arm stay
(Sizes 10" & 12")



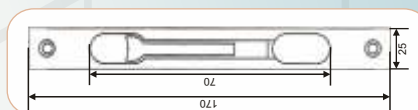
TB 10B

Concealed Tower Bolt



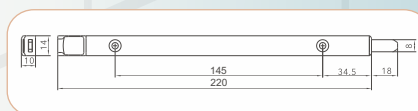
TB 10

Concealed Tower Bolt



TB 24

Concealed Tower Bolt
Sizes: 250/450mm



TB 25

Multi locking
Shoot Bolt
(For french door)



TL 01

Toilet Louvers

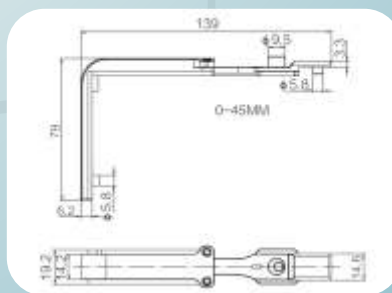
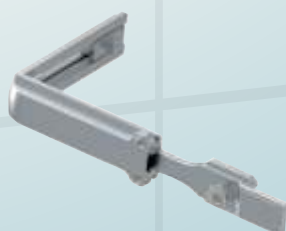


HD 23

Pull Handle

CD 01

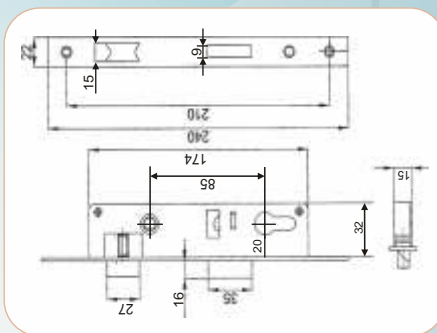
Corner Drive



Casement Accessories

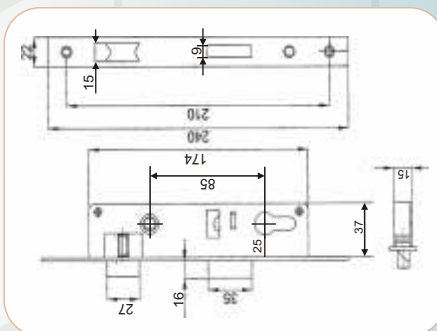
LK 01-20

Mortice Lock
(85x20 mm)



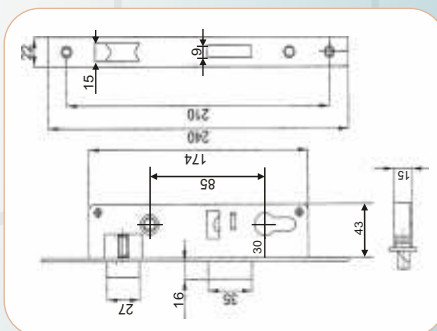
LK 01-25

Mortice Lock
(85x25 mm)



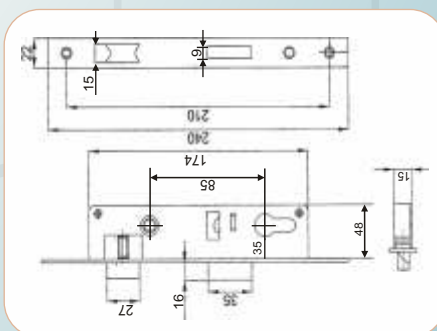
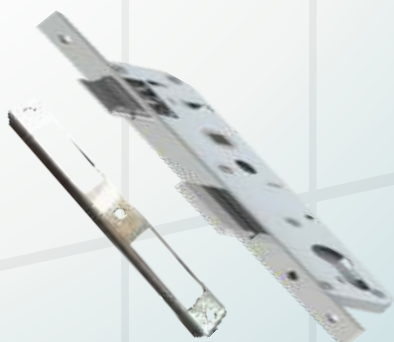
LK 04

Mortice Lock
(85x30 mm)



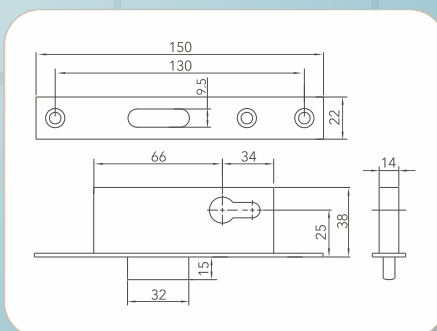
LK 05

Mortice Lock
(85x35 mm)



LK 02

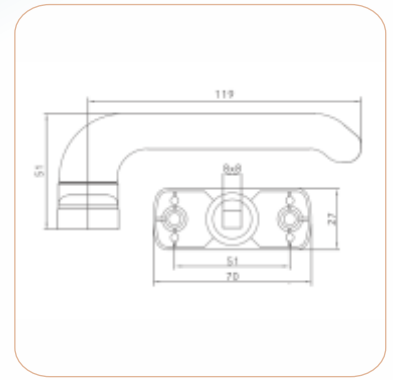
Cylindrical
Deadlock 38mm



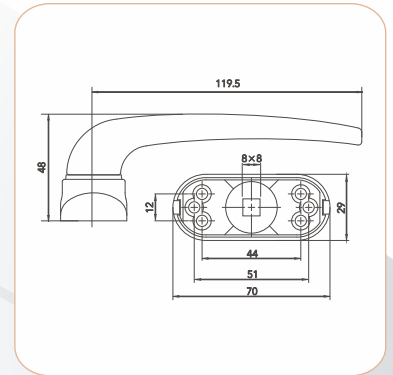
Door Locks

Door Handles

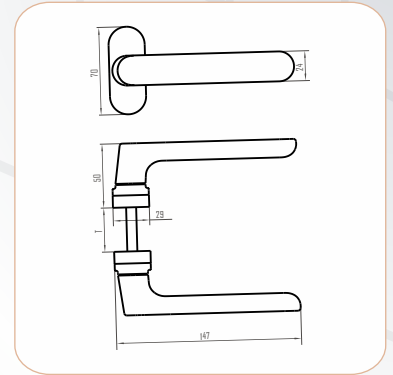
HD 21
Mortice Handle



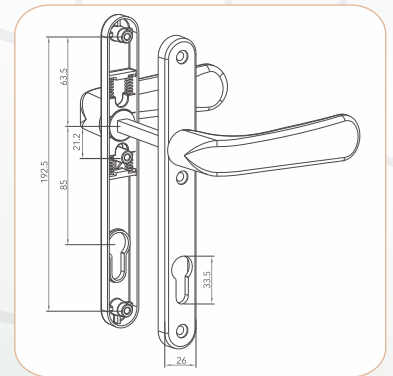
HD 25
Mortice Handle



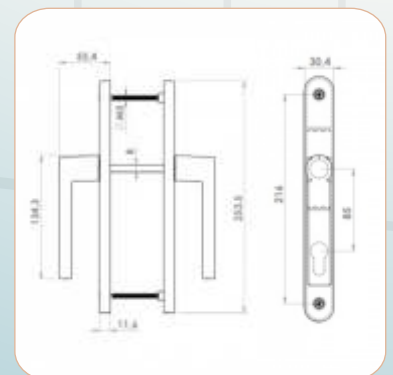
HD 27
Mortice Handle



HD 22P
Mortice Handle

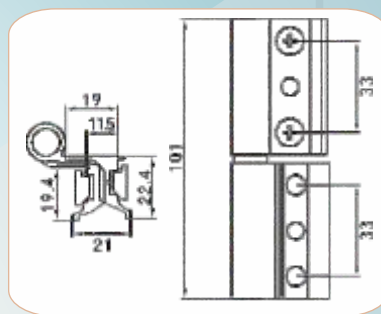


HD 29
Mortice Handle



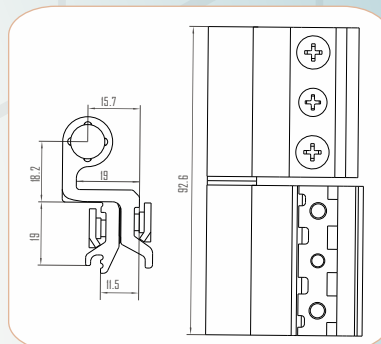
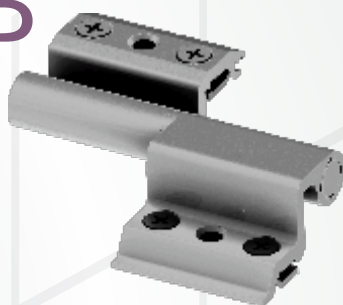
BH 01

Euro Hinge
(Weight Capacity: 60kgs)



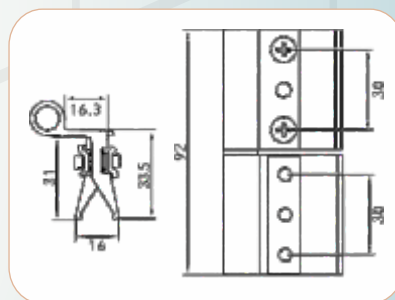
BH 01-ALP

Euro Hinge
(Weight Capacity: 60kgs)



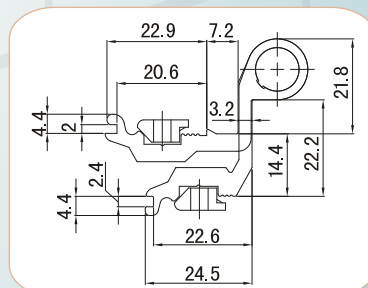
BH 02

Euro Hinge
(40mm Series)
(Weight Capacity: 60kgs)



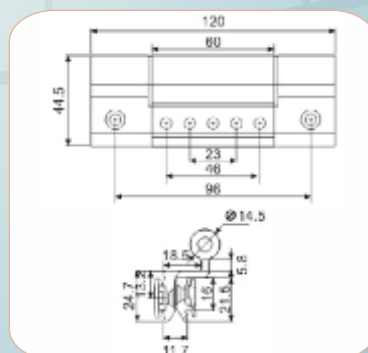
BH 05

Euro Hinge
(52mm Series)
(Weight Capacity: 60kgs)



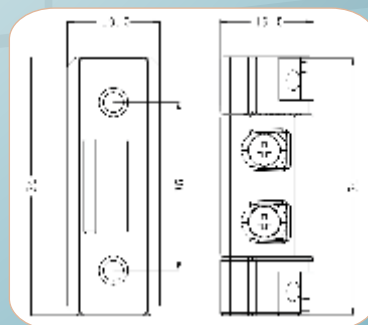
BH 08

Euro Hinge
(Weight Capacity: 100kgs)



BH 07

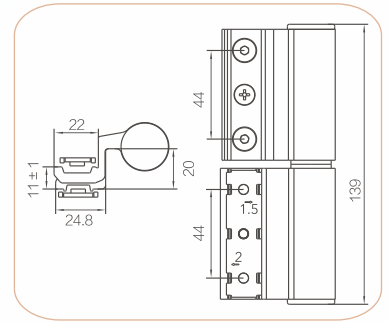
Center support Hinge



Hinges

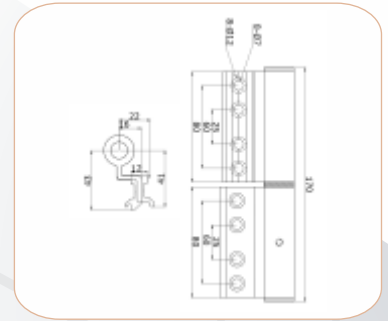
BH 06

Euro Door Hinge
(Weight Capacity: 150kgs)



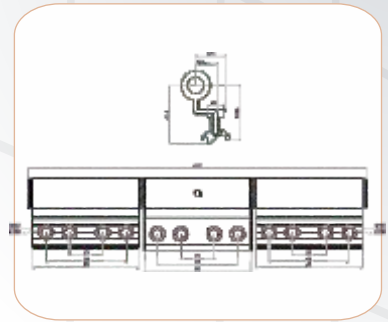
BH 09

Heavy Duty Euro Hinge
(Weight Capacity: 200kgs)



BH 10

Heavy Duty 3 Leaf Euro Hinge
(Weight Capacity: 250kgs)

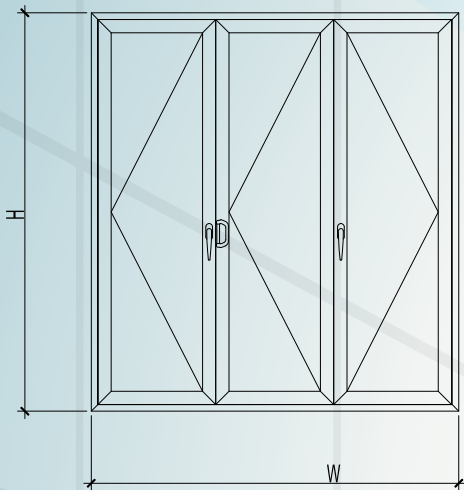


Tilt & Turn System

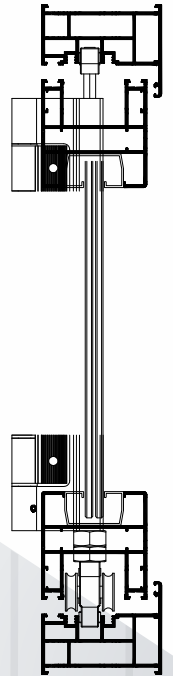
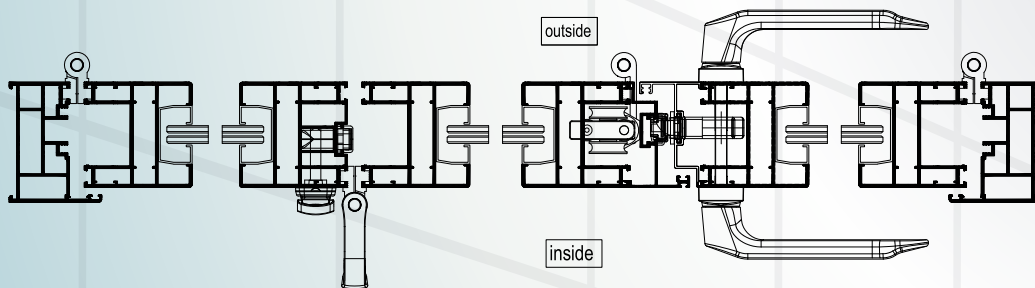


Sliding Folding System

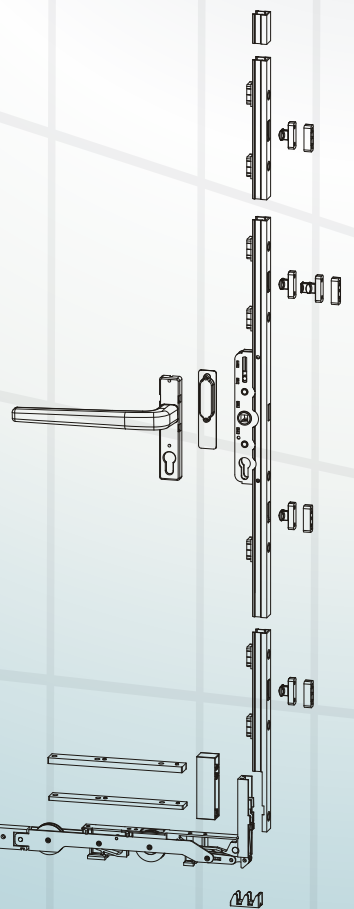
Sliding Systems



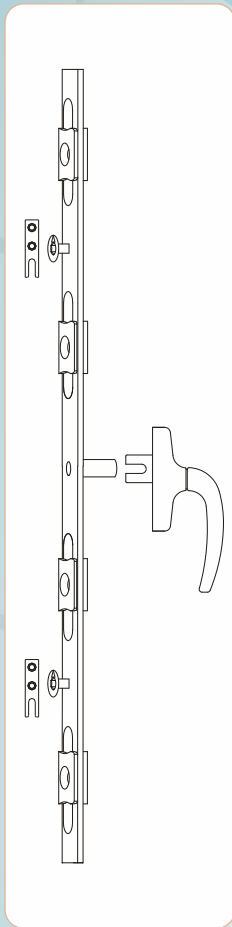
- Bottom Roller System
- Maximum sash height: 3000mm
- Maximum sash weight: 80kgs
- Low threshold option available
- Single & double glass option available



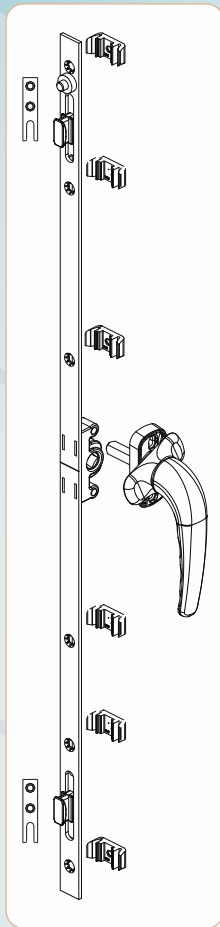
Lift & Slide System



Sliding Multipoint System



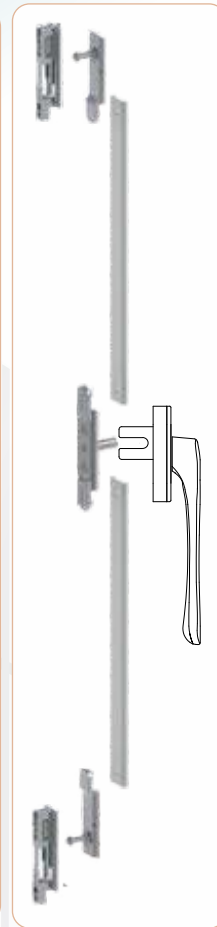
Non-Euro Groove System 1



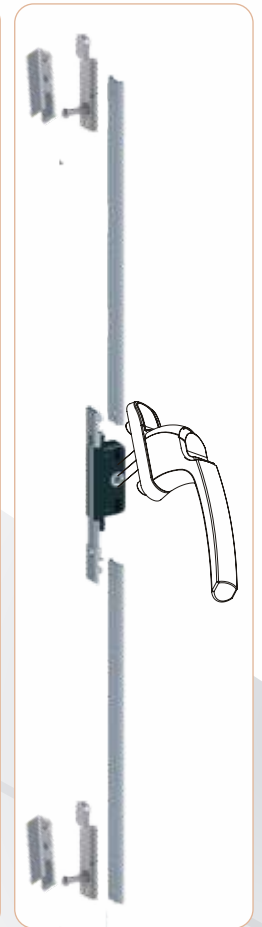
Non/Euro Groove System 2



Non/Euro Groove System 3



Euro Groove System 4



Euro Groove System 5

Strikers



Counter Plate SCP 01



Counter Plate SCP 02



Counter Plate SCP 03



Counter Plate SCP 04



Counter Plate SCP 05



Counter Plate SCP 11



Counter Plate SCP 12



Counter Plate SCP 13



Counter Plate SCP 14



Sliding Zinc Striker SWK 04



Sliding Striker SWK 02



T Drive TPT 02



J Hook SN 03



Nib Holder SN 04



Sliding Nib SN 11



Sliding Nib SN 12



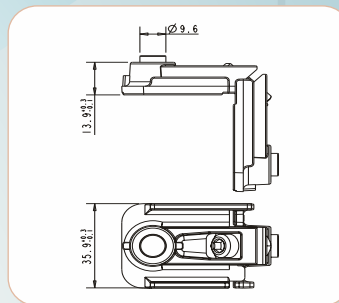
Sliding Nib SN 01



Sliding Nib SN 02

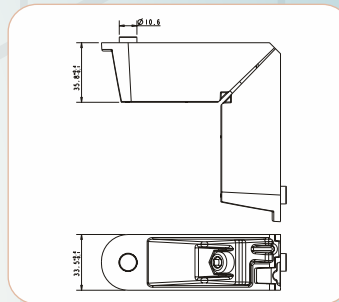
CC 40

Casement Cleat
(40/52mm series)



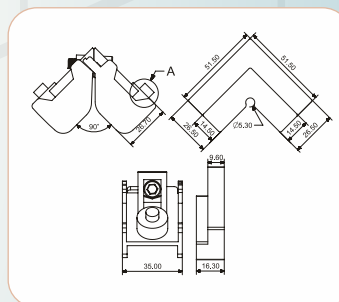
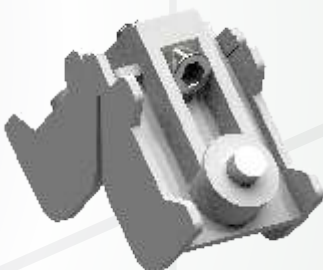
CC 1010

Casement Door
Corner Cleat



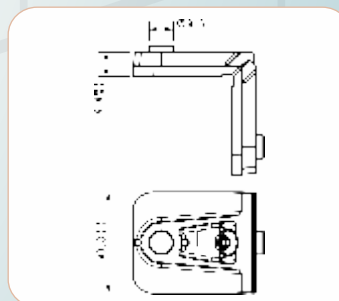
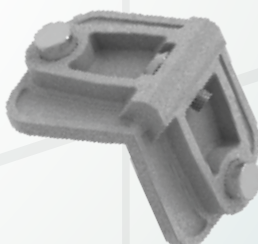
CC 50WS

Casement window
Corner Cleat
(50mm series: window sash)



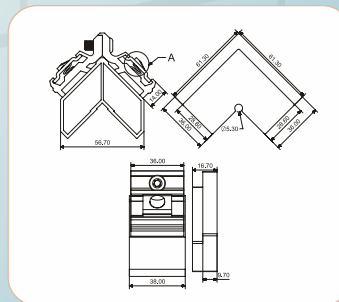
CC 50WF

Casement window
Corner Cleat
(50mm series: window frame)



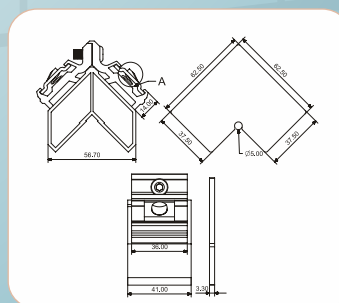
CC 50DS

Casement door
Corner Cleat
(50mm series: door sash)



CC 50DF

Casement door
Corner Cleat
(50mm series: door frame)

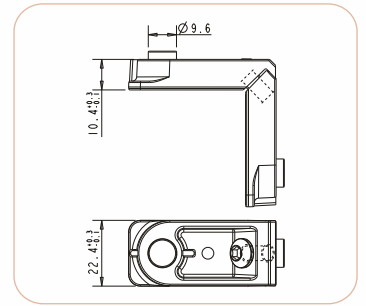


Corner Cleats (Casement)

Corner Cleats (Sliding)

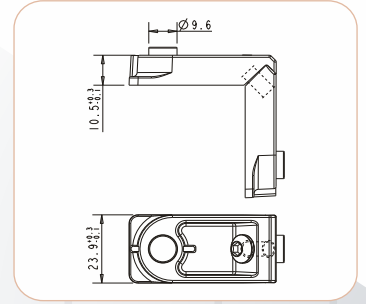
CC 27

Sliding Corner Cleat
(27mm series)



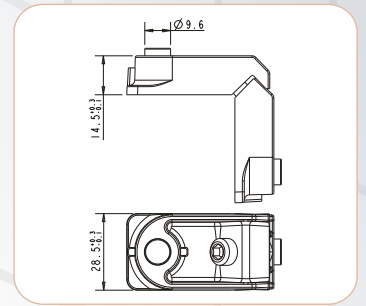
CC 29

Sliding Corner Cleat
(29mm series)



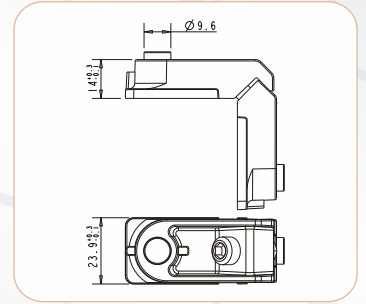
CC 37

Sliding Corner Cleat
(37mm series)



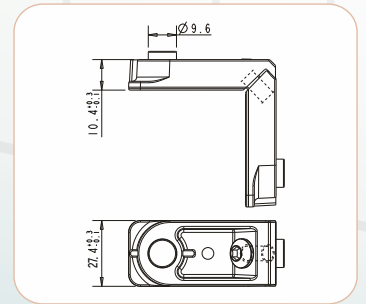
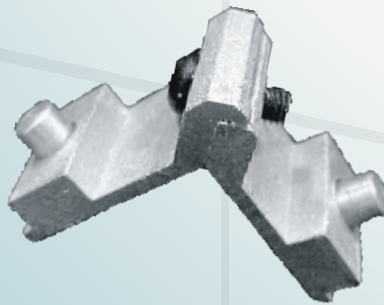
CC 443

Sliding Corner Cleat



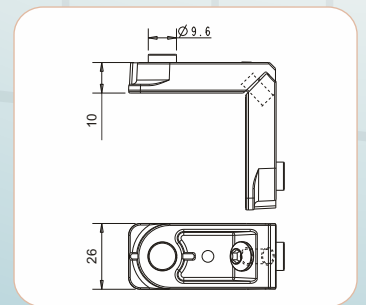
CC 35

Sliding Corner Cleat
(35 mm series)



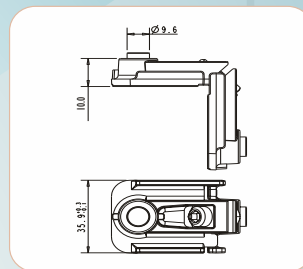
CC 2610

Casement Corner Cleat



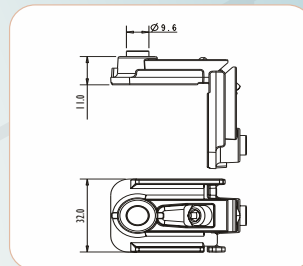
CC 3610

Corner Cleat



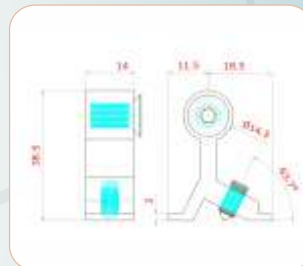
CC 3211

Corner Cleat



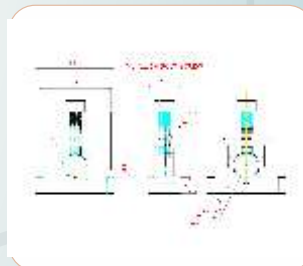
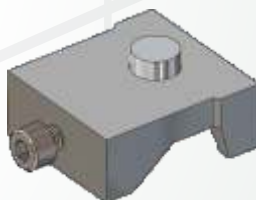
MC 40A

Mullion Connector
(40mm series)



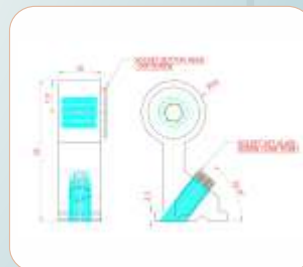
MC 40B

Mullion Connector
(40mm series)



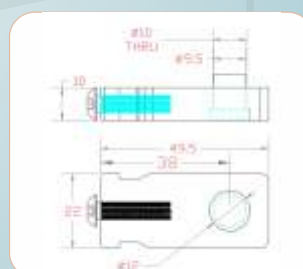
MC 50

Mullion Connector
(50mm series)



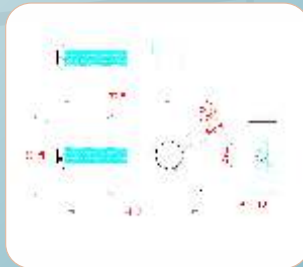
MC 29

Sliding Mullion Connector
(27/29mm Series)



MC 32

Sliding Mullion Connector
(27/29mm Series)

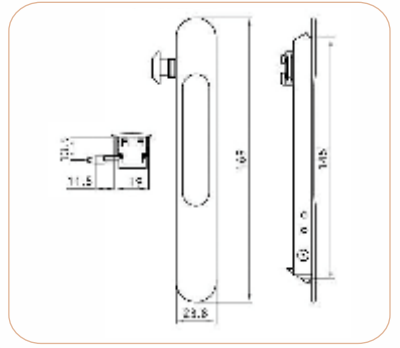


Corner Cleats

Sliding Locks

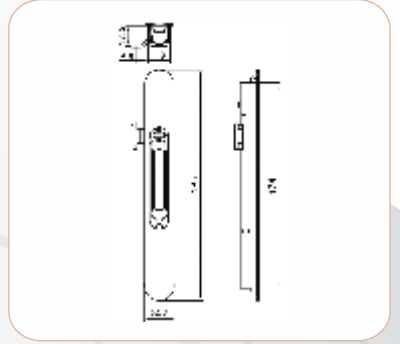
SL 01

Sliding Window Lock



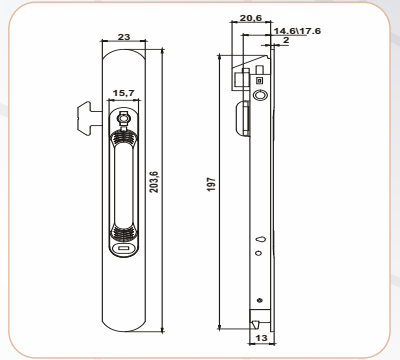
SL 13

Sliding Door Lock



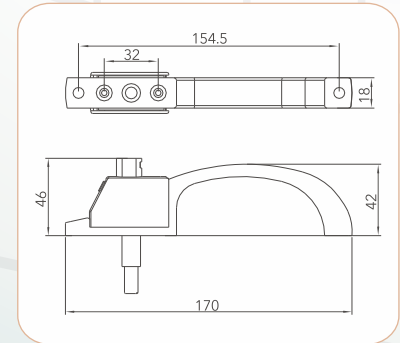
SL 14

Sliding Door Lock



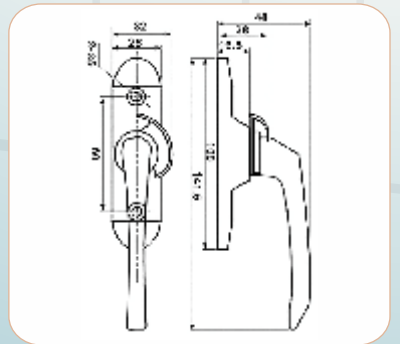
SL 11

Center Sliding Door Handle



SL 36I

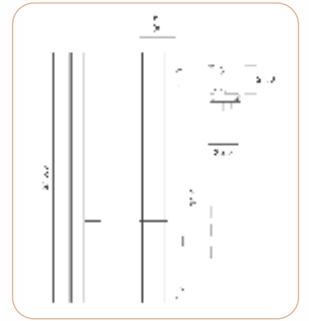
Crescent Lock



Sliding Handles (Fork)

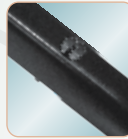
SL 74

Sliding Metro Handle

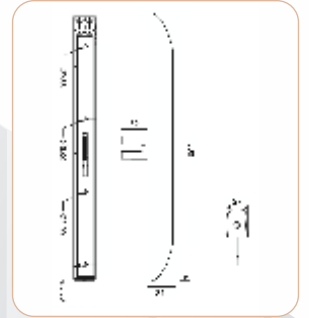


SL 81

Sliding Metro Handle

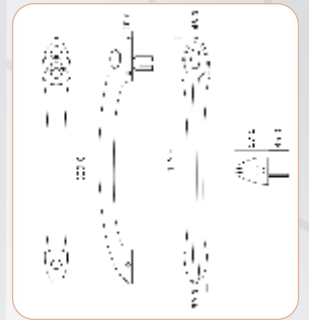


Handle With Key



SL 73

Sliding Multi Point Pull Handle

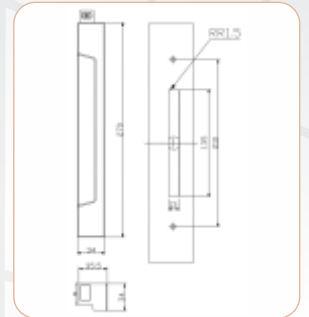


SL 82

Sliding Multi Point Handle (on/off) Left/Right



Handle With Key

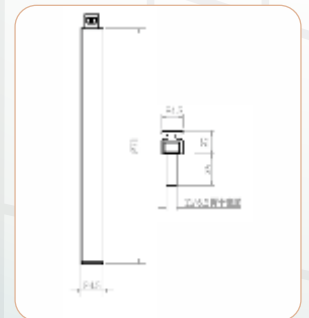


SL 83

Sliding Multi Point Universal Handle (On/Off) 10" & 12"

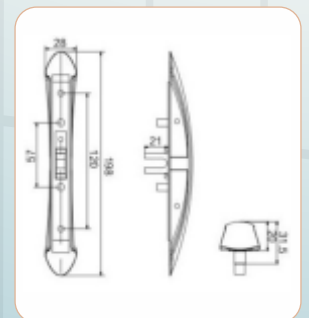


Handle With Key



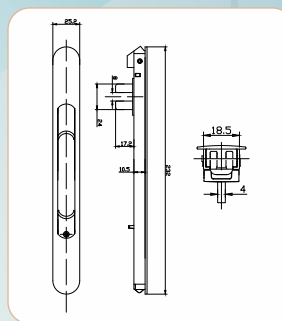
SL 85

Sliding bullet handle



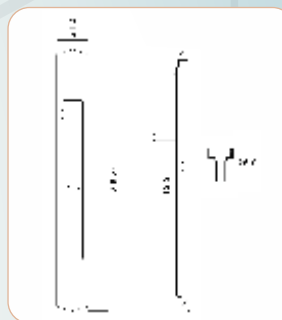
SL 14F

Concealed Door Handle



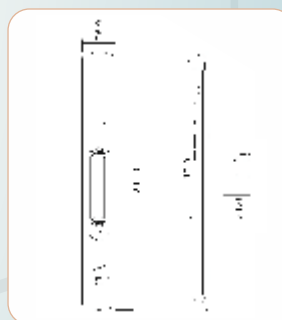
SL 75

Concealed Door Handle



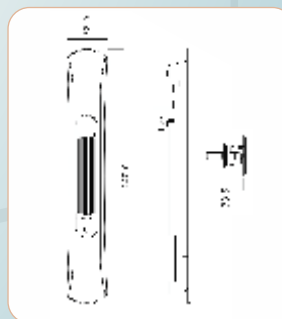
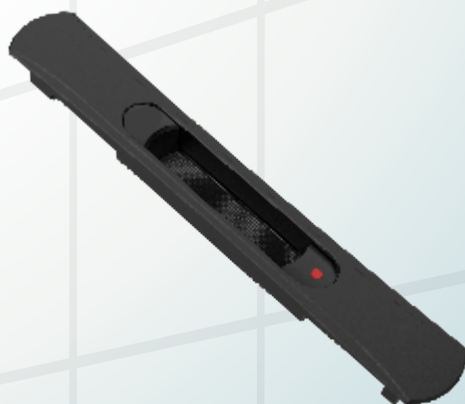
SL 76

Concealed Door Handle with child lock



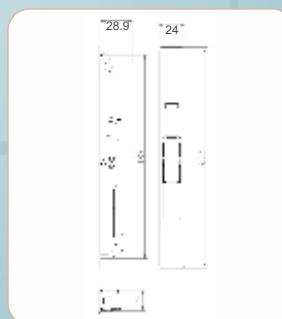
SL 77

Concealed Big Door Handle



SL 86

Concealed Door Handle

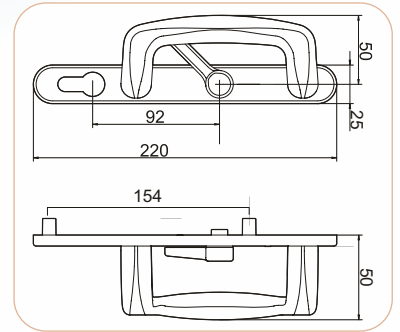


Sliding Concealed Handles (Fork)

Sliding Handles (Spindle)

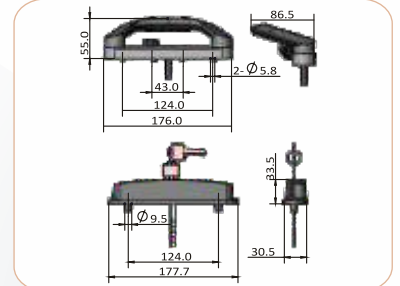
SL 33

Sliding Lockable
Patio Handle on
both sides



SL 71

Sliding D Handle
with lockable
dummy handle

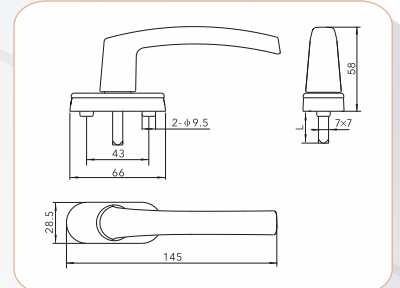


SL 34M

Transmission
Handle

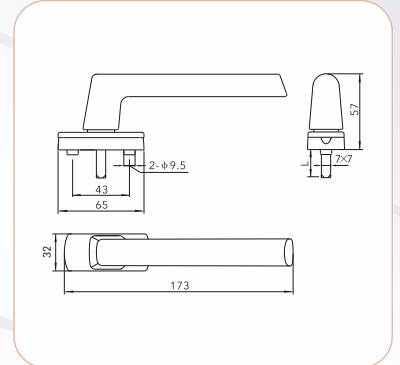


Key Option
SL 34MK



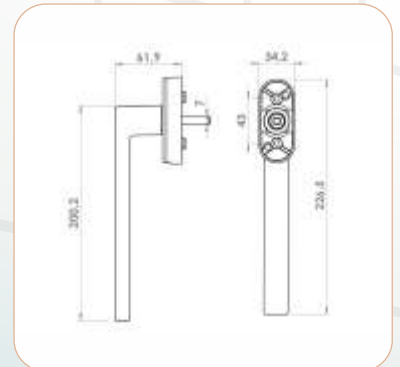
SL 54

Transmission
Handle



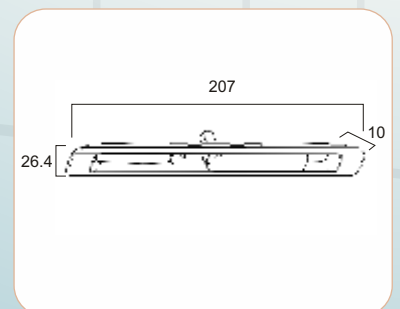
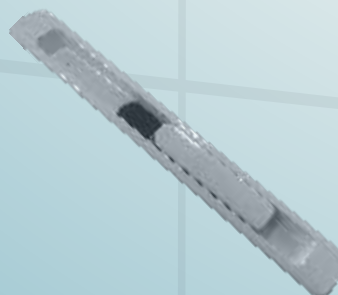
SL 91

Sliding Long
Door Handle



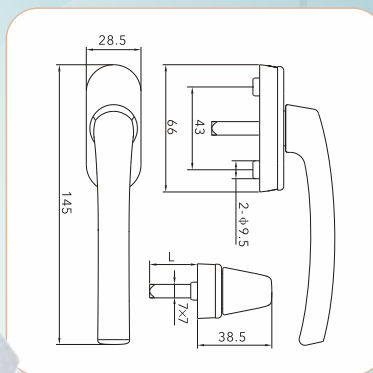
SL 49

Concealed handle



SL 38

Short Neck Door Handle

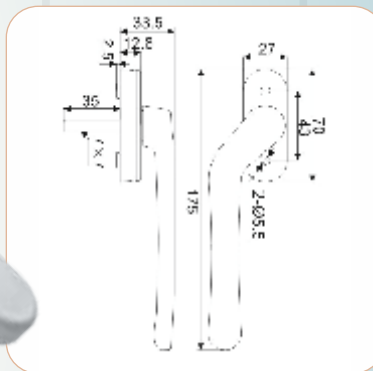


SL 47

Short Neck Crank Door Handle

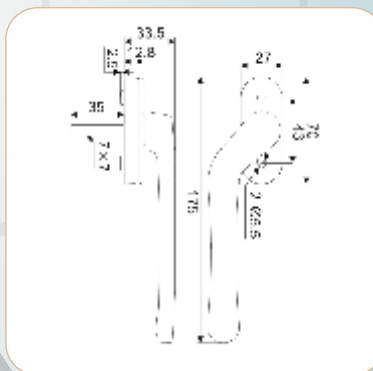


SL47K Handle With Key



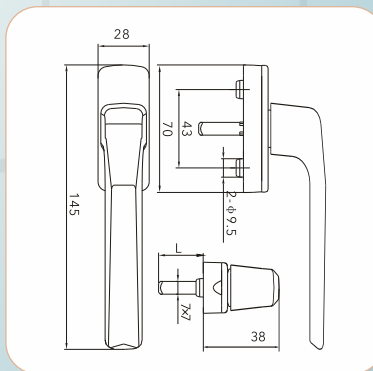
SL 47FT

Short Neck Door Handle (Right / Left)



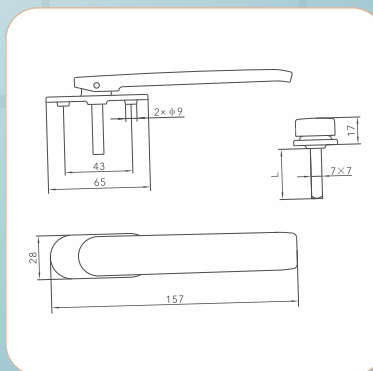
SL 50

Short Neck Door Handle



SL 55

Short Neck Door Handle

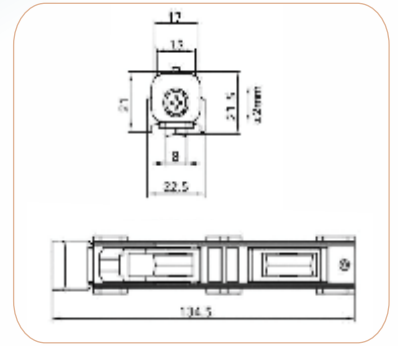
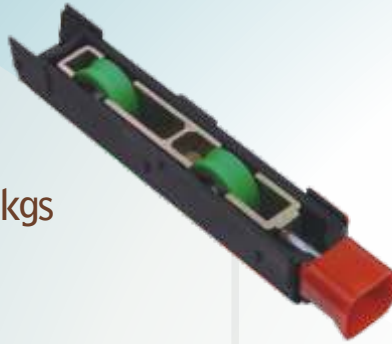


Sliding Short Neck Handles

Sliding Rollers

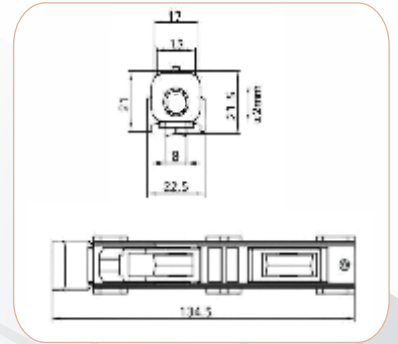
SR 01BB

Sliding Double Wheel Adjustable Door Roller
Load Capacity: 120 kgs (27/29 mm series)



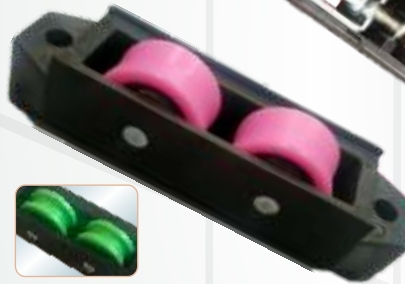
SR 01A

Sliding Double Wheel Adjustable Door Roller
Load Capacity: 70 kgs

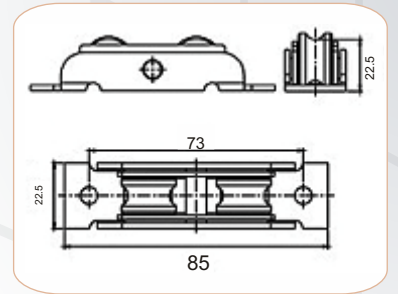


SR 15

Sliding Double Wheel Roller
Load Capacity SR15A: 60 kgs
SR15B: 90 kgs



U groove option



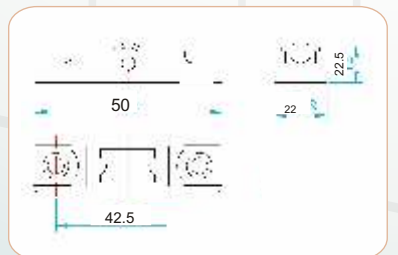
SR 05

Sliding Window Roller
Load Capacity: 30 kgs (27/29 mm series)



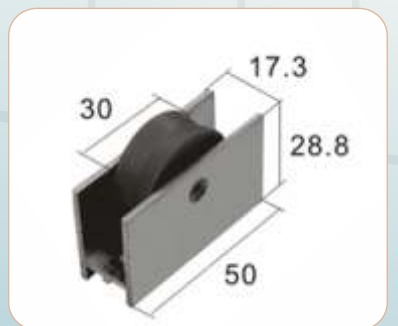
SR 14

Sliding Window Roller
Load Capacity: 20Kg



SR 06

Sliding Door Roller
Load Capacity: 50Kg



SR 42

Sliding Double Wheel Adjustable Roller
Load Capacity: 175Kg
(37mm Series)



SR 44

Sliding Double Wheel Adjustable Roller
Load Capacity: 120Kg



SR 45

Sliding Single Wheel Adjustable Roller
Load Capacity: 60Kg
(37mm series)

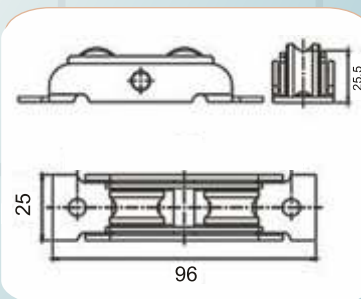


U groove option



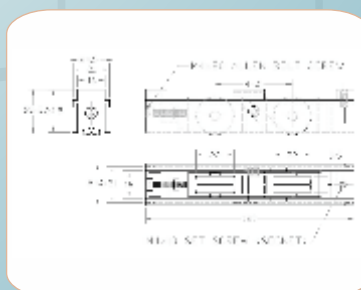
SR 46

Sliding Double Wheel Roller
Load Capacity: 80Kg
(35mm series)



SR 48

Sliding Double Wheel Adjustable Roller
Load Capacity: 120Kg
(35mm series)

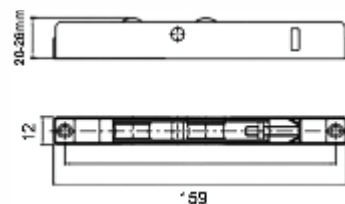
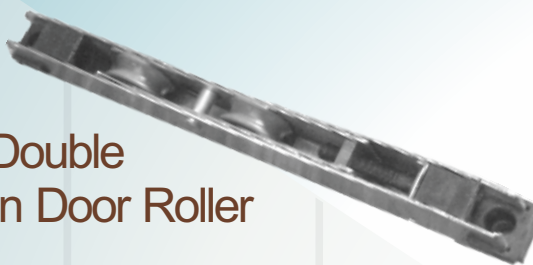


Sliding Rollers

Sliding Rollers (U Groove)

SR 24

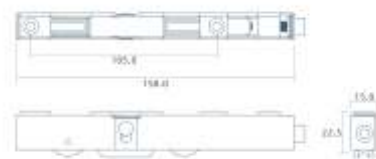
Adjustable Double Wheel Nylon Door Roller



100 Kgs

SR 51

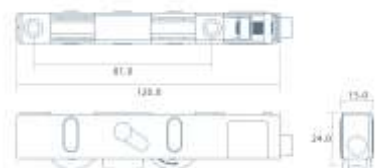
Adjustable Double Wheel Nylon Door Roller (27/29 mm series)



80 Kgs

SR 52

Adjustable Double Wheel Nylon Door Roller



100 Kgs

SR 53

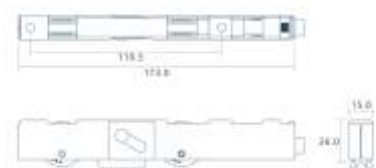
Adjustable Four Wheel Nylon Door Roller (27/29 mm series)



240 Kgs

SR 54

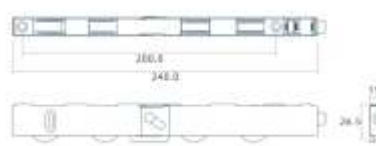
Adjustable Double Wheel Nylon Door Roller (35/37 mm series)



120 Kgs

SR 55

Adjustable Four Wheel Nylon Door Roller (35/37 mm series)



300 Kgs



SR 21 PVC

Single Wheel Nylon Roller
Load Capacity: 35Kg



SR 23 PVC

Double Wheel Nylon
Swing Roller
Load Capacity: 55Kg



SR 04

Sliding
'V' Door Roller
Load Capacity: 30Kg

U groove option



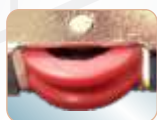
SR 04-30

Single wheel Door Roller
Load Capacity : 40Kgs



SR 16

Sliding Metal Body Roller
Load Capacity: 20Kg



SR 16S

Sliding Metal Body Roller
Load Capacity: 20Kg



DS 11

Bump Stopper



DS 12

Bump Stopper



DS 13

Bump Stopper



DS 14

Bump Stopper



Sliding Rollers

Sliding System Accesories

(27mm, 35mm & 37mm Series)

System Accesories



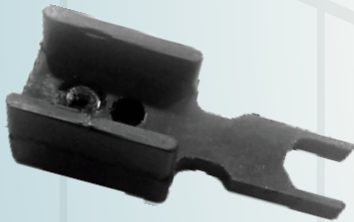
MS 01
Sash Wing
Connector



MS 02
Anticapillary Pad



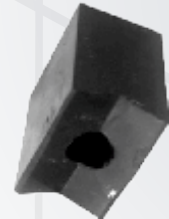
MS 03
Sash Stopper



MS 04
Anti Lift



MS 05
Anti Lift Handle



MS 06
Sliding Stopper



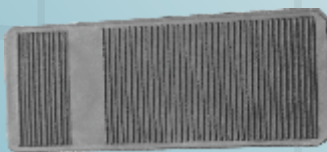
MS 07
Interlock Cap



MS 09
Anti Retling Guide



MS 10
U Packer



MS 11
Glass Packer



MS 12
Fastener Cap



Wool Pile
5x6, 6x6 & 6.8x6, 6x7

Test Certificates

ZINC ALLOY		
Date: 06-Aug-19 07:43 PM Sample ID: ID-D190806018-1	Program: Zn-60-X Comment: Zn Alloy	
Element	%	Test Method
Zinc	95.77	SOP/CHE/00-Zn
Aluminium	3.56	--do--
Copper	0.630	IS 2599:1983 (RA 2000)
Magnesium	0.007	SOP/CHE/00-Zn
Cadmium	0.0002	--do--
Iron	0.010	IS 2599:1983 (RA 2000)
Indium	0.0001	SOP/CHE/00-Zn
Nickel	0.0090	--do--
Lead	0.0074	--do--
Tin	0.0001	--do--
Thallium	0.0001	--do--

STAINLESS STEEL				
Date: 06-Aug-19 04:12 PM Sample ID: ID-D190806018-2	Program: Fe-30-X Comment: SS/Fe			
Element	%	Specified	Conformity	Test Method
Carbon	0.044	0.080 Max	Yes	ASTM E-1086-2014
Silicon	0.379	0.750 Max	Yes	--do--
Manganese	1.10	2.00 Max	Yes	--do--
Sulphur	<0.005	0.030 Max	Yes	--do--
Phosphorus	0.0310	0.045 Max	Yes	--do--
Chromium	18.51	18 Min - 20.00 Max	Yes	--do--
Nickel	8.08	8 Min - 10.50 Max	Yes	--do--
Nitrogen	0.045	0.100 Max	Yes	SOP/CHE/00-SS
Remark: Sample Conforms to Grade AISI304 with respect to above test.				

ALUMINIUM ALLOY		
Date: 08-Aug-19 07:48 PM Sample ID: ID-D190806018-4	Program: Al-10-X Comment: Al1-Alloy	
Element	%	Test Method
Copper	0.620	ASTM E1251-2011
Magnesium	0.250	--do--
Silicon	6.54	--do--
Iron	0.650	SOP/CHE/00-AL
Nickel	0.019	ASTM E1251-2011
Manganese	0.374	--do--
Zinc	0.446	--do--
Lead	0.024	SOP/CHE/00-AL
Tin	0.012	--do--
Titanium	0.033	ASTM E1251-2011
Chromium	0.016	--do--
Vanadium	0.011	--do--

TEST RESULTS																			
During each observation, indicate the number of parts involved. The sum of each column should correspond to the total number of parts for the test																			
A: no rust					B: appearance of white rust					C: white rust over more than 5% of the surface					D: appearance of red rust				
D																			
C																			
B																			
A	✓	✓	✓	✓															
Hours	24	48	72	96	120	SUNDAY	144	168	192	216	240	264	SUNDAY	288	312	336	360	384	408
Date	9-7-18	10-7-18	11-7-18	12-7-18	13-7-18		15-7-18	16-7-18	17-7-18	18-7-18	19-7-18	20-7-18		22-7-18	23-7-18	24-7-18	25-7-18	26-7-18	27-7-18
D																			
C	X	X	X	X	X		X	X											
B																			
A																			
Hours	456	480	504	528	552	SUNDAY	576	600	624										
Date	30-7-18	31-7-18	1-8-18	2-8-18	3-8-18		5-8-18	6-8-18	7-8-18										
Appearance of White Rust					Appearance of Red Rust					Total test duration									
120 / 144 Hours					624 Hours					624 Hours									
TEST RESULTS																			
COMPLIES					✓					DOES NOT COMPLY					%				
Note/Not: The test chamber is opened at 17 ⁰⁰ hours everyday for test piece checking and replacement.																			
Comments: after 120 Hours first White Rust Appearance after 144 Hours more than %5 White Rust after 624 Hours first Red Rust Appearance																			

ID No- D190806018-4			
Thickness of Coating			
S. N.	Test Parameter	Result	Test Method
1.	Thickness of Powder Coating	90 - 95 micron	IS:6012-1992 (RA-2010)

ID-D190806008-3			
Thickness of Coating			
S. N.	Test Parameter	Result	Test Method
1.	Thickness of Zinc Coating	14.5 micron	IS:1573-1986

Head Office & Application Centre:

Pego Hardware

Plot No. 28/1/8, Site IV
Sahibabad Industrial Area
Ghaziabad (U.P.) - 201010 (India)

Regional Office (Delhi)

Pego Hardware

4899, Hauz Qazi,
Delhi - 110006 (India)

Regional Office (Coimbatore)

Pego Hardware

No. 2/227F Erangattu Thottam, Rasiplyam,
Sulur, Coimbatore - 641402 (India)

Ph: 91-11-23213774, 41515035

E-Mail: info@pego.in

www.pego.in

For Sales:

North: +91-9999697732 | West: +91-8929070625 | Andhra & Telangana: +91-8929070624
East: +91-9319623434 | Karnataka: +91-9999697660 | Tamilnadu: +91-9999697736