



BDCA SERIES
HAZARDOUS LOCATION
DIE CAST ALUMINUM LED
CLASS I, DIVISION 2
GROUPS A, B, C & D
IP 66
T4 TEMP RATING



FEATURES & SPECIFICATIONS:

Housing:

Heavy-Duty Die Cast Aluminum Housing and Top Frame. Can Be Tapped for Side Conduit Entry.

Finish:

Platinum Powdercoat Finish Over a Chromate Conversion Coating. Custom Colors Available Upon Request.

Lens:

Clear Polycarbonate or Frosted Polycarbonate Vandal-Resistant Lenses available.

Mounting Options:

Stainless Steel Adjustable Bracket or Yoke Mount.

Wattage:

26W or 37W.

Driver:

Electronic Driver, 120-277V, 50/60Hz or 347/480V, 50/60Hz;
Dimmable Driver

Listing & Ratings:

ETL Listed for Hazardous Locations Per UL844 as Follows:

Class 1, Division 2 Groups A, B, C, D

T4 Temperature Rating

IP66

5-Year Warranty.

APPLICATIONS:

- Paint Booths
- Waste Water Treatment Plants
- Shipyard Facilities
- Coastal Marine Areas
- Chemical Plants
- Pharmaceutical Plants
- Cold Storage Facilities
- Hazardous Storage Areas
- Corrosive Environments

Hazardous Location LED Imports

www.bpolighting.com

14655 Champion Forest Dr. #1802 • Houston, Texas 77069 • (832) 977-1536

BDCA SERIES

ORDERING INFORMATION

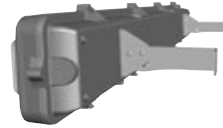
SERIES/LENGTH	O QWP V&I	LED WATTAGE	VOLTAGE	CCT	LENS	OPTIONS
BDCA	**	**	*			
SERIES/ LENGTH BDCA = 12"	MOUNTING [M"?] QMG'O QWP V CM"? "CFLWUCDNG" SS BRACKET" QM = QUICK MOUNT	LED WATTAGE 26W = 26 WATTS 37W = 37 WATTS	VOLTAGE U = 120-277V 480 = 347-480V	CCT U = 120-277V 480 = 347-480V	LENS C = CLEAR F = FROSTED	OPTIONS 40K = 4000K 50K = 5000K HH = HORIZOHOOD VH = VERTOHOOD WL = WET LOCATION ONLY

MOUNTING OPTIONS

QTF GT GF 'UGRGT'CVGN] .HGKF 'P'UVCNNGF



GGMC? 9'ACI BH



SH5-B@9GG GH99@
58>1 GH56@9 6F 57? 9H
f69HC: HK CL



SS QUICK MOUNT
(WET LOCATION
ONLY)

PHOTOMETRIC PERFORMANCE

WALL LIGHT APPLICATIONS

LED Board Watts	Drive Current (mA)	Input Watts	Optics	5000K		4000K	
				Lumens	LPW	Lumens	LPW
26w Clear lens	116	26	Horizontal Frame -Type III	3,126	120	3,001	115
26w Frosted lens			Horizontal Frame -Type IV	2,369	91	2,274	88
26w Clear lens			Vertical Frame -Type III	3,305	127	3,172	122
26w Frosted lens			Vertical Frame -Type III	2,705	104	2,597	100
37w Clear lens		43	Horizontal Frame -Type III	4,879	114	4,684	109
37w Frosted lens			Horizontal Frame -Type IV	4,071	95	3,908	91
37w Clear lens			Vertical Frame -Type II	5,292	123	5,081	118
37w Frosted lens			Vertical Frame -Type II	4,399	102	4,223	98

CANOPY/CEILING APPLICATIONS

LED Board Watts	Drive Current (mA)	Input Watts	Optics	Spacing Criteria	5000K		4000K	
					Lumens	LPW	Lumens	LPW
26w Clear lens	116	26	Open Frame (110° x 110°)	1.34	3,332	128	3,199	123
26w Frosted lens			Open Frame (110° x 120°)	1.26	2,945	113	2,828	109
37w Clear lens		43	Open Frame (110° x 110°)	1.26	5,538	129	5,316	124
37w Frosted lens			Open Frame (110° x 120°)	1.26	4,948	115	4,750	111

Hazardous Location LED Imports

www.bpolighting.com

14655 Champion Forest Dr. #1802 • Houston, Texas 77069 • (832) 977-1536