



Class 1 Division 1



Key Features

- FEATURES:**
- Mobile Light / Remote Area Light
 - High/Low/Flashing Modes
 - 30 Min Visible Low Battery Warning Indicator
 - Completely Collapsible
 - Easy Carry
 - Quick Set Up
 - Supports a Full Work Shift
 - Delivering Situational Awareness

Compliance

UL 913
Class I Division 1 Groups A, B, C, D and T4
Ex ia IIC T4 Ga
Class I, Zone 0, AEx ia IIC T4 Ga
ATEX II 1G Ex ia IIC T4 Ga
IECEX Ex ia IIC T4 Ga

Applications

Oil and Gas

Petroleum production and refining
Petroleum loading, storage, transportation and retail
Confined spaces with vapor accumulation
LNG and LPG handling
Oil tankers and shipping vessels
Fuel system testing facilities

Power Plants

Coal-fired power plants, including coal handling and storage areas
Gas-fired power plants with fuel storage
Nuclear power facilities in hazardous auxiliary areas
Biomass or waste-to-energy plants with combustible dust risks

Industrial

Industrial storage facilities
Paper mills, sawmills and lumber yards
Loading dock platforms
Manufacturing plants for heavy industrial goods
Warehouses handling flammable materials

Waste Treatment

Wastewater treatment plants
Pumping stations
Solid waste processing and incineration facilities
Sewage treatment with methane gas risks
Hazardous waste recycling centers

Mining

Operations and service areas
Underground mining tunnels with gas accumulation

Chemical Industry

Chemical production, processing and storage facilities
Solvent handling and mixing areas
Chemical research labs with flammable substances

Ocean, Marine and Aerospace

Offshore platform operation facilities and structures
Marine and saltwater environments
Aerospace clean rooms and production areas
Ocean vessel operations
Shipyards and dry docks
Aircraft hangars with fuel vapors

Metal Treatment

Paint facilities
Steel and aluminum factories
Metal smelting, foundry and fabrication
Welding and cutting areas with gas risks

Military and Defense

Ammunition storage and handling
Fuel depots and refueling stations
Explosives manufacturing
Vehicle maintenance bays in hazardous zones

Food, Alcohol and Agriculture Industry

Flour and fine particle production and storage
Food and distilling production
Grain storage elevators and silos
Breweries and fermentation tanks
Feed mills with dust risks
Fertilizer production and storage

Pharmaceutical Industry

Drug manufacturing and solvent handling
Clean rooms with volatile compounds
Pill coating and drying areas
Research and development labs

Other high humidity, high dust, high temperature and vapor locations

Specifications

Wattage	5 W - 19.5 W		
Mode	Flashing	Work Light	Strong Light

OPTICAL

Lumen Output	≥ 500 lm	1600 lm
Color Temperature: CCT	Standard: 5000K Options: 3000K - 5000K	
Beam Angle	125°	
Deployable Mast Beam Rotation	360°	
Lamp Type	LED	
Lamp Heads	1	

ENVIRONMENTAL

Ambient Operating Temperature	-20°C to +40°C (4°F to +104°F)
-------------------------------	--------------------------------

MECHANICAL

Housing Material	Plastic
Head	Aluminum Alloy
Lens Diffuser	Plastic
IP Rating	20
Finish	Yellow

ELECTRICAL

Run Time	Up to 10 Hrs (Max)
Battery Type	Ni-MH
Battery Capacity	10.8V, 9Ah
Rechargeable	Yes
Charge Volts	DC10.8V-14.4 V
Battery Level Indicator	Full-time battery level display and low battery warning (visible flashing)
Volts	10.8V (Battery); AC100V/277V (Charger)

Ordering Logic

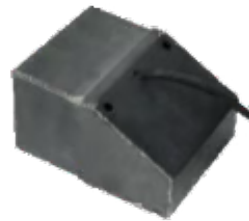
ORDER EXAMPLE: MV EX 19.5W MV01

(1) Product	(2) Product Category	(3) Wattage	(4) Body
MV	EX - Explosion Proof	19.5 W	MV01

Accessories



Charger (USA)



Replacement Battery



Charger (EU)

Product Dimensions

MV Folded



MV Deployable Height



Deployable Height 1 Min: 22.3" [587 mm]
Deployable Height 2 Min: 25" [636 mm]

Packaging Information

Fixture Dimensions	14.0" x 8.1" (355mm x 205mm)
Deployable Height 1	Min. 22.3" x 31.5" (567mm x 800mm)
Deployable Height 2	Min. 25.0" x 35.8" (636mm x 910mm)
Package Dimensions	22.4" x 13.8" x 14.4" (568mm x 351mm x 365mm)
Net Fixture Weight	15.4 lb (7 kg)