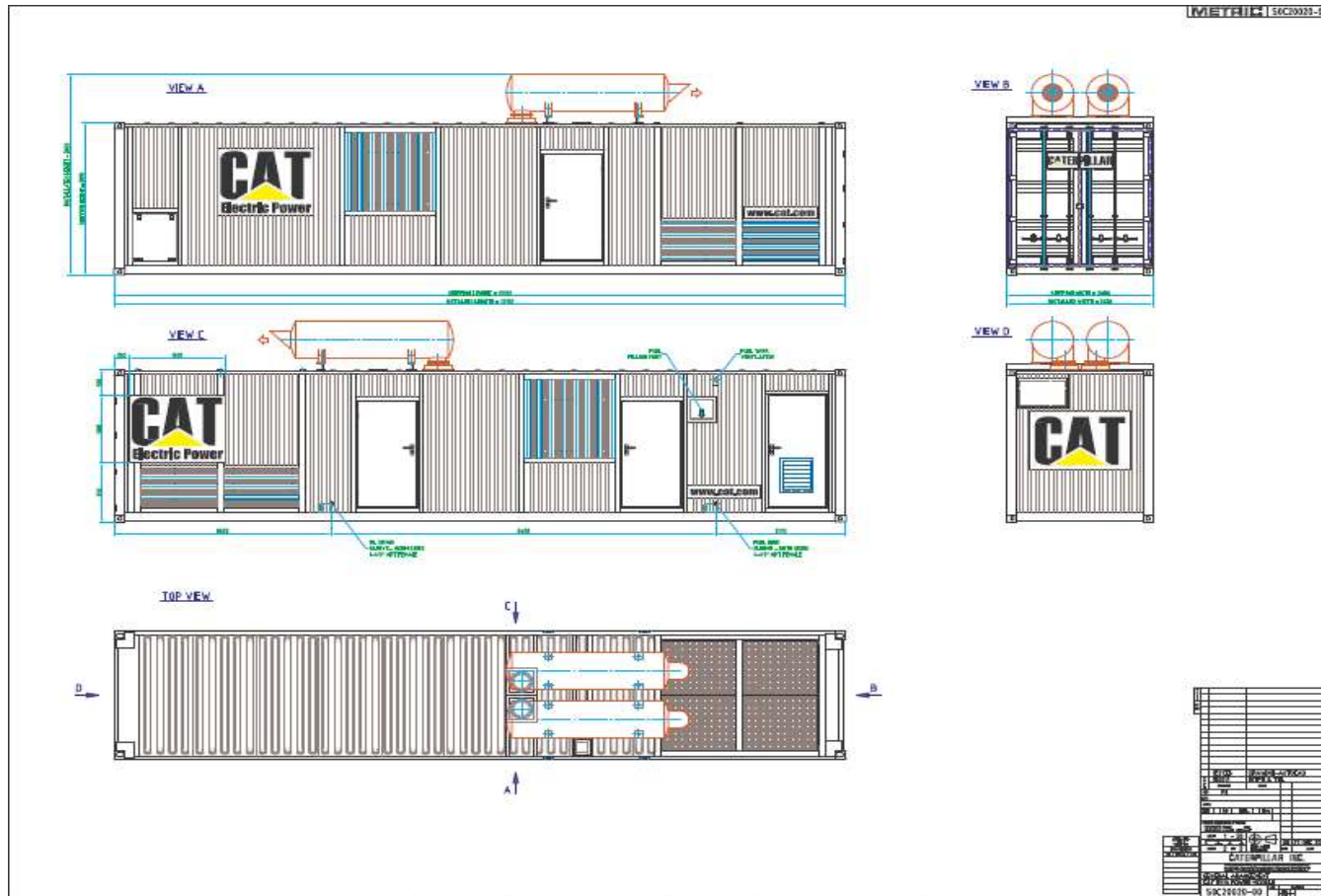


CAT 3516B Power Module GA



Equipment Status Report 11-11-2020

Sr. No	Eq. No.	Engine Serial No.	Engine Model	Power Module	Present Smr	Need To Repair		PMS	Valve Lash Schedule			Overhauling Schedule				Status of Units
						MECHANICAL	ELECTRICAL		Last PMS	Last VL SMR	Hrs.before VL	Last OH Type	Next OH Type	Last OH SMR	Hrs.Before OH	
Future																
2	5018188	ZAP01150	CAT-3516 B	XQ-2000	35367			35108	34,862	1,295	Complete	Top	26124	-1,743	OPERATIONAL	
3	5018220	ZAP01334	CAT-3516 B	XQ-2000	47762			47492	45,984	222	Top & Bottom	Complete	43370	3,508	OPERATIONAL	
4	5018234	ZAP01391	CAT-3516 B	XQ-2000	24897	4 pcs.Radiator Fan Blades	1 Radiator Motor Fan	24740	23,737	840	Top	Top & Bottom	8402	-8,905	OPERATIONAL	
5	5018102	ZAP01042	CAT-3516 B	XQ-2000	51740			51611	51,162	1,417	Complete	Top	32061	-11,004	OPERATIONAL	
6	5018173	ZAP01070	CAT-3516 B	XQ-2000	35411			35410	33,591	180	Complete	Top	31352	3,441	OPERATIONAL	
7	5018211	ZAP01329	CAT-3516 B	XQ-2000	46789			46719	46,380	1,591	Top	Top & Bottom	34037	-5,252	OPERATIONAL	
8	5018236	ZAP01402	CAT-3516 B	XQ-2000	42954			43858	42,190	236	Complete	Top	37775	1,321	OPERATIONAL	
9	5018150	ZAP01007	CAT-3516 B	XQ-2000	42092			41966	41,574	1,482	Top & Bottom	Complete	20612	-13,080	OPERATIONAL	
11	5018157	ZAP01011	CAT-3516 B	XQ-2000	37807			37455	37,186	1,379	Complete	Top	23901	-6,406	OPERATIONAL	
12	5018181	ZAP01101	CAT-3516 B	XQ-2000	41829		Defective Exciter Rotor and Stator & ESB	42712	40,966	137	Complete	Top	26498	-8,831	OPERATIONAL	
13	5018222	ZAP01367	CAT-3516 B	XQ-2000	37591			37490	35,851	290	Complete	Top	20013	-1,878	OPERATIONAL	
15	5018109	GZS00836	CAT-3516 B	XQ-2000	38152			37810	36,414	262	Top & Bottom	Complete	18518	-12,034	OPERATIONAL	
16	5018155	ZAP01039	CAT-3516 B	XQ-2000	38723			38428	37,028	303	Complete	Top	30555	-868	OPERATIONAL	
17	5018235	ZAP01366	CAT-3516 B	XQ-2000	35058			35038	33,425	367	Complete	Top	28016	-1,543	OPERATIONAL	
18	5018036	BPD01186	CAT-3516 B	XQ-2000	37747			37481	36,098	351	Complete	Top	27652	-2,595	OPERATIONAL	
20	5018230	ZAP01030	CAT-3516 B	XQ-2000	36202			36032	36,144	1,942	Complete	Top	31825	3,123	OPERATIONAL	
21	5018205	ZAP01365	CAT-3516 B	XQ-2000	41671			41314	40,199	526	Top & Bottom	Complete	36374	2,203	OPERATIONAL	
22	1215004	ZAH00643	CAT-3512	XQ-1500	34133			33863	32,958	825	Top & Bottom	Complete	21007	-5,826	OPERATIONAL	
23	5018130	ZAP00876	CAT-3516 B	XQ-2000	39183			30103	29,732	1,549	Complete	Top	11076	-11,007	OPERATIONAL	
24	5018138	GZS00892	CAT-3516 B	XQ-2000	51174			53145	52,112	938	Top	Top & Bottom	38304	-6,370	OPERATIONAL	
25	5018071	GZS00784	CAT-3516 B	XQ-2000	46220			46025	45,615	1,305	Top	Top & Bottom	38652	-8	OPERATIONAL	
26	5018109	ZAP01006	CAT-3516 B	XQ-2000	49308			49190	47,968	650	Top	Top & Bottom	43124	1,316	OPERATIONAL	

Engine



Engine & Radiator Side



Radiator



Alternator




Alternator

CATERPILLAR®
GENERATOR SET

SALES MODEL **36103**

RATING
2281 KVA 1825 KW 0.8 COS φ 60 HERTZ
 CONTINUOUS PRIME STANDBY

GENERATOR DATA

3 PHASE  6 WIRE
CONNECTION Y WYE (STAR) DELTA
 SERIES PARALLEL
GENERATOR 480 VOLTS 2744 AMPS
EXCITATION 29 VOLTS 6.3 AMPS
827 FRAME 1800 REV/MIN
MAXIMUM TEMPERATURE RISE 105 °C BY RESISTANCE
50 °C AMBIENT 1000 METERS ALTITUDE
CLASS H INSULATION
ENCLOSURE TYPE 2
YEAR 2009

INCLUDE SERIAL NUMBER AND GENERATOR PART NUMBER FROM GENERATOR SERIAL NUMBER PLATE WHEN ORDERING PARTS AND IN CORRESPONDENCE.
GENERATOR FRAME SHOULD BE GROUNDED.

4P-2118 2



Control Panel



Synchronizer & output Main CB Cubicle



Load sharing module



Motor Starter & Battery charger



Container

