

destination **Tuscany**

If you're exploring Tuscany, **choose the bus** for your transportation needs.

Here you'll find all the information you need to reach the main tourist destinations in Tuscany by bus.

Wondering about ticket prices? Can you purchase one on board? Or which stop is the closest to your destination?

Destination Tuscany has got you covered, making sure you can travel **safely and sustainably** whilst soaking in the region's wonders.



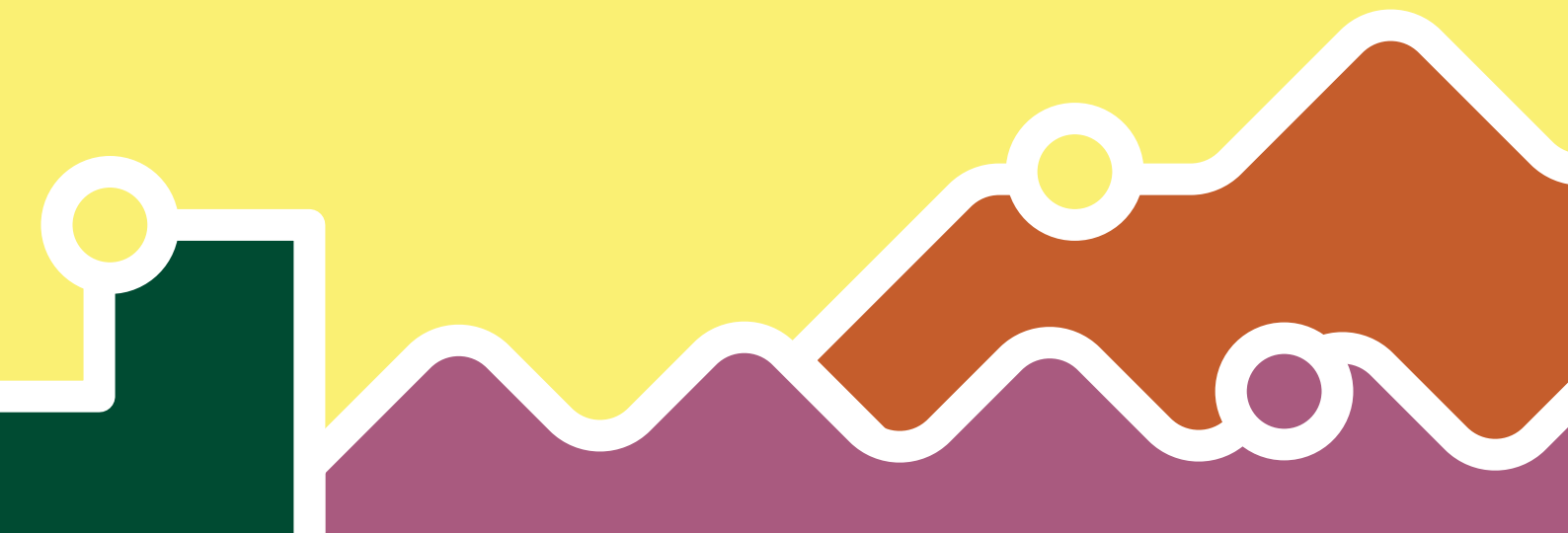
Arrival and departure

To reach **Florence** from Peretola Airport,
use [T2 tram line](#)

To reach **Pisa** from G. Galilei Airport,
use [Bus Line 3+ of the Pisa urban service](#)

To travel between **Siena and Florence**,
use [suburban line 131](#) o la [131R fast route](#)
[suburban line](#)

To reach the **historic centre of Siena** from
the **FS station**, use [Bus Line 0S3 of the Siena](#)
[urban service](#)



Tickets and fares

Here you'll find all you need to know about our ticketing options and where to get them www.at-bus.it/ticket

Travelling alone? **Tip tap**, our new **contactless payment method on board**, is now up and running.

If you're travelling with friends or family and want to buy tickets for everyone, simply download the **at bus app**.

Save paper, go digital!



“at bus” app: purchase any ticket type or bundles hassle-free



On-board contactless **“tip tap”**: you can purchase all types of tickets. **On urban lines, tap each time you board. On interurban lines, tap when you board and again when you disembark!**

You can also purchase tickets at physical locations such as ticket offices, retailers, or automatic ticket machines.

Find all the information [here](#).

Wondering how to figure out which ticket suits your trip best?

No worries! Each bus line comes with its own colour, corresponding to specific fares.

- **jade green** for city routes
- **orange** for mixed-fare lines, offering urban or suburban tickets tailored to your specific journey needs
- **blue** for suburban routes
- **purple** for fast route suburban routes

Travel tips

For a full breakdown, head to our [Travel Conditions](#) page for more information.

- **Travel rules:** you need a ticket and must validate it at the beginning of each trip
- **Baggage policy:** you can carry one piece of luggage, up to 105 cm in size, for free
- **Child fare:** children under one meter in height travel for free
- **Pet policy:** you can bring along your furry friend for free, provided they are kept in a carrier no larger than 140 cm and do not occupy a seat
- **Services for those with mobility needs:** reservation service available. Call our dedicated toll-free number at 800 14 24 25 (open every day from 08:00 to 20:00)

Where are you going?



**Do you need further informations?
Visit at-bus.it/en/talk-with-at**