

# ShaliMastic® RS TC

3K Refined Coal Tar Concentrate Pavement Sealer



STP Limited

## Description

**ShaliMastic® RS TC** is a three component UV resistant coal tar concentrate pavement surface crack repair-cum-sealer. It is fuel / weather resistant and prevents ingress of water.

It complies with the standard ASTM D5727, Federal specification R-P-355e and ASTM D490. ShaliMastic RS TC is formulated specifically to protect new and sound roads, whereas it can be blended with graded filler and polymer to make the road wear resistant and smooth appearance.

## Characteristics

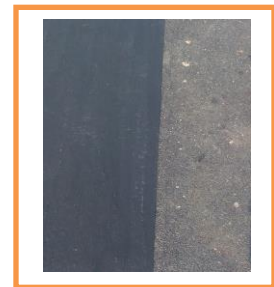
Colour	Black	Non-volatiles, wt. %	47 - 53
Ash, Non-volatiles, Wt. %	30 - 40		
Drying time, hrs • Touch dry • Full cure	1 8	Resistance to • Kerosene • Water	No loss of adhesion or penetration
Density @ 25°C, Minimum	1.20	Flexibility	No cracking or flaking
Resistance to heat	No blistering or sagging	Adhesion and Resistance to water	No loss of adhesion
Solubility of Non-volatiles in CS <sub>2</sub> , % Minimum	20	Wet film continuity	Smooth, Non-granular, free from coarse particles
State	Emulsion, Slurry	Uniformity	No separation, coagulation, or settlement that cannot be overcome by moderate stirring.

## Application

- Expressway, Highway, Parking Lots, driveways, restaurants and hotels.
- Gasoline stations, service stations and truck terminals.
- School yards, play areas and home driveways.
- Airfields, taxiways and shoulders, or anywhere that the asphalt surface is exposed to gas and oil spillage, extensive abrasion, or weathering extremes.

## Advantages

- Seals hair cracks and small pores in roads.
- Protects asphalt aggregate surface by preventing water penetration.
- Protects concrete road and tyre of vehicles from abnormal wear and tear.
- Exhibits outstanding fuel resistance.
- Can be formulated as a wear resistant coating.
- It can be used as dust palliative coating for concrete surfaces.



## Application Methodology

### ➤ Surface Preparation

- Remove all loose gravel, dirt, oil, grease and foreign matter by jet of dry air.
- Ensure that the pavement is sound, firm, even and fully cured. In case of new rigid pavement, ensure that the pavement is at least 28 days old.

- Ensure that there is no standing water in the area of application.
- Ensure correction of cracks exceeding 1 mm must be corrected prior to application of **ShaliMastic® RS TC**.
  - In case of flexible roads, by ShaliTex Sealing Compound / ShaliPatch.
  - In case of concrete roads, by ShaliPatch EC.

#### ➤ Material Preparation

- Ensure that clean water free from of harmful soluble salts having pH 7 - 8 is used in preparation of mix.

Recommended Mix Design					
Pavement Use	ShaliMastic RS TC, gm	Clean Water with pH 7 - 8, gm	ShaliFill 40 gm	STP Polymer Latex3, gm	Coats
Prime Coat / m <sup>2</sup>	500	500	--	25	1
Top Coat / m <sup>2</sup>	500	300 - 400	200 - 225	25	1-2*

\* For low to medium traffic 1 top coat and for old pavement and high traffic 2 top coats are recommended.

#### ➤ Application of Material

- Prime surface with **ShaliMastic® RS TC** as per the specified mix design. Allow to dry for 1 hr.
- Apply one or two top coats of **ShaliMastic® RS TC** with an interval of 1 hour as per the mix design. Coverage rate and number of top coats may vary depending upon the porosity, pavement age and texture of the pavement surface.
- Spread **ShaliMastic® RS TC** and mechanically squeeze to ensure uniform surface.
- Top-up with **ShaliSeal® RS TC**.

#### Limitations

- Do the coating when no rain is forecasted in 24 hrs.
- Ensure that the ambient temperature is in the range of 10 °C - 45 °C.

#### Health & Safety

- Avoid contact with skin / eyes and avoid swallowing.
- Ensure adequate ventilation and avoid inhalation of vapour.
- Wear suitable protective clothing, gloves and eye protection.
- In case of contact with skin, rinse with plenty of clean water, then cleanse with soap and water. Do not use solvent to clean the contacted area.
- In case of contact with eyes, wash immediately with plenty of clean water and seek medical advice.
- If swallowed, seek medical attention immediately. Do not induce vomiting.

#### Packing

Available in 20 kg and 200 kg combo pack.

#### Storage

Store in a cool dry place, under shed, away from heat.

#### Shelf Life

12 months in original unopened sealed condition.



**STP Limited**  
*Enhancing Structures' Life*

### Product Range

- Waterproofing and Insulation
- Road Surfacing
- Sealants and Additives
- Pipeline Coating
- Protective / Anti-Corrosive Coating
- Epoxy Flooring
- Grouts / Admixtures
- RestoFix- Repair / Rehabilitation
- Other Construction Chemicals



**Advisory Cell: +91 81302 81114**

14319