

RYEMT Short-Term Camp

Taiwan Harmony Tour:

The Fusion of Ecology and Culture



CAMP THEME

Visit Taiwan's historic and cultural capital, **Tainan City**, and explore its historical buildings, heritage sites, and temples. Then, discover **Alishan**, one of Taiwan's most famous scenic destinations. **The Alishan National Scenic Area** offers a cool and refreshing climate, breathtaking mountain landscapes, lush forests, and picturesque tea plantations. Experience the rich indigenous **Tsou culture** and immerse yourself in the area's diverse and vibrant ecosystem.



2025/6/24 (Tue)-**7/7** (Mon)



2025/6/24 (Tue) **Tainan HSR Station**
Starbucks Coffee

(Rotary members will not provide airport pickup services. Participants must arrange their own transportation to Tainan HSR Station.)

Accompanied by Rotary Members Throughout the Trip



US\$450 per Person

2025/7/6 (Sun) **Farewell Party in Taipei**



Age:18-22



2025/7/7 (Mon) **Say goodbye at Airport**

Welcome to **TAIWAN**

Rotary
District 3470



rotary
youth
exchange

RYEMT Short-Term Camp

Taiwan Harmony Tour: The Fusion of Ecology and Culture

Day 1

- Welcome Reception and Transfer

Day 2

- Chimei Museum
- Ten Drum Cultural Village

Day 3

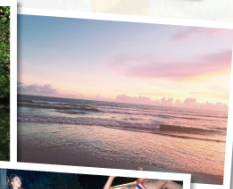
- Anping Fort
- Sicao Green Tunnel
- Sunset at Yuguang Island

Day 4

- Tainan Art Museum (Building 2)
- National Museum of Taiwan Literature (Former Tainan Prefectural Government)
- Confucius Temple Cultural Zone (Tainan Confucius Temple)

Day 5

- Double-Decker Bus Day Tour / Free Time



Host District :D3470 RYE Committee

RYEMT Short-Term Camp
Taiwan Harmony Tour:
The Fusion of Ecology and Culture

Rotary  **rotary youth exchange**
District 3470

Day 6

- Host Family Day (activities arranged individually by host families)

Day 7

- Datong Mountain / Fenqihu
- Overnight stay: Lu guo hao mei Divine wayside

Day 8

- Datong Mountain / Fenqihu
- Overnight stay: Lu guo hao mei Divine wayside

Day 9

- Morning: Tea Garden Scenery & Tea-Making Experience
- Afternoon: Tsou Tribe Cultural Experience (YuYuPas)
- Overnight stay: Lu guo hao mei Divine wayside

Day 10

- Alishan Forest Recreation Area Tour (Forest, Sacred Tree, Train Ride)
- Overnight stay: Lu guo hao mei Divine wayside

Day 11

- Return to Douliu → Train to Taipei / Taipei Metro Tour
- Shilin Residence / Chiang Kai-shek Memorial Hall

Day 12

- Lin Family Mansion and Garden (Banqiao)
- Free Time

Day 13

- National Palace Museum / Free Time/
- Farewell Party in Taipei

Day 14

- Say goodbye at Airport



Host District :D3470 RYE Committee