

# RACKOWPOLYMERS COM

Toll Free Phone: 877-RACKOW1 or 877-722-5691



*Overcap Catalog*

# TABLE OF CONTENTS

Double Shell Caps ----- 3 & 4



Necked In Caps ----- 5 & 6



Stacker & 33 mm Caps ----7



33mm & Rim Snap Caps -- 8



Brush / Bristle Cap ----- 8



Domed Caps ----- 9



Tamper Resistant Caps ---- 9



Snap Lock ----- 9



Scraper Caps ----- 9



Specialty Caps ----- 9



Squeeze & Pull -- Call for info



Aluminum Can Caps  
Call for info



Art Line Caps --- Call for info



Sexton ITW Caps  
Call for info





# DOUBLE SHELL OVERCAPS

202 DS



Finishes: Gloss  
Dia.: 52 mm Height: 44 mm  
Corner Finish: 1/4" radius  
Case Size: 19"x14 5/8"x18  
Case Count: 800 Case Wt: 16#  
Boxes / Skid: 24

202 DSIS



Finishes: Gloss & Matte  
Dia.: 52 mm Height: 29 mm  
Corner Finish: 1/8" radius  
Case Size: 19"x14 5/8"x18  
Case Count: Case Wt:  
Boxes / Skid: 24

202 DSA



Finishes: Gloss  
Dia.: 52 mm Height: 45 mm  
Corner Finish: 1/8" radius  
Case Size: 19"x14 5/8"x18  
Case Count: 800 Case Wt: 16#  
Boxes / Skid: 24

202 DSC



Finishes: Gloss  
Dia.: 52 mm Height: 45 mm  
Corner Finish: 1/16" radius  
Case Size: 19"x14 5/8"x18"  
Case Count: 800 Case Wt: 16#  
Boxes / Skid: 24

202 DSC  
Dome



Finishes: Gloss  
Dia.: 52 mm Height: 48 mm  
Corner Finish: Full Dome  
Case Size: 19"x14 5/8"x18  
Case Count: 550 Case Wt: 9#  
Boxes / Skid: 24

202 NI or  
DSC

**ART LINE**



Finishes: Embossed  
Dia.: 52 mm Height: 44 mm  
Corner Finish: 1/4" Radius  
Case Size: 19"x14 5/8"x18  
Case Count: 550 Case Wt: 9#  
Boxes / Skid: 24

211 NDS



Finishes: Gloss & Matte  
Dia.: 65 mm Height: 49 mm  
Corner Finish: 1/8" radius  
Case Size: 23"x23"x23"  
Case Count: 800 Case Wt: 22#  
Boxes / Skid: 16

211 DST



Finishes: Gloss  
Dia.: 65 mm Height:  
Corner Finish: radius  
Case Size:  
23"x23"x23"  
Case Count: 1,000 Case Wt: 29#

202 NIDS  
or NIDSC



Finishes: Gloss  
Dia.: 52 mm Height: 45 mm  
Corner Finish: 1/4" Radius  
Case Size: 19"x14 5/8"x18  
Case Count: 550 Case Wt: 9#  
Boxes / Skid: 24

211 DS



Finishes: Gloss & Matte  
Dia.: 65 mm Height: 42 mm  
Corner Finish: 1/16" radius  
Case Size: 23"x23"x23"  
Case Count: 1,000  
Case Wt: 27#

211 DSA



Finishes: Gloss  
Dia.: 65 mm Height: 42 mm  
Corner Finish: 1/8" radius  
Case Size: 23"x23"x23"  
Case Count: 850 Case Wt: 23#  
Boxes / Skid: 16

211 DSC

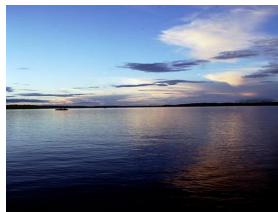


Finishes: Gloss &  
Matte  
Dia.: 65 mm Height: 50 mm  
Corner Finish: 1/8" radius  
Case Size: 23"x23"x23"  
Case Count: 850 Case Wt: 23#

214 NDS



Finishes: Gloss  
Dia.: 70 mm Height: 55 mm  
Corner Finish: 1/8" radius  
Case Size: 23"x23"x23"  
Case Count: 800 Case Wt: 30.5#  
Boxes / Skid: 16



*That some achieve great success, is proof to all that others can achieve it as well.*

300 DS



Finishes: Gloss  
Dia.: 70mm Height:  
42 mm  
Corner Finish: 1/8" radius  
Case Size: 23"x23"x23"  
Case Count: 800 Case Wt:  
Boxes / Skid: 16

RACKOW POLYMERS  .COM

Phone Toll Free: 877-RACKOW1

PAGE 3

# DOUBLE SHELL OVERCAPS

## 45 DSA



Finishes: Gloss  
 Dia.: 45 mm Height: 39 mm  
 Corner Finish: 1/16" radius  
 Case Size: 19"x14 5/8"x18"  
 Case Count: 600 Case Wt: 11#  
 Boxes / Skid: 24

## 45 DSC



Finishes: Gloss  
 Dia.: 45 mm Height: 40 mm  
 Corner Finish: 1/16" radius  
 Case Size: 19"x14 5/8"x18"  
 Case Count: 600 Case Wt: 11#  
 Boxes / Skid: 24

## 45 DS



Finishes: Gloss  
 Dia.: 45 mm Height: 38 mm  
 Corner Finish: 1/8" radius  
 Case Size: 19"x14 5/8"x18"  
 Case Count: 800 Case Wt: 13#  
 Boxes / Skid: 24

## 49 NDS



Finishes: Gloss  
 Diameter: 49 mm Height: 51 mm  
 Corner Finish: 1/8" radius  
 Case Size: 19"x14 5/8" x 18"  
 Case Count: 500 Case Wt: 12#  
 Boxes / Skid: 24



**All Overcaps Proudly  
 MADE IN AMERICA**

## 52 DSA



Finishes: Gloss  
 Diameter: 52 mm Height: 45 mm  
 Corner Finish: 1/8" radius  
 Case Size: 19"x14 5/8"x18"  
 Case Count: 800 Case Wt: 20#  
 Boxes / Skid: 24

## 52 DSC



Finishes: Gloss  
 Dia.: 52 mm Height: 45 mm  
 Corner Finish: 1/16" radius  
 Case Size: 19"x14 5/8"x18"  
 Case Count: 800 Case Wt: 20#  
 Boxes / Skid: 24

## 66 DSA



Finishes: Gloss &  
 Matte  
 Dia.: 66 mm Height: 55 mm  
 Corner Finish: 1/8" radius  
 Case Size: 23"x23"x23"  
 Case Count: 675 Case Wt: 23#

## 66 DSC



Finishes: Gloss & Matte  
 Dia.: 66 mm Height: 55 mm  
 Corner Finish: 1/8" radius  
 Case Size: 23"x23"x23"  
 Case Count: 675 Case Wt: 23#  
 Boxes / Skid: 16



*Success is not the key to happiness. Happiness is the key to success. If you love what you are doing, you will be successful.*  
 Albert Schweitzer

## 38 / 40 mm DS



Finishes: Gloss  
 Dia.: 38 mm Height: 40 mm  
 Corner Finish: 1/8" radius  
 Case Size: 19"x14 5/8"x18" Case  
 Count: 1,200 Case Wt: 18#  
 Boxes / Skid: 24

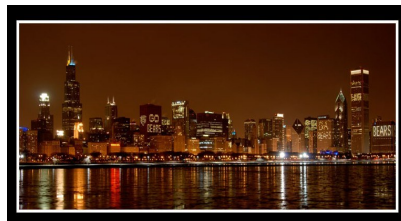


*The dictionary is the only place where success comes before work.*  
 Mark Twain

## 202 Squeeze & Pull DSC



Finishes: Gloss & Matte  
 Dia.: 52 mm Height: 45 mm  
 Corner Finish: 1/4" radius  
 Case Size: 19"x14 5/8"x18"  
 Case Count: 800 Case Wt: 22#  
 Boxes / Skid: 24



*Success is never wondering what if.*  
 Karrie Huffman

## 202 Squeeze & Pull DSA



Finishes: Gloss & Matte  
 Dia.: 52 mm Height: 45 mm  
 Corner Finish: 1/4" radius  
 Case Size: 19"x14 5/8"x18"  
 Case Count: 800 Case Wt: 22#  
 Boxes / Skid: 24

# NECKED IN OVERCAPS

45 NI



Finishes: Gloss  
Dia.: 45 mm Height: 56 mm  
Corner Finish: 1/8" radius  
Case Size: 19"x14 5/8"x18  
Case Count: 800 Case Wt:  
Boxes / Skid: 24

45 NI  
Soft Edge



Finishes: Gloss  
Dia.: 45 mm Height: 58 mm  
Corner Finish: 1/4" radius  
Case Size: 19"x14 5/8"x18"  
Case Count: Case Wt:  
Boxes / Skid: 24

45 / 60 NI



Finishes: Gloss  
Dia.: 45 mm Height: 60 mm  
Corner Finish: 1/8" radius  
Case Size: 19"x14 5/8"x18"  
Case Count: 1,400 Case Wt:  
Boxes / Skid: 16

49 NI



Finishes: Gloss  
Dia.: 49 mm Height: 50 mm  
Corner Finish: 1/8" radius  
Case Size: 19"x14 5/8"x18"  
Case Count: 550 Case Wt:  
Boxes / Skid: 16



*Success is the sum of small ef-  
forts, repeated day in and day out.  
Robert Collier*

202 NI



Finishes: Gloss  
Dia.: 52 mm Height: 38 mm  
Corner Finish: 1/16" and 1/8" rad  
Case Size: 19"x14 5/8"x18"  
Case Count: 650 Case Wt:  
Boxes / Skid: 24

202 NIH



Finishes: Gloss  
Dia.: 52 mm Height: 43mm  
Corner Finish: 1/8" radius  
Case Size: 19"x14 5/8"x18"  
Case Count: 550 Case Wt:  
Boxes / Skid: 24

202 NIT



Finishes: Gloss  
Dia.: 52 mm  
Height: 49 mm  
Corner Finish: 1/8" radius  
Case Size: 19"x14 5/8"x18"  
Case Count: 550 Case Wt:

205 NI



Finishes: Gloss  
Dia.: 57 mm Height: 51 mm  
Corner Finish: 1/8" radius  
Case Size: 19"x14 5/8"x18"  
Case Count: Case Wt:  
Boxes / Skid: 24

211 NI /  
NIH



Finishes: Gloss & Matte  
Dia.: 65 mm Height 50 mm:  
Corner Finish: 1/8" radius  
Case Size: 23"x23"x23"  
Case Count: 1,000 Case Wt:  
Boxes / Skid: 16

211 NIT



Finishes: Gloss  
Dia.: 65 mm Height: 53 mm  
Corner Finish: 1/8" radius  
Case Size: 23"x23"x23"  
Case Count: 800 Case Wt: 16#  
Boxes / Skid: 24

214 NIH



Finishes: Gloss  
Dia.: 70 mm Height: 55 mm  
Corner Finish: 1/8" radius  
Case Size: 23"x23"x23"  
Case Count: 850 Case Wt: 23#  
Boxes / Skid: 16



*Success seems to be largely a  
matter of hanging on after others  
have let go.  
William Feather*

RACKOWPOLYMERS.COM

Phone Toll Free: 877-RACKOW1

PAGE 5

# NECKED IN OVERCAPS

**22 mm**



Finishes: Gloss & Matte  
 Dia.: 22 mm Height: 31 mm  
 Corner Finish: 1/16" radius  
 Case Size: 19"x14 5/8"x18"  
 Case Count: Case Wt:  
 Boxes / Skid: 24

**25 mm**



Finishes: Gloss & Matte  
 Dia.: 25 mm Height: 38 mm  
 Corner Finish: 1/16" radius  
 Case Size: 19"x14 5/8"x18"  
 Case Count: Case Wt:  
 Boxes / Skid: 24

**33 / 37 mm**



Finishes: Gloss  
 Dia.: 33 mm Height: 37 mm  
 Corner Finish: 1/16" radius  
 Case Size: 19"x14 5/8"x18"  
 Case Count: 1,500 Case Wt: 16.8#  
 Boxes / Skid: 24

**33 / 37 mm  
 Slip Fit**



Finishes: Gloss  
 Dia.: 33 mm Height: 37 mm  
 Corner Finish: 1/16" radius  
 Case Size: 19"x14 5/8"x18"  
 Case Count: 1,500 Case Wt:  
 16.8#

**33 / 39 mm**



Finishes: Gloss  
 Dia.: 33 mm Height: 39 mm  
 Corner Finish: 1/16" radius  
 Case Size: 19"x14 5/8"x18"  
 Case Count: 1,500 Case Wt: 16.8#  
 Boxes / Skid: 24

**33 / 40 mm**



Finishes: Gloss  
 Dia.: 33 mm Height: 40 mm  
 Corner Finish: 1/16" radius  
 Case Size: 19"x14 5/8"x18"  
 Case Count: 1,500 Case Wt: 17#  
 Boxes / Skid: 24

**33 / 41 mm**



Finishes: Gloss  
 Dia.: 33 mm Height: 41 mm  
 Corner Finish: 1/16" radius  
 Case Size: 19"x14 5/8"x18"  
 Case Count: 1,500 Case Wt: 17#

**33 / 45 mm**



Finishes: Gloss  
 Dia.: 33 mm Height: 45 mm  
 Corner Finish: 1/16" radius  
 Case Size: 19"x14 5/8"x18"  
 Case Count: 1,500 Case Wt: 17#  
 Boxes / Skid: 24

**34 / 26 mm**



Finishes: Gloss & Matte  
 Dia.: 34 mm Height: 26 mm  
 Corner Finish: 1/16" radius  
 Case Size: 19"x14 5/8"x18"  
 Case Count: Case Wt:  
 Boxes / Skid: 24

**34 / 26 mm  
 Embossed**



Finishes: Embossed  
 Dia.: 33 mm Height: 26 mm  
 Corner Finish: 1/16"  
 Case Size: 19"x14 5/8"x18"  
 Case Count: Case Wt:  
 Boxes / Skid: 24

**38 / 46 mm**



Finishes: Gloss  
 Dia.: 38 mm Height: 46 mm  
 Corner Finish: 1/16" radius  
 Case Size: 19"x14 5/8"x18"  
 Case Count: Case Wt:  
 Boxes / Skid: 24

**38 / 37 mm  
 Heavy Duty**



Finishes: Gloss  
 Dia.: 38 mm Height: 37 mm  
 Corner Finish: 1/16" radius  
 Case Size: 19"x14 5/8"x18"  
 Case Count: 1,500 Case Wt: 17#  
 Boxes / Skid: 24

**45 / 56 mm**



Finishes: Gloss  
 Dia.: 45 mm Height: 56 mm  
 Corner Finish: 3/16" radius  
 Case Size: 19"x14 5/8"x18"  
 Case Count: Case Wt:  
 Boxes / Skid: 24

**49 mm**



Finishes: Gloss  
 Dia.: 49 mm Height: 51 mm  
 Corner Finish: 1/8" radius  
 Case Size: 19"x14 5/8"x18"  
 Case Count: Case Wt:  
 Boxes / Skid: 24

**57 mm**



Finishes: Gloss  
 Dia.: 57 mm Height: 51 mm  
 Corner Finish: 1/16" radius  
 Case Size: 123"x23"x23"  
 Case Count: 800 Case Wt: 22#  
 Boxes / Skid: 16



# STACKER CAPS and 33 mm OVERCAPS

## 1" Stacker w/ Outside Knurls, With or without inside Ribs, with Straw Holder



Finishes: Knurls  
 Dia.: 33 mm Height: 27 mm  
 Corner Finish: No radius  
 Case Size: 19"x14 5/8"x18"  
 Case Count: 2,500 Case Wt: 17#  
 Boxes / Skid: 24

## 1" Stacker w/ Outside Smooth, with or without inside Ribs, with Straw Holder



Finishes: Smooth  
 Dia.: 33 mm Height: 27 mm  
 Corner Finish: No radius  
 Case Size: 19"x14 5/8"x18"  
 Case Count: 2,500 Case Wt: 17#  
 Boxes / Skid: 24

## 1" Stacker w/ Outside Knurls, with or Without inside Ribs, with Flat Top



Finishes: Knurls  
 Dia.: 33 mm Height: 26 mm  
 Corner Finish: 1/32" radius  
 Case Size: 19"x14 5/8"x18"  
 Case Count: 2,500 Case Wt: 17#  
 Boxes / Skid: 24

## 1" Stacker w/ Outside Smooth, With or without Inside ribs, with Flat Top



Finishes: Smooth  
 Dia.: 33 mm Height: 26 mm  
 Corner Finish: 1/32" radius  
 Case Size: 19"x14 5/8"x18"  
 Case Count: 2,500 Case Wt: 17#

## 1" Stacker w/ Outside Engraved, With or Without Inside Ribs, with Straw Holder



Finishes: Engraved  
 Dia.: 33 mm Height: 27 mm  
 Corner Finish: No radius  
 Case Size: 19"x14 5/8"x18"  
 Case Count: 2,500 Case Wt: 17#  
 Boxes / Skid: 24

## 1" Stacker w/ Outside Engraved, With or Without Inside Ribs, with Radius



Finishes: Engraved  
 Dia.: 33 mm Height: 27 mm  
 Corner Finish: 1/16" radius  
 Case Size: 19"x14 5/8"x18"  
 Case Count: 2,500 Case Wt: 17#  
 Boxes / Skid: 24

33 / 37 mm



Finishes: Gloss  
 Dia.: 33 mm Height: 37 mm  
 Corner Finish: 1/16" radius  
 Case Size: 19"x14 5/8"x18"  
 Case Ct: 1,500 Case Wt: 16.8#  
 Boxes / Skid: 24



*All our dreams can come true - if we have the courage to pursue them.*  
 Walt Disney

33 / 39 mm



Finishes: Gloss  
 Dia.: 33 mm Height: 39 mm  
 Corner Finish: 1/16" radius  
 Case Size: 19"x14 5/8"x18"  
 Case Ct: 1,500 Case Wt: 16.8#  
 Boxes / Skid: 24

## 33MM CAPS and RIM SNAP CAPS

**33 / 40 mm**



Finishes: Gloss  
 Dia.: 33 mm Height: 40 mm  
 Corner Finish: 1/16" radius  
 Case Size: 19"x14 5/8"x18"  
 Case Ct: 1,500 Case Wt: 16.8#  
 Boxes / Skid: 24

**33 / 41 mm**



Finishes: Gloss  
 Dia.: 33 mm Height: 41 mm  
 Corner Finish: 1/16" radius  
 Case Size: 19"x14 5/8"x18"  
 Case Ct: 1,500 Case Wt: 16.8#  
 Boxes / Skid: 24

**33 / 45 mm**



Finishes: Gloss  
 Dia.: 33 mm Height: 45 mm  
 Corner Finish: 1/16" radius  
 Case Size: 19"x14 5/8"x18"  
 Case Ct: 1,500 Case Wt: 16.8#  
 Boxes / Skid: 24

**202 RS**



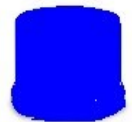
Finishes: Gloss  
 Dia.: 52 mm Height: 36 mm  
 Corner Finish: 1/16" radius  
 Case Size: 19"x14 5/8"x18"  
 Case Count: 700 Case Wt: 11#  
 Boxes / Skid: 24

**211 RS**



Finishes: Gloss  
 Dia.: 65 mm Height: 47 mm  
 Corner Finish: 1/16" radius  
 Case Size: 23"x23"x23"  
 Case Count: 900 Case Wt: 24.5#  
 Boxes / Skid: 16

**211 RST**



Finishes: Gloss  
 Dia.: 65 mm Height: 52 mm  
 Corner Finish: 1/16" radius  
 Case Size: 23"x23"x23"  
 Case Count: 900 Case Wt: 24.5#

**211 RSXT**



Finishes: Gloss  
 Dia.: 65 mm Height: 67 mm  
 Corner Finish: 1/16" radius  
 Case Size: 23"x23"x23"  
 Case Count: 800 Case Wt: 24.5#  
 Boxes / Skid: 16

**300 RS**



Finishes: Gloss  
 Dia.: 76 mm Height: 54 mm  
 Corner Finish: 1/8" radius  
 Case Size: 23"x23"x23"  
 Case Count: 700 Case Wt: 22#  
 Boxes / Skid: 16



*In order to discover new lands, one must be willing to lose sight of the shore for a very long time.  
 Anonymous*

**202 RSB  
 w/ Brush**



Finishes: Gloss  
 Dia.: 52mm Height: 35mm +12 mm  
 Corner Finish: Sharp radius  
 Case Size: 19"x14 5/8"x18"  
 Case Count: 550 Case Wt: 11#

**202 NIB  
 w/ Brush**



Finishes: Gloss  
 Dia.: 52 mm Height: 35mm+12mm  
 Corner Finish: Sharp radius  
 Case Size: 19"x14 5/8"x18"  
 Case Count: 550 Case Wt: 11#  
 Boxes / Skid: 24

**211 RSB**



Finishes: Gloss  
 Dia.: 65 mm Height: 47mm+12mm  
 Corner Finish: Sharp radius  
 Case Size: 23"x23"x23"  
 Case Count: 750 Case Wt: 29#  
 Boxes / Skid: 16

**RACKOWPOLYMERS**

Phone Toll Free: 877-RACKOW1



## SPECIALTY OVERCAPS

### 33 mm Bubble Cap



Finishes: Gloss  
Dia.: 33 mm Height: 32 mm  
Corner Finish: Bubble Top radius  
Case Size: 19"x14 5/8"x18"  
Case Count: Case Wt:  
Boxes / Skid: 24

### 202 Domed Cap



Finishes: Gloss  
Dia.: 52 mm Height: 46 mm  
Corner Finish: Full Dome radius  
Case Size: 19"x14 5/8"x18"  
Case Count:  
Case Wt:  
Boxes / Skid: 24

### 211 DS & DSC Domed Caps



Finishes: Gloss  
Dia.: 57 mm Height: 55 mm  
Corner Finish: Full Dome radius  
Case Size: 23" x 23" x 23"  
Case Count: Case Wt:  
Boxes / Skid: 16

### 202 SLT



Finishes: Gloss  
Dia.: 52 mm Height: 38 mm  
Corner Finish: 1/16" radius  
Case Size: 19"x14 5/8"x18"  
Case Count: Case Wt:  
Boxes / Skid: 24

### 211 SLT



Finishes: Gloss  
Dia.: 65 mm Height: 49 mm  
Corner Finish: 1/16" radius  
Case Size: 23" x 23" x 23"  
Case Count: Case Wt:  
Boxes / Skid: 16

### 202 Tamper Evident



Finishes: Gloss  
Dia.: 52 mm Height: 35 mm  
Corner Finish: 1/8" radius  
Case Size: 19" x 14 5/8" x 18"  
Case Count: Case Wt:  
Boxes / Skid: 24

### 211 Tamper Evident



Finishes: Gloss  
Dia.: 65 mm Height: 45 mm  
Corner Finish: 1/8" radius  
Case Size: 23" x 23" x 23"  
Case Count: Case Wt:  
Boxes / Skid: 16

### 211NI & DSC Spray Thru



Finishes: Gloss  
Dia.: 65 mm Height: 65 mm  
Corner Finish: 1/2" radius  
Case Size: 36" x 12" x 12"  
Case Count: 160 Case Wt:  
Boxes / Skid: 24

### 211 Scrapper Cap



Finishes: Gloss  
Dia.: 65 mm Height: 60 mm  
Corner Finish: No radius  
Case Size: 23" x 23" x 23"  
Case Count: Case Wt:  
Boxes / Skid: 16

**Ask us about out ART LINE  
EMBOSSSED CAPS  
To fit most size Cans.**

**RACKOWPOLYMERS**  **COM**

Phone Toll Free: 877-RACKOW1

Rackow Polymers Corporation has been in the plastic injection molding industry for over 30 years. In addition to this line of overcaps, we also offer applicators, dispensers, and specialty packaging for the aerosol packaging industry. Because we also do custom injection molding, we can help you with any custom designed overcaps you may require.

Call Bill toll free @ 877-722-5691 regarding information about custom molding or items in this catalog.

Check out our Website @

[www.RACKOWPOLYMERS.com](http://www.RACKOWPOLYMERS.com)

**RACKOWPOLYMERS**  **COM**

475 Thomas Drive, Bensenville, IL 60106

Toll Free Phone 877-722-5691

Phone 630-766-6589 Fax 630-766-6742

Web Site: [www.rackowpolymers.com](http://www.rackowpolymers.com)

Email: [sales@rackowpolymers.com](mailto:sales@rackowpolymers.com)