

# LABEL PRINTER

## Instruction Manual



Print Label  
Android editing software



Print Label  
IOS editing software

Install Password : 1234

Version April,2021

### Notes on safety

This section presents important information intended to ensure safety and effective use of the printer. Please read carefully.

#### Notes on safety

- ▲ Be sure to use the specified battery and power source provided by our company. Connection to an improper power source may cause fire, explosion or damage to the printer.
- ▲ Please don't open the paper room cover when it is printing or just when printing is over, do not touch the print head with hand or body, overheat may cause scald.

#### Notes:

1. Do not store the printer in hot and humid conditions.
2. The printer's power adapter is to be connected to a stable power 110-220Volts, please do not use other devices on the same power socket, to avoid voltage fluctuations.
3. Avoid water or conductive material (for example: metal). If water is present on the surface please turn off the power immediately.
4. Please ensure that a paper roll is always inserted in the printer to avoid damaging the printing roller and the printer head.
5. Please ensure that your printer is serviced and repaired by a qualified technician. No responsibility is taken for misuse and/or non-qualified servicing.
6. In order to ensure print quality and longevity of your printer, please ensure that only good quality paper rolls are used.
7. Please keep this manual in a safe place, where it can be accessed easily and used for your reference.

1

### 1.Features & Application area

- High-speed, Clear printing
- It can adjust the temperature intelligently when printing, and guarantee the stable operation of the machine.
- Without paper warehouse.

#### Application area

Manufacturing and warehousing industry	Retail	Specimen marking
Post package industry	Shelf label	Jewelry label
Price tag	Production mark	Patient identification
Product labeling	Home office	Instruction label
Mail delivery label	Medical industry	Drug labeling

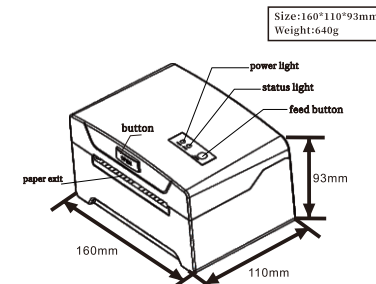
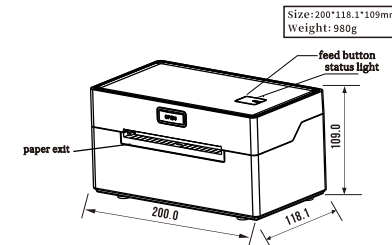
### 2.Specification

Printing method: Direct line thermal printing  
 Printing mechanical life: 50km or 100 million pulses  
 Resolution: 203dpi (8dot / mm)  
 Internal font: Support 11 font sizes  
 Print LOGO: Support download Logo Logo Printing (ESC / P0S)  
 Print command: TSPL command / (optional CPCL, ESC / POS command)  
 Media sensor: Reflective  
 Communication interface: USB + (LAN / Bluetooth 4.0 / WIFI) option al  
 Thermal paper type: Continuous paper, label paper, tag paper  
 Printing paper thickness: 0.06-0.20 mm  
 Power: DC 24V / 2.5A  
 Dimension code: UPC-A / UPC-E / JAN13 (EAN13) / JAN8 (EAN8) / CODE39 / ITF / CODABAR / CODE93 / CODE128  
 QR code: QR CODE / PDF417  
 Driver: Win2003 / WinXP / Win7 / Win8 / Win10 / MACOS  
 Mobile device: Support Android / IOS systems

2

### 3.Appearance

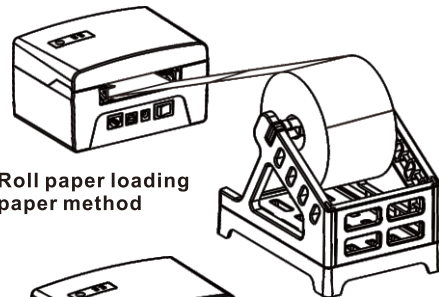
⚠ Note: Interfaces varies by customer choice, the interface shown below is for reference only.



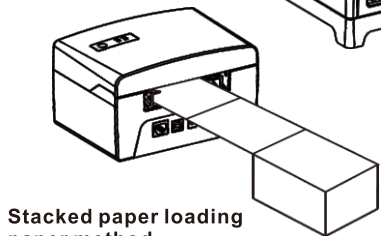
3

### 4. The installation of the paper roll

The printer use thermal label paper, and adopt to easy paper loading. So the paper is very convenient install. And also support printing of various paper specifications. Thermal paper installation method is as follows:  
 (1) Open the printer top cover  
 (2) Thermal Paper as follow Graph to put into paper storehouse  
 (3) Put out a little of the paper outside printer, then close the top cover.



#### Roll paper loading paper method



#### Stacked paper loading paper method

5

### Instruction of LED and Buttons :

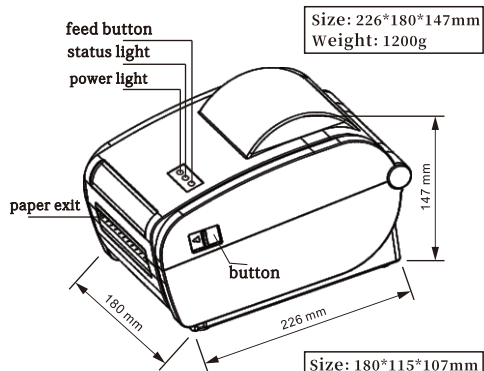
ERROR (RED light)	POWER (BLUE light)	PRINTER STATUS
OFF	OFF	PRINTER OFF
OFF	OFF/DISPLAY ON	PRINTER IS ON AND HAVE PAPER
Flash	OFF/DISPLAY ON	PRINTER IS ON AND NO PAPER
Press the power button about 3S		Printer power ON/OFF
When printer power on, press the FEED button		Paper out / Label positioning detection
Hold down the FEED button in the shutdown state, and then press and hold the POWER button to power on, when you see the "ERROR" Red right is ON, then release the FEED button.		Printer self-test page
Hold down the FEED button in the shutdown state, and then press and hold the POWER button to power on, when you see the "ERROR" Red right is ON and OFF, then release the FEED button.		HEX mode (press FEED button two times to exit HEX mode)
Hold down the FEED button in the shutdown state, and then press and hold the POWER button to power on, when you see the "ERROR" Red right is ON-OFF-ON then release the FEED button.		Switch the command between TSPL, CPCL and ESC/POS

### 5. Printer Driver Installation

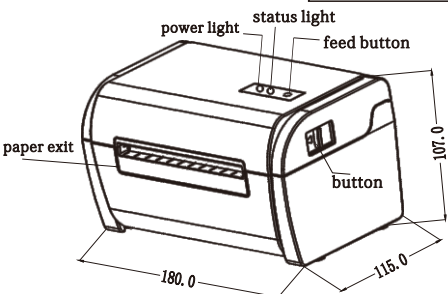
**Note: A printing software is required to be used with this driver**  
 Each machine has a factory equipped with a CD, open the CD and find the label printer driver - WINDOWS, then click it to install the driver.

1. The label printer driver is beginning to be installed. The first step is as below:

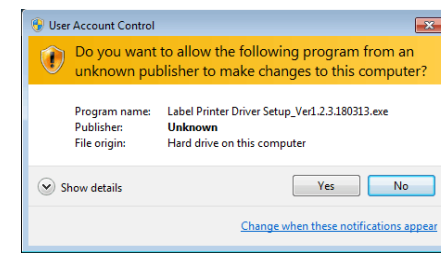
6



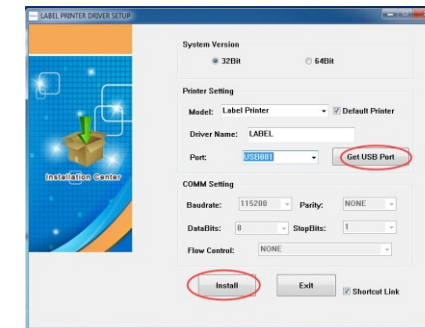
Size: 180\*115\*107mm  
weight: 860g



4



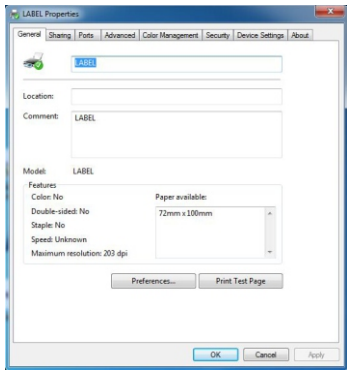
2. Please read the related terms carefully, and install it as agreement as below, then click "Next"



3. If the printer is USB interface, click the "Get USB Port" to automatically identify the USB port, other interfaces, click "Install Driver"

7

4. If Label printer driver installation is successful, it will automatically pop up printer properties interface as shown below:



Click "Print Test Page", if the printer prints a normal page, it indicates that the installation was successful.

Note: If the printer prompts "Printing Error", return to the "Port" option, select USB0001, or USB002, or USB003... and test it again.

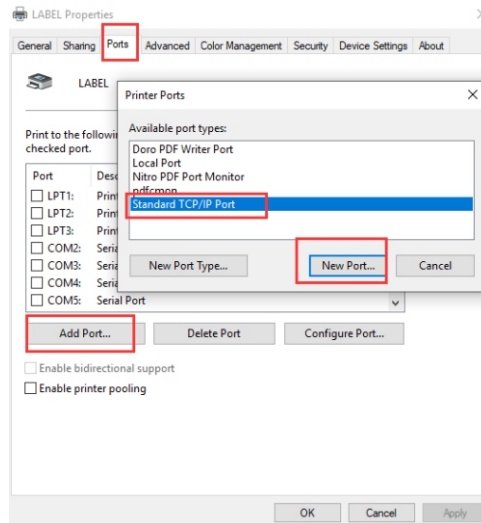
5. How to use the LAN port of printer

Get the local IP address from Self-test page. The method of printing Self-test page:

Hold down the FEED button in the shutdown state, and then press and hold the POWER button to power on, when you see the "ERROR" Red light is ON, then release the FEED button. You can get the IP address from the self-test page(Default IP address:192.168.1.100)

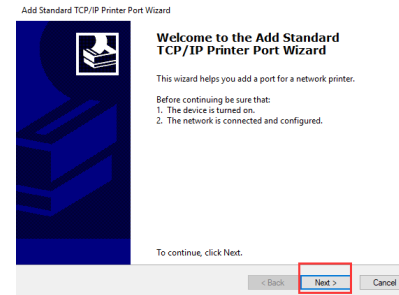
8

5.1 Open the printer properties interface and select "port", as shown in the figure below: Select "Add Port", as shown below:

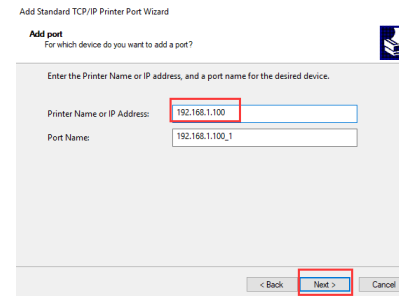


9

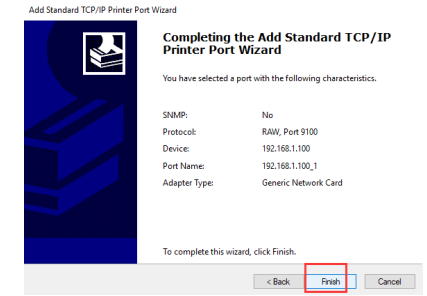
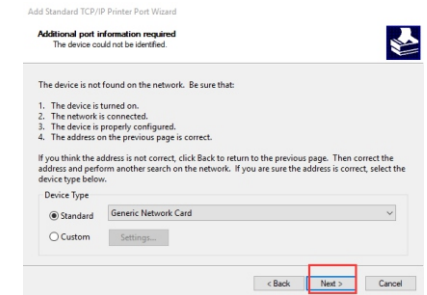
5.2 Select "Next", show as below:



10

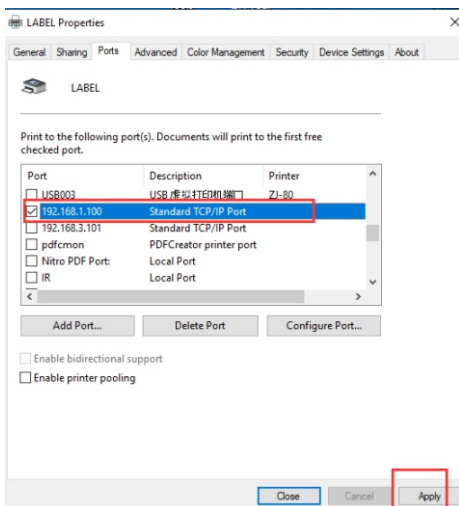


5.3 Select Standard "Generic Network Card" and Next:



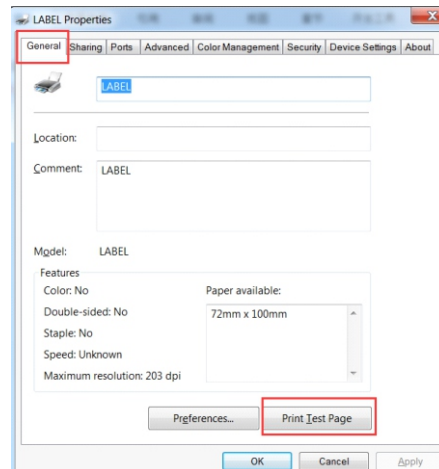
11

5.4 After "Finish", and then click "Apply":



12

5.5 You can click the "Print Test Page" to have a test :



13

If the printer prints a normal page, that means the LAN port can be used normally.

Note: if you need to modify the printer IP, you can refer to "CD" - "tools" - "Printer setting tools" file inside the IP setting method to set up; if it is a WIFI interface, you can refer to "CD" - "tools" - "WIFI setting tools" for relevant Settings.

## 6. Label Editing Software For Windows system

Open the CD with the CD-ROM drive, find the label editing software, and click Install.

## 7. Label Editing Software For Android&IOS systems

▶ Please make sure the printer can be supported Bluetooth connected.

7.1 If the connected device is Android system, please scan below QR code to download the Android editing software "Print Label":



Print Label  
Android editing software  
Install Password : 1234

14

7.2 If the connected device is IOS system, please scan below QR code or go to App Store to download the IOS editing software "Print Label":



Print Label  
IOS editing software

## 8. How to clean the printer head

Printer Cleaning:

When the printer has the following conditions, you should clean the printer head:

- 1.The printer does not print clearly and the thermal paper is Ok.
- 2.The printer Print pages lengthways is not clear
- 3.It's getting too noisy while feeding paper or printing.

**Printer head cleaning steps are as follows:**

1. Power off the printer and open the paper room cover. Remove the thermal paper roll.
2. If the printer just finished printing, please wait for the print head to cool down.
3. With a soft cotton cloth dipped in ethanol (please make sure there is no dripping), wipe the thermal printer head gently and remove any dust or stains.
4. Wait for the complete evaporation of any ethanol, then place the thermal paper roll back in the printer and close the paper room cover, then print a test page.

**Notes :**

1. When the printer maintenance must ensure that the power is shut down
2. Hands or other metal tools away from the surface of the printer head, do not use tweezers to scratch the surface of the printer head and other sensitive parts.
3. Do not use gasoline, acetone and other organic solvents for printer head cleaning.

15