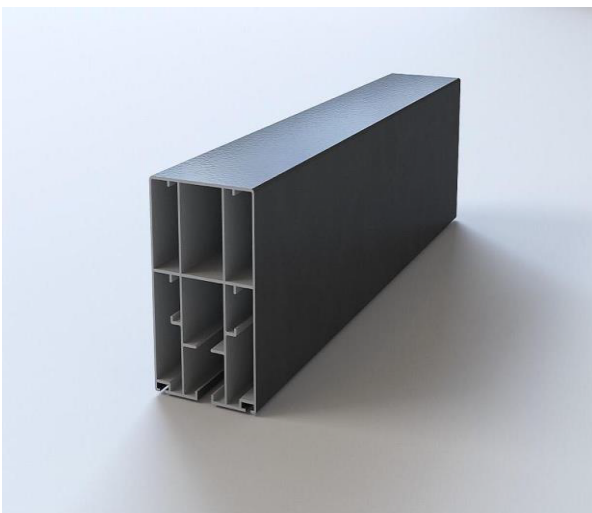


FRONT BEAM AND RAIN GUTTER

Height : 158.5 mm
Width : 176.4mm
Thickness : 2,2mm
Weight : 5.068 g/m

- ✓ Raw material :Aluminum T56063
- ✓ Water is discharged through a canal on rain gutter and this part provides durability to pergola



RAIL PROFILE

Height : 160 mm
Width :120 mm
Thickness : 1,9 mm
Weight : 7.216 g/m

- ✓ Raw material :Aluminum T56063
- ✓ Rail profile extends to 10.5 m without extra pillar
- ✓ Cylinder canals on profile prevent to flow water and air through pergola and fabric
- ✓ Rib in the canals enables to isolation





FABRIC PROFILE

Height : 48.45 mm
Width : 50 mm
Thickness : 1.3 mm
Weight :1.025 g/m 'dir.

- ✓ Raw material : Aluminum T56063
- ✓ The vertical rod in the medium of profile enables extend to 400cm without extra colons
- ✓ Gutter on the top of profile for leds



MAIN FABRIC PROFILE

Height : 55 mm
Width : 80 mm
Thickness : 1,7 mm
Weight : 1.268 g/m

- ✓ Raw material : Aluminum T56063
- ✓ Profile at front and back of pergola enables moving fabric





FRONT PILLAR

Height : 120 mm
Width : 130 mm
Thickness : 2 mm
Weight : 2.938 g/m

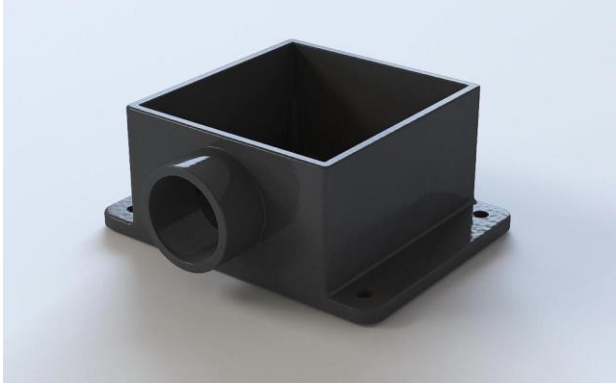
- ✓ Raw material : Aluminum T56063
- ✓ Profile at front part enables discharge water
- ✓ Profile mounted under rain gutter



CARRIER

- ✓ Carrier provides to move the fabric
- ✓ Raw material is special plastic and resists across broken very well
- ✓ Coated chrome
- ✓ Carrier runs silence and enables flowing perfectly





WATER DISCHARGE PART

- ✓ Raw material is a mold aluminium
- ✓ Enables water discharge and connect to ground

OTOMATION

- ✓ Otomation system is Somfy /Becker motors
- ✓ Motors are 120 nm
- ✓ Remote control
- ✓ No mixing with other radio frekans .(868 mhz)

FABRIC

- ✓ Serge Ferari ,block out
- ✓ Fabric 3 layers , no reflection light and unflammable
- ✓ PVC flexy fabric weight 620g/ m²
- ✓ Warranty 7 years

LIGHTINING

- ✓ Led lightining
- ✓ 3w Samsung and 1 piece per square
- ✓ Leds Samsung brand
- ✓ Easy assemble and usefull

