

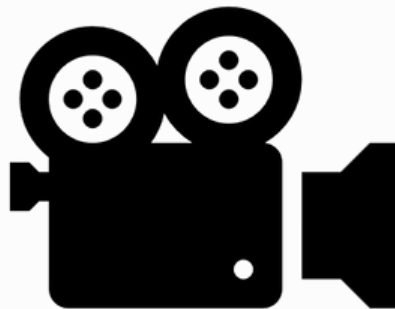


Booking Agent: Koketso Monnamme  
Contact or WhatsApp: 073 980 9315  
Email: [connect@arvideosza.com](mailto:connect@arvideosza.com)  
Cedar creek estate Needwood  
Fourways 2055

## GEAR PRICELIST

### INDEX

Page 2-3 cameras and lens kits  
Page 4 -6 lights and sound  
Page 7-8 tripods and gimbals  
Page 9-10 lenses and support



# Rent the Sony A7III with the 28-70mm lens



*R1150  
a Day*



## CAMERA INCLUDES

- 2x NP-FZ100 Rechargeable Battery
- 2x 128 GB SD card
- Sony FE 28-70mm f/3.5-5.6 OSS Lens
- camera bag
- throw in an external dual charger +R50



## Rent the popular Canon EOS R10 Mirrorless Camera Body with Canon EF to R Mount Adapter



*R800  
a Day*

### CAMERA INCLUDES

- 2X LP-E17 battery pack
- 1x 64GB SD card
- EF to R mount adapter
- 18-45mm kit lens



## Cameras and lens kits

**Sony alpha a7sii**  
**R1050.00 a day**  
**+ 4 x batteries**  
**+ 2 x dual battery charger**  
**+ 2 x 128 GB card**



**Canon R + 24-105mm RF kit lens**  
**+R1504.00 a day**  
**+2x battery and 1x charger**  
**+1x 128GB SD card**

**Canon 750d = 18-55mm EF-S**  
**R600.00 a day**  
**+ 2x battery + charger**  
**+ 1x 128GB**  
**+ EFS 18-55mm**



**Canon EOS R10 + 18-24mm lens kit**  
**R870.00. A day**  
**+2x battery**  
**+1x 128gb SD cards**

# Lights and sound



- Professional Boompole
- R100.00 a day
- Connector cable



- Rode video microphone
- +R150.00 a day
- +connector cable
- +1x deadcat



- Wireless GO II
- R320
- Dual Channel Wireless Microphone System
- Dual channel receiver and two transmitters



- 600A LED 3pt light kit
- R500.00 a day
- + light stands
- + light filters
- + plugs



- Godox SL-60W Video lights
- R600
- +2x lights
- +2x light stands
- +2x power cord
- 2x reflector



**Godox V1 round speed light  
for Sony  
R300.00 a day  
1x battery  
1x charger  
bag**

**GodoxTT685CII for canon  
+R250.00  
+4X AA batteries  
+bag**



**LED camera light  
R120 a day  
2x batteries  
1x charger**

**Speedlight square soft box  
R25.00 a day  
+bag**





**Gear Cam 1.8  
professional video tripod  
+ bag  
R380.00 a day**

**Lightweight photography  
tripod  
R95.00 a day**



**DJI ronin-s Pro kit  
R750.00 a day  
1x battery + charger  
Bag**

**Ronin SC2 Pro kit**  
**R680.00 a day**  
**1x battery + charger**  
**Bag**



**Camera slider + fuel head**  
**R240.00 a day**



**Camera shoulder mount/stabiliser**  
**R140.00 a day**



# Canon RF lenses



**Canon RF-S 18-45mm F4.5-6.3 IS STM Lens**  
R180 a day



**CANON RF 35MM F1.8 MACRO IS STM**  
R250 a day



**CANON RF 16MM F1.8 MACRO IS STM**  
R200 a day



**CANON RF 24-105 F4 MACRO IS STM**  
R300 a day



**CANON RF 85MM F2 MACRO IS STM**  
R300 a day

## **Lenses , batteries and support**

---

|                               |                |
|-------------------------------|----------------|
| <b>Sony FE 24-240 mm OSS.</b> | <b>R380.00</b> |
|-------------------------------|----------------|

---

|                            |                |
|----------------------------|----------------|
| <b>Sigma 85mm f1.4 ART</b> | <b>R300.00</b> |
|----------------------------|----------------|

---

|                          |                |
|--------------------------|----------------|
| <b>Samyang 50mm f1.4</b> | <b>R260.00</b> |
|--------------------------|----------------|

---

|                            |                |
|----------------------------|----------------|
| <b>Canon EF 50mm f1.8.</b> | <b>R100.00</b> |
|----------------------------|----------------|

---

|                                   |                |
|-----------------------------------|----------------|
| <b>Canon RF 85mm f2 macro STM</b> | <b>R350.00</b> |
|-----------------------------------|----------------|

---

|                                   |                |
|-----------------------------------|----------------|
| <b>canon 24-105mm RF lens kit</b> | <b>R300.00</b> |
|-----------------------------------|----------------|

---

|  |                |
|--|----------------|
| <b>Canon image stabiliser EF 75-300mm f4.0</b> | <b>R220.00</b> |
|--|----------------|

---

|  |                |
|--|----------------|
| <b>Canon image stabilizer 24-70mm USM F4</b> | <b>R400.00</b> |
|--|----------------|

---

|                                 |             |
|---------------------------------|-------------|
| <b>Canon EFS 18-55mm f4-5.6</b> | <b>R100</b> |
|---------------------------------|-------------|

---

|                                     |             |
|-------------------------------------|-------------|
| <b>Canon 18-135mm EF-S f3.5-5.6</b> | <b>R150</b> |
|-------------------------------------|-------------|

---

|                          |                |
|--------------------------|----------------|
| <b>Fuel head +slider</b> | <b>R200.00</b> |
|--------------------------|----------------|

---

|                                    |                |
|------------------------------------|----------------|
| <b>Sony A7 camera battery pack</b> | <b>R100.00</b> |
|------------------------------------|----------------|

---

|  |                |
|--|----------------|
| <b>Canon battery 5D/90D/R battery pack</b> | <b>R100.00</b> |
|--|----------------|

---

|                             |             |
|-----------------------------|-------------|
| <b>Canon battery charge</b> | <b>R100</b> |
|-----------------------------|-------------|

---

---

|   |             |
|---|-------------|
| <b>DJI ronin s battery</b>              | <b>R120</b> |
| <b>Sony 128GB card</b>                  | <b>R100</b> |
| <b>Sony 64GB card</b>                   | <b>R80</b>  |
| <b>Canon 128GB Lexar</b>                | <b>R100</b> |
| <b>NP-F light charger battery pack</b>  | <b>R150</b> |
| <b>GPB for Sony NP-550 battery pack</b> | <b>R120</b> |
| <b>SanDisk card reader</b>              | <b>R100</b> |
| <b>Black and white 6x6 backdrop</b>     | <b>R500</b> |
|   |             |
|   |             |

---