

Candidate Endorsement Recommendations

President of the United States

Kamala Harris

Vice President of the United States

Tim Walz



US Congress

Washington District 6

1. Emily Randall- Endorse
2. Drew MacEwen- Interviewed



Washington District 10

3. Marilyn Strickland- Endorse
4. Don Hewett- Interviewed



State of Washington

Lieutenant Governor

5. Denny Heck- Endorse
6. Dan Matthews- Did not respond



Attorney General

7. Pete Serrano- Did not respond
8. Nick Brown- Endorse



Treasurer

9. Mike Pellicciotti- Endorse
10. Sharon Hanek- Did not respond



Auditor

11. Matt Hawkins
12. Pat McCarthy- Endorse



Superintendent of Education

- 13. Chris Reykdal- Endorse
- 14. David Olson- Interviewed



Legislative District 25

State Senator

- 15. Chris Gildon- Did not respond
- 16. Kenneth King- Endorse



State Representative, Position 1

- 17. Cameron Severns- Endorse
- 18. Michael Keaton- Did not respond



State Representative, Position 2

- 19. Cyndy Jacobsen- Did not respond
- 20. Shellie Willis- Endorse



Legislative District 26

State Representative, Position 2

- 21. Tiffany Mitchell- Endorse
- 22. Michelle Caldier- Did not respond



Legislative District 27

State Senator

- 23. Yasmin Trudeau- Endorse
- 24. Carol Sue Braaten- Interviewed



State Representative, Position 2

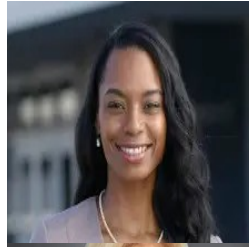
- 25. Jake Fey- Endorse
- 26. Devin Rydel Kelly- Interviewed



Legislative District 28

State Senator

- 27. T'Wina Nobles- Endorse
- 28. Maia Espinoza- Did not respond



State Representative, Position 1

- 29. Mari Leavitt- Endorse
- 30. Gabe Sachwitz- Did not respond



State Representative, Position 2

- 31. Dan Bronoske- Endorse
- 32. Mark Herr- Did not respond



Legislative District 29

State Representative, Position 1

- 33. Melanie Morgan- Endorse
- 34. Richard Miller- Interviewed



Legislative District 31

State Representative, Position 2

- 35. Joshua Penner- Did not respond
- 36. Brian L. Gunn- Endorse



Pierce County

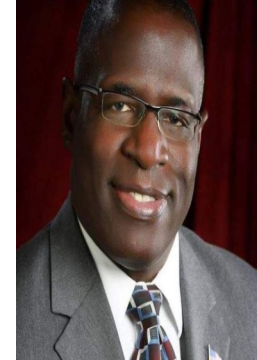
Executive

- 37. Kelly Chambers- Interviewed
- 38. Ryan Mello- Endorse



Assessor-Treasurer

- 39. Marty Campbell- Interviewed
- 40. Kent Keel- Endorse



Sheriff

- 41. Keith Swank-Interviewed
- 42. Patti Jackson- Endorse



Council- District No. 2

- 43. Paul Herrera- Did not respond
- 44. Davida Haygood- Endorse



Council- District No. 3

- 45. John Linboe- Endorse
- 46. Amy Cruver- Did not respond



Council- District No. 4

- 47. Rodney Robinson- Did not respond
- 48. Rosie Ayala- Endorse



Council- District No. 6

- 49. Loujanna LJ Rohrer- Responded after deadline
- 50. Jani Hitchen- Endorse



Judicial - Supreme Court

Justice Position No. 2

- 51. Todd A. Bloom- Did not respond
- 52. Sal Mungia- Endorse



Judicial- Pierce Superior Court

Judge, Position 01

- 53. TaTeasha Davis- Endorse
- 54. Paul Robson- Did not respond



Judge, Position 04

- 55. John Cummings- Endorse
- 56. Rebecca Reeder- Interviewed



Judge, Position 09

- 57. Doris Walkins- Endorse
- 58. Scott Peters- Interviewed



Judge, Position 10

- 59. Camille Schaefer-Interviewed
- 60. Philip Thornton- Endorse



Judge, Position 15

- 61. Brian Wasankari- Interviewed
- 62. Ingrid McLeod- Endorse

