

Northwest Georgia Invitational Raider Meet

MEMORANDUM OF INSTRUCTION for the Northwest Georgia Invitational Raider Meet on 14 October 2023 at Camp Sidney Dew 3624 Everett Springs Road SW, Armuchee, GA 30105.
<https://www.nwgabsa.org/sidneydew>

GENERAL INFORMATION:

1. This event is a state qualifier for Georgia JROTC Areas 7 and 10. Please send correspondence to all three emails since this is a joint effort at a neutral site. jerry.queen@bartow.k12.ga.us
2. Entrée Fee is **\$125 per school. Due to the nature of this meet, entry fees must be paid prior to 8 October. You will be able to mail you entry fee or pay it at Raiders Meets to be named at a later date.** Schools can have a maximum of three teams not to exceed one team per division.
3. **RSVP with an email as soon as possible with your projected teams that will be competing. This will be a big help for planning purposes.**
4. There will be a brief coaches and team commanders' meeting that will take place at 0800 near the operations center by the parking area. The LOI is your briefing, so if you have question please ask. The first event will be the Team Run and will begin at approximately 0830. **Please refer to the EVENT MAP in Annex E**
5. The awards ceremony will be held near the parking area shortly after the conclusion of the competition.
6. Awards will be given to the top three in each event (streamers) and top three overall (trophies and streamers). Also, trophies will be awarded to the top three overall in Area 7 and Area 10.
7. Please park in designated parking areas only. See event map Annex E
8. Concession stand will be open.
9. Event T-Shirts and other JROTC items will be available for purchase by a local vender.

SPECIFIC INSTRUCTIONS:

1. When you arrive, Instructors must check in at the registration room. You will verify your teams, make any payments that are owed, turn in your "**Covenant Not to Sue**" form found in (Annex C), and be given a packet with a rotation matrix for your school and wrist bands for each team. **Covenant Not Sue forms are mandatory because we are competing on a scout camp.**
2. Each team will consist of **12 members**, but only 10 will be allowed to compete in any one event. **Competing cadets will only be allowed to compete on one team only**; meaning a cadet on the male team cannot be a substituted for a cadet on the mixed team.

3. Mixed teams must have a minimum of four females competing in each event and can have up to nine females competing to be considered a mixed team.
4. **Brief cadets on taking care of equipment.** Dropping rucks, litters, water cans, etc. can damage equipment and cause an event to get behind. Penalties will be rewarded for neglecting equipment.
5. Judges will brief teams clearly before each event. Penalties will be clearly defined. After the completion of the event, the team commander will go to the judge for the final time and notification of any penalties assessed. Do not argue with the judge. All concerns should be addressed to the event OIC/NCOIC.
6. **Instructors are encouraged to validate times with judges immediately after the event** prior to the team commander signing the scoresheet.
7. Teams will be given a round robin schedule matrix with report times to each event. Please follow the matrix you are given to prevent bottlenecking at longer events. If a team or school decide not to compete in an event, please inform the scoring room to prevent a frantic search at the end of the day for a missing scoresheet that doesn't exist.
8. Unsportsmanlike conduct, such as profanity, will be subject to a one-minute penalty each time a member of a team does not conduct themselves as a JROTC cadet. The judge also has the authority to disqualify a team for unsportsmanlike conduct, to include the actions of team coaches and parents. Once again, if you have a concern, contact the event OIC/NCOIC.
9. Teams must follow signs and/or trail guides to stay on the course. If a team leaves the designated course they will be disqualified. Part of each event is attention to detail. All courses will be CLEARLY marked so this should not be a problem.
10. There will be a certified EMT onsite. In the event of an injury notify a judge, instructor or any cadet in an orange or yellow vest and the EMT will be dispatched to the site of the injured person. Only dispatch the EMT in case of an emergency. The EMT is not here to hand out band aids.
11. Camp Sidney Dew Scouting Base is located at 3624 Everett Springs Road SW, Armuchee, GA 30105, just outside of Calhoun, approximately 60 miles north of Marietta, GA and 40 miles south of Chattanooga, TN. Camp website: <https://www.nwgabsa.org/sidneydew> . The camp is approximately 20 minutes from the nearest grocery store or fast-food establishment, so plan accordingly.
12. Camp Sidney Dew offers numerous opportunities for teams that want to camp overnight Friday or Saturday. Website for reservations. <https://forms.nwgabsa.org/view.php?id=8856129> . Please contact the camp for more info on required camping gear
13. Lunch meals through the concession stand can be reserved in advanced for \$5 each. Burger or Hot Dog, Chips, Cookie, and a drink. Contact Col. Dickerson or LTC Moore

WEATHER INFORMATION: See Annex D for Evacuation Plan

1. **Weather:** Hot Temperatures could be a factor for this competition. Each team should bring their own water and ice. **Ensure all cadets start hydrating 2 days prior to the competition.**
2. **Lighting:** Lightening or Severe weather will stop the competition, however, if rain should take place throughout the competition day, the competition will continue with safety as our top priority.

COMPETITION EVENTS:

1. **Team Run:** First event of the day for all teams. The team run will be approximately 2.5 miles around the scouting base mostly on a compacted gravel road. Uniform will be ACU/OCP trousers, team shirt and running shoes. Boots can be worn but are not recommended. This will be the first event of the day for all teams. See an overview of the run route in **Annex F**.
2. **Cross County Rescue:** The course length will be approximately $\frac{3}{4}$ mile over hilling uneven terrain. See an overview of the course in **Annex G**. Each team will have a litter and four rucks. Male and Mixed litter 120 lbs., Female litter 100 lbs. All rucks will be 35 lbs. Uniform will be ACU/OCP trousers with boots.
3. **Boat Race:** Each Raider team will put 10 Raiders in an RB-15 Rubber Boat with 10 paddles. Teams will start at the dock inside the boat. On the command go, teams will paddle around two buoys in an oval path approximately 100-200 meters back to the dock. Each team will be individually timed. Each Raider will have a life vest on.
4. **Physical Team Test (PTT):** The entire course is approximately 600 yards. All TEN team members will start at once. Obstacles will include Equipment Carry, a six-foot wall male teams and four-foot wall for mixed and female teams, a maze, and a canoe carry. Uniform will be Team T-shirt, ACU/OCP Trousers with boots. (see **ANNEX H**)
5. **Tire Flip:** This is the standard tire flip event. Cadets will divide into two 5-person teams. The tire will be positioned on the start/finish line between two cones. When instructed to begin, the first team will begin to flip the tire 50 yards. The entire tire must be across the line before the 2nd team flips the tire back to the other side of the course. All 5 team members must touch the tire while it is being flipped. The tire cannot be rolled, pushed, or dragged. The tire must stay between the designated left and right boundaries, which the tire may not touch. At the finish line, the tire must be completely flipped past the start/finish line between the two cones. Time will be stopped once the tire is rested fully behind the start/finish line. To prevent an injury caused by the tire coming down on a lower leg or foot, no Cadet can be ahead of the “pivot point” once the team begins each lift. The pivot point is defined as the point of the tire contacting the ground once a team begins the lift of the tire for each flip. Refer to the Tire Flip Score sheet for additional guidance. Uniform for Tire Flip: Uniform will be team T-shirt, ACU/OCP Trousers, and boots
6. **Rope Bridge:** Reference FM 3-97.61, TC 90-6-1 (Military Mountaineering-2002) and the 6th Brigade MOI. Follow this MOI and the attached score sheet (**Annex A**) for rope bridge competition penalties and details pertaining to the Raider Rampage Raider Meet. Below are some basic guidance for common conflicting methods for constructing a rope bridge. Please note the items in **bold**. These are in no particular order. **Refer to Rope Bridge Score sheet for additional guidance.**
 - a) All team members and equipment must start behind the nearside anchor point. **Rope can only be placed in a bag. NO laying rope out.**

“Train Today, Lead Tomorrow”

- b) The event will be over a creek that is ankle to knee deep, possible waist deep depending on rain. Teams will need to have a 150 foot rope minimum. **Helmets are required for this event.** The event will provide helmets if your school does not have them.
- c) Distance between anchor points is 75-90 feet for all teams. Teams will only get one shot at completing the Rope Bridge. No redo's.
- d) If a Cadets back touches the ground or water while crossing, they **will not** be penalized. If their feet or hands touch they will be penalized **if the judge deems they are pushing off to gain an advantage.**
- e) Aussie Seats and Swiss Seat refer to the FM and TC. (square knot with overhand knots w/ 4" pig tails). Knots will only be inspected for safety.
- f) The Far-Side Raider ties an end of the line bowline **w/overhand knot** or figure 8 and snaps in before crossing into the (dead zone) and is **belayed across the dead zone** (no figure 8 across the body). Belaying means someone is controlling the rope in both hands and watching the raider cross.
- g) **The near-side construction;** A wireman's knot or figure 8 slip knot on a bite is the only authorized transport Tightening System. Snap links or a stick can be used to aid in the disassembly of the knots. The snap-links or stick may not be used as speed tighteners. Be prepared to tie your near or far side knot after your rope bridge is complete should the judge request it.
- h) Once the transport knot is complete it **must be connected back to the bridge rope with a steel snap link. Steel link must be locked.** If you don't have a steel snap link we can provide one.
- i) **The far-side construction** must be secured **with two round turns and two half hitches** with or without a quick release or; a **tensionless anchor knot** minimum of 4 wraps around far-side anchor.
- j) The transport tightening system is secured to the anchor using two round turns and two (2) half hitches with or without a quick release. Either way it must have a 4 inch pig tail. The half hitches do not have to pass around all ropes between the anchor point and the wireman's knot or figure 8 on a bite. No raider can be snapped in to the one rope bridge until the construction is complete.
- k) Near Side Raider disassembles the transport system on the near-side. He/she can tie a bowline **w/overhand knot**, a figure eight in the end of the bridge rope or use the existing Wireman's or Figure 8 loop and secures the snap-link on his/her waist harness. **The Near Side Raider is then belayed across the obstacle by Raiders on the far-side.**
- l) As long as the Raider belaying has two hands on the rope and is looking at the near and far side raider cross the dead zone no penalties will be assessed.

Annex A: Rope Bridge Scoresheet

SCHOOL:	MALE 1 2 3 FEMALE MIXED 1 2		
ROPE BRIDGE SCORE SHEET	Time Per Penalty	# of Penalties	Total
EQUIPMENT/PREPARATION/INSPECTION: 5 MINUTES.			
Improper Aussie Seats on far and near side raiders. (on the spot fix)	NP		
Improper SWISS SEAT; Snap link must surround all ropes and when rotated to the "UP" position, gate opening is "away from Raider" (on the spot fix)	NP		
Rope improperly laid out. (Back laid in pile, coiled or IN A BAG) (fix before start)	NP		
CONSTRUCTION OF ROPE BRIDGE			
Far Side Raider –Improper Bowline w/bite or Figure 8 when crossing	30 SEC		
Far Side Raider not clipped in with snap link prior to entering dead zone (VERIFY)	30 SEC		
Far Side Raider not belayed properly across the dead zone	15 SEC		
Dead zone violation (touching obstacle during loading/unloading, equipment dropped)	15 SEC		
Far Side anchor knot not two round turns w/2 half hitches or tensionless anchor	1 MIN		
Improper Transport Knot: wireman's knot or figure 8 knot with a bite	1 MIN		
Near-side not secured w/round turn, 2 half hitches with or without quick release	1 MIN		
Opening gates not opposite (if using two steel snap links)	15 SEC		
Two half hitches on near side knot are not between the anchor point and steel snap link	30 SEC		
CROSSING			
Any Raider hooked up before near side or far side is complete	15 SEC		
More than three (3) Raiders clipped into the bridge rope at any one time	30 SEC		
Dead zone violation (touching obstacle during loading/unloading, equipment loss)	15 SEC		
Crossing Raiders FEET or HANDS touch the dead zone to gain an advantage	30 SEC		
BREAKDOWN OF ROPE BRIDGE			
Breaking down rope bridge before last cadet is off rope	30 SEC		
Near Side Raider not clipped in with snap link prior to entering dead zone	30 SEC		
Near Side Raider not belayed properly across the obstacle	15 SEC		
Near Side Raider bowline w/overhand safety or figure 8 incorrect while crossing	30 SEC		
Rope or any item left in the dead zone after time is called	15 SEC		
Knots or snap links left in the rope after bridge break down and "TIME" is called	30 SEC		
ADDITIONAL PENALTIES AND NOTES			
Improper markings on rope that are obviously an advantage (cheating)	DQ		
Coaching from a non-team member (warning before penalty)	1 Min		
Rope Bridge Failure	DQ		
Use of Speed Tighteners (do not twist snap-links)	30 SEC		
LESS THAN 8 Raiders CROSS ON BRIDGE	DQ		
Sportsmanship violation (profanity, disrespecting judge, etc)	30 SEC / DQ		

TIME	
PENALTIES	
FINAL TIME	

Judge Signature: _____

Annex B: North Georgia Invitational Raider Meet Registration Form

ANNEX B

School Name _____

POC (Please Print) _____

POC Contact Number _____

Total number of teams (maximum of 3): _____

Teams per category: Male Teams _____ (limit 1)

Mixed Teams _____ (limit 1)

Female Teams _____ (limit 1)

Total Amount Due _____ (\$125)

Amount Enclosed: _____ (Make checks payable to: Adairsville JROTC)

Signature of POC: _____

Mail checks and forms to: Adairsville High School
Attn: JROTC Department
519 Old Hwy 41
Adairsville, Ga. 30103

Annex C: COVENANT NOT TO SUE

Statement Required by Privacy Act of 1974

1. Authority: Title 10, US Code 2102

2. Principle Purpose(s): To release the U.S. Government – US Army JROTC, Northwest Georgia Boy Scouts of America Council, and the 6th ROTC Brigade from liability for injury, death, or damages for JROTC cadets participating in voluntary off-campus training programs.

3. Routine Uses: Normal personnel actions. Disclosure of information may be provided to proper authorities in actions regarding law enforcement, legal actions as a result of injury or death, investigations of accidents resulting from such voluntary off-campus training.

4. Mandatory or voluntary disclosure and effect on individual not providing information: Disclosure is voluntary. Failure of the individual to complete this form will disqualify the JROTC cadet from participating in specific voluntary off-campus training.

I (parent or guardian), _____, residing at _____
(Type or Print Full Name) (Street Address)
_____, (_____) _____
(City, State, Zip) (Area Code – Phone#)

do hereby agree that in consideration for being allowed to participate in the JROTC Raider Competitions conducted by Army JROTC Instructors, 6th Brigade ROTC, US Army Cadet Command, an U.S. Army JROTC supervised activity, and whereas I am doing so entirely on my own initiative, risk and responsibility; and being fully aware of the risks adhering to this type of training, I hereby RELEASE AND DISCHARGE FOREVER, the United States Army, the State of Georgia, Northwest Georgia Boy Scouts of America Council and all of its officers, agents, and employees, acting officially or otherwise, from any and all claims, demands, actions, or cause of action, on account of myself or on account of any injury to me which may occur from any cause during said activity or continuances there of; and I do further covenant and agree to hold the said Government of the United States –U. S. Army JROTC and its officers, agents, and employees blameless for any and all damage which I may cause either intentionally or through my negligence.

(Signature of Parent/Guardian)

(Signature of Cadet Participating)

(Type/Print Name of Parent/Guardian)

(Type/Print Name of Cadet)

(Relationship to Cadet)

(Age/Period Covered)

(Date of Signature)

(Witness)

Annex D – Evacuation Plan

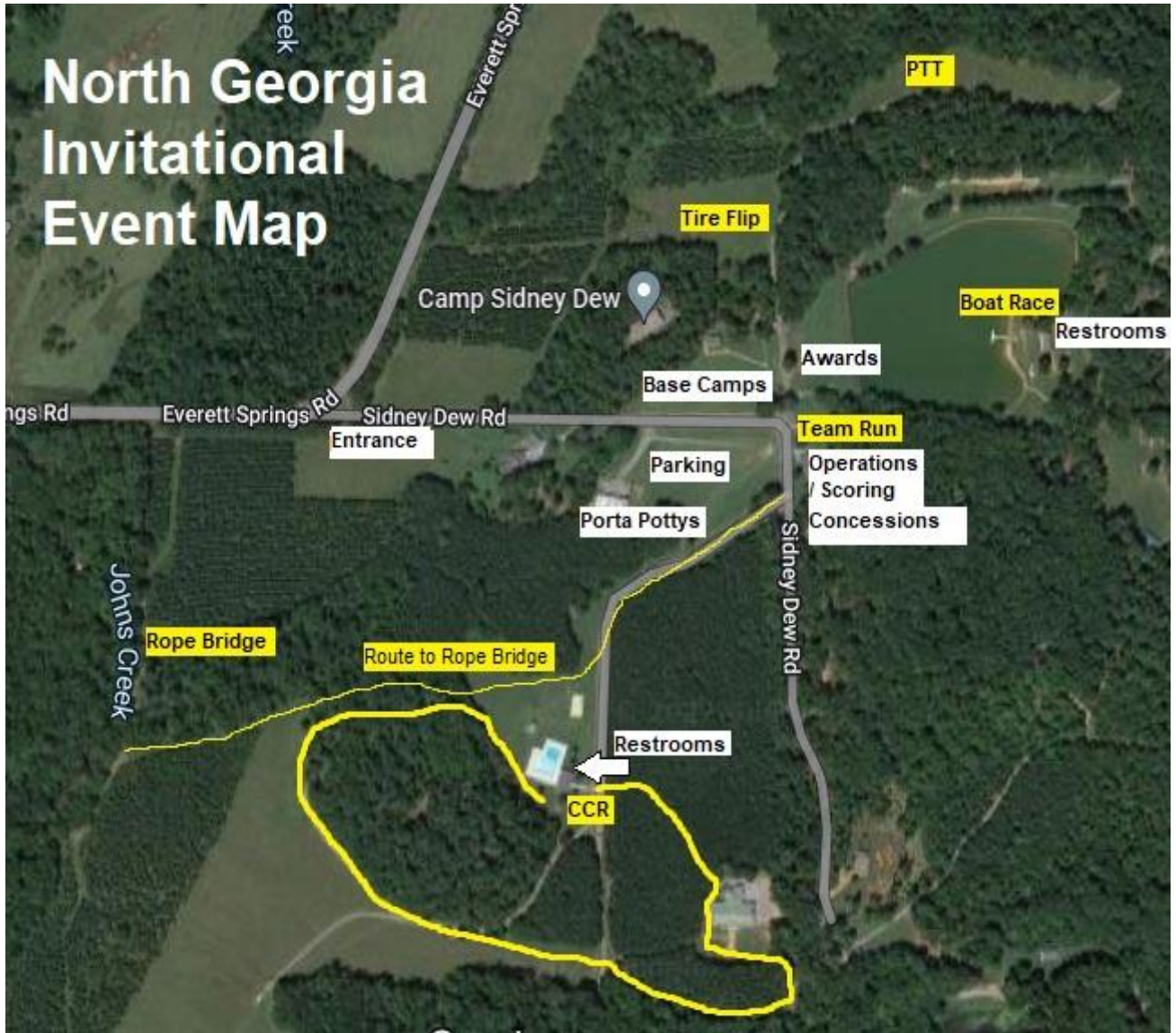
North Georgia Invitational Raider Meet Evacuation Plan

Purpose: Annex D – Detail evacuation plan of raider meet site if required due to lightening or man-made threat

Scope: MOI provides the procedures to be emplaced, heightening the safety for all attendees with regards to:

- a. Inclement weather such as lightening in the area
 - b. Man-made threat
1. The following evacuation procedures will be briefed and utilized for the meet:
 - a. Lightening – If lightening is determined to be within 6 miles of the meet, the host will sound an air horn to gain the attention of all participants and spectators. Via megaphone, the host will inform all attendees of the lightening threat and direct them to immediately return to their POVs/busses. For events occurring outside of the megaphone range, the host will notify the event support personnel via radio to stop all competition and have the competitors on the lanes to immediately return to their vehicles. Host will announce all clear to the attendees once the lightening storm is a safe distance away.
 - b. Man-made threat – If there is a situation in which there is a perceived or actual man-made threat (ie: bomb threat, person carrying a weapon, etc), the host will sound three blasts on the air horn and then notify the attendees of the threat, location and direction they are to immediately evacuate to distance themselves from the threat. The host will also contact 911 for police assistance

Annex E- EVENT MAP



Annex F- TEAM RUN ROUTE



Annex G - CCR ROUTE

North Georgia Invitational CCR Map: Course is approximately 6/10th of a mile. From the start line to the Dinning Facility, it is uphill (see orange color). The course is flat and downhill from the Dinning Facility to the last major turn. From there it is uphill until they reach the open field behind the swimming pool for the final 100 yards (see orange color).



Annex H – Physical Team Test

