

# Haralson County High School Raider Meet

**MEMORANDUM OF INSTRUCTION for the Haralson County Raider Meet** on 28 September 2024 at Haralson County High School 1655 Georgia Hwy 120, Tallapoosa, GA 30176.

## GENERAL INFORMATION:

1. This event is NOT a state qualifier for Georgia JROTC Areas 7 and 10.  
Anthony.hardy@haralson.k12.ga.us
2. Entrée Fee is **\$100 per school. Due to the nature of this competition, entry fees must be RECEIVED prior to 7 September 2024. Mail your entry fee to the address below or pay in person if we are attending a meet leading up to this event. Mail to:**

**Haralson County High School JROTC Department  
Attn: LTC Hardy  
Haralson County Raider Competition  
Hwy 120  
Tallapoosa, GA 30176**

3. Additional teams can be added for an additional \$25.
4. There will be a brief coaches and team commanders' meeting that will take place at 0730 in the operations center in the JROTC Building. The LOI is your briefing, so if you have question please ask. The first event will be the Team Run and will begin at approximately 0845. **Please refer to the EVENT MAP in Annex E**
5. The awards ceremony will be held on the practice field in front of the JROTC Building shortly after the conclusion of the competition.
6. Awards will be given to the top three in each events (1<sup>st</sup> & 2<sup>rd</sup> trophies and 3<sup>rd</sup> place medals).
7. Please park in designated parking areas only. (Bus and POV) See event map (**Annex E**)
8. Concession stand will be open outside the JROTC building. HCHS cadets, National Guards personnel and graders will be provided tickets for lunch.

**COMPETITION EVENTS: The timelines and events are listed below:**

- **0700: Arrival and Registration ( Operation Center)**
- **0800: Coaches and Team Captains meeting ( Operation Center)**
- **0815: Judges meeting (Operation Center)**
- **0845-0930: Team Run**
- **0930-1545: CCR, Tire Flip, The Beast, Rope Bridge, and the Raider Fitness Test**
- **1630: Award Ceremony (Practice Football Field Facing the operation Center)**

## **Annex Outline**

- 1. Annex A – Team Run**
- 2. Annex B – Registration**
- 3. Annex C – Covenant Not To Sue**
- 4. Annex D – Evacuation Plan**
- 5. Annex E – Event Map**
- 6. Annex F – CCR**
- 7. Annex G – The Beast**
- 8. Annex H – RFT**
- 9. Annex I – Tire Flip**
- 10. Annex J – Rope Bridge**
- 11. Annex K – Operations Center**

# Annex A- TEAM RUN ROUTE

**Team Run: Annex A:** First event of the day for all teams. The team run will be approximately 2.5 miles mostly on a compacted gravel road.

Time starts on the Judges signal. Time stops when final runner crosses the finish line.

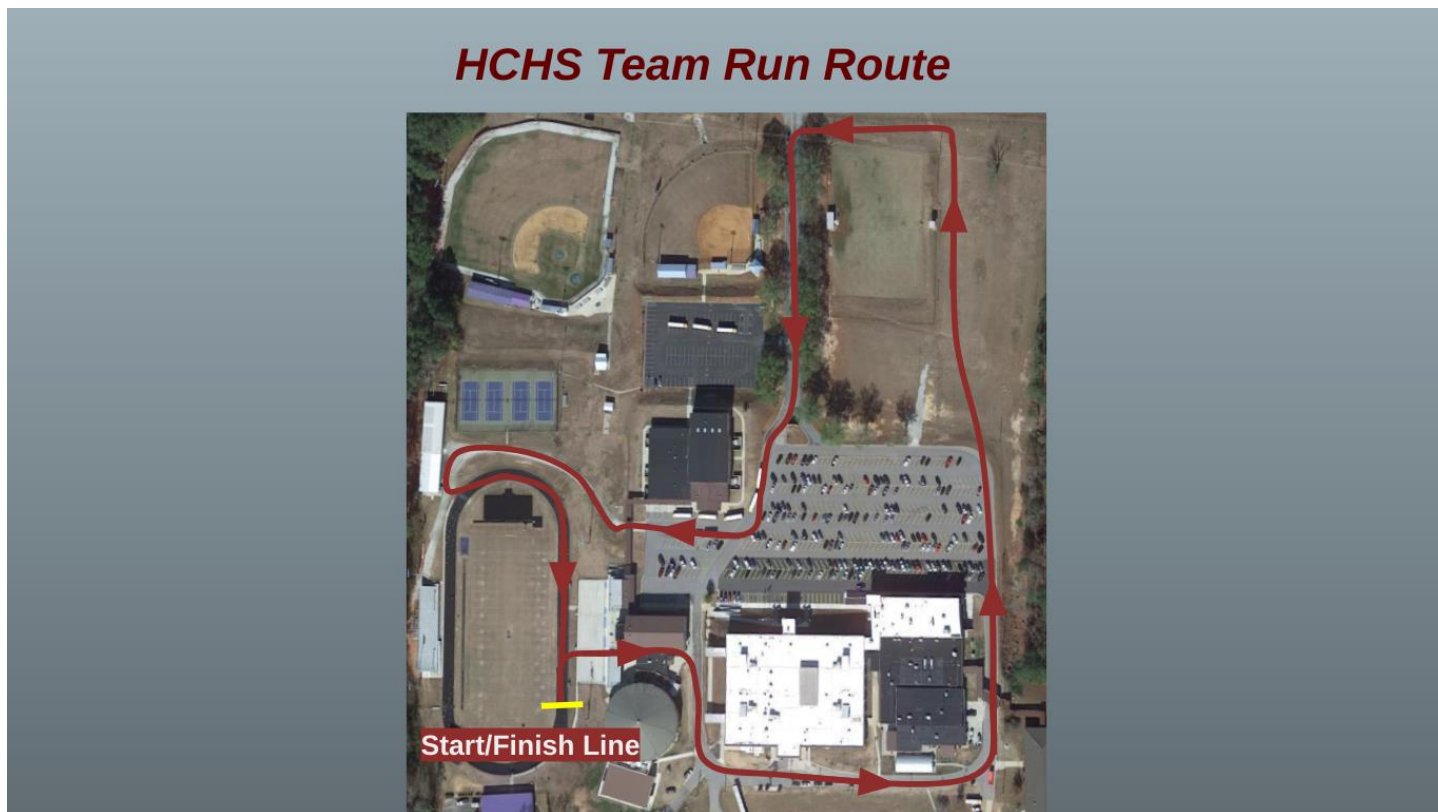
Uniform will be ACU/OCP trousers, team shirt and running shoes. Boots can be worn but are not recommended. See an overview of the run route.

The team run will be a **distance of 1.5 mile on the HHS track.**

The first laps will be on the inside lane.

When schools arrive with multiple teams, the fastest team will go first then their next team.

1. Position road guard at the end of the road at 8:30 am. **See Annex A.**
2. Road guards and signs will be position along the route.
3. Each team will have an assigned number for their teams.
4. All cadets not running, and spectators must remain off the track, behind the fence or in the bleachers.
5. All runners will run along the wood line next to the tent city. A line will be painted on the ground with white paint.



# Annex B: Haralson County Raider Meet Registration Form

ANNEX B

School Name \_\_\_\_\_

POC (Please Print) \_\_\_\_\_

POC Contact Number \_\_\_\_\_

Total number of teams (maximum of 3): \_\_\_\_\_

Teams per category: Male Teams \_\_\_\_\_ (limit 1)

Mixed Teams \_\_\_\_\_ (limit 1)

Female Teams \_\_\_\_\_ (limit 1)

Total Amount Due \_\_\_\_\_ \$125.00

Amount Enclosed: \_\_\_\_\_ (Make checks payable to: Haralson County (JROTC))

Signature of POC: \_\_\_\_\_

Mail checks and forms to: Haralson County High School  
Attn: JROTC Department  
1655 Georgia Hwy 120  
Tallapoosa, Ga. 30176

]

# Annex C: COVENANT NOT TO SUE

Statement Required by Privacy Act of 1974

1. Authority: Title 10, US Code 2102
2. Principle Purpose(s): To release the U.S. Government – US Army JROTC, Haralson County High School, and the 6<sup>th</sup> ROTC Brigade from liability for injury, death, or damages for JROTC cadets participating in voluntary off-campus training programs.
3. Routine Uses: Normal personnel actions. Disclosure of information may be provided to proper authorities in actions regarding law enforcement, legal actions as a result of injury or death, investigations of accidents resulting from such voluntary off-campus training.
4. Mandatory or voluntary disclosure and effect on individual not providing information: Disclosure is voluntary.

Failure of the individual to complete this form will disqualify the JROTC cadet from participating in specific voluntary off-campus training.

I (parent or guardian), \_\_\_\_\_, residing at \_\_\_\_\_  
(Type or Print Full Name) (Street Address)  
\_\_\_\_\_, (\_\_\_\_\_) \_\_\_\_\_  
(City, State, Zip) (Area Code – Phone#)

do hereby agree that in consideration for being allowed to participate in the JROTC Raider Competitions conducted by Army JROTC Instructors, 6<sup>th</sup> Brigade ROTC, US Army Cadet Command, an U.S. Army JROTC supervised activity, and whereas I am doing so entirely on my own initiative, risk and responsibility; and being fully aware of the risks adhering to this type of training, I hereby RELEASE AND DISCHARGE FOREVER,

# Annex D – Evacuation Plan

## WEATHER INFORMATION: See Annex D for Evacuation Plan

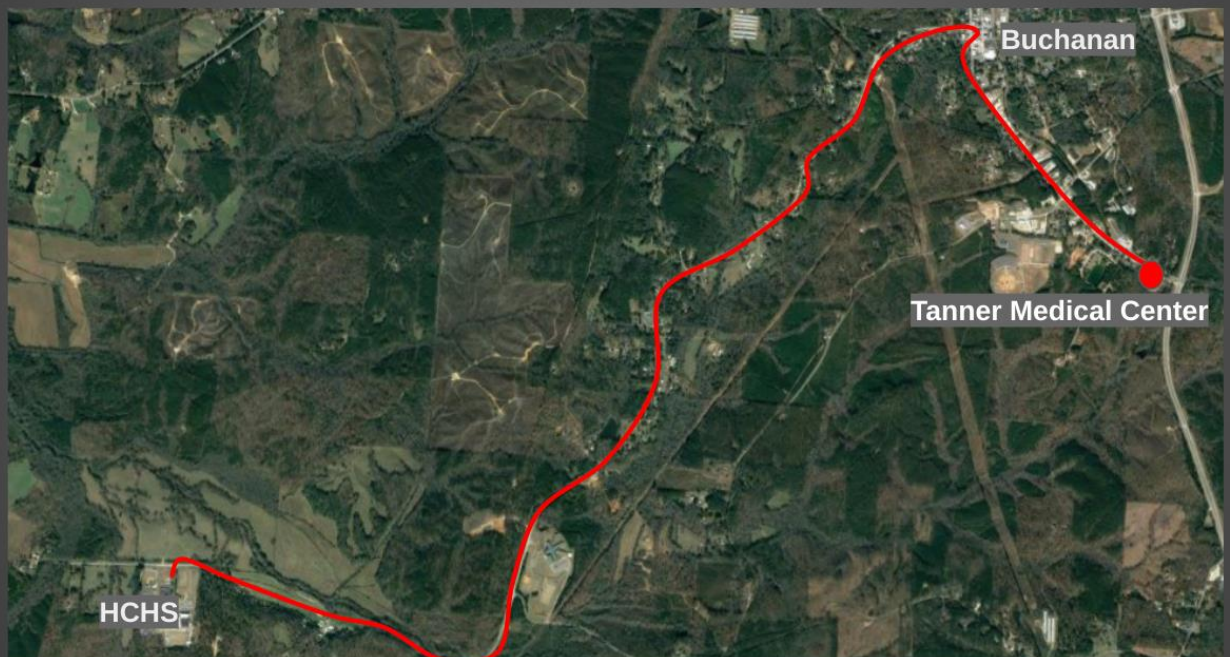
### Haralson County High School Raider Meet Evacuation Plan

Purpose: Annex D – Detail evacuation plan of raider meet site if required due to lightening or man-made threat

Scope: MOI provides the procedures to be emplaced, heightening the safety for all attendees with regards to:

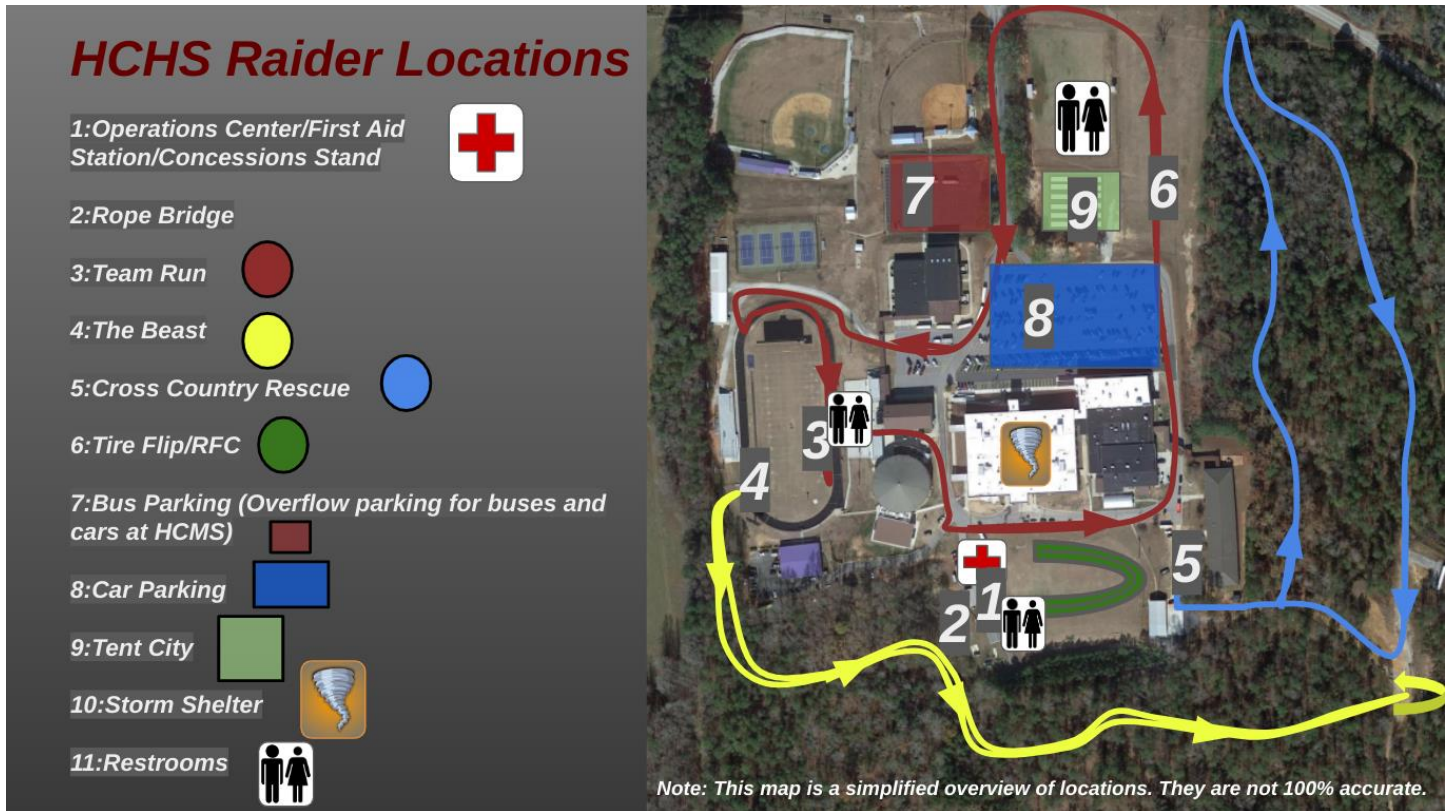
- a. Inclement weather such as lightening in the area
  - b. Man-made threat
1. The following evacuation procedures will be briefed and utilized for the meet:
    - a. Lightening – If lightening is determined to be within 6 miles of the meet, the host will sound an air horn to gain the attention of all participants and spectators. Via megaphone, the host will inform all attendees of the lightening threat and direct them to immediately go to the gyms. For events occurring outside of the megaphone range, the host will notify the event support personnel via radio to stop all competition and have the competitors on the lanes to immediately return to their vehicles. Host will announce all clear to the attendees once the lightning storm is a safe distance away.
    - b. Weather: Hot Temperatures could be a factor for this competition. Each team should bring their own water and ice. Ensure all cadets start hydrating 2 days prior to the competition.
    - c. Man-made threat – If there is a situation in which there is a perceived or actual man-made threat etc.: bomb threat, person carrying a weapon, etc.), the host will **sound three blasts on the air horn** and then notify the attendees of the threat, location and direction they are to immediately evacuate to distance themselves from the threat. The host will also contact 911 for police assistance

## *HCHS Medical Emergency Route*





# Annex E- EVENT MAP



## Annex F - CCR ROUTE

**Cross County Rescue (Blue Route):** The course length will be approximately 1.5 mile over hilling uneven terrain. Each team will have one litter and one rucks. Male and Mix litters 100 lbs., Female litter 50 lbs. All rucks will be 25 lbs. Uniform will be ACU/OCP trousers with boots. Each team will have to go over a 4' Foot Wall, 2 Tire Steps, two 10' Foot Wall, and 4 Hang tire, 4Stud Walk, and 4 log Walk. **The Litters and rucks will not go over any walls.** All members on your 10 men team will go over obstacles. After going over the obstacles than they will pick equipment and continues on their route. Uniform will be ACU/OCP trousers with boots. See an overview of the course. See **Annex F**

### *HCHS Cross Country Rescue Route*





## Annex G: The Beast ROUTE

**The Beast: (Yellow Route): Annex G:** The course length will be approximately 1.5 mile over hilling uneven terrain. See an overview of the course in Annex G. Each team will have to go over a 4' Foot wall, tire step, two 8'foot wall, low crawl, 4 hang tire, stud walk, tunnel crawl, Tarzan, and 4 balance beams. Uniform will be ACU/OCP trousers with boots. The team will turn around at the end of the trail. The judges will be position at the end of the trail and along the course. **All equipment will not go over the obstacles. Annex G.**

The mission is to get all ten team members and all equipment through the course as quickly as possible. **Uniform will be ACU/OCP with boots and gloves.** Litters are provided. Each team should have their own rucksacks (if not let us know if you're having difficulties securing them). They will be checked before you start the event. Each team will start and finish together as a group but do not have to stay together on the course. Teams must at least go through the course in buddy teams. There will be a Rally Point about 10 yards from the finish line. All team members must be there before the team sprints to the finish line. This helps the judges by preventing confusion at the finish line.

Do not leave any equipment unattended anywhere on the course to include the Rally Point. If you go back to help leave your ruck with a teammate. This is to prevent rucks getting mixed up with multiple teams on the course.

### *HCHS "The Beast" Route*



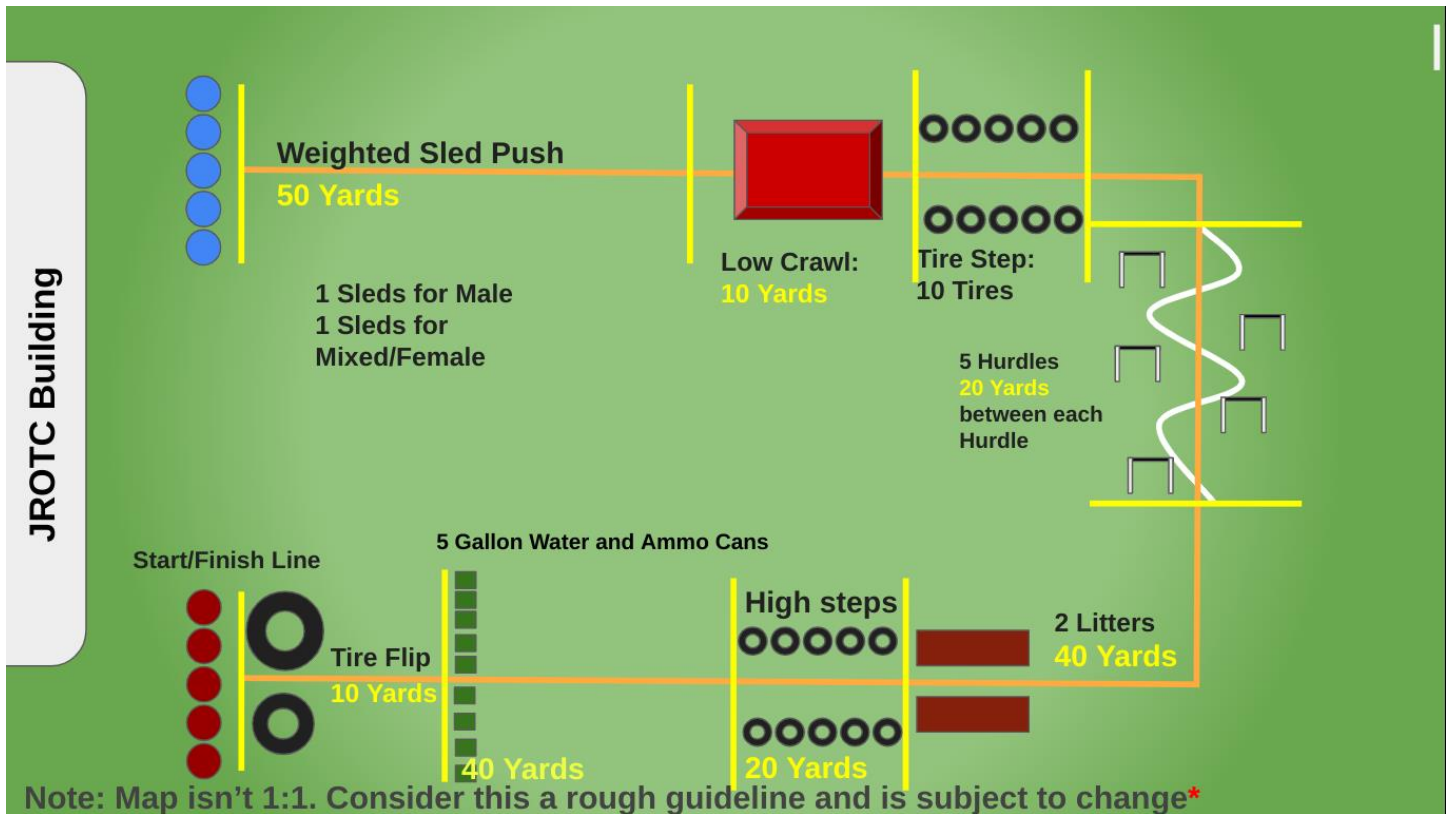
## Annex H - RFT ROUTE

**Raider Fitness (RFT): (Annex H):** The entire course is approximately 600 yards. All Five team members will start at once. Obstacles will include equipment carry, five hustlers, 5gal water cans, 5 gal ammo cans, (1) litter, maze, tire flip and tire steps for males, mixed and female teams. All equipment is to be carefully placed completely over the line. All raiders must go under the wooden frame. Each team will have one litter and one ruck. Male and Mix litters 100 lbs., Female litter 50 lbs. All rucks will be 25 lbs.

Uniform will be ACU/OCP trousers with boots. Each team will have to go over a 4' Foot Wall, 2 Tire Steps, two 10' Foot Wall, and 4 Hang tire, 4Stud Walk, and 4 log Walk. **The Litter and ruck will not go over any walls.** The next 5 raiders will then revers the course once the first 5 raiders have crossed the line.

All members on your 10 men team will go over obstacles. After going over the obstacles than they will pick equipment and continues on their route. Uniform will be ACU/OCP trousers with boots.

Uniform will be Team T-shirt, ACU/OCP Trousers with boots. **Raiders will negotiate a course as a 10-member team that will be approx. (see ANNEX H)**



## Annex I – Tire Flip

**The Tire Flip (Annex I):** This is the standard tire flip event. Cadets will divide into two 5-person teams. The tire will be positioned on the start/finish line between two cones. When instructed to begin, the first team will begin to flip the tire 50 yards. The entire tire must be across the line before the 2nd team flips the tire back to the other side of the course. All 5 team members must touch the tire while it is being flipped.

The tire cannot be rolled, pushed, or dragged. The tire must stay between the designated left and right boundaries, which the tire may not touch. At the finish line, the tire must be completely flipped past the start/finish line between the two cones. Time will be stopped once the tire is rested fully behind the start/finish line.

To prevent an injury caused by the tire coming down on a lower leg or foot, no Cadet can be ahead of the “pivot point” once the team begins each lift. The pivot point is defined as the point of the tire contacting the ground once a team begins the lift of the tire for each flip.

**Rope Bridge: Annex J:** Reference FM 3-97.61, TC 90-6-1 (Military Mountaineering-2002) and the 6<sup>th</sup> Brigade MOI. Follow this MOI and the attached score sheet for rope bridge competition penalties and details pertaining to the Raider Rampage Raider Meet. Below are some basic guidance for common conflicting methods for constructing a rope bridge. Please note the items in **bold**. These are in no particular order. Refer to Rope Bridge Score sheet for additional guidance.

- a) All team members and equipment must start behind the nearside anchor point. **Rope can only be placed in a bag. NO laying rope out.**
- b) Teams will need to have a 150 foot rope minimum.
- c) Distance between anchor points is 75-90 feet for all teams. Teams will only get one shot at completing the Rope Bridge. No redo's.
- d) If a Cadets back touches the ground while crossing, they **will** be penalized. If their feet or hands touch they will be penalized **if the judge deems they are pushing off to gain an advantage.**
- e) Aussie Seats and Swiss Seat refer to the FM and TC. (square knot with overhand knots w/ 4" pig tails). Knots will only be inspected for safety.
- f) The Far-Side Raider ties an end of the line bowline **w/overhand knot** or figure 8 and snaps in before crossing into the (dead zone) and is **belayed across the dead zone** (no figure 8 across the body). Belaying means someone is controlling the rope in both hands and watching the raider cross.
- g) **The near-side construction;** A wireman's knot or figure 8 slip knot on a bite is the only authorized transport Tightening System. Snap links or a stick can be used to aid in the disassembly of the knots. The snap-links or stick may not be used as speed tighteners. Be prepared to tie your near or far side knot after your rope bridge is complete should the judge request it.
- h) Once the transport knot is complete it **must be connected back to the bridge rope with a steel snap link. Steel link must be locked.** If you don't have a steel snap link we can provide one.
- i) **The far-side construction** must be secured **with two round turns and two half hitches** with or without a quick release or; a **tensionless anchor knot** minimum of 4 wraps around far-side anchor.
- j) The transport tightening system is secured to the anchor using two round turns and two (2) half hitches with or without a quick release. Either way it must have a 4 inch pig tail. The half hitches do not have to pass around all ropes between the anchor point and the wireman's knot or figure 8 on a bite. No raider can be snapped in to the one rope bridge until the construction is complete.
- k) Near Side Raider disassembles the transport system on the near-side. He/she can tie a bowline **w/overhand knot**, a figure eight in the end of the bridge rope or use the existing Wireman's or Figure 8 loop and secures the snap-link on his/her waist harness. **The Near Side Raider is then belayed across the obstacle by Raiders on the far-side.**
- l) As long as the Raider belaying has two hands on the rope and is looking at the near and far side raider cross the dead zone no penalties will be assessed.

***HCHS Tent City/Team run/Tire Flip***





## Annex J: Rope Bridge Scoresheet

<b>SCHOOL:</b>	<b>MALE</b>	<b>1</b>	<b>2</b>	<b>3</b>	<b>FEMALE</b>
<b>ROPE BRIDGE SCORE SHEET</b>	Time Per Penalty	# of Penalties	Total		
<b>EQUIPMENT/PREPARATION/INSPECTION: 5 MINUTES.</b>					
Improper Aussie Seats on far and near side raiders. (on the spot fix)	<b>NP</b>				
Improper SWISS SEAT; Snap link must surround all ropes and when rotated to the "UP" position, gate opening is "away from Raider" (on the spot fix)	<b>NP</b>				
Rope improperly laid out. (Back laid in pile, coiled or IN A BAG) (fix before start)	<b>NP</b>				
<b>CONSTRUCTION OF ROPE BRIDGE</b>					
Far Side Raider –Improper Bowline w/bite or Figure 8 when crossing	<b>30 SEC</b>				
Far Side Raider not clipped in with snap link prior to entering dead zone <b>(VERIFY)</b>	<b>30 SEC</b>				
Far Side Raider not belayed properly across the dead zone	<b>15 SEC</b>				
Dead zone violation (touching obstacle during loading/unloading, equipment dropped)	<b>15 SEC</b>				
<b>Far Side anchor knot not two round turns w/2 half hitches or tensionless anchor</b>	<b>1 MIN</b>				
<b>Improper Transport Knot: wireman's knot or figure 8 knot with a bite</b>	<b>1 MIN</b>				
<b>Near-side not secured w/round turn, 2 half hitches with or without quick release</b>	<b>1 MIN</b>				
Opening gates not opposite (if using two steel snap links)	<b>15 SEC</b>				
Two half hitches on near side knot are not between the anchor point and steel snap link	<b>30 SEC</b>				
<b>CROSSING</b>					
Any Raider hooked up before near side or far side is complete	<b>15 SEC</b>				
More than three (3) Raiders clipped into the bridge rope at any one time	<b>30 SEC</b>				
Dead zone violation (touching obstacle during loading/unloading, equipment loss)	<b>15 SEC</b>				
Crossing Raiders <b>FEET or HANDS</b> touch the dead zone to gain an advantage	<b>30 SEC</b>				
<b>BREAKDOWN OF ROPE BRIDGE</b>					
Breaking down rope bridge before last cadet is off rope	<b>30 SEC</b>				
Near Side Raider not clipped in with snap link prior to entering dead zone	<b>30 SEC</b>				
Near Side Raider not belayed properly across the obstacle	<b>15 SEC</b>				
Near Side Raider bowline w/overhand safety or figure 8 incorrect while crossing	<b>30 SEC</b>				
Rope or any item left in the dead zone after time is called	<b>15 SEC</b>				
Knots or snap links left in the rope after bridge break down and "TIME" is called	<b>30 SEC</b>				
<b>ADDITIONAL PENALTIES AND NOTES</b>					
Improper markings on rope that are obviously an advantage (cheating)	<b>DQ</b>				
Coaching from a non-team member (warning before penalty)	<b>1 Min</b>				
Rope Bridge Failure	<b>DQ</b>				
Use of Speed Tighteners (do not twist snap-links)	<b>30 SEC</b>				
<b>LESS THAN 8 Raiders CROSS ON BRIDGE</b>	<b>DQ</b>				
<b>Sportsmanship violation (profanity, disrespecting judge, etc)</b>	<b>30 SEC / DQ</b>				

<b>TIME</b>	
<b>PENALTIES</b>	
<b>FINAL TIME</b>	

Judge Signature: \_\_\_\_\_

## Annex K: Operations Center

1. When you arrive, Instructors must check in at the registration room. You will verify your teams, make any payments that are owed, turn in your “**Covenant Not to Sue**” form found in (**Annex C**), and be given a packet with a rotation matrix for your school.
2. Each team will consist of **12 members**, but only 10 will be allowed to compete in any one event. **Competing cadets will only be allowed to compete on one team only**; meaning a cadet on the male team cannot be a substituted for a cadet on the mixed team.
4. Mixed teams must have a minimum **of four females competing** in each event and can have up to nine females competing to be considered a mixed team.
5. **Brief cadets on taking care of equipment.** Dropping rucks, litters, water cans, etc. can damage equipment and cause an event to get behind. Penalties will be rewarded for neglecting equipment.
6. Judges will brief teams clearly before each event. Penalties will be clearly defined. After the completion of the event, the team commander will go to the judge for the final time and notification of any penalties assessed. Do not argue with the judge. All concerns should be addressed to the event OIC/NCOIC.
7. **Instructors are encouraged to validate times with judges immediately after the event** prior to the team commander signing the scoresheet.
8. Teams will be given a round robin schedule matrix with report times to each event. Please follow the matrix you are given to prevent bottlenecking at longer events. If a team or school decide not to compete in an event, please inform the scoring room to prevent a frantic search at the end of the day for a missing scoresheet that doesn't exist.
9. Unsportsmanlike conduct, such as profanity, will be subject to a one-minute penalty each time a member of a team does not conduct themselves as a JROTC cadet. The judge also has the authority to disqualify a team for unsportsmanlike conduct, to include the actions of team coaches and parents. Once again, if you have a concern, contact the event OIC/NCOIC.
10. Teams must follow signs and/or trail guides to stay on the course. If a team leaves the designated course they will be disqualified. Part of each event is attention to detail. **All courses will be CLEARLY marked so this should not be a problem.**
11. There will be a certified EMT onsite. In the event of an injury notify a judge, instructor or any cadet in an orange or yellow vest and the EMT will be dispatched to the site of the injured person. Only dispatch the EMT in case of an emergency.
12. Lunch meals through the concession for \$7.00 EACH. Burger or hot dog, chips, and a drink. Contact SFC Williams in the operation Center.

# HCHS Operations Center

