

The background image shows Glynn Academy High School, a large, multi-story building with a dark roof and many windows. In the foreground, there is a stone monument with the school's name on it. The image is dimmed to make the text stand out.

# Red Terror Raider Challenge

## EVENT BRIEF

Glynn Academy High school

Brunswick, Ga

26 April 2025

# Timeline

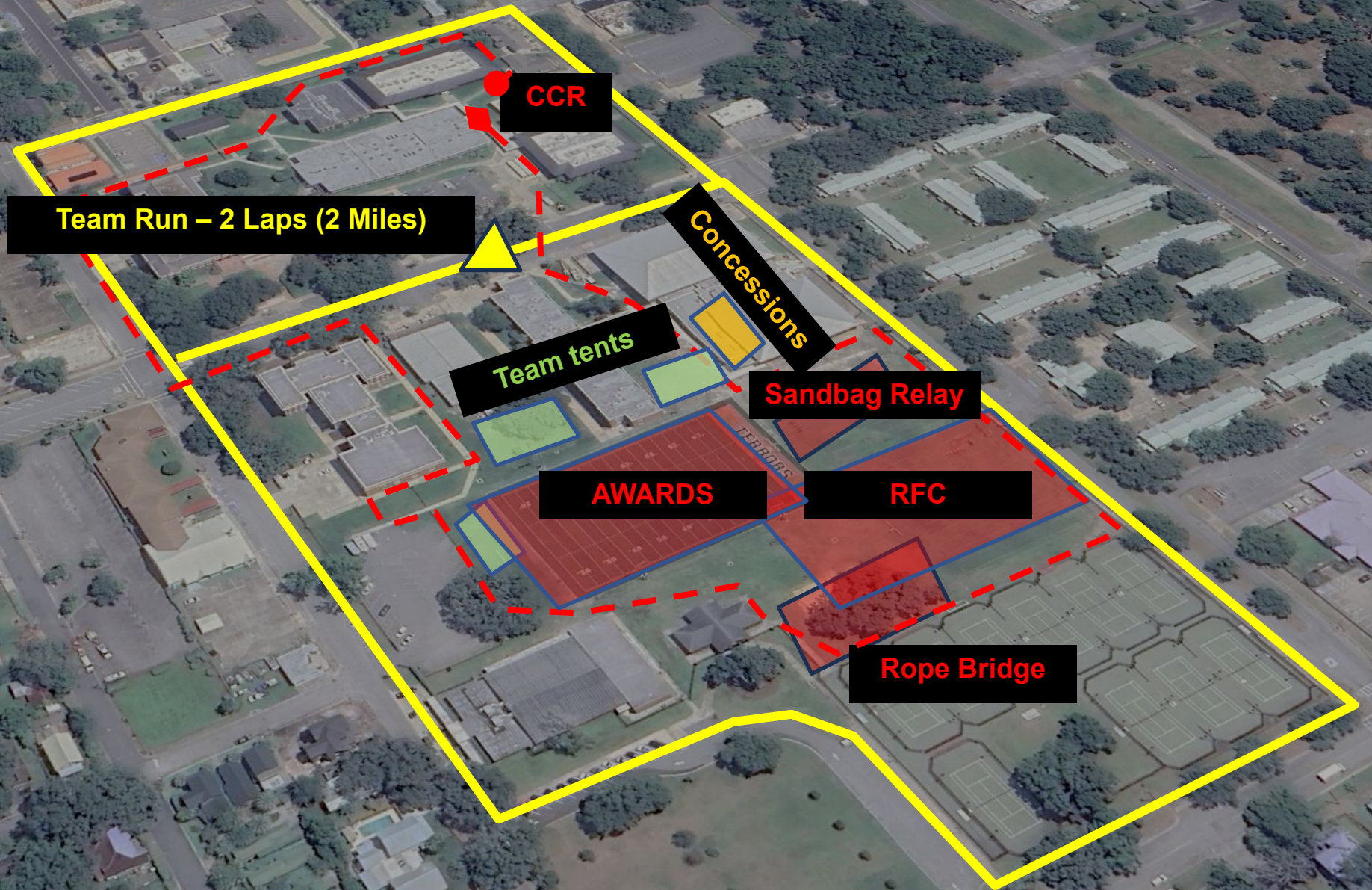
- 0700 – Team setup open
- 0830 – Coaches/Commanders brief
- 0900 – Team Run Starts
- 1000 – Rotation starts
- 1200 - Ultimate Raider
- 1300 – Awards Ceremony on football field

# **General info**

- Mansfield Street (on campus) will close at 0830 for team run.
- Team tent setup area is in the parking lot adjacent to the fence line next to the tennis courts. Loading zone is at the football field gate. Once unloaded, park busses in the student parking lot (Mansfield and Egmont)
- Concessions will be available at the stand near the football field gate
- In the event of rain, competition continues. If severe weather, all teams will move to the fieldhouse adjacent to the football field
- Athletic Trainer will be on-site throughout event. Teams should be prepared to treat minor injuries first, then send to medical tent. In the event there is a significant injury, EMS will be notified by the event HQ
- In the event there is a discrepancy with the scoring, notify HQ prior to signing scoresheet. Do not argue with the official. Any unsportsmanlike conduct from cadets, coaches, or parents may result in event DQ
- Restrooms are located at the field house



# Event Map





# Team Run

- 1<sup>st</sup> event for all teams
- Uniform is ACU trousers, team shirt, and running shoes or boots (not recommended)
- Male teams, Mixed, then Female per school
- Teams not required to stay together, however, 10-meter box at the end
- Sidewalk around perimeter
- Teams finishing with 9 = 5-minute penalty; 8 or less = DQ (7/6 for Females)
- No carrying teammates or profanity



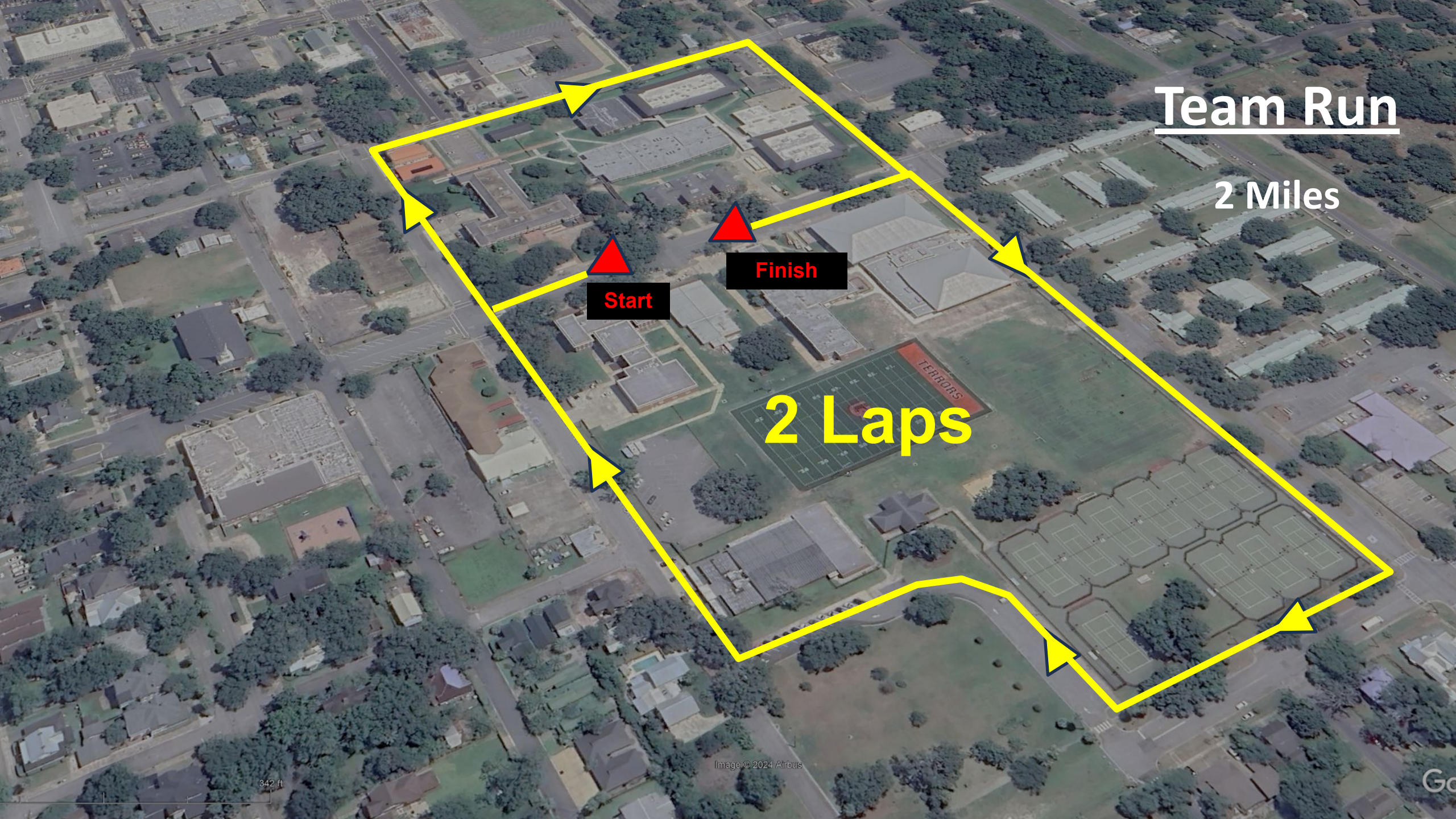
# Team Run

2 Miles

Start

Finish

2 Laps

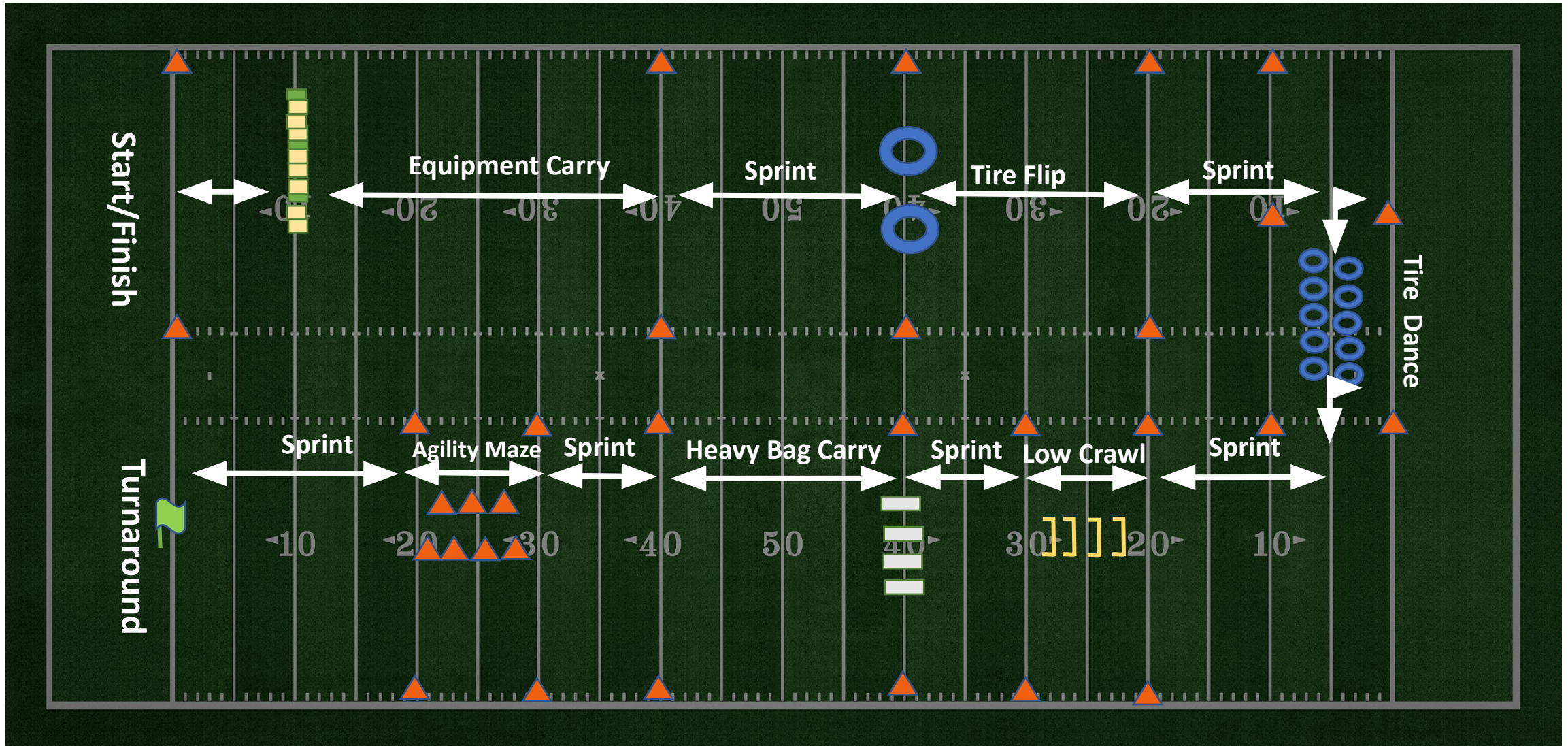




# **Raider Fitness Course**

- 400-meter event held on football field
- Team splits 5/5. First group runs course, second group resets
- Uniform is ACU/BDU/MARPAT trousers, team shirt, and boots
- Male teams, Mixed, then Female per school
- All gear must pass line and remain upright during equipment carry
- Tractor tires (x2) 1–2-person lift
- Raiders must attempt each tire in tire dance
- Heavy Bags (Crossfit Sandbags) roughly 30-50lbs per x4
- Single file in agility maze
- No dropping/throwing gear (30-second penalty per occurrence)

# Raider Fitness Challenge (RFC)

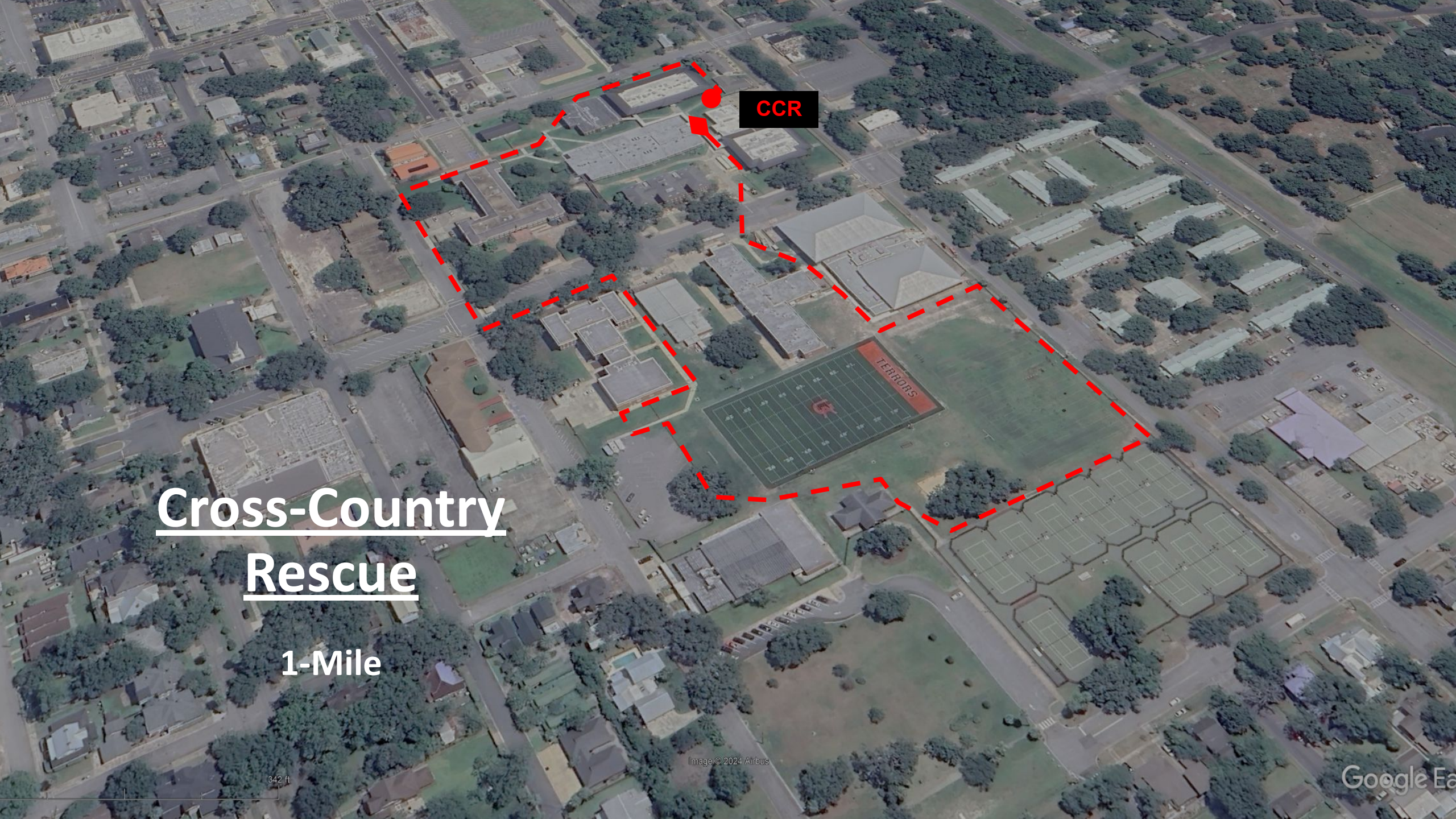




# **Cross-Country Rescue**

- 1-mile course over grass and pavement
- 4 rucks (35lbs), 1 stretcher (120lb/90lbs)
- Uniform is ACU/BDU/MARPAT trousers, team shirt, and boots
- Male teams, Mixed, then Female per school
- Teams not required to stay together; however, rally point 50 yards (at GA gate) from finish. Once all Raiders reach RP, the group can finish.
- No Obstacles
- No dropping/throwing gear – 30-second penalty per occurrence





CCR

Cross-Country  
Rescue

1-Mile



# **Rope Bridge**

- Standard Rope Bridge IAW 6<sup>th</sup> Brigade SOP
- Telephone poles
  - 60ft – Male
  - 45ft – Mixed/Female
- Minimum Rope Length 120ft
- Steel locking or opposing gate for near side transport tightening system
- No more than (3) Raiders clipped on rope at a time
- Feet / hands/back cannot assist crossing

# Rope Bridge





# Sandbag Relay



The background image shows a person from behind, wearing a black tactical helmet and a grey t-shirt. They are holding a thick, dark rope with both hands. On their left wrist is a silver watch, and on their right wrist is a yellow identification band. To the right, another person's arm is visible, wearing a grey t-shirt with a gold emblem and the letters 'MC'. The background is a blurred crowd of people in an outdoor setting.

# Questions?