



CPT Bill Jinright (RET)
JROTC SAI

**DALTON ACADEMY
ARMY JROTC
1250 CROSS PLAINS TRAIL
DALTON, GEORGIA 30721
706.876.4700 office
706.618.3811 cell**



1SG Eugene Jackson (RET)
JROTC AI

MEMORANDUM OF INSTRUCTION: PUMA Challenge Raider Meet hosted by Dalton Academy JROTC on 18 October 2025 at Dalton Academy.

GENERAL INFORMATION:

1. Entry Fee is **\$100 per school**. Schools can have a maximum of four teams not to exceed two teams per division. The Puma Challenge is open to the first 40 teams that register. Mail in advance is the preferred method, please add **ATTN: PUMA JROTC DEPARTMENT** to envelope when mailing payment and registration form. Payment on the day of the event will be accepted. Checks need to be made out to: **Dalton Academy JROTC**. Registration form is attached (**Annex B**).
2. **RSVP with an email as soon as possible with your projected teams that will be competing. You can send your registration form and payment later or present them the day of event. This will be a big help for planning purposes. bill.jinright@dalton.k12.ga.us**
3. There will be a brief coaches and team commanders' meeting that will take place at 0800, location trailer 9661. The first event will begin at approximately 0830. The awards ceremony will be held at the Dalton Stadium shortly after the conclusion of the competition.
4. Trophies will be given to the top three in each event and top three overall.
5. Please Park in designated parking areas only. See Event Map Annex E
6. Concession stand will be open at the football field. Food trucks will be on site.
7. Event T-Shirts and other JROTC items will be available for purchase by a local vendor.
8. **Instructors are strongly advised to validate times with judges immediately after the event, prior to the team commander signing the scoresheet.**

SPECIFIC INSTRUCTIONS:

1. When you arrive, Instructors only must check in at the registration room. You will verify your teams, make any payments that are owed, and be given a packet with a rotation matrix and wrist bands for each team.
2. **Teams will consist of up to 14 members, but only Ten (10) will be allowed to compete on Male Teams and Mixed Teams and Eight (8) on Female Teams in any one event.** Mixed teams must have a minimum

of four females competing in each event and can have up to nine females competing to be considered a mixed team.

3. **Competing cadets will only be allowed to compete on one team only**; meaning a cadet on the male team cannot be substituted for a cadet on the mixed team.
4. **Brief cadets on taking care of equipment.** Dropping rucks, litters, water cans, etc. can damage equipment and cause an event to get behind. Penalties will be rewarded for neglecting equipment.
5. Because of the narrow trails, only the Raider team members will be allowed to be on the CCR and Obstacle courses. There will be an observation area marked off for spectators within the Obstacle Course. **Only the ten members of the team are allowed on the course, no “motivational run along allowed”.** Schools are allowed to have someone taking pictures as long as they do not interfere with other teams or coach the teams.
6. If a team member is injured during the course and cannot finish, always leave a teammate with the injured Raider. Someone on the team must tell the judge about the injury and the time will stop when the eighth Raider crosses. A **5-minute penalty** will be added to the team final time.
7. Judges will brief teams clearly before each event. Penalties will be clearly defined. After the completion of the event, the team commander will go to the judge for the final time and notification of any penalties assessed. Coaches should verify times with the judge. Do not argue with the judge. All concerns should be addressed to CPT Jinright.
8. Teams will be given a round robin schedule matrix to follow. Please follow the matrix, be at each event on time. If a team or school decides not to compete in an event, please inform CPT Jinright or the scoring room to prevent a frantic search at the end of the day for a missing scoresheet that doesn't exist.
9. Unsportsmanlike conduct, such as profanity, will be subject to a one-minute penalty each time a member of a team does not conduct themselves as a JROTC cadet. The judge also has the authority to disqualify a team for unsportsmanlike conduct, to include the actions of team coaches and parents. Once again, if you have any concern, contact CPT Jinright.
10. Teams must follow signs and/or trail guides to stay on the course. If a team leaves the designated course they will be disqualified. Part of each event is attention to detail. All courses will be CLEARLY marked so this should not be a problem.
11. There will be a certified EMT onsite. In the event of an injury notify a judge, instructor or any cadet in an orange or yellow vest and the EMT will be dispatched to the site of the injured person. Only dispatch the EMT in case of an emergency. The EMT is not here to hand out band aids.

WEATHER INFORMATION: See Annex C for Evacuation Plan

1. **Weather:** Hot Temperatures could be a factor for this competition. Each team should bring their own water and ice. **Ensure all cadets start hydrating 2 days prior to the competition.** There is not a lot of shaded areas around Dalton Academy, so it is recommended that schools bring their own shade tent. The Heritage Park Pavilion will be available for spectators and restrooms. It is a covered

area with many picnic tables. This will not be used as a TEAM AREA, however the area surrounding provides a playground and grassy area for Team tents. There are several areas in parking Area 7, see Annex E, for Team areas as well.

2. **Lighting:** Lightning or Severe weather will stop the competition, however, if rain should take place throughout the competition day, the competition will continue with safety as our top priority.

COMPETITION EVENTS:

See **Annex G – Event Map**, for event locations. The Raider Competition will consist of five events that are designed with minimal chance for penalty. Teams may recon the sites prior to the start of the competition. We will try and have all school teams competing at the same location for the convenience of the coaches and schools guest support.

1. **Team Run:** The team run will be a distance of 1.14 miles on the Heritage Park track. The first lap will be on the outside of the track, and the last lap will be on the inside of the track. All cadets not running, and spectators must remain outside the track area. **Uniform will be ACU/OCP trousers, team shirt and running shoes. Boots can be worn but are not recommended.**
 - a. Teams must stay within 50 yards, from first to last Raider, at all times.
 - b. When schools arrive with multiple teams, the fastest team will go first then the next team will start once the first has completed one lap.
2. **Cross County Rescue:** The course length is roughly .8 mile. The event will take place on uneven terrain with possible water and mud. Obstacles include an eight-foot wall and a steep hill descent and incline. The mission is to get all ten team members and all equipment over the walls and through the course as quickly as possible. Uniform will be ACU/OCP trousers with boots.
 - a) Each team will start and finish with 4 rucksacks, **Female Teams will have 3 rucksacks**, 1 litter. **The rucksacks will weigh 30 lbs. and the litter will weigh 120 pounds for male & mixed teams and 90 pounds for female teams.**
 - b) Teams do not have to stay together on the course.
 - c) **There will be a Rally Point 20 yards from finish line.** All team members must be there before the team sprints to the finish line. This helps the judges by preventing confusion at the finish line.
 - d) **Do not leave any equipment unattended anywhere on the course to include the Rally Point.** If you go back to help leave your ruck with a teammate. This is to prevent rucks getting mixed up with multiple teams on the course.
 - e) Should team leave equipment on course, the team will receive a **5-minute penalty** per piece of equipment.
 - f) **Crossing the wall:** all cadets and rucks must go over the wall **or a 1-minute penalty will be assessed per occurrence; the litter will be placed in a designated box while crossing the wall. If a ruck is dropped or thrown from the top of the wall it will be a 1-minute penalty per**

occurrence. Someone should be on the other side of the wall receiving the rucks and sitting them down. (Please take care of equipment).

g) **Rucks may be dropped while crossing Monkey Bar obstacle.** Only Raiders not carrying litter must navigate Low Crawl, Monkey Bars, and Incline/Decline Balance Beam.

3. **Obstacle Course (see Annex E:** Raiders will negotiate 10 obstacles around a .5-mile course. Obstacles include incline/decline balance beam, 10-foot rope climb then a sloped descent, ladder climb, 12-foot wall (with ropes), single cargo net climb, staggered tires, 30" tunnel crawl and a steep hill ascent, suspended tire, hurdles, and double cargo net to the rally point. Uniform will be ACU/OCP Trousers and boots. Details of rules and penalties will be explained on the score sheet prior to the event.

a) **Raiders cannot assist teammates on bold, underlined obstacles above.**

b) **Cargo Net Climbs:** Only two Raiders on each side of the net at once for single climb and three on double side.

c) The **Rope Climb** will have two slick ropes. Raiders must grab and go under the wooden bar at the top of the platform. The following rules will apply to prevent a log jam at the rope climb obstacle:

- **All team members MUST climb a rope.**
- All Raiders must go down backwards on the 12 -foot wall with ropes slope.
- **A one-minute penalty will be given if all Raiders do not climb the rope or a Raider fails to go down the sloped wall. Do not slide down the sloped wall.**
- **Raiders must NOT walk down frontwards or jump from sloped beams.**

d) Teams will start every 5-7 minutes. Please brief your teams that this is a competition not a team building activity. Teams must get through the course as quickly as possible to prevent slowing down faster teams behind you.

e) You will be given two opportunities at each obstacle, after that you must move on. **Penalty will be 30 seconds for each obstacle failure unless otherwise stated.**

f) **For safety, all danger or risk areas will be painted yellow. Safe areas will be marked with white paint. Raiders must not jump from obstacles.**

4. **Physical Team Test (PTT):** This event is approximately a 200-yard course. Raider teams will pair up in two teams of five, **two teams of four for female teams**. Uniform will be ACU/OCP Trousers with boots. The first team of five will take off from the start line and reach the following obstacles:

Equipment Carry/Push/Pull (water/ammo cans, weighted sled, etc., transport fifty yards)
Tire Flip (all five team members must flip tire thirty yards)

Once team one has completed the tire flip, team two will reverse the course.

a) All equipment must be **across the line** when sat down and movement has stopped.

b) **All team members must be touching the tire before it can be flipped.**

- c) Dropping or throwing equipment results in a penalty. If a water can falls over after you set it down, it is not a penalty.

5. **Rope Bridge:** Reference FM 3-97.61, TC 90-6-1 (Military Mountaineering-2002) and the 6th Brigade MOI. Follow this MOI and the attached score sheet (**Annex A**) for rope bridge competition penalties and details pertaining to the Raider Rampage Raider Meet. Below are some basic guidance for common conflicting methods for constructing a rope bridge. Please note the items in **bold**. These are in no particular order.

- a) Distance between poles is 60 feet. Dead space will begin 6-7 feet from both anchor points. All team members and equipment must start behind the nearside anchor point. **Rope can only be laid back in a pile, coiled or placed in a bag. NO laying rope out flat.** Teams will only get one shot at completing the Rope Bridge. No redo's.
- b) If a Cadets back touches the ground while crossing, they will not be penalized. If their feet or hands touch they will be penalized **if the judge deems they are pushing off to gain an advantage.**
- c) Aussie Seats and Swiss Seat refer to the FM and TC. (square knot with overhand knots w/ 4" pig tails). Knots will only be inspected for safety.
- d) The Far-Side Raider ties an end of the line bowline **w/overhand knot** or figure 8 and snaps in before crossing into the (dead zone) and is **belayed across the dead zone** (no figure 8 across the body). Belaying means someone is controlling the rope in both hands and watching the raider cross.
- e) **The near-side construction;** A wireman's knot or figure 8 slip knot on a bite is the only authorized transport Tightening System. Snap links or a stick can be used to aid in the disassembly of the knots. The snap-links or stick may not be used as speed tighteners. Be prepared to tie your near or far side knot after your rope bridge is complete should the judge request it.
- f) Once the transport knot is complete it **must be connected back to the bridge rope with a steel snap link. Steel link must be locked.** If you don't have a steel snap link we can provide one.
- g) **The far-side construction** must be secured **with two round turns and two half hitches** with or without a quick release or a **tensionless anchor knot** minimum of 4 wraps around far-side anchor.
- h) The transport tightening system is secured to the anchor using two round turns and two (2) half hitches with or without a quick release. Either way it must have a 4-inch pig tail. The half hitches do not have to pass around all ropes between the anchor point and the wireman's knot or figure 8 on a bite. No raider can be snapped into the one rope bridge until the construction is complete.
- i) Near Side Raider disassembles the transport system on the near side. He/she can tie a bowline **w/overhand knot**, a figure eight in the end of the bridge rope or use the existing Wireman's or Figure 8 loop and secures the snap-link on his/her waist harness. **The Near Side Raider is then belayed across the obstacle by Raiders on the far-side.**
- j) As long as the Raider belaying has two hands on the rope and is looking at the near and far side raider cross the dead zone no penalties will be assessed.
- k) **Refer to Rope Bridge Score sheet for additional guidance.**

"LEARN. LEAD. SUCCEED"

ADDITIONAL INFORMATION:

1. Dalton Academy is located off I-75 at exit 328 approximately 50 miles north of Cartersville, GA and off I-75 at exit 336 30 miles south of Chattanooga, TN. We are located on the Mack Gaston Parkway (Dalton Bypass) at Heritage Park.
2. POC for this memo is CPT Bill Jinright (Ret.). For any questions, please email bill.jinright@dalton.k12.ga.us or call 706.876.4700 ext. 9661

Annex A: Rope Bridge Scoresheet

SCHOOL:					
CIRCLE ONE	MALE TEAM 1 MALE TEAM 2	MIXED TEAM 1 MIXED TEAM 2	FEMALE TEAM 1 FEMALE TEAM 2	Time Per Penalty	Penalties Assessed
EQUIPMENT/PREPARATION/INSPECTION: 5 MINUTES.					
Improper Aussie Seats on far and near side Raiders. (on the spot fix)				NP	
Improper SWISS SEAT; Snap link must surround all ropes and when rotated to the "UP" position, gate opening is "away from Raider" (on the spot fix)				NP	
Steel Snap link not 9kn or higher / Rope not 7/16 diameter (on the spot fix)				NP	
Team competing with less than required, Male Teams 10, Female Teams 8, Mixed 10 (min. 4 females)				DQ	
CONSTRUCTION OF ROPE BRIDGE					
Far Side Raider –Improper Bowline w/bite or Figure 8 when crossing				20 SEC	
Far Side Raider not clipped in with snap link prior to entering dead zone (VERIFY)				10 SEC	
Far Side Raider not belayed properly across the dead zone				10 SEC	
Dead zone violation (touching obstacle during loading/unloading, equipment dropped)				10 SEC	
Use of Speed Tighteners, twisting of the snap-links or stick. (Judge tells Raider to release item)				1 Min	
Far Side anchor knot not 2 round turns w/2 half hitches or tensionless anchor.				1 Min	
Improper Transport Knot: wireman's knot or figure 8 slip knot, both with a bite.				1 Min	
Near-side not secured w/round turn, 2 half hitches with or without quick release.				1 Min	
Two half hitches on near side knot not between the anchor point and steel snap link.				1 Min	
CROSSING					
Any Raider hooked up before near side or far side is complete				20 SEC	
More than three (3) Raiders clipped into the bridge rope at any one time				20 SEC	
Dead zone violation (touching obstacle during loading/unloading before being snapped in to rope)				10 SEC	
Crossing Raiders FEET or HANDS touch the dead zone to gain an advantage				20 SEC	
Transport Tightening System steel snap link opening gate not positioned up and away from knot loop				10 SEC	
Transport Tightening System snap link not locked during crossing				20 SEC	
Rope Bridge Failure (no tension on the rope)				DQ	
BREAKDOWN OF ROPE BRIDGE					
Breaking down rope bridge before last cadet is off rope				20 SEC	
Near Side Raider not clipped in with snap link prior to entering dead zone				10 SEC	
Near Side Raider not belayed properly across the obstacle				10 SEC	
Near Side Raider bowline w/overhand safety or figure 8 incorrect while crossing (If using)				20 SEC	
Near Side Raider not snapped into Transport Tightening System Knot, end of line Figure Eight, or end of line Bowline w/overhand safety when crossing				20 SEC	
Rope or any item left in the dead zone OR Far Side after time is called				20 SEC	
Knots or snap links left in the rope after "TIME" is called				20 SEC	
ADDITIONAL PENALTIES AND NOTES					
Improper markings (tape, dye, etc) on rope that are obviously used to gain an advantage. (cheating)				DQ	
Coaching from a non-team member (warning before penalty)				1 Min	
Sportsmanship violation (profanity, disrespect, etc) Penalty at the discretion of judge				30 SEC / DQ	

Team CDR Signature:

TIME	
PENALTIES	
FINAL TIME	

Annex B: Registration Form

Dalton Academy PUMA Raider Meet
Dalton Academy
1250 Cross Plains Trail
Dalton, GA 30721

School Name _____

POC (Please Print) _____

POC Contact Number _____

Total number of teams (maximum of 4): _____

Teams per category: Male Teams _____ (limit 2)

Mixed Teams _____ (limit 2)

Female Teams _____ (limit 2)

Total Amount Due _____ (\$100)

Amount Enclosed: _____ (Make checks payable to: Dalton Academy JROTC)

Signature of POC: _____

Mail checks and forms to: Dalton Academy
Attn: CPT (R) Bill Jinright
1250 Cross Plains Trail
Dalton, Ga. 30721

or

Scan and email form to bill.jinright@dalton.k12.ga.us

Annex C – Evacuation Plan

PUMA Raider Meet Evacuation Plan

Purpose: Annex C – Detail evacuation plan of raider meet site if required due to lightening or man-made threat

Scope: MOI provides the procedures to be emplaced, heightening the safety for all attendees with regards to:

- a. Inclement weather such as lightning in the area
- b. Man-made threat

1. The following evacuation procedures will be briefed and utilized for the meet:

- a. Lightning – If lightening is determined to be within 6 miles of the meet, the host will sound an air horn to gain the attention of all participants and spectators. Via megaphone, the host will inform all attendees of the lightening threat and direct them to immediately return to their POVs/buses, or if the school building is closer, to enter the school/pavilion to seek shelter. For events occurring outside of the megaphone range, the host will notify the event support personnel via radio to stop all competition and have the competitors on the lanes to immediately return to their vehicles or the school/pavilion for shelter. Host will announce all clear to the attendees once the lightning storm is a safe distance away.
- b. Man-made threat – If there is a situation in which there is a perceived or actual man-made threat (ie: bomb threat, person carrying a weapon, etc), the host will sound three blasts on the air horn and then notify the attendees of the threat, location and direction they are to immediately evacuate to distance themselves from the threat. The host will also contact 911 for police assistance.

Annex D – CCR



Low Crawl



8' Wall



Monkey Bars



Incline/decline Balance

Annex E – Obstacle Course



Incline/Decline Balance



10' Rope Climb



Ladder Climb

“LEARN. LEAD. SUCCEED”

Annex E – Obstacle Course (con't)



12' Rope and Wall Climb with descent
Raiders Must not walk down frontward (3-point contact)



Single Cargo net



Staggered Tires

Annex E – Obstacle Course (con't)



30" Tunnel and ascent



Suspended Tire

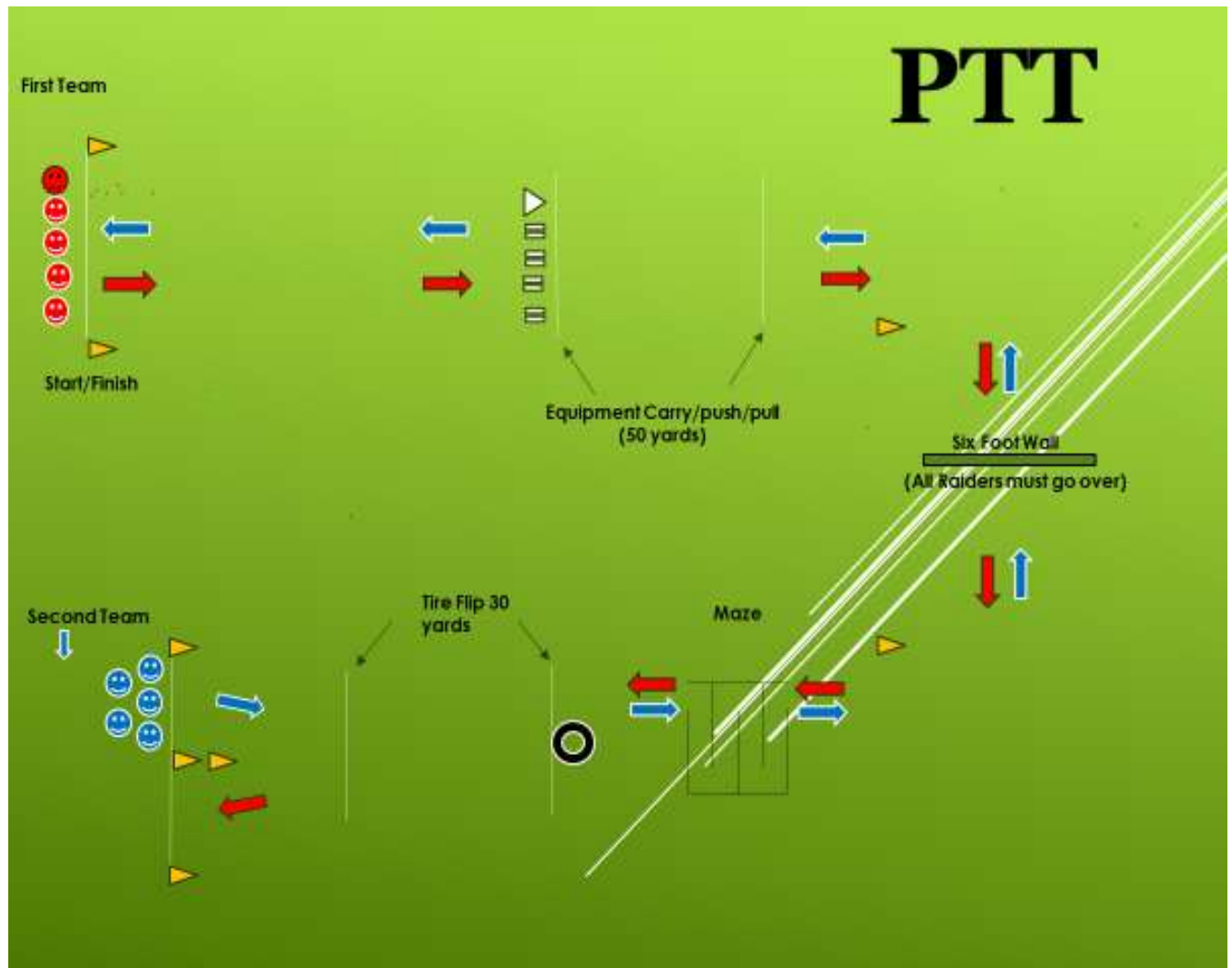


Hurdles



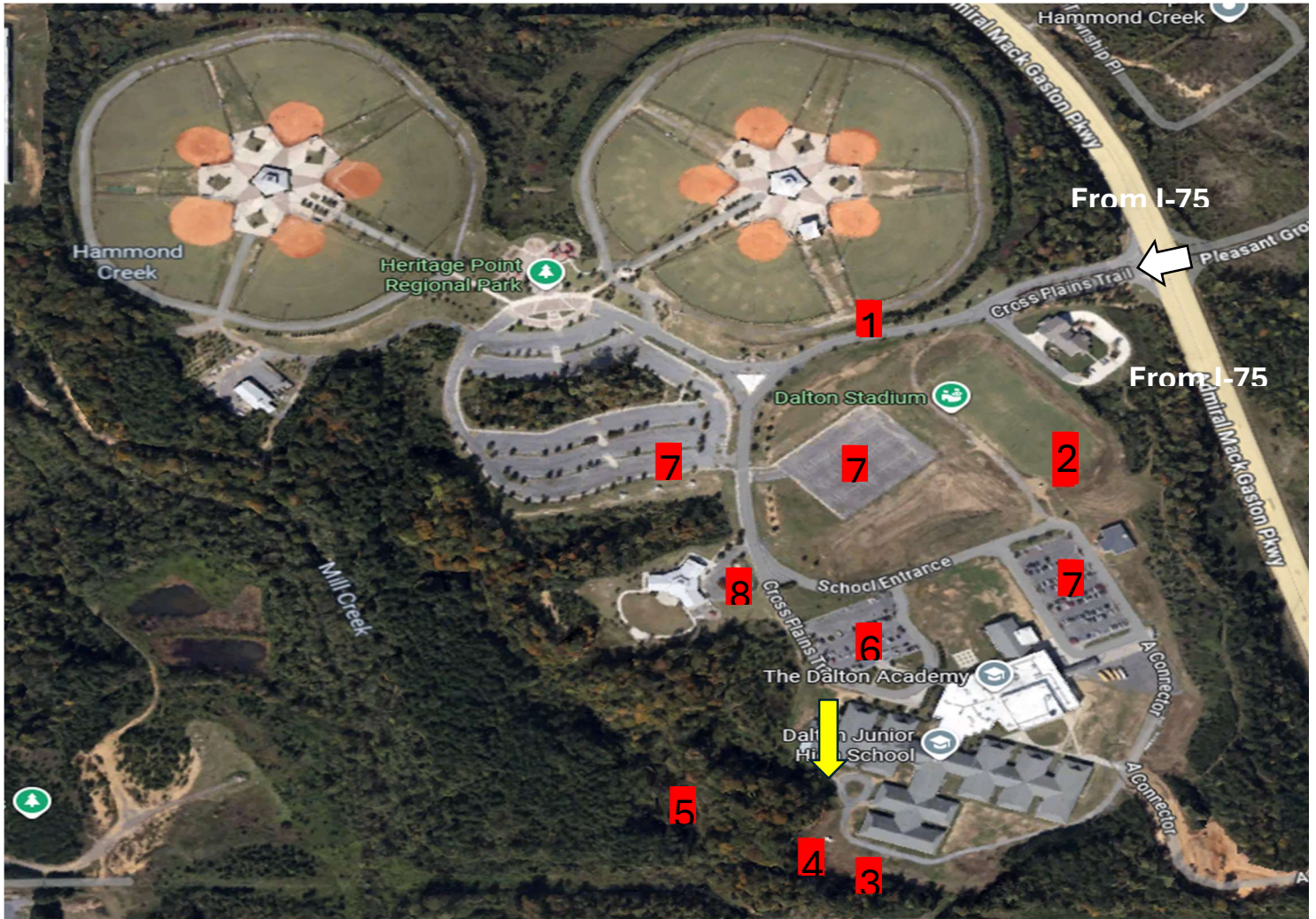
Double Cargo Net

Annex F – PTT



PTT wall will be 4 foot not 6 foot

Annex G - EVENT MAP



1. Team Run
2. PTT
3. Rope Bridge
4. CCR
5. Obstacle Course
6. Team Bus Parking
7. Visitor/Spectator parking
8. Rest area/Bathrooms



Scoring Room Trailer 9661

Dalton Academy
1250 Cross Plains Trail
Dalton, Georgia 30721

“LEARN. LEAD. SUCCEED”