

# *QUEEN STAGE*





# *QUEEN STAGE*

The Queen Stage: the toughest ride of all. Where you go further, higher and deeper than ever before. The ultimate challenge for the participants, and a thrilling story of expectation and hope for those who get to watch it.

A project that combines the toughest of cycling, with the most hopeful and sensitive part of cancer care.

# *The plan*

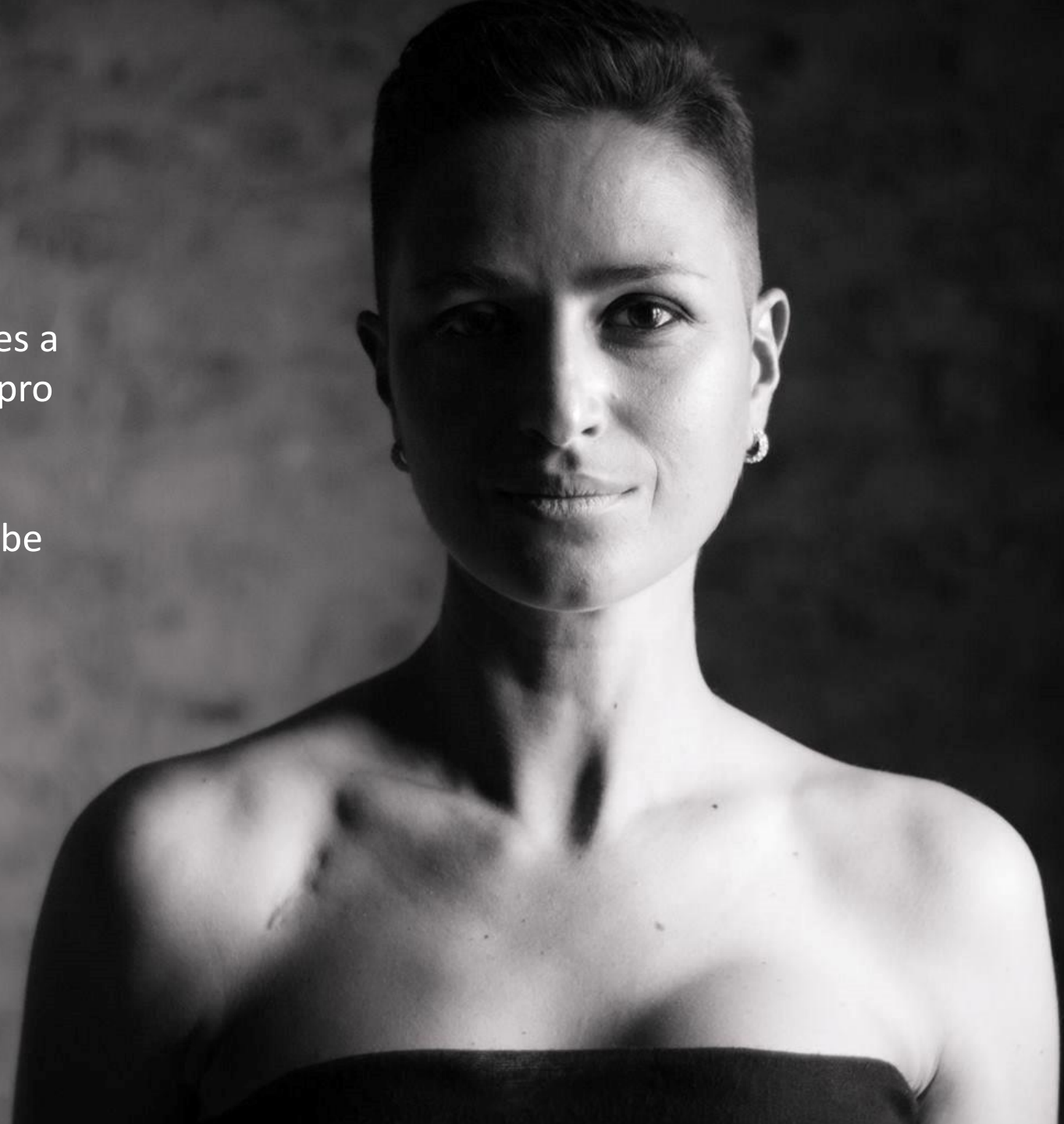
A -female- cancer survivor that rides a full grand tour, a day ahead of the pro men. Impossible.

In theory. Because what do you do when your pro coach says it might be possible, and your oncologist says there's no harm in trying.

You try, right?

The goal is to ride the maximum amount of kms of each stage in France this summer, in a medically responsible way.

Champagne in Paris is the dream.





# *Who is Goedele?*

She wasn't born a cyclist. She became one, almost by chance.

At age 30 she was diagnosed with an ER+ breast cancer. After two years of heavy treatment, she had the opportunity to join a cycling program for survivors.

Five months later, she rode the Tour of Flanders (235km), the year after 1000km in 4 days.

Sport as a way to health became her life story: for her own health, coaching others, a career switch, working on improving healthcare for future patients, and sharing the message: a sporty lifestyle is the best possible health investment.





## *Team*

Just like a cancer treatment, cycling is a team sport. Without compagnons on the bike and a support crew, this project would be impossible.

On our way to Paris, Goedele will be joined by

- 4 riders
- 8 staff members
- 1 team car
- 2 mobilhomes

The intense preparations are backed up by Belgium's top cycling professionals.



# *Fundraising*

Cancer is hard. Rebuilding your life afterwards as well.

With this project, we want to share a message of hope and also organise a fundraiser for cancer charities. To pay forward the support Goedele received when she was ill.

Our non-profit organisation Queen Stage will be fundraising for two cancer charities.



# *The charities*

- With our support, *Warriors against cancer* will start a new sport project in 2024 , for young adults with cancer (18 – 35 y).
- Part of your fundraising will go directly to *Think Pink*.

We engage ourselves to full transparency.

All project costs are covered by our partners, so all fundraising will go 100% , and directly, to the charities.





# The fundraising

## Financial Gifts

Individuals can donate directly on the Warriors website. As of 40 euros, this is with a tax certificate, for Belgian citizens.

Companies and organizations can donate, by gift or invoice, to

- the Warriors project or
- our Think Pink Belgium project page

## Tombola

Each stage (June 30th – July 22nd) you can win one of the day prizes, a ticket costs 5 euros !

Check the prizes as of June 15th on our website and play on the day(s) of your favorite items!

## STRAVA™ Challenge

How many times do we cover the total Tour-distance together, from June 30th until July 22nd? Run, swim, walk, bike, kayak, ... and help us complete the 3,404 km

And take a friend! Moving together is the best thing you can do for your current and future health.

## T-shirts

*The Vandal*

At “The Vandal” you can buy your own “Queen Stage” T-shirt.

For every T-shirt sold, 10 euros will be transferred to our charity!



# Our main partners



*...en vele andere bedrijven en vrijwilligers!*



LEVEL ARCHITECTEN  
— ARCHITECTENSTUDIO —



ecopuur  
camino



# **QUEEN STAGE**

## Contact

VZW Queen Stage

info@queenstage.be  
www.queenstage.be

Jef +32 475 25 62 55

Toon +32 470 44 40 47

Goedele  
Instagram



Queen Stage  
Facebook



Queen Stage  
Instagram

