



IVORIAN HAEMEOGLOBNOPATHIES CLINIC SORYBAK

Thalassemia and Sickle Cell Anemia Treatment Hospital

The Founder

Namizata Bakayoko Sudjic

Entrepreneur, Author, President Founder and Data Analyst

I'm the President and Founder of Ivoire Foundation. I'm working as a data analyst for LabCorp Drug Development pharmaceutical company. I have founded the Ivoire foundation, a charitable organization. I always try to find ways to be able to continue to help as much as I can. My brother passed away at the age of 18 from sickle cell anemia, and I also suffer from the condition. It can be fetal and is a hereditary condition. I wish to assist my Ivory Coast people who are suffering and dying from this disease. This hospital is being built in memory of my brother, IBRAHIMA Sorryh BAKAYOKO.



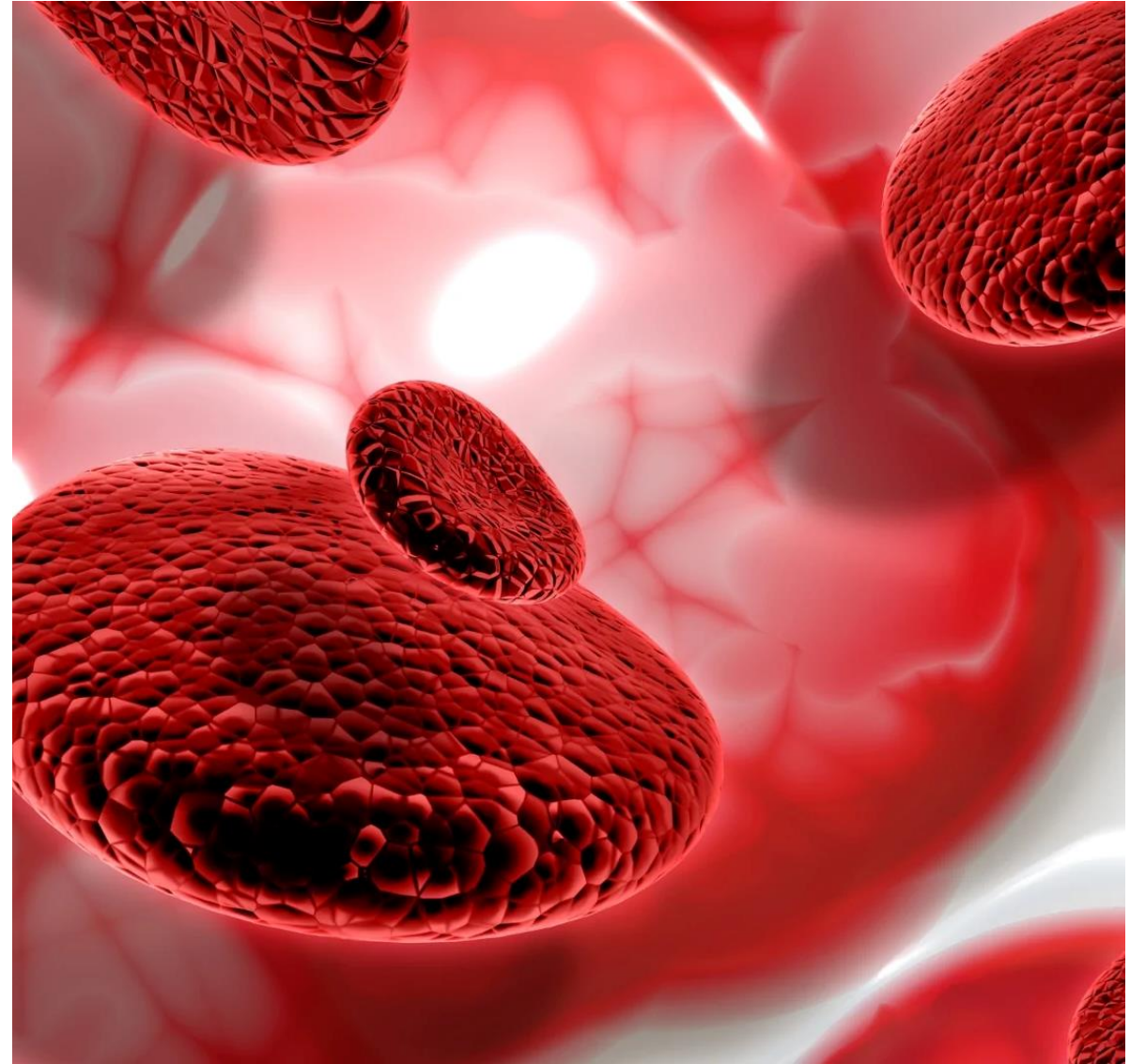
About Hospital

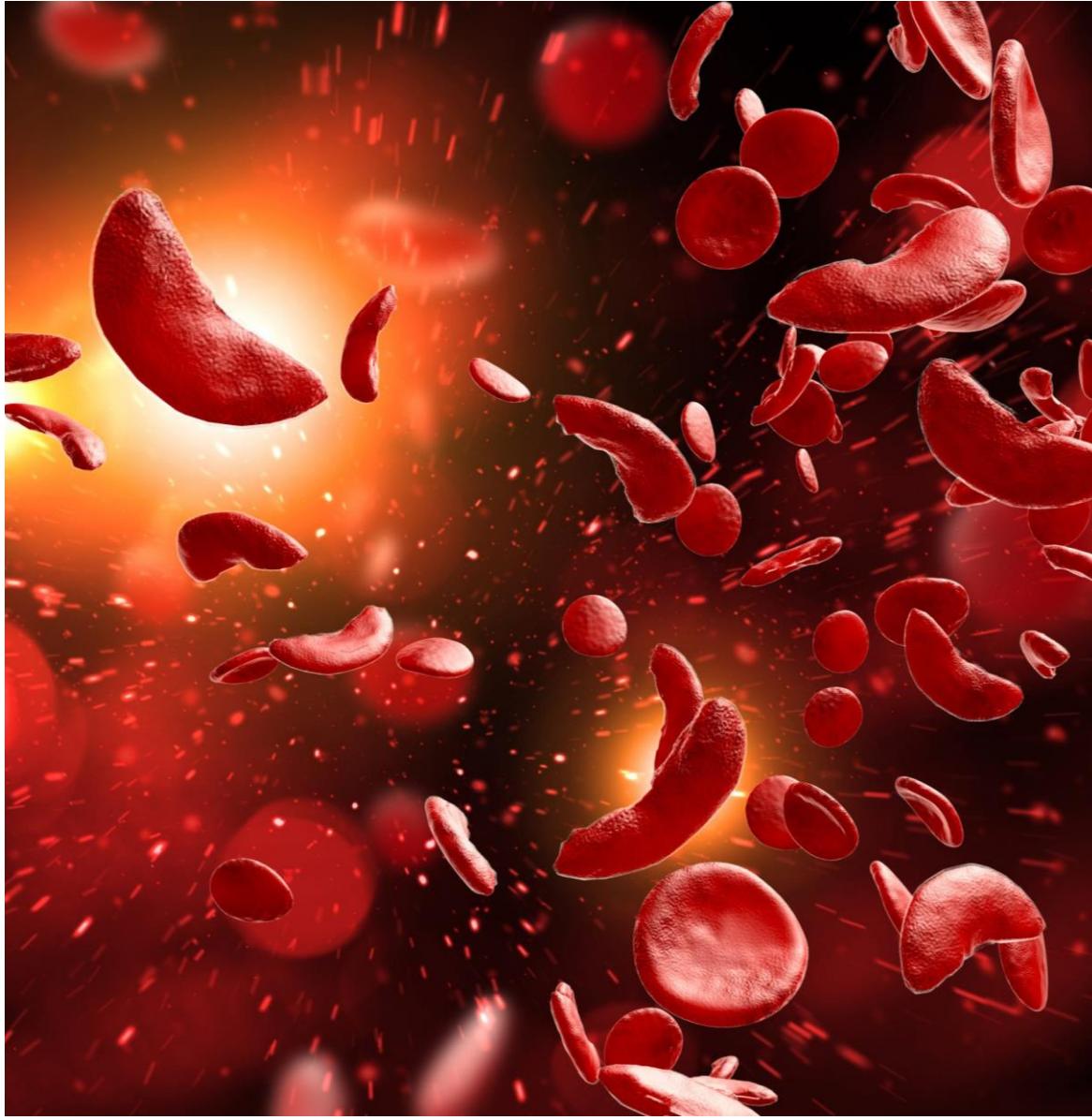
- Working towards the better treatments and cures for children and teens with sickle cell and thalassemia disease in the Ivory Coast.
- The approach is to create a true medical home where patients and their families can feel seen and heard.
- Understanding the complexities of the disease, our qualified and comprehensive team will care for the patients and their family.
- Deeply committed to the people of Ivory Coast and want to advocate for them within the healthcare system.
- We will provide the abundant resources of a general hospital to care for patients and to help you manage the disease and its symptoms.



What is Thalassemia

- Thalassemia is an inherited blood disorder caused when the body doesn't make enough of a protein called hemoglobin, an important part of red blood cells.
- When there isn't enough hemoglobin, the body's red blood cells don't function properly and they last shorter periods of time, so there are fewer healthy red blood cells traveling in the bloodstream.
- Red blood cells carry oxygen to all the cells of the body. When there are not enough healthy red blood cells, there is not enough oxygen delivered to all other cells of body.
- Person having thalassemia may feel tired, weak or short of breath and may have mild or severe anemia. Severe anemia can damage organs and lead to death.





What is Sickle Cell Anemia

- Sickle cell anemia is one of a group of inherited disorders known as sickle cell disease. It affects the shape of red blood cells, which carry oxygen to all parts of the body.
- Red blood cells are usually round and flexible, so they move easily through blood vessels. In sickle cell anemia, some red blood cells are shaped like sickles or crescent moons. These sickle cells also become rigid and sticky, which can slow or block blood flow.
- There's no cure for most people with sickle cell anemia. Treatments can relieve pain and help prevent complications associated with the disease.

Disease Symptoms



Shortage of the red blood cells



Periodic episodes of severe pain



Swelling of the hands and feet



Vulnerability to the infections



The delayed growth or puberty



Different eye-sight problems



The Problem

- Thalassemia and Sickle cell disease (SCD) are common throughout Ivory Coast, affecting up to 3% of births in many parts of the country. But still it remains a low priority for many health ministries in the area. There is no proper hospital to treat this disease.
- The effects of the diseases are multi-dimensional, ranging from causing high morbidity and mortality, and reducing the quality of life, to imposing a high socio-economic burden on individuals, families and health systems.
- There are very few locally produced medicines for these diseases specially for SCD in the Ivory Coast, meaning that many sick patients do not have access to the medicines and may not afford to buy the imported ones. As a result many people are dying of these diseases.



Affect on Ivorian People

- Living with the disorder may be challenging and symptoms like fatigue and weakness can have a major impact on many daily life activities of the people having this disease. A long-term condition that needs on-going management can have a negative impact on mental health leading to feelings of anxiety and stress in the patients.
- Hematopoietic stem cell transplantation (HSCT) using a matched donor is currently the only curative option for the disease. However, HSCT is expensive, and furthermore, the majority of patients lack a suitably matched donor, and there is deficiency of the required medical resources and expertise to perform HSCT in Ivory Coast.
- The cost of standard treatment and medicines is high and greatly exceeds the average family income so many patients can't afford the treatment and eventually are dying.
- The psychological impact of living with a long-term condition and associated social stigmatization is also a heavy burden for patients and their families in Ivory coast.





The Solution



This diseases can be prevented or treated with timely access to appropriate and affordable medicines, vaccines and other health services.



There is a need to spread the awareness about the diseases and teach people about the symptoms, preventions and treatment.



There must be affordable medical center for diagnoses and treatment of diseases so that poor people can easily get immediate help.

Facilities We Will Provide



Diagnostic Services



Therapeutic Services



Blood Transfusion



Free Medicines

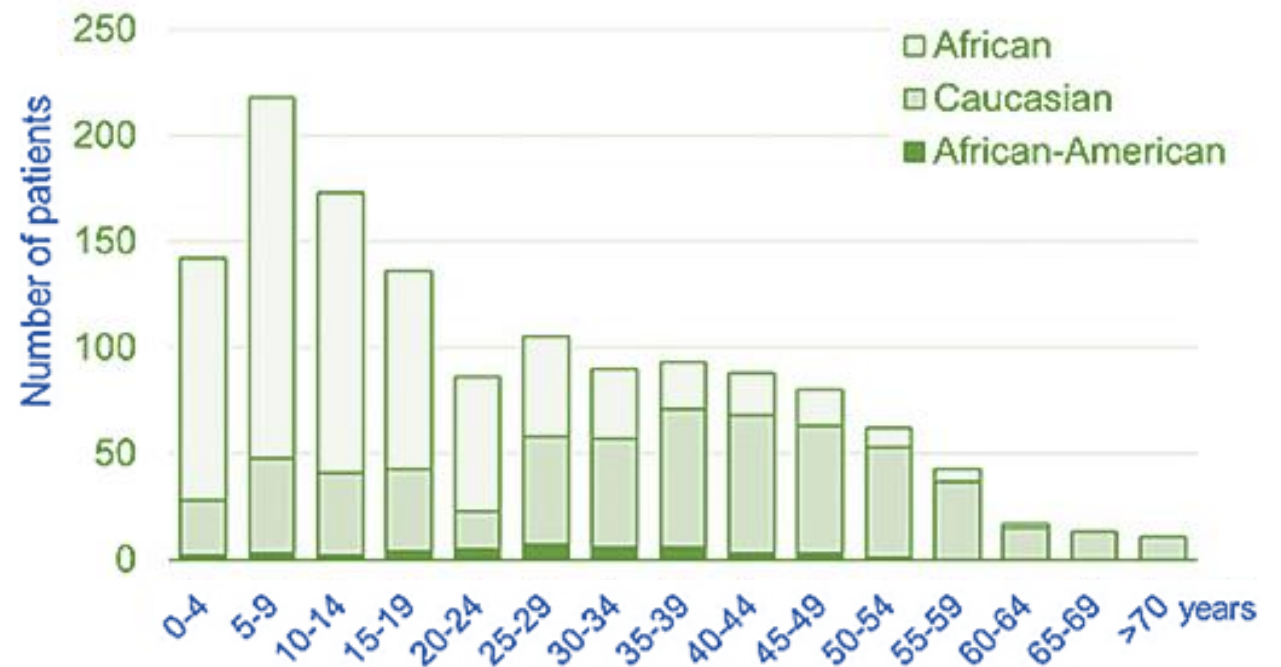


Health Education



Distribution of SCD Patients by Age

Distribution of sickle cell disease (SCD) patients by age and ethnicity. The data reports, for each age group, the number of Africans and Caucasians patients of the cohort.



Funding Request

Looking forward to
raise **50,000,000**
million USD for
starting the work on
project.



Use Of Funds

\$XXX

Stage 1 of Milestones

\$XXX

Stage 2 of Milestones

\$XXX

Stage 3 of Milestones

Contact Information



Phone

(+44)07490488696



Email

namybak@hotmail.com.Uk



Thank You !