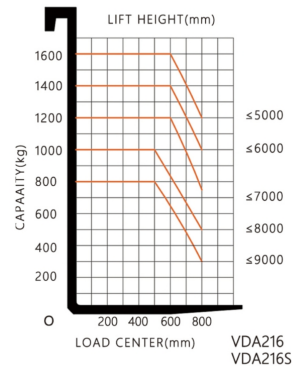
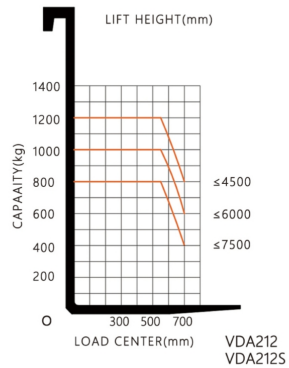
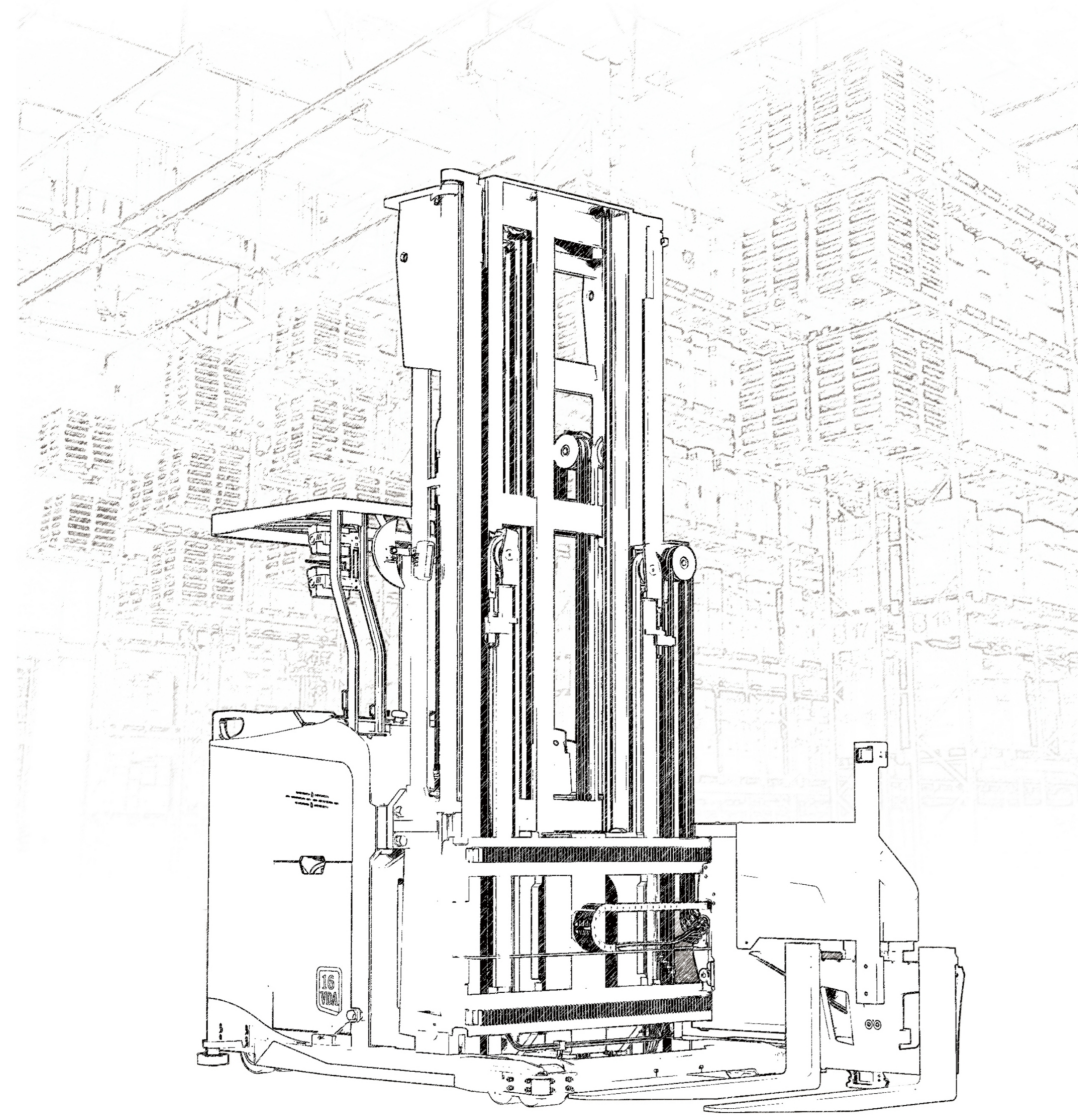


Product parameters

Product		VDA212-45	VDA216-45
Specifications	Manufacturer	Efffork	Efffork
	Drive type	Electric	Electric
	Wheelbase	1650	1700
	Load capacity	1200	1600
	Load center	550	600
	Driving mode	Standing on	Standing on
	Dead weight(with battery)	4900	5450
Tyres	Tire type	PU	PU
	Front load wheels	φ140×100	φ140×127
	Rear driving wheel	φ380×165	φ380×165
	Wheel qty(x=driving wheels)	1x / 4/2	1x / 4/2
Dimensions	Lifting height	2500-7500	2500-9500
	Height of overhead guard	2260	2260
	Min ground clearance	45	45
	Overall length (Forks sideways)	2895	2945
	Overall width(including guide wheel)	1450	1550
	Fork specification	1100/122/45	1200/122/50
	Fork width	425-750	425-750
	Minimum turning radius	1950	1980
	Minimum main aisle width	3700	3800
Performance	Minimum aisle width	1550	1650
	Travel Speed(loaded/unloaded)	9/10	9/10
	Lifting Speed(loaded/unloaded)	250/300	250/300
	Lowering speed(loaded/unloaded)	300/300	300/300
	Travel brake	Electromagnetic brake recycled brake	Electromagnetic brake recycled brake
Parking brake	Electromagnetic brake	Electromagnetic brake	



Man-down VNA Forklift



Industrial Trucks Group
 Industry Investment Industrial Park, Shucheng,
 Lu'an, Anhui Province, China

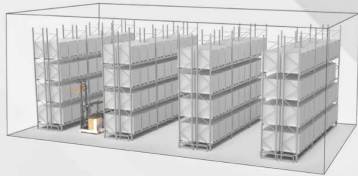
Whatsapp: +86-13405182702
 Email: sales@effifork.com
 www.effifork.com

Reminder: The sample book is for reference only. If the image does not match with the real thing, the real thing shall prevail, the final interpretation right belongs to Industrial Trucks Group.

Product Overview

Efffork's new generation of man-down type tri-lateral VNA forklift is suitable for very narrow aisle with lifting height 2.5m-9.5m, adopting the patented electric drive fork (optional configurations) can save energy and improve working efficiency. It is fitted with multiple active safety protection, comfortable operating environment and rich optional configuration, the narrowest rail to rail distance is only 1.5m, can quickly improve the storage volume rate.

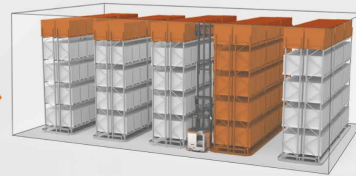
Using reach truck or other forklift



Warehouse can hold 300 pallet spaces

Increases warehouse volume by 65%

Using Zowell Man-down Type VNA forklift



Warehouse can hold 500 pallet spaces

Application Industry



Medicine and Food



Machinery and hardware



Textile and Chemical



Electrical and Electronics



E-commerce logistics

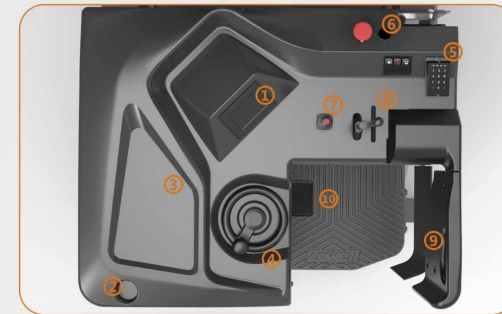


Furniture Decoration

Product Features

Top view for VNA forklift fitted with electric drive fork

- 1.HD LCD meter
- 2.Cup holders
- 3.Document Placement Area
- 4.Small diameter steering wheel
- 5.Electronic combination lock



- 6.Emergency power-off switch
Multi-link rocker switch
- 7.Integrated cross-operated handle
- 8.Power down protection
- 9.Comfortable hand cushions and backrests
- 10.Pedal



Stronger and wider view roof rack



HD display & rear view mirror



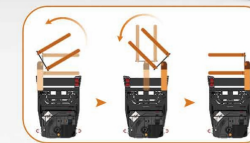
Judging left corner blind area and the space to the left and right of the pallet when picking up



Fork camera & horizontal laser line to identify beam position



Fork side shift



Fork rotation and side shift can be operated at the same time.

By side shifting and rotating the forks, the stacking of both sides can be completed without changing the direction of the forklift, which greatly improves the work efficiency.



Active safety function: travel lock function

If the forks are not in the safe position, the forklift is actively locked to prevent the operator from accidentally hitting the racks and causing accidents. The above are the three fork safe positions.