



## **Rough Terrain Forklift**

**3, 5, 7 & 10 Ton**



**Bomaq is a specialized, Spanish-made rough-terrain forklift known for its exceptional maneuverability, including a compact turning radius for both 4-wheel drive and 2-wheel drive models. It is designed for versatility in harsh conditions, using a combination of rugged construction, hydraulic controls for precision, and features like isolated cabins for operator comfort.**

Sold & Serviced by  
**GENEX INDUSTRIAL EQUIPMENTS LLC**  
DUBAI, U.A.E  
Helpline: +971-556461225  
sales@genex.ae, www.genex.ae





## ABOUT US

Bomaq Industries S.L., is a young company, founded in 2013, with the consolidation of many years of experience in the forklift industry, and formed with the objective of solving many unattended issues and needs of forklift users. As a result, we have created a solid company which manufactures a remarkable product, thus creating a great experience in the acquisition of forklifts for our customers worldwide.

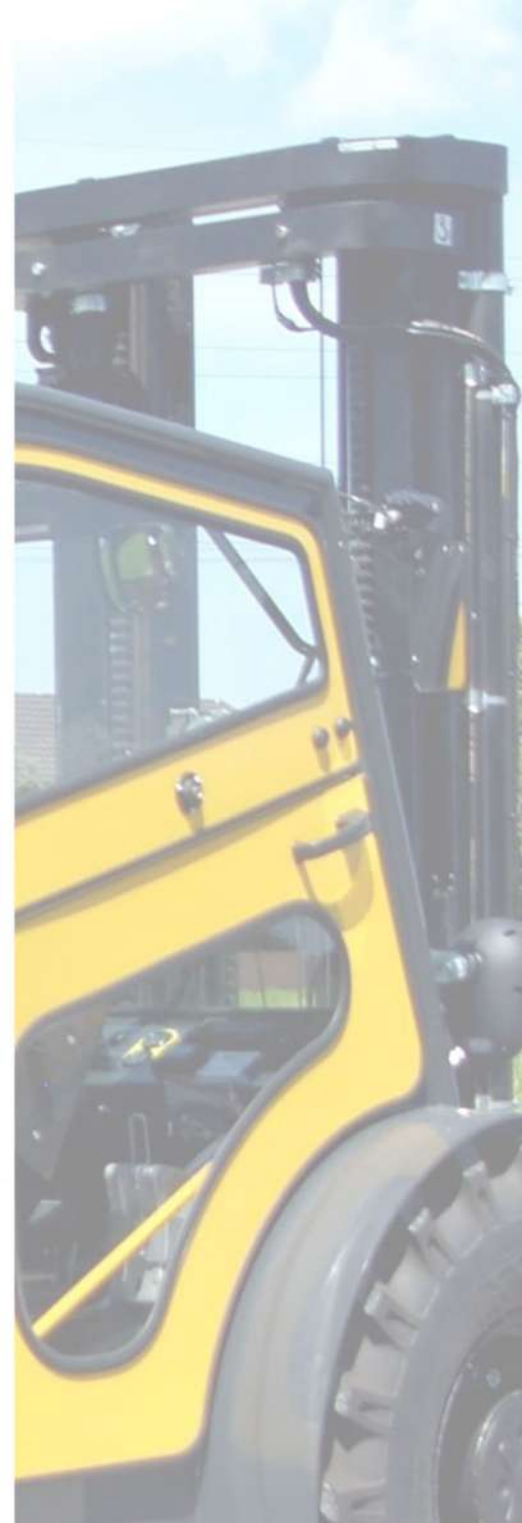
With more than 20 years of experience in this industry, and having worked as an Engineering and Design Manager, Mr. Antonio Martínez decided to begin his own company, leading a complex operation to design, manufacture and distribute a brand new line of rough-terrain forklift trucks he decided to name "Bomaq".

The success of our company has to be attributed the outstanding team of professionals that contribute to the thriving of our organization with their knowledge and enthusiasm, while always maintaining the highest standards for quality and ethics that have been established by its founder from the beginning.

Bomaq Industries is offering the world a completely new forklift concept. With the Multi Purpose Forklift (MP type), we help our customers have the best of both worlds: industrial and rough terrain forklifts. The MP type offers the best 4WD maneuverability in the world, due in part to having the best turning radius of any 4WD forklift, even when compared to the 2WD models of our competitors.

After having created such a successful concept and product, Bomaq, inspired by the market's needs, decided to create the first 4x4 rough-terrain forklift fully powered by electricity. This forklift offers a variety of unique advantages, and it is appropriate for farming, agriculture, mining and other industries where the reduction of fuel emissions and noise are of paramount importance. With the E4 we are paying attention to the future now.

The main purpose at Bomaq is our customer's satisfaction. Because we want to establish solid and long term relationships with our partners, we make sure that our products meet the highest standards for quality. To do that, we manufacture top of the line products using the best components available in the market, while ensuring that we can provide an efficient worldwide support. The end result is a long-life product with optimum performance capabilities and an efficient customer service.







# QUALITY & PERFORMANCE

To maintain our standards for quality and performance, we make sure we invest all of our efforts in:

- 1.** Maintaining a properly trained professional staff committed to comply with the company's high standards for quality.
- 2.** Acquiring our forklift components from the best brands and suppliers in the world: Donaldson Filtration, Grammer, Linde Hydraulics, Parker Hannifin, Perkins, Poclain, Sauer Danfoss, Vetter and ZF among others. This results in high quality of our products, and service and warranties for our customers because all these companies offer world-wide support.
- 3.** Making our products easy and simple to be repaired and maintained, therefore reducing not only their operation costs to the minimum, but also in expenses for technical training and staff for service and maintenance.
- 4.** Creating a dealer's network capable of sharing our values and ethics while maintaining our commitment to customer's satisfaction. Having partners around the world contributes to our brand awareness to the benefit of all.
- 5.** Paying attention to the feedback received about our products. We treasure positive feedback, and we make improvements and corrections where necessary to convey those benefits back to our customers.
- 6.** A Total Quality Control System applied to every aspect of the manufacturing process, starting at the Designing stage where we use 3D Simulation and Stress Analysis software, and continuing on to the assembly line, and all the way to the shipping of our products to avoid any deviation from our established standards.

The place where it all starts is our manufacturing plant in Murcia, Spain, where at the moment we have capacity to produce around 500 units per year. We have an integrated workshop for an efficient manufacturing of our forklifts, and this gives us total control for quality and accuracy in all stages of production.





# KEY FEATURES OF OUR PRODUCT LINE MP, RT AND E4

- ▶ Small and compact size in relation to their capacity, with an unbeatable maneuverability and ease for transportation. Their low gravity center improves the machine's stability and reduces the risk of overturn and other type of accidents.
  - ▶ Attention to the human factor. Our designs always take into consideration the comfort and safety of the operator. We provide spacious cabins, with 3 levels of noise and vibration isolation (engine, cabin and seat). All main functions are integrated in joysticks, adjustable steering column, and adjustable seat with seat belt and arm rests on sides, rear view mirrors, easy access, and great visibility.
  - ▶ All the important filters have alarm sensors indicating that the filter is not performing efficiently, therefore demanding to be replaced. They can be easily accessed, reducing maintenance time and cost.
  - ▶ Fully equipped standard designs. All of our forklifts come with all the necessary components to make it a top of the line machine. This includes half cabin, road lights, horn, set of forks, rotating beacon, cyclonic air pre-filter at engine, multipurpose tires, 4th valve added to the carriage and integrated side shift.
  - ▶ High capacity hydraulic and fuel tanks independent from the chassis, with spacious maintenance access, which results in easiness for repairs and service. Furthermore, all our units are equipped with neodymium magnets in the tank's bottom to prevent metal particles from entering the system.
  - ▶ Consistency and versatility in our parts and structural components, making them "Universal" in our own line of different forklift models. The vast majority of our parts and components can be used, installed and be interchanged among our own machines, and this creates great benefits for our distributors in terms of logistics, investment, stock, and technical training.
  - ▶ A wide variety of extra accessories. We listen to the particular needs of our customers and can always add any demanded item. Among others, led lights, dome lights, heated seats, air conditioning, cabin heater, wiper water jet, multimedia system with Bluetooth hands free, USB charger, closed cabin, fuel water separator, diesel particles filter (DPF), spark arrestor, different tire pattern, customized paint, person anti-collision rear view cameras and more.
- 



# OUR PRODUCT LINE

## MP TYPE

The MP type (Multi Purpose) begins with the 3 ton lifting capacity model and it goes up to 5- and 7- ton models. All three models share the same steering axle system, which offers a machine capable of working inside narrow areas, and still have 4WD power to work in off road applications.

This offers the customer a real multipurpose forklift truck, with the ability to work in a variety of applications in industrial and off-road environments, thanks to its compact size and amazing turning radius.

## RT TYPE

The RT type (Rough Terrain) is aimed for a market where a pure 4x4 traction system is needed. For this type we manufacture the 2 and 2.5 ton lifting capacity models.

The RT type is equipped with double differential traction, which gives this machine a superb performance in really bad rough terrain conditions like the ones found in the agriculture and mining industries, factory farms, extreme low temperature terrains with ice and snow, and mud areas where a double differential traction is compulsory.

## E4 TYPE

We achieved great success when we presented our MP type and its great maneuverability, and now we will do it again with our E4 type (Electric 4x4). This is the first 4x4 rough terrain forklift fully powered by electricity. With a capacity range of 2 and 2.5 tons (same as the RT type), we offer our customers a solution to solve their fork-lifting applications without noises or fuel emissions.





The Bomaq logo is displayed in a yellow box with a black border. The word "bomaq" is written in a bold, black, sans-serif font.

**B 30 MP**

**3 TON  
ALL TERRAIN 4 WHEEL  
DRIVE DIESEL FORKLIFT**



Sold & Serviced by  
**GENEX INDUSTRIAL EQUIPMENTS LLC**  
DUBAI, U.A.E  
Helpline: +971-556461225  
sales@genex.ae, www.genex.ae

### **KEY FEATURES:**

BEST 4WD MANEUVERABILITY  
FIRST CLASS COMPONENTS  
HYDROSTATIC TRANSMISSION  
WIDE APPLICATION AREA  
AMAZING SERIAL EQUIPMENT  
EASY MAINTENANCE  
ROBUST AND RELIABLE  
COMPACT SIZE



## BOMAQ B30 MP 4WD TECHNICAL SPECIFICATIONS

### MAIN FEATURES

Manufacturer	BOMAQ INDUSTRIES		
Model	B30 MP 4WD		
Powered	type	Diesel	
Driver position	position	Seated	
Front / rear tyre type	(Pneumatic/Solid)	Pneumatic / Pneumatic	
Number of wheels / powered wheels	n / n	4 / 4	
Capacity	Q	3000 (Kg)	6614 (Lb)
Load center	C.O.G.	500 (mm)	20 (in)

### DIMENSIONS

Total length with std. forks (1200 mm / 47 in)	L	4230 (mm)	167 (in)
Length to forks carriage	L2	3030 (mm)	119 (in)
Distance between axles	y	1875 (mm)	74 (in)
Distance from carriage to front axle	x	655 (mm)	26 (in)
Rear overhung distance	z	500 (mm)	20 (in)
Minimum ground clearance	m	250 (mm)	10 (in)
Maximum height (Std. cabin)	h6 (Std. cabin)	2100 (mm)	83 (in)
	h6 (Low cabin)	1990 (mm)	78 (in)
Overall width	B	1500 (mm)	59 (in)
Front axle track width	b1	1170 (mm)	46 (in)
Rear axle track width	b2	1285 (mm)	51 (in)
Turning radius	Wa	2690 (mm)	106 (in)
Aisle width (europallet 1200 x 800 mm)	Ast	4645 (mm)	183 (in)

### WEIGHTS (with std. mast & forks)

Total weight without load	4782 (Kg)	10542 (Lb)
Maximum load on front axle	7350 (Kg)	16204 (Lb)
Maximum load on rear axle	2280 (Kg)	5027 (Lb)
Total weight with load	7782 (Kg)	17156 (Lb)

### TYRES

Front tyres sizes & patterns	MPT Standard	12 x 16.5
	Agriculture	11.5 / 80 - 15.3
	Industrial	12 x 16.5
Rear tyres sizes & patterns	MPT Standard	27 x 8.50 - 15
	Agriculture	7.00 x 12
	Industrial	7.00 x 12
Service brake (on front axle)	type	Multidisc oil wet & master cyl.
Parking brake (on front axle)	type	Multidisc oil wet negative hyd.

### PERFORMANCES (with std. mast & forks)

Maximum traveling speed with load	20 (Kph)	12 (Mph)
Maximum traveling speed without load	24 (Kph)	15 (Mph)
Maximum slope with / without load	%	30 / 40
Transmission type & brand	Linde Hydrostatic	
Service pump pressure	250 (bar)	3626 (PSI)
Transmission pressure	420 (bar)	6092 (PSI)





## BOM AQ B30 MP 4WD TECHNICAL SPECIFICATIONS

### ENGINE (standard)

Manufacturer & Model (diesel)		Perkins 404D22 IOPU	
Maximum power (2800 rpm)	ISO 1585	48,7 (BHP)	36,3 (KW)
Maximum torque		142,7 (Nm)	105,2 (lbf ft)
Emmissions certification	EU / EPA	STAGE IIIB / TIER 4 INTERIM	

### ENGINE (optional)

Manufacturer & Model (diesel)		Caterpillar C2.2	
Maximum power (2800 rpm)	ISO 1585	48,7 (BHP)	36,3 (KW)
Maximum torque		142,7 (Nm)	105,2 (lbf ft)
Emmissions certification	EU / EPA	STAGE IIIB / TIER 4 INTERIM	

### ENGINE (optional)

Manufacturer & Model (diesel)		Kubota V2403-M-E3B	
Maximum power (2700 rpm)	ISO 1585	48,9 (BHP)	36,5 (KW)
Maximum torque		160 (Nm)	118 (lbf ft)
Emmissions certification	EU / EPA	STAGE IIIA / TIER 4 INTERIM	

### ENGINE (optional)

Manufacturer & Model (gas/LPG)		Kubota WG2503-L-E3	
Maximum power (2700 rpm)	ISO 1585	61,7 (BHP)	46,0 (KW)
Maximum torque		178 (Nm)	131 (lbf ft)
Emmissions certification	EPA / CARB	TIER 2 / TIER 3	

### MAST

Standard mast	Duplex	2900 (mm)	114 (in)
Integrated side shift		yes	
4th valve to the carriage		yes	
Carriage type	DIN 15173	FEM III B	
Standard forks (width x thickness x length)	(mm) / (in)	100x45x1200	3,9x1,7x47
Tilting angles front / back	° / °	10	12
Maximum load lifting speed		0,4 (m/s)	1,3 (ft/s)
Maximum load lowering speed		0,4 (m/s)	1,3 (ft/s)

### NOISE EMISSIONS

Outside the machine, engine idle	dB	55,4 Lmin	68,7 Leq
At operator's head, closed cabin, engine idle	dB	65,9 Lmin	66,3 Leq
At operator's head, closed cabin, engine at full throttle	dB	34,1 Lmin	77,8 Leq

### MISCELLANEOUS

Fuel tank capacity		70 (L)	15,4 (gal)
Hydraulic tank capacity		90 (L)	19,8 (gal)
Coolant capacity		12 (L)	2,6 (gal)
Engine oil capacity		10 (L)	2,2 (gal)
Electrical system voltage		12 (V)	

BOM AQ B30 MP 4WD TECHNICAL SPECIFICATIONS © 2.019

ALL THE INFORMATION PRESENTED HERE CORRESPONDS TO THE STANDARD MODEL, IF YOU NEED FURTHER INFORMATION PLEASE CONTACT YOUR CLOSEST DEALER.

DUE TO OUR CONTINUOUS IMPROVEMENT POLICY, BOM AQ INDUSTRIES RESERVES THE RIGHT TO MODIFY THIS INFORMATION WITHOUT PREVIOUS COMMUNICATION.

[www.bomaq.com](http://www.bomaq.com)





## BOMAQ B50 MP 4WD TECHNICAL SPECIFICATIONS

### MAIN FEATURES

Manufacturer	BOMAQ INDUSTRIES		
Model	B50 MP 4WD		
Powered	type	Diesel	
Driver position	position	Seated	
Front / rear tyre type	(Pneumatic/Solid)	Pneumatic / Pneumatic	
Number of wheels / powered wheels	n / n	4 / 4	
Capacity	Q	5000 (Kg)	11023 (Lb)
Load center	C.O.G.	600 (mm)	24 (in)

### DIMENSIONS

Total length with std. forks (1500 mm / 59 in)	L	5250 (mm)	207 (in)
Length to forks carriage	L2	3750 (mm)	148 (in)
Distance between axles	y	2250 (mm)	89 (in)
Distance from carriage to front axle	x	850 (mm)	33 (in)
Rear overhung distance	z	650 (mm)	26 (in)
Minimum ground clearance	m	275 (mm)	11 (in)
Maximum height (Std. cabin)	h6	2225 (mm)	88 (in)
Overall width	B	1950 (mm)	77 (in)
Front axle track width	b1	1530 (mm)	60 (in)
Rear axle track width	b2	1658 (mm)	65 (in)
Turning radius	Wa	3280 (mm)	129 (in)
Aisle width (europallet 1200 x 800 mm)	Ast	5430 (mm)	214 (in)

### WEIGHTS (with std. mast & forks)

Total weight without load	9078 (Kg)	20014 (Lb)
Maximum load on front axle	12856 (Kg)	28343 (Lb)
Maximum load on rear axle	4444 (Kg)	9797 (Lb)
Total weight with load	14078 (Kg)	31037 (Lb)

### TYRES

Front tyres sizes & patterns	MPT Standard	16/70-20
Rear tyres sizes & patterns	MPT Standard	11.5/80-15.3
Service brake (on front axle)	type	Multidisc oil wet & master cyl.
Parking brake (on front axle)	type	Multidisc oil wet negative hyd.

### PERFORMANCES (with std. mast & forks)

Maximum traveling speed with load	20 (Kph)	12 (Mph)
Maximum traveling speed without load	24 (Kph)	15 (Mph)
Maximum slope with / without load	%	30 / 40
Transmission type & brand	Linde Hydrostatic	
Service pump pressure	250 (bar)	3626 (PSI)
Transmission pressure	420 (bar)	6092 (PSI)





## BOMAQ B50 MP 4WD TECHNICAL SPECIFICATIONS

### ENGINE (standard)

Manufacturer	Perkins		
Model	1104D44T		
Maximum power	ISO 1585	83,1 (BHP)	62,0 (KW)
Maximum torque		353,0 (Nm)	260,4 (lbf ft)
Maximum rate	2200 (rpm)		
Emissions certification	EU / EPA	STAGE IIIA / TIER 3	

### ENGINE (optional)

Manufacturer	Caterpillar		
Model	C3.4B		
Maximum power	ISO 1585	74,3 (BHP)	55,4 (KW)
Maximum torque		318,0 (Nm)	234,5 (lbf ft)
Maximum rate	2200 (rpm)		
Emissions certification	EU / EPA	STAGE IIIB / TIER 4 FINAL	

### ENGINE (optional)

Manufacturer	Köhler		
Model	KDI 2504 TCR		
Maximum power	ISO 1585	74,3 (BHP)	55,4 (KW)
Maximum torque		300 (Nm)	221 (lbf ft)
Maximum rate	2600 (rpm)		
Emissions certification	EU / EPA	STAGE IIIB / TIER 4 FINAL	

### MAST

Standard mast	Duplex	3300 (mm)	130 (in)
Integrated side shift	yes		
4th valve to the carriage	yes		
Carriage type	DIN 15173	FEM IV B	
Standard forks (width x thickness x length)	(mm) / (in)	130x60x1500	5,1x2,4x59
Tilting angles front / back	° / °	10	12
Maximum load lifting speed		0,4 (m/s)	1,3 (ft/s)
Maximum load lowering speed		0,4 (m/s)	1,3 (ft/s)

### NOISE EMISSIONS

Outside the machine, engine idle	dB	49 Lmin	72,4 Leq
At operator's head, closed cabin, engine idle	dB	72,7 Lmin	73,3 Leq
At operator's head, closed cabin, engine at full throttle	dB	71 Lmin	79,3 Leq

### MISCELLANEOUS

Fuel tank capacity	120 (L)	26,4 (gal)
Hydraulic tank capacity	120 (L)	26,4 (gal)
Coolant capacity	17 (L)	3,7 (gal)
Engine oil capacity	10 (L)	2,2 (gal)
Electrical system voltage	12 (V)	





## BOMAQ B70 MP 4WD TECHNICAL SPECIFICATIONS

### MAIN FEATURES

Manufacturer	BOMAQ INDUSTRIES		
Model	B70 MP 4WD		
Powered	type	Diesel	
Driver position	position	Seated	
Front / rear tyre type	(Pneumatic/Solid)	Pneumatic / Pneumatic	
Number of wheels / powered wheels	n / n	4 / 4	
Capacity	Q	7000 (Kg)	15432 (Lb)
Load center	C.O.G.	600 (mm)	24 (in)

### DIMENSIONS

Total length with std. forks (1500 mm / 59 in)	L	5800 (mm)	228 (in)
Length to forks carriage	L2	4300 (mm)	169 (in)
Distance between axles	y	2650 (mm)	104 (in)
Distance from carriage to front axle	x	1000 (mm)	39 (in)
Rear overhung distance	z	650 (mm)	26 (in)
Minimum ground clearance	m	300 (mm)	12 (in)
Maximum height (Std. cabin)	h6	2225 (mm)	88 (in)
Overall width	B	2250 (mm)	89 (in)
Front axle track width	b1	2000 (mm)	79 (in)
Rear axle track width	b2	2000 (mm)	79 (in)
Turning radius	Wa	3465 (mm)	136 (in)
Aisle width (europallet 1200 x 800 mm)	Ast	- (mm)	- (in)

### WEIGHTS (with std. mast & forks)

Total weight without load	10678 (Kg)	23541 (Lb)
Maximum load on front axle	16260 (Kg)	35848 (Lb)
Maximum load on rear axle	5644 (Kg)	12443 (Lb)
Total weight with load	17678 (Kg)	38973 (Lb)

### TYRES

Front tyres sizes & patterns	MPT Standard	16/70-20
Rear tyres sizes & patterns	MPT Standard	11.5/80-15.3
Service brake (on front axle)	type	Multidisc oil wet & master cyl.
Parking brake (on front axle)	type	Multidisc oil wet negative hyd.

### PERFORMANCES (with std. mast & forks)

Maximum traveling speed with load	20 (Kph)	12 (Mph)
Maximum traveling speed without load	24 (Kph)	15 (Mph)
Maximum slope with / without load	%	30 / 40
Transmission type & brand	Linde Hydrostatic	
Service pump pressure	250 (bar)	3626 (PSI)
Transmission pressure	420 (bar)	6092 (PSI)





## BOMAQ B70 MP 4WD TECHNICAL SPECIFICATIONS

### ENGINE (standard)

Manufacturer	Perkins		
Model	1104D44T		
Maximum power	ISO 1585	99,8 (BHP)	74,4 (KW)
Maximum torque		445 (Nm)	328 (lbf ft)
Maximum rate	2200 (rpm)		
Emmissions certification	EU / EPA	STAGE IIIA / TIER 3	

### ENGINE (optional)

Manufacturer	Caterpillar		
Model	C3.4B		
Maximum power	ISO 1585	99,9 (BHP)	74,5 (KW)
Maximum torque		318,0 (Nm)	234,5 (lbf ft)
Maximum rate	2200 (rpm)		
Emmissions certification	EU / EPA	STAGE IIIB / TIER 4 FINAL	

### ENGINE (optional)

Manufacturer	Köhler		
Model	KDI 3404 TCR		
Maximum power	ISO 1585	100,6 (BHP)	75,0 (KW)
Maximum torque		480 (Nm)	354 (lbf ft)
Maximum rate	2400 (rpm)		
Emmissions certification	EU / EPA	STAGE IV / TIER 4 FINAL	

### MAST

Standard mast	Duplex	3300 (mm)	130 (in)
Integrated side shift	yes		
4th valve to the carriage	yes		
Carriage type	DIN 15173	FEM IV B	
Standard forks (width x thickness x length)	(mm) / (in)	150x65x1500	5,9x2,6x59
Tilting angles front / back	° / °	10	12
Maximum load lifting speed		0,4 (m/s)	1,3 (ft/s)
Maximum load lowering speed		0,4 (m/s)	1,3 (ft/s)

### NOISE EMISSIONS

Outside the machine, engine idle	dB	- Lmin	- Leq
At operator's head, closed cabin, engine idle	dB	- Lmin	- Leq
At operator's head, closed cabin, engine at full throttle	dB	- Lmin	- Leq

### MISCELLANEOUS

Fuel tank capacity	90 (L)	19,8 (gal)
Hydraulic tank capacity	120 (L)	26,4 (gal)
Coolant capacity	17 (L)	3,7 (gal)
Engine oil capacity	10 (L)	2,2 (gal)
Electrical system voltage	12 (V)	



## BOMAQ B100 MP 4WD TECHNICAL SPECIFICATIONS

### MAIN FEATURES

Manufacturer	BOMAQ INDUSTRIES		
Model	B100 MP 4WD		
Powered	type	Diesel	
Driver position	position	Seated	
Front / rear tyre type	(Pneumatic/Solid)	Pneumatic / Pneumatic	
Number of wheels / powered wheels	n / n	4 / 4	
Capacity	Q	10000 (Kg)	22046 (Lb)
Load center	C.O.G.	600 (mm)	24 (in)

### DIMENSIONS

Total length with std. forks (1500 mm / 59 in)	L	6500 (mm)	256 (in)
Length to forks carriage	L2	5000 (mm)	197 (in)
Distance between axles	y	3100 (mm)	122 (in)
Distance from carriage to front axle	x	1150 (mm)	45 (in)
Rear overhung distance	z	750 (mm)	30 (in)
Minimum ground clearance	m	250 (mm)	10 (in)
Maximum height (Std. cabin)	h6	2300 (mm)	91 (in)
Overall width	B	2400 (mm)	94 (in)
Front axle track width	b1	2000 (mm)	79 (in)
Rear axle track width	b2	2000 (mm)	79 (in)
Turning radius	Wa	- (mm)	- (in)
Aisle width (europallet 1200 x 800 mm)	Ast	- (mm)	- (in)

### WEIGHTS (with std. mast & forks)

Total weight without load	19800 (Kg)	43651 (Lb)
Maximum load on front axle	27145 (Kg)	59845 (Lb)
Maximum load on rear axle	8300 (Kg)	18298 (Lb)
Total weight with load	29800 (Kg)	65698 (Lb)

### TYRES

Front tyres sizes & patterns	MPT Standard	TWIN 10.00-20
Rear tyres sizes & patterns	MPT Standard	10.00-20
Service brake (on front axle)	type	Multidisc oil wet & master cyl.
Parking brake (on front axle)	type	Multidisc oil wet negative hyd.

### PERFORMANCES (with std. mast & forks)

Maximum traveling speed with load	20 (Kph)	12 (Mph)
Maximum traveling speed without load	24 (Kph)	15 (Mph)
Maximum slope with / without load	%	30 / 40
Transmission type & brand	Linde Hydrostatic	
Service pump pressure	250 (bar)	3626 (PSI)
Transmission pressure	420 (bar)	6092 (PSI)





## BOMAQ B100 MP 4WD TECHNICAL SPECIFICATIONS

### ENGINE (standard)

Manufacturer	Perkins		
Model	1106D-E70TA		
Maximum power	ISO 1585	155,6 (BHP)	116,0 (KW)
Maximum torque		1050 (Nm)	774 (lbf ft)
Maximum rate	2200 (rpm)		
Emmissions certification	EU / EPA	STAGE IIIA / TIER 3	

### MAST

Standard mast	Duplex	3300 (mm)	130 (in)
Integrated side shift	yes		
4th valve to the carriage	yes		
Carriage type	DIN 15173	FEM IV B	
Standard forks (width x thickness x length)	(mm) / (in)	150x65x1500	5,9x2,6x59
Tilting angles front / back	° / °	10	12
Maximum load lifting speed		0,4 (m/s)	1,3 (ft/s)
Maximum load lowering speed		0,4 (m/s)	1,3 (ft/s)

### NOISE EMISSIONS

Outside the machine, engine idle	dB	- Lmin	- Leq
At operator's head, closed cabin, engine idle	dB	- Lmin	- Leq
At operator's head, closed cabin, engine at full throttle	dB	- Lmin	- Leq

### MISCELLANEOUS

Fuel tank capacity	90 (L)	19,8 (gal)
Hydraulic tank capacity	120 (L)	26,4 (gal)
Coolant capacity	17 (L)	3,7 (gal)
Engine oil capacity	10 (L)	2,2 (gal)
Electrical system voltage	12 (V)	

BOMAQ B100 MP 4WD TECHNICAL SPECIFICATIONS. LAST UPDATE APRIL 2020.

ALL THE INFORMATION PRESENTED HERE CORRESPONDS TO THE STANDARD MODEL, IF YOU NEED FURTHER INFORMATION PLEASE CONTACT YOUR CLOSEST DEALER.

DUE TO OUR CONTINUOUS IMPROVEMENT POLICY, BOMAQ INDUSTRIES RESERVES THE RIGHT TO MODIFY THIS INFORMATION WITHOUT PREVIOUS COMMUNICATION.

[www.bomaq.com](http://www.bomaq.com)



**MEET  
THE  
LEADER  
OF  
ROUGH  
TERRAIN**

**bomaq**



**ROUGH TERRAIN FORKLIFT**

**5 TON**

**MADE IN  
SPAIN**

