



Create future Data & IT Service & Consulting

데이터스텝 소개

2023.06

HEE-SAM SONG

heesamsong@datastep.world



At a glance

DataStep은 2022.02 설립된 산업형 DT(Digital Transformation) 서비스 및 컨설팅 전문 기업으로, 특히 데이터 및 3D 기반으로 DT 서비스를 제공합니다.

FOUNDED	<p><i>Founder : Yu-Kyoung Yang</i> Founded : 2022.02 Address : 50, Eulji-ro, Jung-gu, Seoul, Republic of Korea</p>
FOCUS	<p>Delivers real-time data and value Through ① <i>Time Series Database</i>, ② <i>Digital Twin</i> ③ <i>IoT services</i></p>
DIFFERENCE	<ul style="list-style-type: none">• <i>Time Series Database(InfluxDB) Distributor in Korea</i>• <i>Experience-based IoT service</i>
Major Customer	
BUSINESS MODEL	<p><i>Subscription Model</i> Pay for what you use; Pay how you want.</p>



시계열 데이터베이스 InfluxDB 소개

2023.06



Create future Data & IT Service & Consulting



한국 총판(Korea Distributor)



데이터기반의 디지털 트윈 구축

InfluxDB는 구글 Go 언어로 개발된 솔루션으로 산업용 “대용량 쓰기 작업과 쿼리 처리”를 위한 최고의 Database(시계열 데이터베이스)

Physical

Virtual

실시간 데이터 수집/분석

1. Huge volumes
2. Real time and time sensitive
3. Time-stamped
4. Generated in regular (metric) and irregular (event) time periods

At a glance

FOUNDED	2013 <i>San Francisco HQ, 122+ in technical functions</i>
FOCUS	Where developers <i>build real-time applications</i> for IoT, Analytics and Cloud native services
DIFFERENCE	<i>One platform;</i> one API across Clouds and On-Prem Ingest, query, story using common tools regardless of architecture
OSS FOUNDATION	<i>1300+ Customers and 550,000 daily active OSS deployments;</i> Google , Cisco, SAP, Comcast, Tesla, Siemens, PTC, Honeywell, JP Morgan Chase
BUSINESS MODEL	Subscription Model Pay for what you use; Pay how you want. Credit card, cloud provider, annual contract

RANK	DBMS
MAR 2022	
1	InfluxDB
2	Kdb+
3	Oracle TimesTen In-Memory Database
4	Graphite
5	TimescaleDB
6	Apache Druid
7	RRDtool
8	OpenTSDB
9	DolphinDB
10	Fauna

글로벌 시계열 DB Leader Group

Source: DB-Engines

Large and Growing Customer Base

1300+
Customers

ThermoFisher
SCIENTIFIC

Schneider
Electric

Internet of things

TESLA

ptc

Lam
RESEARCH

nest

equinor

Infrastructure & real-time apps

SAP

CISCO

salesforce

IBM

coupa

BNP PARIBAS

BNP PARIBAS

Expedia

Bethesda

CapitalOne

COMCAST

DISCOVER

SIEMENS



IIOT MONITORING

Created a solution that

- enhances **scalability** across the organization
- enables **real-time alerting**
- improves **predictive maintenance**

by collecting 100K IoT sensor metrics per second from their smart factories

ASML

01 / 30

Changing the world, one nanometer at a time

ASML gives the world's leading chipmakers the power to mass produce patterns on silicon

The ASML website header features a dark background with a top-down view of a large, circular, light-colored structure, possibly a lens or a wafer, with several small figures of people scattered across it. The ASML logo is in the top left, and a search icon is in the top right. A vertical counter '01 / 30' is on the left side.

Products

Platforms Designed to Perform

Semtech is a multinational technology innovator, enabling solutions that fuel a safer, more productive, more sustainable, and socially focused planet.

BUY NOW

The Semtech website header features a background image of a city skyline at dusk or dawn, with buildings lit up. The word 'Products' is centered above the main headline. A 'BUY NOW' button is located at the bottom center.

Target Customers

제조사

(삼성전자/SK하이닉스/
대덕전자 등 제조기업)

환경/에너지

(환경관리/
에너지 생산 기업)

서비스

(카카오, 금융 등 서비스 기업)

산업형 디지털트윈 솔루션 TIM FLOW 소개

2023.06



Create future Data & IT Service & Consulting

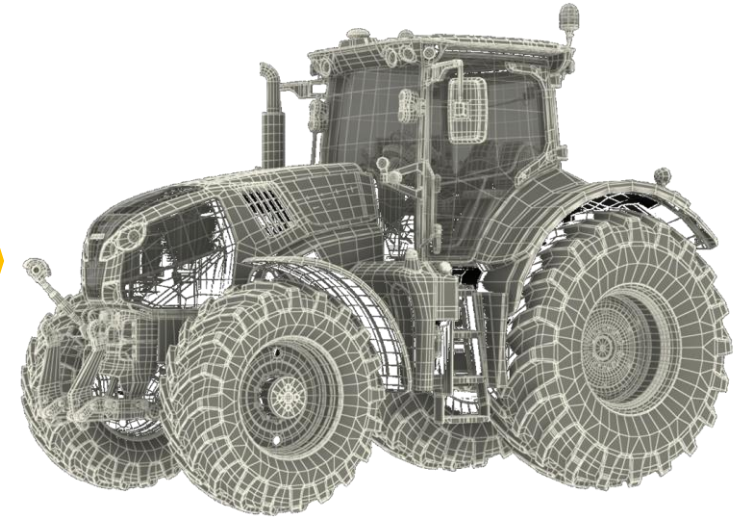


3D 모델 기반의 Digital Twin 구축



Physical

- ① Modelling
- ② Connect
- ③ Monitoring
- ④ Analytics
- ⑤ Control



Digital World

왜 디지털 트윈인가? 산업 현장 실시간 모니터링 / 고장 예측 / 시뮬레이션 / 안전

At a glance

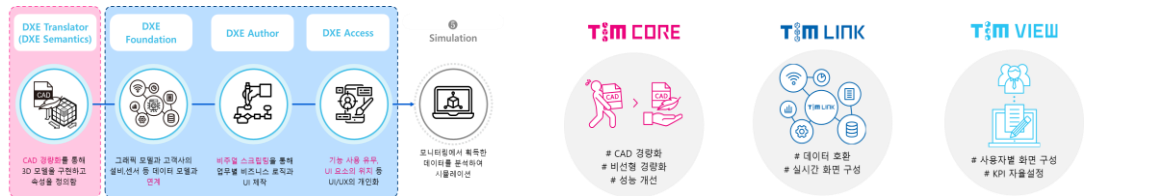
2017.12.26일에 설립된 산업형 디지털 트윈 전문기업으로 현대중공업, 현대차, 한국우주항공(KAI) 등 대기업 중심의 디지털 트윈 사업을 수행함.

TIM SOLUTION

대표 : 김 지인
 주소 : (본사) 울산광역시 중구 종가로 313 타워더모스트
 (지사) 서울 중구 을지로
 직원 : 30 명



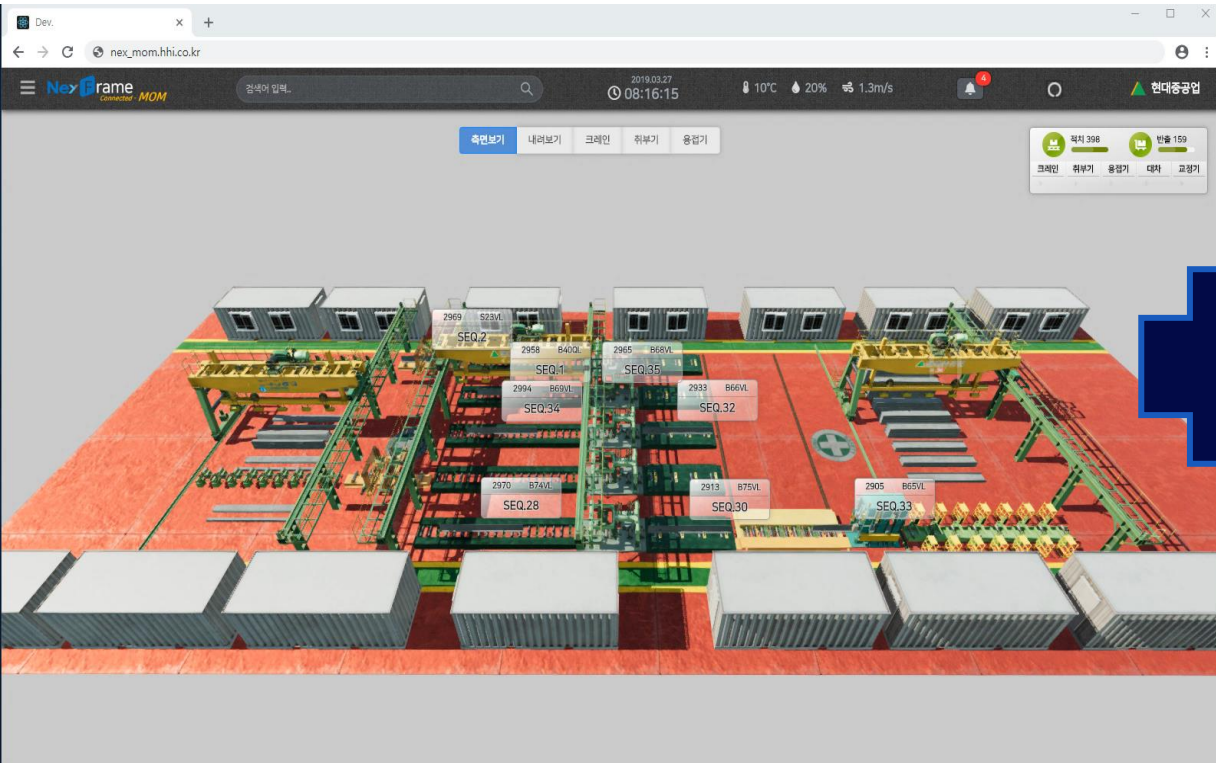
현장 도메인(비즈니스) 및 국내 최다 PJT기반 디지털 트윈 플랫폼(TIM FLOW), DXE M&S(시뮬레이션) 솔루션과 기술을 보유하고 있음



<p>Hyundai Heavy Industries</p>	<p>Korea Aerospace Industries</p>	<p>Korea Hydro & Nuclear Power Co., Ltd.</p>	<p>Hyundai Motor Company</p>
<p>SK Hynix</p>	<p>동서발전</p>	<p>Daewoo Shipbuilding &</p>	<p>Mitsubishi Corporation</p>

산업형 디지털트윈이란

Factory Digital Twin
(관제/보전/시뮬레이션)



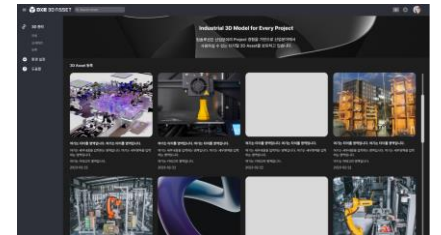
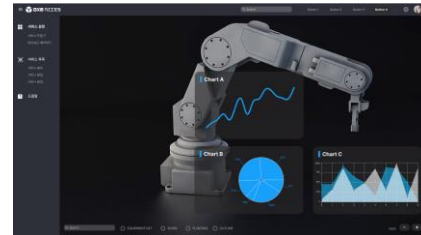
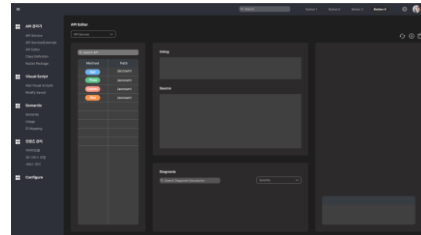
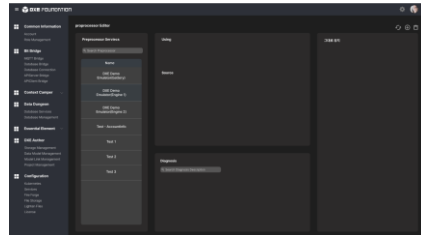
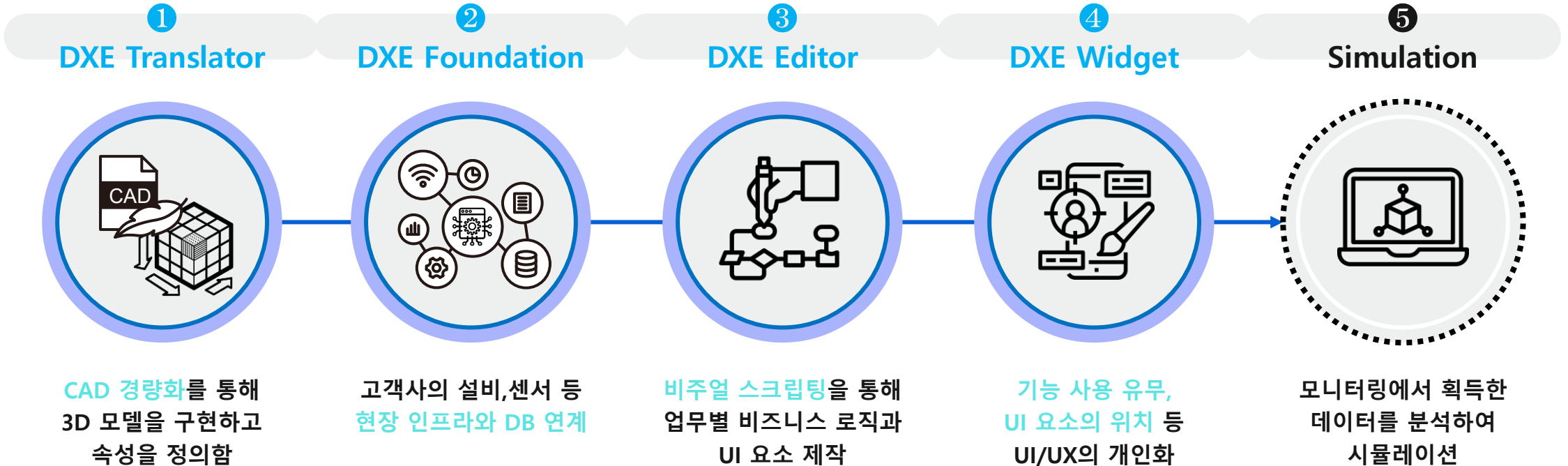
Metaverse Digital Twin
(Office 등 가상환경에서 협업/소통)



통합

TIM FLOW 솔루션

고객사가 변화관리 가능한 End-to-End 서비스를 제공함(즉, 3D Asset부터 시각화 서비스까지)
 핵심기술 : DXE Translator(3D 모델 기반으로 다양한 형태로 구조 경량화 및 최적화)



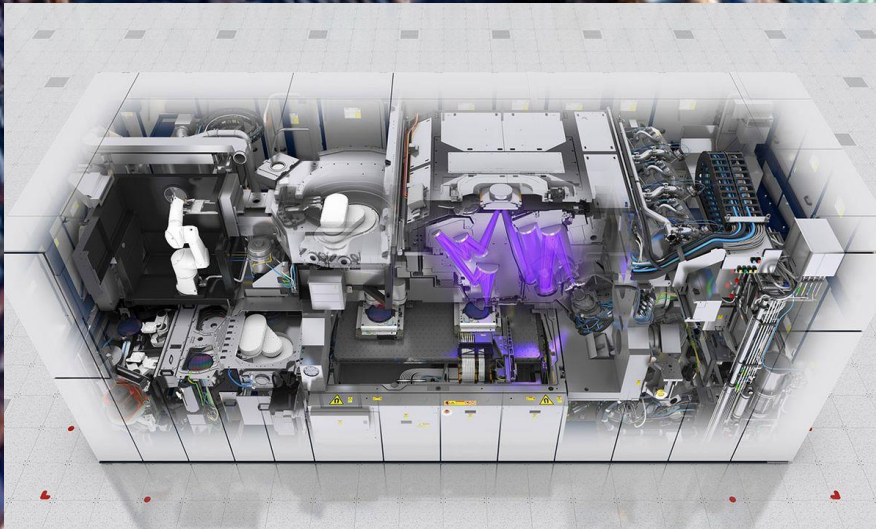
Target Field

✓
사전 교육(트레이닝)
(설비교육/안전교육)

공정 모니터링
(설비 상태 등 연계)

✓
설비보전
(유지보수 등)

시뮬레이션
(사전 공정라인 등)





Create future Data & IT Service & Consulting