



NELSON TASMAN  
METHODIST PARISH

## NEWSLETTER JUNE 2025

Every now and then, I find myself thinking about those who lived long before us, in the premodern era. They dealt with the same basic questions about life - love, survival, fear, hope - but their world was much smaller. They couldn't peek beyond their own villages or tribes, and often, the only news they had came from the people right next door. Neighbouring tribes weren't just strangers; they were potential threats, enemies even. Their sense of the world was limited, and so was their understanding of the hardships and struggles happening far away.

Today, it's a completely different story. We're bombarded daily with news from every corner of the globe - wars, crises, disasters. The constant stream of grim headlines can be overwhelming. We might shut off the radio or put our phones away, trying to escape the weight of it all, but that's not the reality we live in. We're connected in ways that no one before us could have imagined, and that connection comes with its own challenges.

So, what do I do with all these issues that feel so big and out of my control? First, I allow myself to feel the anger and frustration that arise from witnessing suffering I can't immediately fix. Those feelings are important - they remind me I care. Then, I reflect on how I might actually make a difference, even in a small way, for those caught in the middle of conflict. I talk to others about what's happening, hoping to spark understanding and compassion. Finally, I take whatever actions I can - no matter how small - to help.

I'm just one person, but together with my church family, we're doing our best to support those around us. On 4 May, Jill Hawkey, the director of the Christchurch Methodist Mission, visited our church to share her insights and inspire us. That visit helped us see new ways to support one another. I'm also happy to introduce Deb Cullen, who has joined us to explore how our church can better serve the wider community. Deb will be working part-time from our church office, dedicating three hours twice a week to this mission. It's an exciting new chapter for Deb and for all of us, and I'm eager to see where this journey takes us as we look for ways to help those in need right here at home and beyond.

*Martin*

## INTRODUCING DEB

Hi there! I'm Deb Cullen your new Support Service provider. I am very excited for the opportunities our new pilot project, operating from the Parish office, will offer over the next year.



Providing support on many levels, I see this as an informative role, protecting those who are vulnerable and guiding them to better situations.

Facilitating achievement in people is so rewarding –sometimes this comes from just a little bit of help and other times it may be over months.

Being a mum of 5 I thrive on the versatility that comes from working through different challenges. I also enjoy impressing my grandkids with my sling shot skills!

My hope is that this facility will become recognised and grow in our Community. Working together we will be able to share knowledge to teach, empower and connect.



## PARISH COUNCIL MEETING SUMMARY 18 JUNE 2025

- \* BUWT has received a \$10,000 grant from Green Gables Trust.
- \* The meeting agreed to approve Jill Hawkey's suggestion of a pilot project with Debra Cullen working in a social support position 6 hours a week from the church office, She will start 1 July 2025 for one year.
- \* Approval was also given to the Community Support Team to offer sponsorship for 1 or 2 young people from Big Brothers Big Sisters or Grandparents Raising Grandchildren to go on the Spirit of Adventure in January 2026.
- \* The Community Support team is to look into additional signage for the church and the Social Support work.



## THE OFFERTORY GIFTING ONE ANOTHER!



Sometimes we see things happening in church and yet we take little notice... As the clergy wait to receive The Offertory at the front of the church we can see that some struggle with the weight of the basket of groceries. In one way that's great, but in another it's terrible! This was particularly apparent on Palm Sunday. What to do?

So I asked Woolworths, Stoke, to donate a trolley for use in our church. They have generously and kindly agreed. Today as part of our Offertory, we are using this trolley.

I trust that over time it will be a blessing that all can use - placing the gifts directly into the trolley as we come to church, then wheeling it easily to the front.

We remember that we do this all to the glory of God!

Rev David Moynan

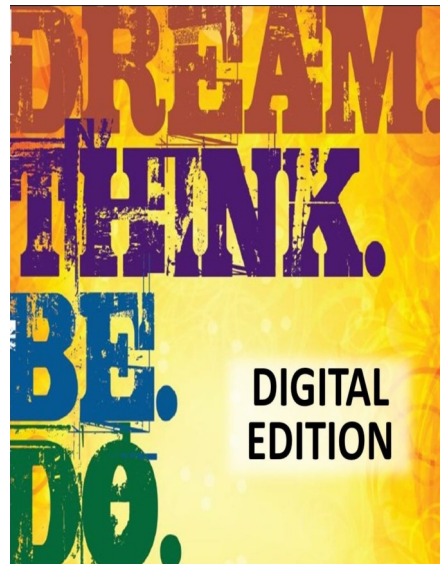


---

## FAITH EXPLORING GROUP

We will resume the Faith Exploring Group on Tuesday at **2pm on 1 July**. The study material for this session will be "Dream.Think.Be.Do."

"An overview of progressive Christianity for young adults, DreamThinkBeDo features the insights of over twenty-five theologians and teachers at the top of their game. Each of the twenty self-standing sessions contains a 20min digital video segment drawn from the critically acclaimed LtQ2 series, updated with connecting narrations, graphics & music to engage your young adults. Bundled in four five-session modules, each session is divided into convenient and easily navigable chapters."



## GETTING TO KNOW US

*Each issue we hope to find out a little more about each other by answering a few questions. This month we met with recently arrived Rev Ron & Peggy Hoar. They have come from the UK - via 8yrs in Palmerston North - & join our worship online from Kensington Court.*

Ron was a Methodist Minister in the UK for over 40yrs and served as President of the Methodist Conference, 1991-92. He is a committed ecumenist and campaigner for racial justice. By choice, he spent almost all his ministry in large cities and towns, involved with youth work and race relations. These included Manchester (as Chairman of the District), Bristol and London, where he was Assistant Minister at Westminster Central Hall.



Ron's father was a Local Preacher and his mother a Class Leader at the local Methodist Church. After leaving school at 16 and 2yrs National Service with the RAF, he offered for the Methodist Ministry, marrying his childhood sweetheart, Peggy, just before his ordination - as soon as Methodist Ministers were allowed to marry- after 10yrs and 1 week of courtship.



During their ministry Ron relished leadership roles and searching out ever new methods of serving God, often through setting up projects and seeing their community benefits. Peggy loved visiting and meeting different people inside and out of the Methodist family and being able to help people in need, doing God's work.

Both recognise that being in hospital care in their mid 90's means their contributions are now mostly through prayer rather than physical hands-on roles.

Their prayers for us are to make the Gospel relevant to our immediate situation and be conscious of the many needs in our community. Peggy also prays we work together to reach a better understanding of each other, not just as a church but with other churches and worship centres in our region.



### NELSON TASMAN METHODIST PARISH

Christ Focused & Community Centred

**Minister**  
**Parish Stewards**  
**Newsletter**

Rev Martin Oh 970 6990 martinandsun@gmail.com  
Wayne Chapman 547 2326 | Nadia Madill 547 8452  
Caroline Hoar caroline@studio32.nz