

Two years ago, Dave and Christina relocated to Wakefield. After a period of 'church shopping', they found themselves drawn to Nelson Tasman Methodist Church. Here, they appreciate the worship space—especially the window, which offers both a point of focus and inspiration. The couple certainly feel at home with the culture of our service, particularly many elements of tradition and using the 'With One Voice' hymn book.



Recognising the steadfast nature of our congregation, Dave and Christina share in the prayer for the health and survival of our church, especially concerning the wellbeing of our older members. They are also inspired by the parish's dedication to social justice and the many good works undertaken by our congregation.

Christina works locally at One Dental, while Dave teaches piano and keyboard (complete with a grand piano in their lounge). Some of his students come from the Brethren Church, however he welcomes students from all backgrounds. Dave's passion for organs and their role in worship is evident, most recently demonstrated by his efforts in facilitating the arrival of our new church organ—a project that's already earned praise for its beautiful tone.

Dave and Christina have enjoyed making new friends at our church, sharing interests in Classic motorcycles and Classic cars. They look forward to getting to know more members of our parish and continuing to contribute to the vibrant life of our community.

Life is a collection of fleeting moments, some ordinary and some deeply transformative. Over my many years in ministry, I have accumulated a rich tapestry of memories. These experiences are not all defined by sunshine and joy; the path of a presbyter involves navigating both the light and the shadows of life. Yet, I am often reminded that the most profound lessons in faith frequently emerge from our moments of greatest vulnerability.

This was highlighted during our executive officers' meeting back in February. As I outlined my travel plans to Christchurch for Sunmi's upcoming surgery, I was focused simply on the logistics, fully intending to use my annual leave for the two-week recovery period. I had not even considered requesting compassionate leave until the executive team gently suggested it. Their immediate, unanimous offer of support caught me off guard, shifting my perspective on what it means to truly belong to a church community.

Accepting their offer was not merely a practical decision; it was a spiritual one. In ministry, we are often expected to be the primary source of care and strength for others, yet we must also learn to receive care ourselves. By choosing to accept this compassionate leave, I allowed myself to remain vulnerable and acknowledged my own need for the church's support. When I shared this gesture of kindness with my supervisor, she was deeply moved, noting that this is exactly how a healthy, caring community should function—not by expecting the leader to carry the burden alone, but by walking alongside them in their time of need.

Sunmi and I are profoundly grateful for the parish's unwavering backing during this challenging time. It has been a tangible reminder of God's grace working through the people of this church. We also wish to extend a special thank you to Pam and John Petts, whose kindness—marked by a lovely card and a thoughtful fruit basket delivered to our home on behalf of the church during Sunmi's recovery—brought us immense comfort. Ministry is rarely a solo journey; thank you for showing me that it is, above all, a shared one.

Martin

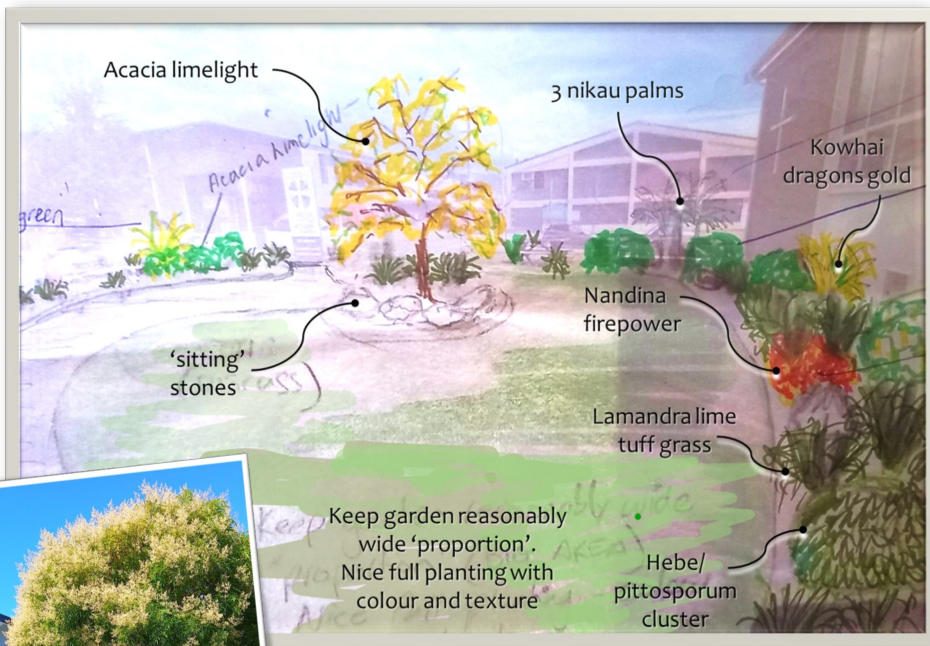
Rev. Martin Sungchel OH



NELSON TASMAN METHODIST PARISH

Christ Focused & Community Centred

Minister Rev Martin Oh 970 6990 martinandsun@gmail.com
Parish Stewards Wayne Chapman 547 2326 | Nadia Madill 547 8452
Newsletter Caroline Hoar caroline@studio32.nz



COMMUNITY GARDEN PROJECT

This image indicates the proposed layout, and to the left is a specimen tree for the centre of the garden. Maintenance free options have been considered. The garden project should commence in 2 months and will incorporate irrigation, two bench seats as well as sitting rocks.

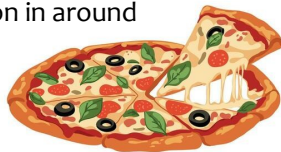


OUR OWN PIZZA QUEEN



One of the Fresh Choice staff's favourites treats at came from our own Heather...home-made pizzas.

Heather starts with Turkish Bread thick crust pizza bases, topped with spaghetti, diced onion, sliced ham, and crushed pineapple on top. Then, since this is a meal she loves to share with her mum, she arranges sliced tomato on one half, which is her mum's favourite. Then, the other half is covered with sliced mushrooms, Heather's personal preference. The whole pizza is then topped with a very generous sprinkle of grated Edam cheese and then cooked to perfection in around ten minutes in her oven so it's a very quick meal to make.



CUPPA & CONVERSATION!

Tuesday 11 May
2.30pm
 in the church lounge



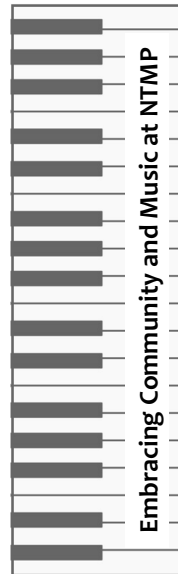
Know the Signs, Take Action, Save Lives

Ally Hossain, CEO of NZ Sepsis Trust.

Everyone is most welcome.



GETTING TO KNOW US DAVE & CHRISTINA HALLAM



We're delighted to have recently welcomed Dave and Christina to our church family. They've already brought warmth, positivity and beautiful music to our midst. Dave's adventures in New Zealand began at age 46, with permanent residency and a passion for music. With a Diploma in Jazz Arrangement and Composition, Dave soon found his place in the R.N. Navy band in Devonport, Auckland, completing a three-week orientation course that included some fun challenges with percussion and playing keyboards in the Navy Stage Band!

The couple's story together began at Waiake Methodist Church on the North Shore, where Dave served as the fulltime organist. Christina, originally from Hong Kong, had sung in her Methodist Church Choir back home but had moved away from singing before meeting Dave. She felt their meeting was part of God's plan, as she was hoping to share her life with another Christian. Twenty years later, their partnership continues to flourish.