

Pediatric Rehab

Betty Clark BSN, Med, RN, CRRN

Pedi Rehab -General Concepts

- Children are an integral part of the family system
- Play is important
- **Cannot separate the child from the family in terms of treatment plans**
- Children are children first, child with disability second
- Need to have a developmental focus when caring for them

Growth and Development

- Physical
 - develop in an orderly fashion
 - sequentially & predictably
- Cognitive
 - progressive
 - family → peers → community
- Social
 - stabilizes relationships with family first, then strangers
- Psychological
 - sense of awareness → self image → confidence

These can influence the response to injury

Developmental Theories

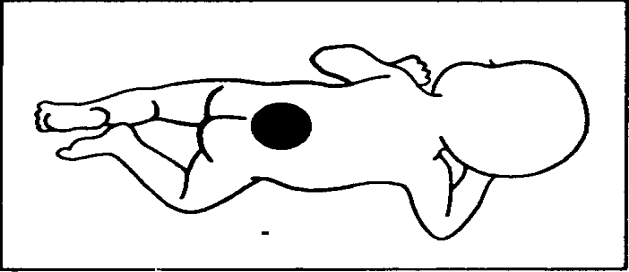
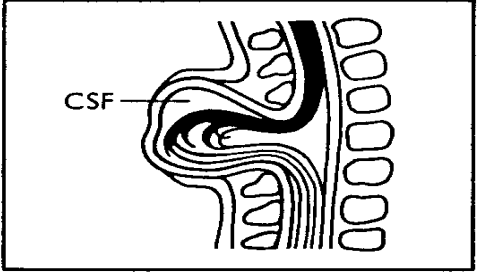
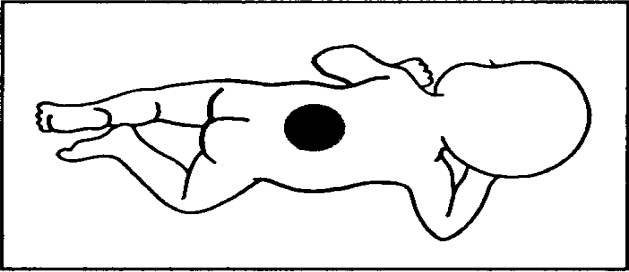
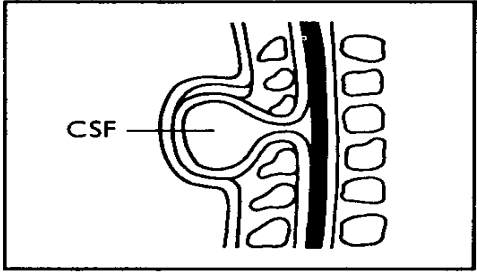
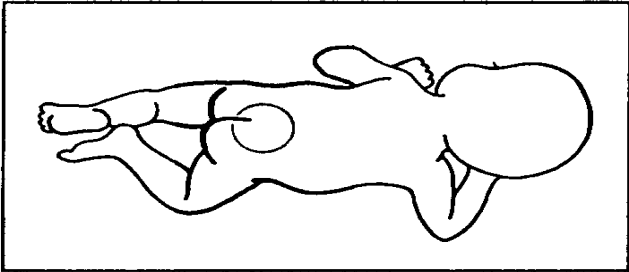
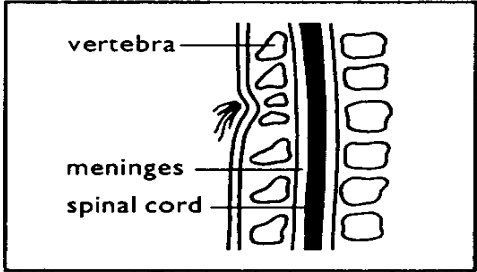
- Erickson

- Piaget

Pediatric Disabilities

- Trauma
- Congenital
- Head Injury
- SCI
- Burns
- HIV
- Spina Bifida
- Ortho/Neuro problems

Types of Spina Bifida



Community Services

Long term Planning

IDEA

No child Left Behind

Home Health

Health Promotion and Prevention

Transition to Adulthood Program

Vocational Rehab