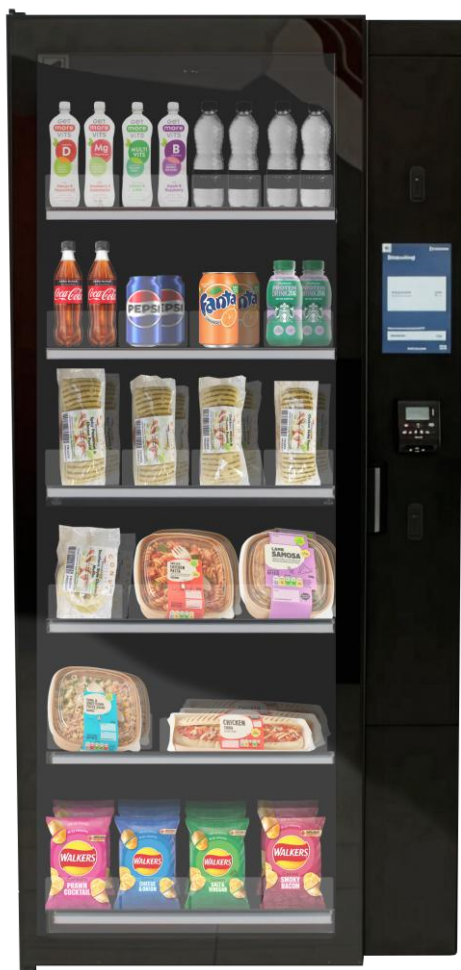


Smart Store 700



Enjoy hassle-free shopping with the latest innovation in vending technology, the Smart Store 700. Fuel your workforce twenty-four seven with access to a variety of products including fresh food and beverages across 6 shelves, 24 trays, 94 slots.

The trays can accurately detect the weight of items and built-in cameras detect the look and volume of products. The detection system can achieve 99.9% accuracy in detecting and charging for items, effectively minimising theft, and shrinkage.

Consumers unlock the Smart Store 700 by presenting their payment method to the point-of-sale payment mechanism. Once a consumer has chosen their product and remove the desired item it is automatically added to their cart, (and multiple items can be purchased), they complete the purchase by pressing 'Pay' before closing the door.

Features

- **Enhanced Theft Prevention:** Uses weighted shelves and built-in cameras to achieve 99.9% accuracy in detecting and charging for items, effectively minimising theft, and shrinkage.
- **Seamless Customer Experience:** Customers unlock the unit by presenting payment at the point-of-sale (POS), remove desired items which are automatically added to their cart, and complete the purchase by pressing 'Pay' before closing the door.
- **Flexible and Scalable:** Operators can start with one unit and scale up to four, all connected to a single POS terminal, accommodating various product assortments and locations.
- **Inclusive Accessibility:** Features audio assistance to ensure a user-friendly experience for visually impaired consumers.
- **Remote Telemetry:** Features remote telemetry for accurate sales data and replenishment assistance to ensure sustainable logistics and procurement.



Details

- Saleable units, single, dual, and triple using a single 10-inch menu.
- 6 shelves, 24 trays, 94 slots
- Temperature 0° - 4°
- Food safe automatic lock if temperature drops.
- Flexible shelving to suit many product sizes and type.
- Payment system allows you to pay by cashless cards, mobile or smart watch.
- Footprint Single Unit 1956mm (h) x 895mm (w) x 787mm (d)
- Footprint Dual Unit 1956mm (h) x 1600mm (w) x 787mm (d)
- Footprint Trio Unit 1956mm (h) x 2515mm (w) x 787mm (d)
- Weight 315Kg



Excellent After Sales Service



Full Technical Support



World Class Technology