

CEMHER[®]

GUIDE FOR METALLICS AND OXIDES

- **NATURAL METALLIC EFFECTS (Metalresin, Metalplus, Oximetal):**

Application by trowel directly on the substrate and subsequent polishing after complete drying (minimum consumption is 1 kg/m²).



BRONZE



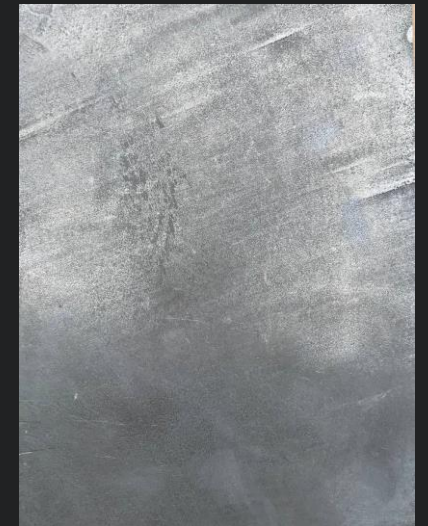
COPPER



OXIMETAL



GOLD



SILVER

Different finishes can be achieved by moderating the degree of polishing (to achieve the effect of a shiny metallic sheet it is necessary to apply the product with a minimum consumption of 2 kg/m²):



Lower polishing grade: subsequent polishing with roto-orbital sander starting with 120 grit, 400 and finishing with 800 grit.



Higher polishing grade: subsequent polishing with roto-orbital sander starting with 120 grit, 400 and finishing with 800 grit. For the final polishing with 800 grit high speed sander is required.

- **OXIDATION (Metalresin Copper/Bronze/Gold, Oximetal + Oxidher Activators):**

Application by trowel + oxidation (for a higher intensity of oxidation it is important to apply the activators on a dry surface: the drier the metallic coating is, the deeper the color of the oxidation will be. Drying takes about 4-6 hours depending on the thickness of the coating and the environmental conditions) + optional polishing after drying (in order to keep the intense oxide effect, we recommend not to polish the surface).

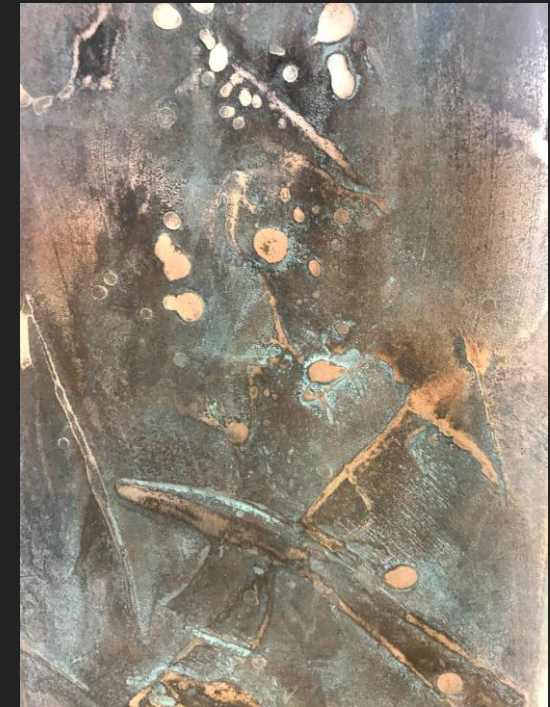
The recommended combinations are:



BRONZE + NORDIC BLUE ACTIVATOR
(WITH PARTIAL FINAL POLISHING)



COPPER + NORDIC BLUE ACTIVATOR
(WITH PARTIAL FINAL POLISHING)



GOLD + NORDIC BLUE ACTIVATOR
(WITH PARTIAL FINAL POLISHING)

NOTE: all three finishes (Bronze/Copper/Gold) can be also oxidized with NORDIC GREEN ACTIVATOR with greenish blue finishing.



OXIMETAL + RED ACTIVATOR

**OXIMETAL + RED ACTIVATOR +
NORDIC BLUE ACTIVATOR (APPLIED
ON FRESH RED ACTIVATOR)**



**OXIMETAL +
RED ACTIVATOR**

**OXIMETAL + RED ACTIVATOR +
NORDIC BLUE ACTIVATOR (APPLIED
ON DRY RED ACTIVATOR)**



**OXIMETAL + RED ACTIVATOR +
NORDIC BLUE ACTIVATOR (APPLIED
ON FRESH RED ACTIVATOR)**

**OXIMETAL + RED ACTIVATOR
OXIMETAL + NORDIC BLUE ACTIVATOR**



**AREAS WITH THE SAME MIX
BUT WITH LESS QUANTITY OF
RED ACTIVATOR**

**OXIMETAL + RED ACTIVATOR +
NORDIC BLUE ACTIVATOR (APPLIED
ON FRESH RED ACTIVATOR)**

**OXIMETAL + RED ACIVATOR
+ NORDIC BLUE ACTIVATOR
(APPLIED ON FRESH RED
ACTIVATOR)**



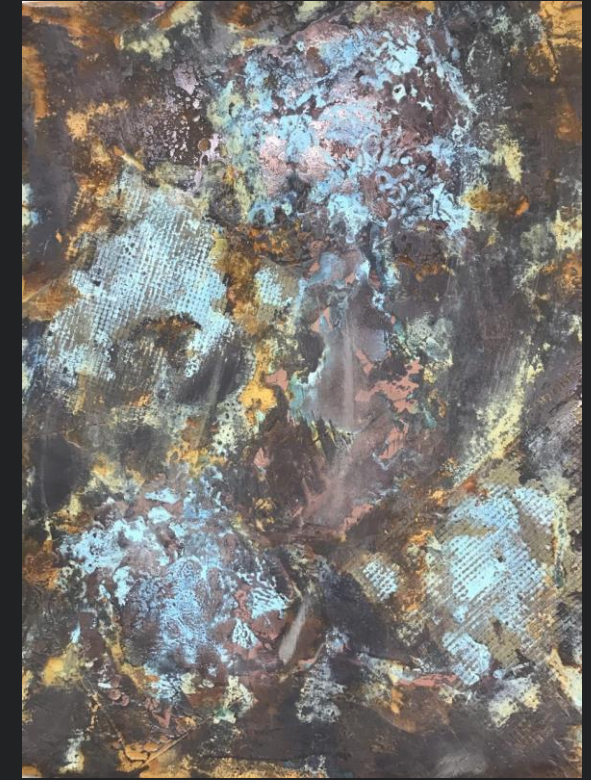
OXIMETAL + RED ACTIVATOR

OXIMETAL + NORDIC BLUE ACTIVATOR

**OXIMETAL + RED ACIVATOR
+ NORDIC BLUE ACTIVATOR
(APPLIED ON FRESH RED
ACTIVATOR)**



OXIMETAL + NORDIC BLUE ACTIVATOR



**OXIMETAL + SMALL AREAS OF METALRESIN
COPPER AND BRONZE + NORDIC BLUE
ACTIVATOR + RED ACIVATOR
(WITH PARTIAL FINAL POLISHING)**