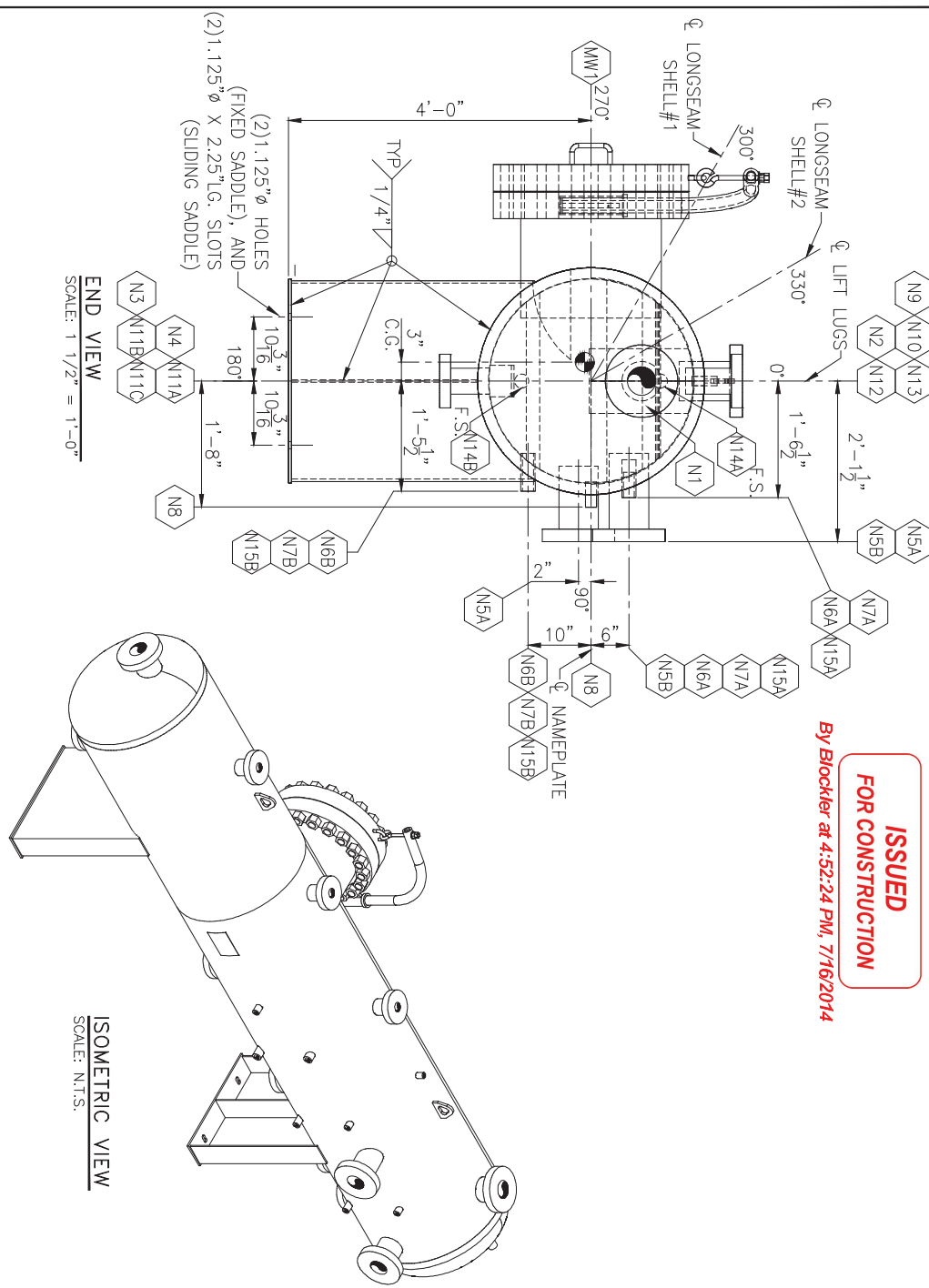


**ISSUED
FOR CONSTRUCTION**

By Blockler at 4:52:24 PM, 7/16/2014



ISOMETRIC VIEW
SCALE: N.T.S.

END VIEW
SCALE: 1 1/2" = 1'-0"

BILL OF MATERIAL

ITEM QTY	PART NO.	DESCRIPTION	MATERIAL
1	2	HEAD/ELPHORICAL 2:1.56" O.D. X 1.75" THK (1.620")	SA-516-70N
2	1	SHELLOUT/233 HEAD/ELPHORICAL 2:1.56" O.D. X 1.75" THK X 10'-0" LG.	SA-516-70N
3	1	SHELLOUT/233 SHELL PLATE ROLLED 3/8" O.D. X 1.75" THK X 10'-0" LG.	SA-516-70N
4	1	FLGRFR284 FLANGE 18" 300# RFL/IN. 20" LG.	SA-350-LF2 CL.1
5	1	FLGRFR204 FLANGE 14" 300# RFL/IN. 10" LG.	SA-105
6	2	FLGRFR118 FLANGE 4" 300# RFL/IN. 12" LG.	SA-105
7	8	FLGRFR6119 FLANGE 2" 300# RFL/IN. 12" LG.	SA-105
8	1	FLGRFR121 FLANGE 18" 300# RFL/IN. 2" LG.	SA-105
9	3	FTMFD141 COUPLING 3/4" 6000# NPT 4" LG.	SA-105
10	2	FTMFD142 COUPLING 3/4" 6000# NPT 6" LG.	SA-105
11	4	FTMFD149 COUPLING 1/2" 6000# NPT 6" LG.	SA-105
12	1	FTMFD135 COUPLING 1/2" 6000# NPT 4" LG.	SA-105
13	1	DELETED	
14	1	DELETED	
15	1	GASKET 18" 300# ASPHTE FILELESS	304 SS
16	20	STUDS1028 (1) STUD 1.75" X 1'-1" LG. INCL. ZINC COATED W/ (2) A-184-2H HVY HEX NUTS	SA-193-87
17	1	NAMEP0002 CODE NAMEPLATE	SA-105
18	1	MESH MTR PASTENESS STEEL 6" THK 24" G/S X 2'-8 3/4" O.D. W/CARBON STEEL GRID (SEE DETAIL)	JOSSS
19	1	PREC0052 PREC2 1/2" S/400(SD) SMLS	SA-105-B
20	1	PREC0051 PREC2 2XSS1.058 W/ SMLS 3"-9 5/4" LG.	SA-105-B
21	1	DELETED	
22	1	PLPT0163 SOLIDS WEAR PLATE	SA-36
23	1	PLPT0916 MANWAY PLATE SUPPORT 1	SA-36
24	1	PLPT0916 MANWAY PLATE SUPPORT 2	SA-36
25	1	PLPT0916 MANWAY PLATE SUPPORT 4	SA-36
26	1	PLPT0917 MANWAY PLATE SUPPORT 5	SA-36
27	2	PLPT0909 SADDLE PLATE (BENT)	SA-36
28	1	PLPT0910 BASEPLATE (SLIDING)	SA-36
29	1	PLPT0911 BASEPLATE (FIXED)	SA-36
30	2	PLPT0912 WARE BREAKER	SA-36
31	1	PLPT1297 WER PLATE	SA-36
32	1	PLPT0914 INLET DRYER PLATE	SA-36
33	1	PLPT0915 INLET DRYER PLATE	SA-36
34	2	LF165003 LFT LUG PROCK/MERIDIAN SERIES 2-899-MIL/20,000 LBS MAX LOAD	SA-105
35	2	STLRB014 FLAT BAR 3/8" THK X 6"	SA-36
36	2	STLRND016 ANGLE 4" X 4.5/8" THK	SA-36
37	1	STLRND015 ROUND BAR 3/4" X 8 3/4" LG.	SA-36
38	1	STLRND015 ROUND BAR 3/4" X 1'-0" LG.	SA-36
39	1	EXTR0008 EYE BOLT 1/4" X 10" LG. (2) NUTS AND (2) WASHERS	SA-307
40	1	SUPR0065 GEORGE FITTING 1/4" NPT (INSTALL AFTER PAINTING)	SA-105
41	1	FLGRFR204 FLANGE 4" 300# RFL/IN. 14" LG.	SA-105

WELD PROCEDURES

WPS NO.	DESCRIPTION	DATE	BY	CHKD
WPS KWI-01				
WPS KWI-02				

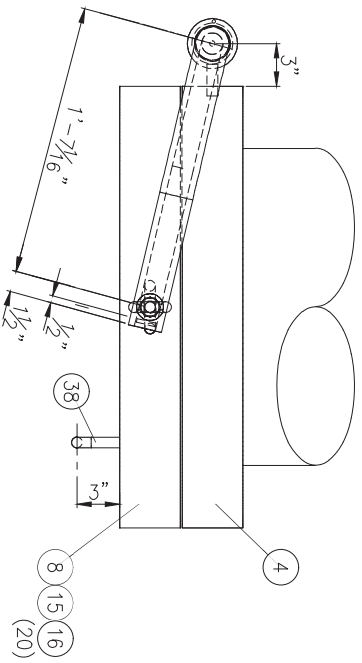
BOLD PRODUCTION SERVICES

36" OD X 15'-0" S/S @ 2000#
HORIZ. 4-PHASE PRODUCTION SEPARATOR
WOODY-ELITE GEN II

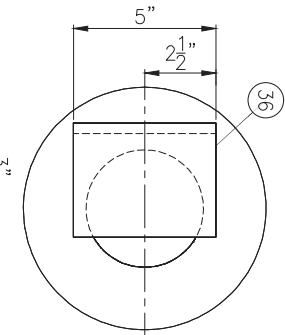
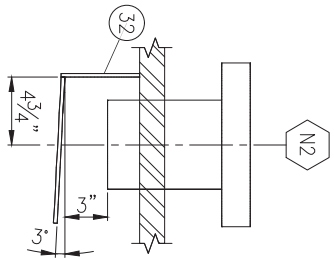
K INTERNATIONAL
Solutions for Energy

12345 Industrial Blvd., Suite 100
Houston, TX 77058
Tel: 281-456-7890
Fax: 281-456-7891
www.kinternational.com

REV	DESCRIPTION	DATE	BY	CHKD
0	ISSUED FOR CONSTRUCTION			



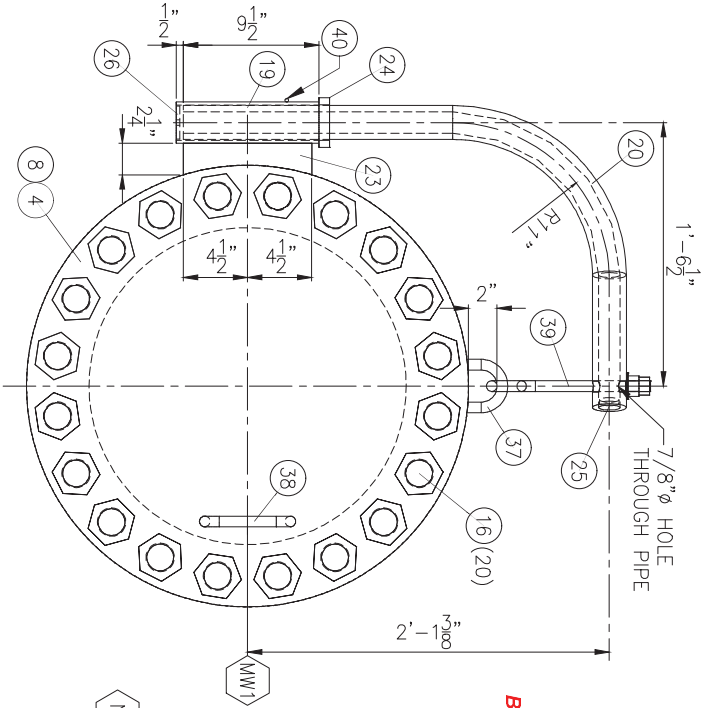
OUTLET DIVERTER DETAIL
SCALE: 3" = 1'-0"



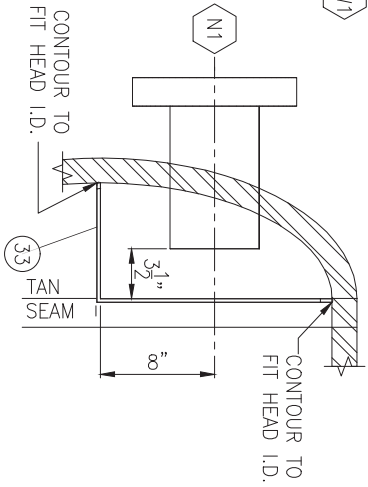
CONTOUR TO FIT VESSEL I.D.

ISSUED FOR CONSTRUCTION

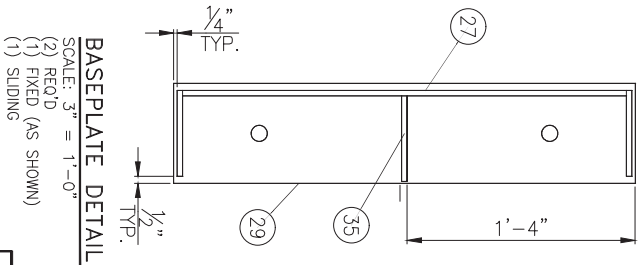
By Blockler at 4:52:26 PM, 7/16/2014



MANWAY DETAIL
SCALE: 3" = 1'-0"



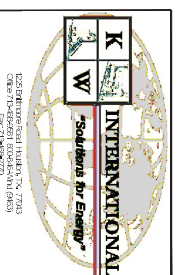
INLET DIVERTER DETAIL
SCALE: 3" = 1'-0"



BASEPLATE DETAIL
SCALE: 3" = 1'-0"
(2) RECD
(1) FIXED (AS SHOWN)
(1) SLIDING

VORTEX BREAKER DETAIL
SCALE: 6" = 1'-0"
(2) RECD - N3 & N4

NO.	DATE	DESCRIPTION	BY	CHK
1	07/04/14	ISSUED FOR CONSTRUCTION		
2				
3				
4				
5				
6				
7				
8				
9				
10				



TITLE: 36" OD X 15'-0" S/S @ 2000#
 HORIZ: 4-PHASE PRODUCTION SEPARATOR
 WOODY-ELITE GEN II
 SCALE: AS SHOWN
 SHEETS: 4
 SHEET NO: 3 OF 3
 DATE: SEPTEMBER 2010