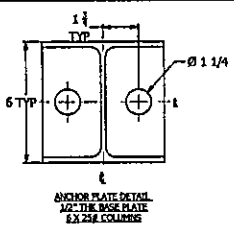


SEE 31015 STRUCTURAL ANALYSIS FOR COLUMN LOADING

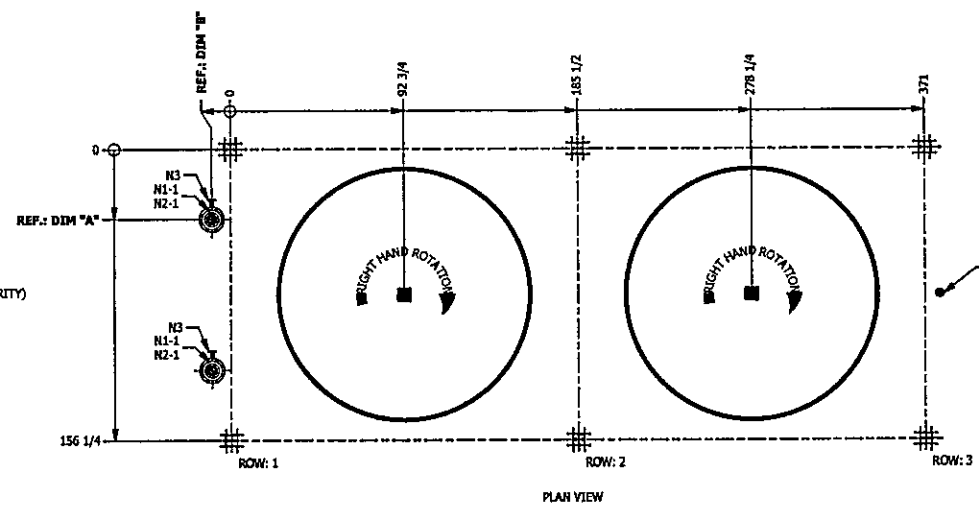
WEIGHT OPERATING: 43300/43500 WIND SP: 6 mph SNOW LOAD: 0 lb/ft² PLATE: 1000W/4 R CLUE
 DRY WEIGHT: 38900 WIND LOAD: 0 psf S/F: 2000 S/F: 0

COIL #	SERVICE	CODE	PRESSURES (psig) (inHg)			TEMPERATURES (°F) (°C)				TOP OF COIL	
			DESIGN	OPERATING	TEST	DESIGN	INLET	OUTLET	EVAPORATOR		CONDENSER
1	SPLITTER OVERHEAD CONDENSER		75	75	98	250	199	130	102	136	LOWER W/ HAILGUARD



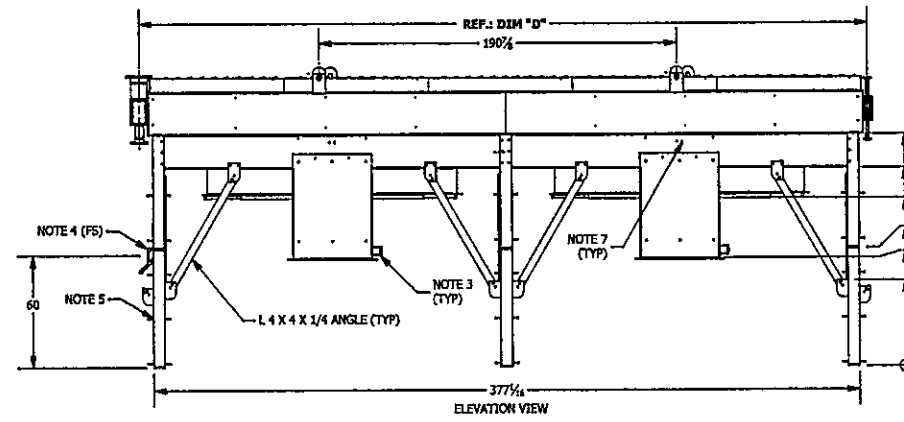
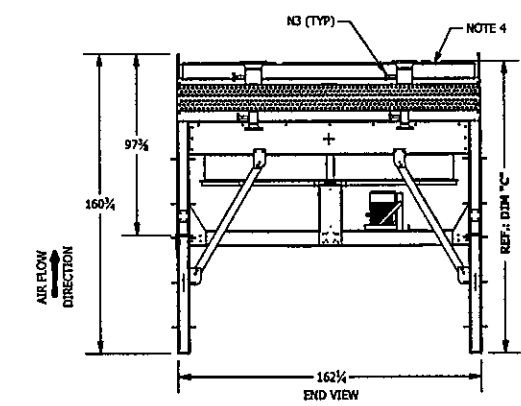
- GENERAL NOTES:
1. COOLER IS OF BOLTED CONSTRUCTION.
 2. FINISH: GALVANIZED.
 3. VIBRATION SWITCH: MURPHY YS2-EX
 4. SERIES 700 AUTO LOUVER W/ MANUAL LEVER, & INTEGRAL HAILGUARD
 5. NELSON FIRE PROOFING CLIPS REQUIRED (NOT SHOWN ON ALL COLUMNS FOR CLARITY)
 6. SEE SHEET 3 FOR WALKWAY AND LADDER MULTIBAY LAYOUT.
 7. MOTOR REMOVAL BEAMS REQUIRED.

COIL ORDER (LEFT TO RIGHT) W/ COIL VOLUMES.
 SPLITTER OVERHEAD CONDENSER (COIL 1) = 519 GAL



MOTDR TAGS	
JOB	TAG
31015A	010-EAM-141E-A/B
31015B	010-EAM-141F-A/B
31015C	010-EAM-141G-A/B
31015D	010-EAM-141H-A/B

DRIVE	
FAN SHEAVE	QD6/3V33.50
MOTOR SHEAVE	QD6/3V35.30
BELTS	6/32X1250
CENTER DIST	28.46
MOTOR	
HP	25
RPM	1750
FRAME	284T
ENCLOSURE	TEFC Ins F TR B
VOLTS	460
FREQUENCY	60
PHASES	3
FAN	
MAKE	MOORE
DIA. (in)	11
MODEL	10000-42 SC VT
BLADE QTY	7
PITCH	17.7
ACFM/FAN	122487
RPM	275
HP	19.82
BEARING	
FAN	2.1875 SCM 4 BOLT FLANGE
IDLER	-



FINAL CERTIFIED
 RELEASED FOR FABRICATION

SCHEDULE OF OPENINGS/REFERENCE DIMENSION TABLE						
TAG	SERVICE	DIM A	DIM B	DIM C	DIM D	DESCRIPTION
N1-1	COIL 1 INLET 1	37-9/16 in	10-3/16 in	156-1/2 in	389-1/16 in	8"-150# RF-WN 0.5" WT(Sch. 80)(WGL X-Sq.) SA-105
N1-1	COIL 1 INLET 2	118-11/16 in	10-3/16 in	156-1/2 in	389-1/16 in	8"-150# RF-WN 0.5" WT(Sch. 80)(WGL X-Sq.) SA-105
N2-1	COIL 1 OUTLET 1	118-11/16 in	10-3/16 in	120 in	389-1/16 in	4"-150# RF-WN 0.531" WT(Sch. 160) SA-105
N2-1	COIL 1 OUTLET 2	37-9/16 in	10-3/16 in	120 in	389-1/16 in	4"-150# RF-WN 0.531" WT(Sch. 160) SA-105
N3	TEMP PRESS	--	--	--	--	1"-150# RF-WN 0.358" WT(OX-Sq.) SA-105 W/ BLIND FLNG
N4	VENT/ DRAIN	--	--	--	--	1"-150# RF-WN 0.358" WT(OX-Sq.) SA-105 W/ BLIND FLNG

REV	DESCRIPTION	DATE	APPROVED
3	ADDED MOTOR TAG TABLE	2/22/2016	DHC
2	CHANGED TO STEP THRU LADDERS	1/21/2016	DHC
1	FINAL CERTIFIED	1/6/2016	DHC
0	APPROVAL DRAWING	10/13/2015	DHC

MODELED BY: DHC

UNLESS OTHERWISE SPECIFIED

1. REMOVE ALL BURRS AND SHARP CORNERS.

2. COR. RAD .03

3. DO NOT SCALE DRAWING.

4. ALL DIMENSIONS ARE IN INCHES.

5. ALL DIMENSIONS ARE IN MM

6. MACHINE FIN.

7. FABRICATION .X = ± 0.25 .XX = ± 0.125 .XXX = ± 0.06 FRACTION = ± 1/8 ANGLES ± 3° 8. MACHINE .X = ± 0.030 .XX = ± 0.015 .XXX = ± 0.005 ANGLES ± 1/2° FRACTION = ± 1/64

CHART COOLER SERVICE CO., INC.
 3515 DAWSON RD.
 TULSA, OK 74115
 (918)621-5200

TITLE: JOB: 31015 H-MODEL BAY ARRANGEMENT

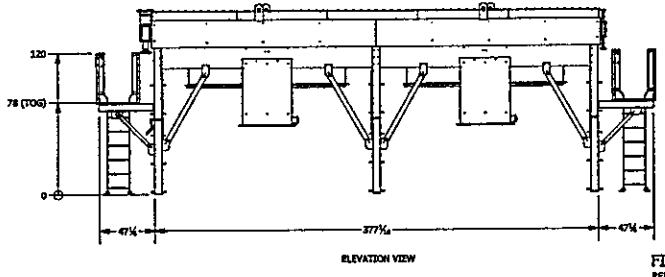
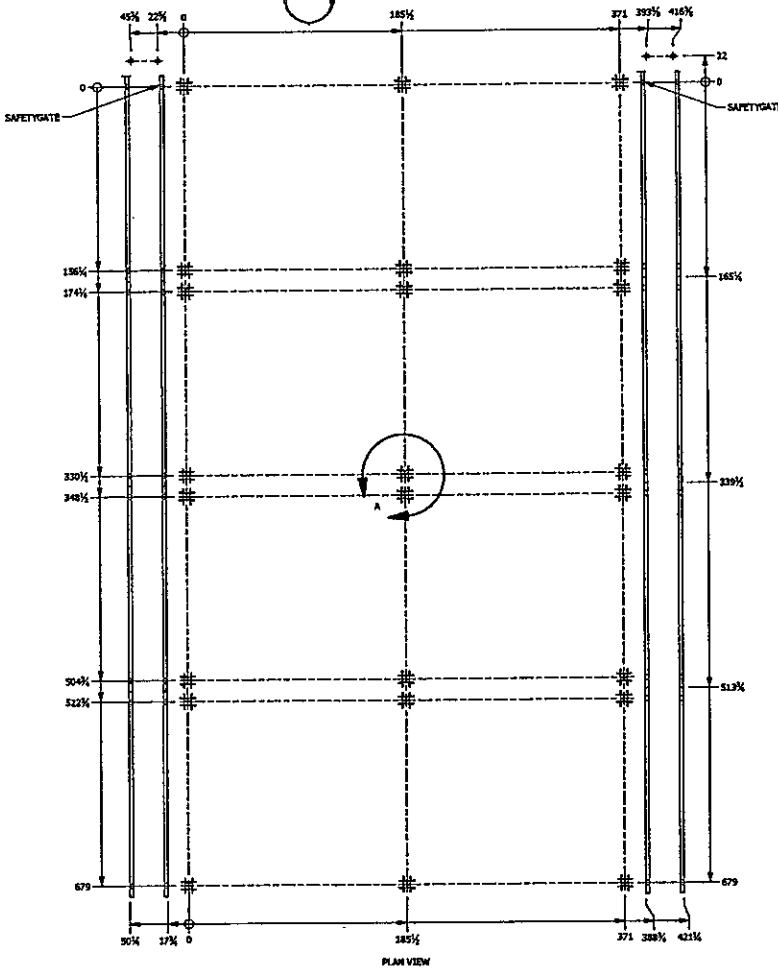
CLIENT: KP ENGINEERING

SERVICE: NEW SPLITTER OVERHEAD CONDENSER - WEST BAY | TAG NLI 010-EA-141 E/RYE

PO#: J1422-B-006 | PROJECT: 010-EA-141 E

DATE: 10/13/2015 | JOB No.: 31015 | MODEL: 4-HF132-2-32

REV. 3 | DRAW NO.: 31015-O-2 | UNITS: 4



FINAL CERTIFIED
RELEASED FOR FABRICATION

REV	DESCRIPTION	DATE	APPROVED
0	APPROVAL DRAWING	10/13/2015	DHC
1	FINAL CERTIFIED	1/6/2016	DHC
2	CHANGED TO STEP THRU LADDERS	1/13/2016	DHC
3	ADDED MOTOR TAG TABLE	2/22/2016	DHC

MODELED BY: DHC DETAILED BY: DHC CHECKED BY: ADM APPROVED BY: EJY	UNLESS OTHERWISE SPECIFIED 1. REMOVE ALL BURRS AND SHARP CORNERS 2. COR. RAD .03 3. DO NOT SCALE DRAWING 4. ALL DIMENSIONS ARE IN INCHES. 5. ALL DIMENSIONS ARE IN MM 6. MACHINE FIN.	7. FABRICATION $X = \pm 0.25$ $XX = \pm 0.125$ $XXX = \pm 0.06$ FRACTION = $\pm 1/8$ ANGLES = 3° 8. MACHINE $X = \pm 0.030$ $XX = \pm 0.015$ $XXX = \pm 0.008$ ANGLES = $1/2^\circ$ FRACTION = $\pm 1/64$
--	---	---

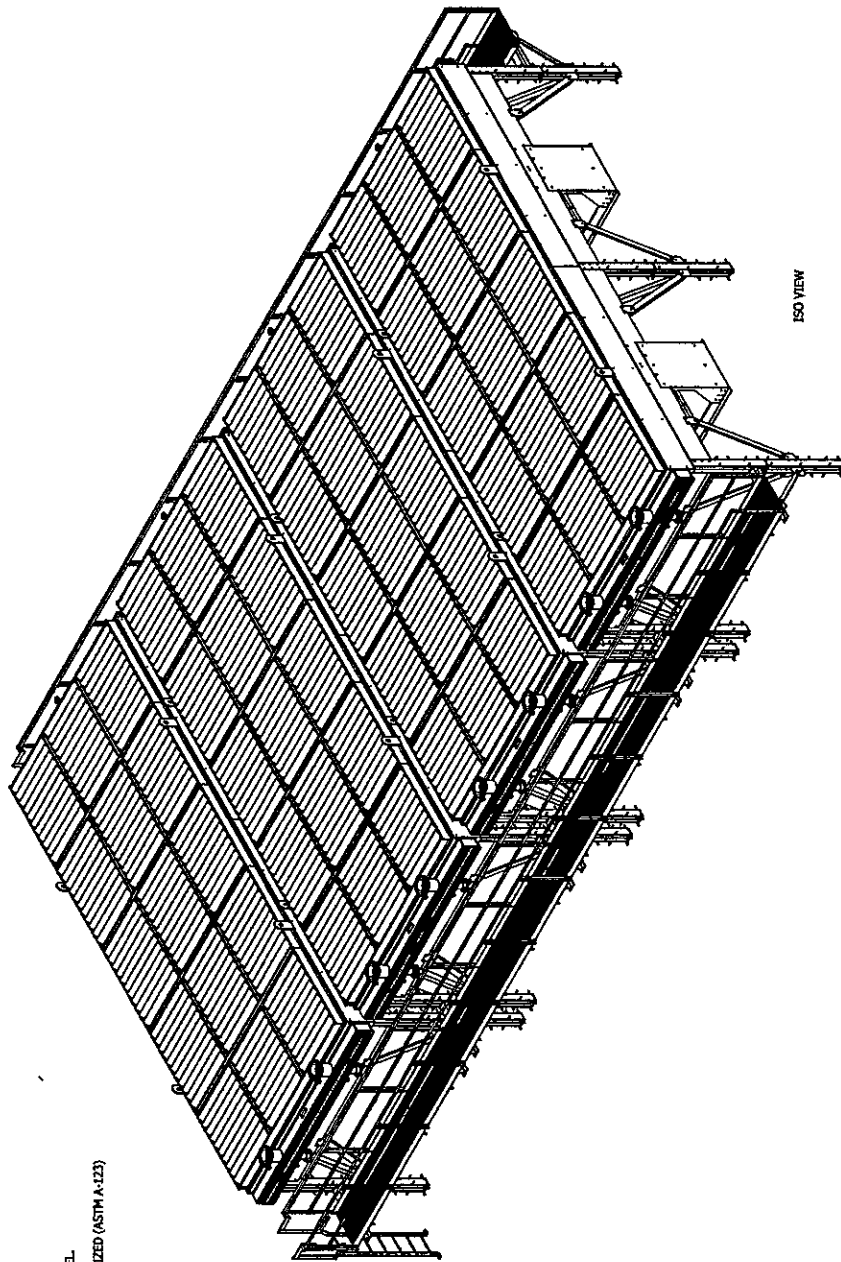
CHART COOLER SERVICE CO, INC. 2518 DAWSON RD. TULSA, OK 74115 (918)621-8200	
TITLE:	MULTIBAY LAYOUT
CLIENT:	KP ENGINEERING
<small>SERVICE: AIR SPLITTER OVERHEAD CONDENSER - WEST BAY TAG NO.: 000-00-043 BAY/IN</small> PO#: 21421-0-006 PROJECT: 010-EA-241 E DATE: 10/13/2015 JOB NO.: 31015 MODEL: 4-HP132-2-22 REV. 2 DRAW NO.: 31015-0-2 UNITS: 4	

WALKWAY NOTES:

1. PLATFORMS SHALL BE FABRICATED IN SECTIONS IF NECESSARY FOR SHIPPING AND FIELD ERECTION.
2. PLATFORMS FABRICATED IN SECTIONS SHALL BE SHOP FITTED, MARKED AND KNOCKED DOWN FOR SHIPPING.
3. HANDRAILS SHALL BE FABRICATED IN SECTIONS IF NECESSARY FOR SHIPPING AND FIELD ERECTION.
4. ALL BURRS AND SHARP EDGES SHALL BE REMOVED.
5. SELF CLOSING SAFETY GATE AT LADDER OPENINGS.

LADDER NOTES: PER ANSI A14.3-1974

1. CARE IS NOT REQUIRED WHERE THE LENGTH OF CLIMB IS 20 FEET OR LESS ABOVE GROUND LEVEL.
2. ALL MATERIAL: STEEL CONFORMING TO ASTM A-36
3. PROTECTIVE COATING: LADDER, GAGE PLATFORM, GRATING, HANDRAILS TO BE HOTDIP GALVANIZED (ASTM A-123) OR ONE SHOP COAT PRIMER AND ONE FIELD COAT OF PAINT.
4. ALL BURRS AND SHARP EDGES SHALL BE REMOVED.



FINAL CERTIFIED
RELEASED FOR FABRICATION

CHART COOLER SERVICE CO., INC.

3515 DAWSON RD.
TULSA, OK 74115
(918)621-5200

TITLE: COVER PAGE

CLIENT: KP ENGINEERING

SERVICE: BELT FILTER OVERHEAD CONCRETE - WEST BANK | TAG NO.: 410-26-10-17-20M

PO#: 14422-9-006 | PROJECT: 010-2A-441 E

DATE: 10/13/2015 | JOB NO.: 31015

REV. 3 | DRAW NO.: 31015-O-1 | UNITS: 4

UNLESS OTHERWISE SPECIFIED
1. REMOVE ALL BURRS AND SHARP CORNERS
2. COR. RAD. .03
3. DO NOT SCALE
4. ALL DIMENSIONS ARE IN INCHES.
5. ALL DIMENSIONS ARE IN MM
6. MACHINE FIN.
7. FABRICATION
.X = ± 0.25
.XX = ± 0.125
.XXX = ± 0.06
FRACTION ± 1/8
ANGLES ± .3°
6. MACHINE
.X = ± 0.030
.XX = ± 0.015
.XXX = ± 0.005
ANGLES ± 1/2°
FRACTION ± 1/64

MODELED BY:	Detailed By:	Checked By:	Approved By:
DHC	DHC	ADM	BY

REV	DESCRIPTION	DATE	APPROVED
3	ADDED MOTOR TAG TABLE	2/22/2016	DHC
2	CHANGED TO STEP THRU LADDERS	1/21/2016	DHC
1	FINAL CERTIFIED	1/6/2016	DHC
0	APPROVAL DRAWING	10/13/2015	DHC

REVISION HISTORY