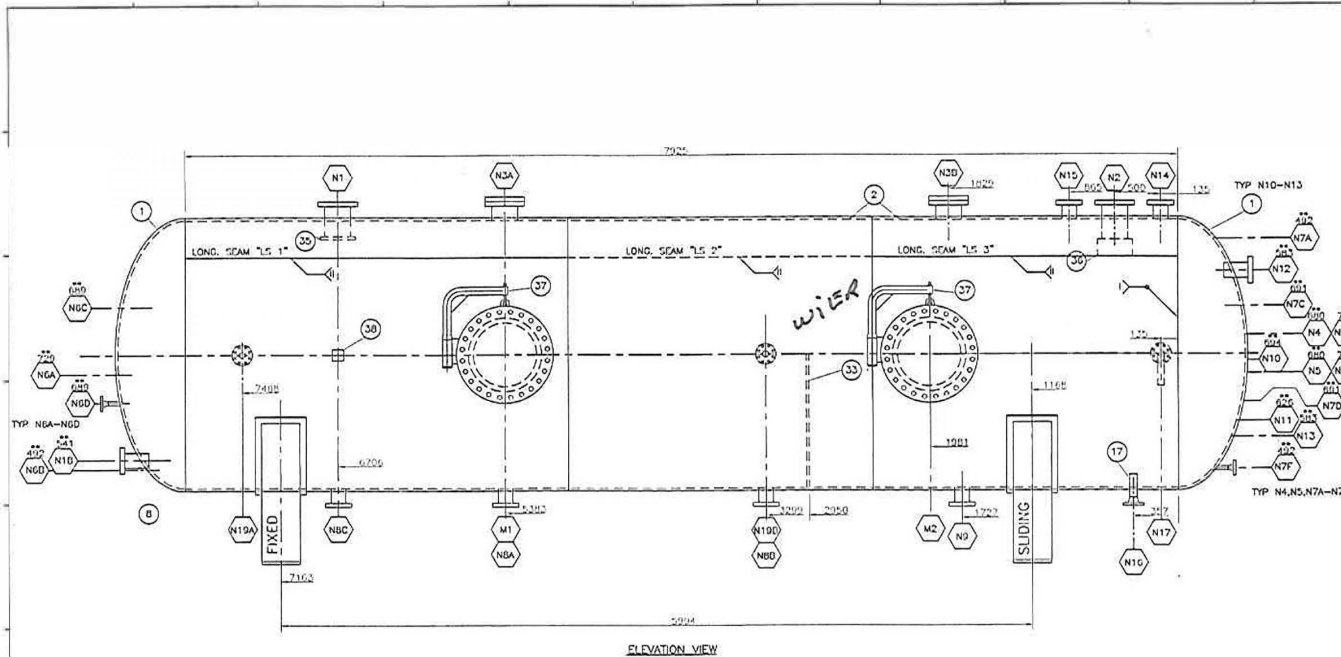


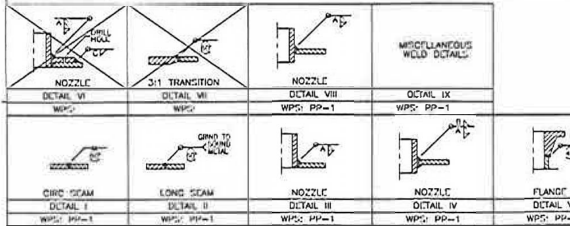
T-67 T-68



ELEVATION VIEW

- NOTES
1. ALL BOLTS TO STRADDLE NATURAL VESSEL CENTERLINE.
  2. IMPACT TCT REQUIRED ON HEAD TO SHELL TO SHELL SHELL LONG. SEAM
  3. PROJECTION MEASUREMENT FROM TO 0.00mm UNLESS OTHERWISE SPECIFIED.
  4. ALL INTERNAL SHARP EDGES TO BE ROUNDED OFF.
  5. ALL MATERIALS EXCEPT HEADS AND SHELLS EXEMPT FROM IMPACT TESTING AS PER UG-66(f).

\* SPECIFIED MIN. REQUIRED DIMENSION ACCORDING TO THE CODE, EXCESS OF SPECIFIED DIMENSION IS ACCEPTABLE



NOZZLE SCHEDULE														
NOZZLE	SIZE	TYPE	SCH	RATING	SERVICE	PROJECTION		RE-PAD	WELD	FILLET WELD SIZE				BOM ITEM
						OUTSIDE	INSIDE			OD x THK	DETAIL	A	B	
N1	6"	RFLWN	26.50WT	300#	INLET	127	26"	-	NV	22	0"	0"	0"	10.35
N2	6"	RFLWN	26.50WT	300#	DCG OUTLET	127	26"	-	NV	22	0"	0"	0"	10.36
N3A	6"	RFLWN	26.50WT	300#	INSPECTION	127	26"	-	NV	22	0"	0"	0"	10.24,25
M4	1"	RFLWN	XXH	300#	PI	127	0"	-	NV	22	0"	0"	0"	6.15
N5	1"	RFLWN	XXH	300#	TI	127	0"	-	NV	22	0"	0"	0"	6.15
NG4D	1"	RFLWN	XXH	300#	SOLIDS LC	127	0"	-	NV	22	0"	0"	0"	6.15
N7A7	1"	RFLWN	XXH	300#	LIQUIDS LC	127	0"	-	NV	22	0"	0"	0"	6.15
NS4C	3"	RFLWN	20.57WT	300#	SOLIDS DRAIN	127	FLUSH	-	NV	22	0"	0"	0"	9
N8	3"	RFLWN	20.57WT	300#	LIQUIDS DRAIN	127	FLUSH	-	NV	22	0"	0"	0"	9
N10	3"	RFLWN	20.57WT	300#	HC LC	127	0"	-	NV	22	0"	0"	0"	9
N11	3"	RFLWN	20.57WT	300#	WATER LC	127	0"	-	NV	22	0"	0"	0"	9
N12	3"	RFLWN	20.57WT	300#	HUSD	127	0"	-	NV	22	0"	0"	0"	9
N13	3"	RFLWN	20.57WT	300#	LUSD	127	0"	-	NV	22	0"	0"	0"	9
N14	3"	RFLWN	20.57WT	300#	PDV	127	0"	-	NV	22	0"	0"	0"	9
N15	3"	RFLWN	20.57WT	300#	SPARE	127	0"	-	NV	22	0"	0"	0"	9
N16	2"	RFLWN	XXH	300#	WATER OUT	127	0"	-	NV	22	0"	0"	0"	7.16,17
N17	2"	RFLWN	XXH	300#	HC OUT	127	0"	-	NV	22	0"	0"	0"	7.16,18,22
N18	3"	RFLWN	20.57WT	300#	COL	127	26"	-	NV	22	0"	0"	0"	14
N19A	2"	RFLWN	XXH	300#	SPARE	127	0"	-	NV	22	0"	0"	0"	5,7,8,19,20,23
N20	1"	RFLWN	XXH	300#	SPARE	127	0"	-	NV	22	0"	0"	0"	6.15
M1,M2	20"	RFLWN HD	32.69 WT	300#	MANWAY c/w DAWT	127	40"	-	NV	22	0"	0"	0"	12,13,26,27,37

BILL OF MATERIALS			
ITEM	QTY	DESCRIPTION	MATERIAL
1	2	2:1 SE HEAD: 84" I.D. x 1" THK, 0.875" MAF, 50mm SF, CHARTER IMPACT TESTED PER UG-84 TO -50F, COUPON	SA-516-70N
2	2	PLATE (SHELL) :84" I.D. x 7/8" NOM. THK. x 8'-0" LONG CHARTER IMPACT TESTED PER UG-84 TO -50F, COUPON	SA-516-70N
3	1	PLATE (SHELL) :84" I.D. x 7/8" NOM. THK. x 10'-0" LONG CHARTER IMPACT TESTED PER UG-84 TO -50F, COUPON	SA-516-70N
4	2	FLANGE: 2" 150# RFLWN C/W SCH 80 BORE (N19A)	SA-350-LF2 CII
5	13	FLANGE: 1" 300# RFLWN C/W SCH XXH BORE (N4,N5,NG4D,N7A7,N20)	SA-350-LF2 CII
6	4	FLANGE: 2" 300# RFLWN C/W SCH XXH BORE (N16,N17,N19A)	SA-350-LF2 CII
7	20	FLANGE: 2" 150# ANGI RFSO COL(N19A)	SA-350-LF2 CII
8	11	FLANGE: 3" 300# ANGI RFLWN x 229mm LONG (N3A)	SA-350-LF2 CII
10	4	FLANGE: 6" 300# ANGI RFLWN 305mm LONG (N1,N2,N3A)	SA-350-LF2 CII
11	2	BLIND FLANGE: 6" 300# ANGI RF (N3A)	SA-350-LF2 CII
12	2	FLANGE: 20" 300# ANGI RFLWN HD x 356mm LONG (M1,M2)	SA-350-LF2 CII
13	2	BLIND FLANGE: 20" 300# ANGI RF (M1,M2)	SA-350-LF2 CII
14	1	FLANGE: 3" 300# ANGI RFLWN x 229mm LONG (N10)	SA-350-LF2 CII
15	13	PIPE: 1" SCH. XXH SMLS x CUT TO SUIT (N4,N5,NG4D,N7A7,N20)	SA-333-GR 6
16	3	PIPE: 2" SCH. XXH SMLS x250mm LONG (N17,N19A)	SA-333-GR 6
17	1	PIPE: 2" SCH. XXH SMLS x 280mm LONG (N16)	SA-333-GR 6
18	1	PIPE: 2" SCH. BD SMLS x 100mm LONG (N17)	SA-333-GR 6
19	2	PIPE: 2" SCH. BD SMLS x 250mm LONG (N19A)	SA-333-GR 6
20			
21			
22	3	ELBOW 2" SCH 80 LR 90° WELD (N17,N19A)	SA-420-WP6L
23			
24	2	GASKET- 0" 300# ANGI SPIRAL WOUND x 1/8" THK (N3A)	SA-516-70N
25	24	STUDS : 3/4" DIAMETER x 5" LONG (N3A)	SA-193-07M
26	2	GASKET- 20" 300# ANGI SPIRAL WOUND x 1/8" THK (M1,M2)	SA-516-70N
27	40	STUDS : 1 1/4" DIAMETER x 8 1/4" LONG (M1,M2)	SA-193-07M
28			
29	2	BASE PLATE: 254 mm WIDE x 1929mm LONG x 1/2" THK	SA-26
30	2	SADDLE: 1095mm WIDE x1929mm LONG x 1/2" THK. (IN FORM CHANNEL- 254mm FLANGE x 1929mm WED x 1095mm LONG)	SA-26
31	4	SADDLE RIB PLATE: 245mm WIDE x 695 mm LONG x 1/2" THK	SA-26
33	2	WDR PLATE: 83 7/8" OD x 42" HIGH x 3/8" THK	SA-26
34			
35	1	FLANGE: 6" 150# ANGI RFSO (N1)	SA-350-LF2 CII
36	1	STANDARD MGT PAD ASSEMBLY (N2)	
37	2	STANDARD MANWAY DAWT (M1,M2)	
38	1	STANDARD NAME PLATE AND BRACKET	

NOZZLE	SIZE	TYPE	SCH	RATING	SERVICE	OUTSIDE	INSIDE	OD x THK	DETAIL	A	B	C	D	BOM ITEM
N1	6"	RFLWN	26.50WT	300#	INLET	127	26"	-	NV	22	0"	0"	0"	10.35
N2	6"	RFLWN	26.50WT	300#	DCG OUTLET	127	26"	-	NV	22	0"	0"	0"	10.36
N3A	6"	RFLWN	26.50WT	300#	INSPECTION	127	26"	-	NV	22	0"	0"	0"	10.24,25
M4	1"	RFLWN	XXH	300#	PI	127	0"	-	NV	22	0"	0"	0"	6.15
N5	1"	RFLWN	XXH	300#	TI	127	0"	-	NV	22	0"	0"	0"	6.15
NG4D	1"	RFLWN	XXH	300#	SOLIDS LC	127	0"	-	NV	22	0"	0"	0"	6.15
N7A7	1"	RFLWN	XXH	300#	LIQUIDS LC	127	0"	-	NV	22	0"	0"	0"	6.15
NS4C	3"	RFLWN	20.57WT	300#	SOLIDS DRAIN	127	FLUSH	-	NV	22	0"	0"	0"	9
N8	3"	RFLWN	20.57WT	300#	LIQUIDS DRAIN	127	FLUSH	-	NV	22	0"	0"	0"	9
N10	3"	RFLWN	20.57WT	300#	HC LC	127	0"	-	NV	22	0"	0"	0"	9
N11	3"	RFLWN	20.57WT	300#	WATER LC	127	0"	-	NV	22	0"	0"	0"	9
N12	3"	RFLWN	20.57WT	300#	HUSD	127	0"	-	NV	22	0"	0"	0"	9
N13	3"	RFLWN	20.57WT	300#	LUSD	127	0"	-	NV	22	0"	0"	0"	9
N14	3"	RFLWN	20.57WT	300#	PDV	127	0"	-	NV	22	0"	0"	0"	9
N15	3"	RFLWN	20.57WT	300#	SPARE	127	0"	-	NV	22	0"	0"	0"	9
N16	2"	RFLWN	XXH	300#	WATER OUT	127	0"	-	NV	22	0"	0"	0"	7.16,17
N17	2"	RFLWN	XXH	300#	HC OUT	127	0"	-	NV	22	0"	0"	0"	7.16,18,22
N18	3"	RFLWN	20.57WT	300#	COL	127	26"	-	NV	22	0"	0"	0"	14
N19A	2"	RFLWN	XXH	300#	SPARE	127	0"	-	NV	22	0"	0"	0"	5,7,8,19,20,23
N20	1"	RFLWN	XXH	300#	SPARE	127	0"	-	NV	22	0"	0"	0"	6.15
M1,M2	20"	RFLWN HD	32.69 WT	300#	MANWAY c/w DAWT	127	40"	-	NV	22	0"	0"	0"	12,13,26,27,37

DESIGN DATA

DESIGN CODE: ASME CODE SEC. VIII DIV 1 2001 EDITION, 2003 ADDENDA

DESIGN PRESSURE: 350 PSI @ 250°F

MINIMUM DESIGN METAL TEMPERATURE: -50°F @ 350 PSI

WARP: 350 PSI @ -50/250°F

VESSEL HYDROTEST: 455 PSI

VESSEL VOLUME: 1990.413 (38.00 m<sup>3</sup>)

VESSEL WEIGHT: 29583lbs

CORROSION ALLOWANCE: 1/8" (3.2mm)

HEAD THICKNESS: 1" NOM

SHELL THICKNESS: 7/8" NOM

NOZZLE JOINT EFFICIENCY: 1.0

NDI: RT-1 FULL UW-11e

PWHT: YES, 1 Hr. @ 1150°F +/- 50°F

CRN: T7788.2

SURFACE PREP (EXT): NONE

SURFACE PREP (INT): NONE

INSULATION: NONE

UNITS REQUIRED: ONE (1)

REFERENCE DRAWINGS				REVISIONS				APPROVED				
NUMBER	TITLE	NO.	BY	DATE	ISSUE	CHK'D	APP'D	DISCIPLINE	INITIALS	DATE		
PROPPFC-42-01A-02	END VIEWS	0	AZ	06/06/20	ISSUED FOR REGISTRATION			MECHANICAL				
		1	AZ	06/07/20	ISSUED FOR REGISTRATION							
		2	AZ	06/08/18	ISSUED FOR CONSTRUCTION							
		3	AZ	06/09/03	ISSUED FOR CONSTRUCTION							

Propipe Fabricating  
9625 - 144 Avenue  
Grande Prairie, Ab  
PH: (780) 402-3131  
FAX: (780) 402-3130

Propipe Fabricating  
SEPARATOR  
SIZE: 84" I.D. x 26'-0" S/S  
ELEVATION VIEW

SCALE	DRAWN	DATE	PROJECT NO.	JOB NO.	DRAWING NO.	REV.
1:40	AZ	06/06/20	PROPPFC-42	PROPIPE-42-01A-01		3

PDR: 06/03/23 FILE: 144518

06/02/23