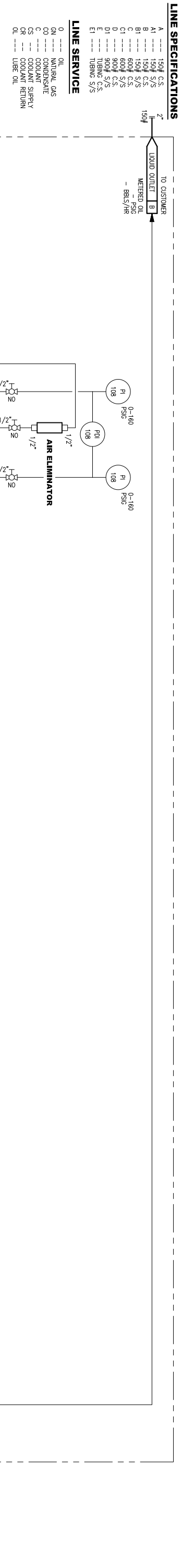


LINE EXAMPLE	3"X1-01-40-4-2-N	INSULATION TYPE	INSULATION THK.	SPECIFICATION	SCHEDULE
LACT PUMP	FLOWSERVE DURCO	MODEL: 1K15X1-628V M3 ST	7.5HP 3PH 230/460V 60HZ	DISCHARGE: 1"	
LACT PUMP MOTOR	TOSHIBA	CAT NO: T252SR44A-P	7.5HP 3PH 230/460V 60HZ	550 W	TEFC
LACT STRAINER	UNC STRAIGHT-THRU STRAINER	2"-150# RF	SS STRAINER BASKET W/ 3/16" PERFORATIONS		
AIR ELIMINATOR	ARISTONING 1.1W	AUTOMATIC AIR VENT VALVE	18 BAR WORKING PRESSURE		
BS&W PROBE	INVALCO BS&W PROBE	MODEL 7300	2"-150# RF		
SAMPLE EXTRACTOR	PARKER SOLENOID VALVE	UNCO 100c SAMPLE REGULATOR			
SAMPLE RECEIVER	UNC 15 GAL SAMPLE POT	W/ 4" OD X 26" S/S TUB	W/ 3/4" S/S COATED 6mil		
SAMPLE CIRCULATION PUMP	METERS LIQUID TRANSFER PUMP				
SAMPLE CIRCULATION PUMP MOTOR	WORLDMIDE A/C MOTOR	MODEL: AT134-36-56B	POWER: SUPPLY TA-1000 PROBE		
POSITIVE DISPLACEMENT ROTARY VANE METER	FMC SMITH METER	MODEL: CP-53	2"-150# RF		
TEMPERATURE AVERAGER	UNCO-ELECTRONOMIC	MODEL: TB-1000	POWER: SUPPLY TA-1000 PROBE & THERMOWELL		



VALVE SYMBOLS

- CONTROL VALVE ACTUATED DIVERTER VALVE (3-WAY VALVE) FLANGED
- CONTROL VALVE BACK PRESSURE VALVE FLANGED
- BALL VALVE MANUALLY OPERATED FLANGED
- BALL VALVE MANUALLY OPERATED THREADED

INSTRUMENT SYMBOLS

- LOCALLY MOUNTED PANEL ACCESSIBLE TO OPERATOR
- DISCRETE INSTRUMENT ACCESSIBLE TO OPERATOR
- DISCRETE INSTRUMENT LOCALLY MOUNTED ACCESSIBLE TO OPERATOR

- NOTES:**
1. ALL WIRING TO BE RUN WITHIN 1/2" RIGID CONDUIT
 2. ALL PIPING 1-1/2" OR SMALLER TO BE SCHEDULE 80 WITH THREADED FORGED STEEL FITTINGS.

NO.	GENERAL NOTES	REFERENCE NUMBER	REFERENCE DRAWING	REV.	DATE	REVISION	DRAWN	CHK'D	APPR.
1.	ALL DIMENSIONS IN INCHES			A					
2.	MATERIAL = ?			B					
3.	GENERAL TOLERANCES = ±			C					
4.				D					
5.				E					
6.				F					
7.				G					

UMC Energy Solutions
since 1966

CLIENT:

RESOURCES

TITLE:

2"-150# ANSI LEASE AUTOMATIC CUSTODY TRANSFER UNIT PIPING & INSTRUMENTATION DIAGRAM

SCALE: N.T.S.

CHECKED: -

DRAWN: DOF

DATE: 7/29/13

SHEET

UMC-50195-PID