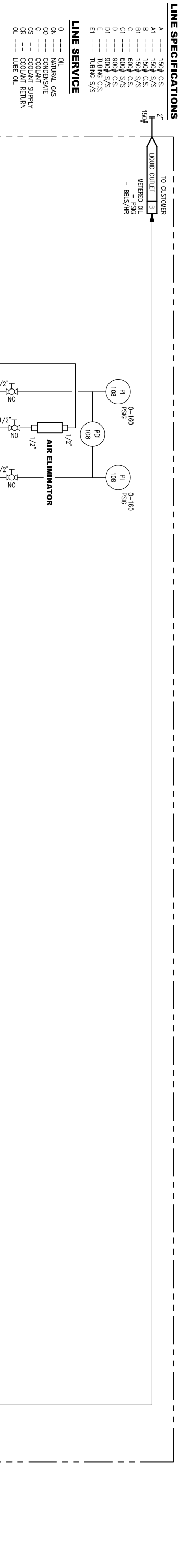


LINE EXAMPLE 3"01-40-A-2-N INSULATION TYPE INSULATION THK. SPECIFICATION SCHEDULE	LACT PUMP FLOWSERVE DURCO MODEL: 1K151-628V M3 ST METER: 629 DISCHARGE: 1"	LACT PUMP MOTOR TOSHIBA CAT NO:7292SR44A-P 7.5HP 3PH 230/460V 60HZ 3500 RPM TEFC	STRAINER UNC STRAIGHT-THRU STRAINER 2"-150# RF SS STRAINER BASKET W/ 3/16" PERFORATIONS	AIR ELIMINATOR ARISTON 1.1W AUTOMATIC AIR VENT VALVE 18 BAR WORKING PRESSURE	BS&W PROBE INVALCO BS&W PROBE MODEL 7300 2"-150# RF	SAMPLE EXTRACTOR PARKER SOLENOID VALVE UNCO 10cc SAMPLE REGULATOR	SAMPLE RECEIVER UNC 15 GAL SAMPLE POT W/ 4" OD X 26" S/S T W/ 3/4" S/S COATED 6mil INTERIOR FINISHED COATED 6mil	SAMPLE CIRCULATION PUMP METERS LIQUID TRANSFER PUMP	SAMPLE CIRCULATION PUMP MOTOR WORLDMIDE A/C MOTOR MODEL: AT134-36-56B 2"-150# RF 3/4 HP 3PH 230/460V 60HZ 3450 RPM TEFC	POSITIVE DISPLACEMENT ROTARY VANE METER FMC SMITH METER MODEL: C2-53 2"-150# RF W/ RIGHT ANGLE DRIVE, VEEDER-ROOT RESISTOR WITH PULSER KIT	TEMPERATURE AVERAGER UNCO-ELECTRONAIC MODEL: TB-1000 POWER SUPPLY TA-1000 PROBE & THERMOWELL
---	---	--	--	--	---	--	---	---	--	--	--



VALVE SYMBOLS

- CONTROL VALVE ACTUATED DIVERTER VALVE (3-WAY VALVE) FLANGED
- CONTROL VALVE BACK PRESSURE VALVE FLANGED
- BALL VALVE MANUALLY OPERATED FLANGED
- BALL VALVE MANUALLY OPERATED THREADED

INSTRUMENT SYMBOLS

- LOCALLY MOUNTED PANEL ACCESSIBLE TO OPERATOR
- DISCRETE INSTRUMENT ACCESSIBLE TO OPERATOR
- DISCRETE INSTRUMENT LOCALLY MOUNTED ACCESSIBLE TO OPERATOR

- NOTES:**
1. ALL WIRING TO BE RUN WITHIN 1/2" RIGID CONDUIT
 2. ALL PIPING 1-1/2" OR SMALLER TO SCHEDULE 80 WITH THREADED FORGED STEEL FITTINGS.

NO.	GENERAL NOTES	REFERENCE NUMBER	REFERENCE DRAWING	REV.	DATE	REVISION	DRAWN	CHK'D	APPR.
1.	ALL DIMENSIONS IN INCHES			A					
2.	MATERIAL = ?			B					
3.	GENERAL TOLERANCES = ±			C					
4.				D					
5.				E					
6.				F					
7.				G					

UMC Energy Solutions
since 1966

13421 N. SYLVANIA AVE
FORT WORTH, TX 76111
(817) 744-8242
FAX (817) 744-8243
www.unc.com

CLIENT: **RESOURCES**

SCALE: N.T.S. DRAWN: DOF DATE: 7/29/13

TITLE: **2"-150# ANSI LEASE AUTOMATIC CUSTODY TRANSFER UNIT PIPING & INSTRUMENTATION DIAGRAM**

SHEET: **UMC-50196-PID**