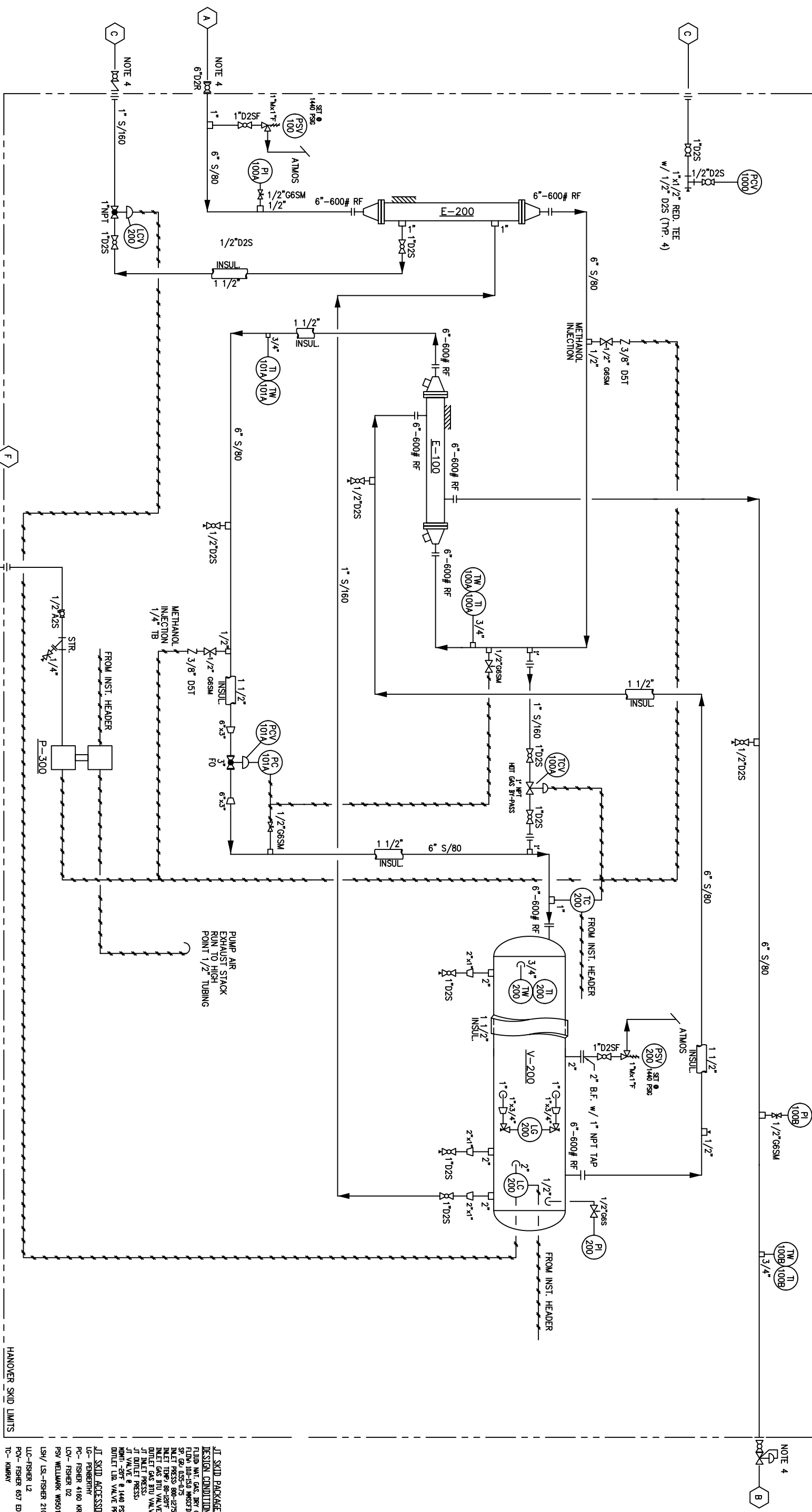


E-100 GAS/GAS EXCHANGER 30'-0" NOMINAL LENGTH SHELL DESIGN: 1440 PSIG @ 125° F/-20°F TUBE DESIGN: 1440 PSIG @ 125° F/-20°F AREA: 1178 SQ. FT.

E-200 GAS/LIQUID EXCHANGER 20'-0" NOMINAL LENGTH SHELL DESIGN: 1440 PSIG @ 125° F/-20°F TUBE DESIGN: 1440 PSIG @ 125° F/-20°F AREA: 34 SQ. FT.

TK-800 METHANOL STORAGE TANK

P-300 METHANOL INJ. PUMP 2-PHASE HORIZ. SEPARATOR 42" O.D. X 15'-0" S/S DESIGN: 1440 PSI @ 120°F/-20°F



NOTE 4

HANOVER SKID LIMITS

JT SKID PACKAGE MODEL HS-JT15B  
DESIGN CONDITIONS  
FLUID: NAT. GAS, AIR, CHLORO  
FLUID: 100-150 WSSSTD  
SP. GR. 0.25-0.75  
INLET PRESS: 800-1275 PSIG  
INLET GAS 310 VALVE,  
OUTLET GAS 310 VALVE,  
JT INLET PRESS,  
JT VALVE @ 1440 PSIG  
DRILL 1/2" VALVE PRESS: 150-200 PSIG

JT SKID ACCESSORIES  
IG- FROBERY  
PC- FISHER 4160 KR  
LC- FISHER 02  
PSV WEILMANN W9501  
LSH/LSL-FISHER 2100 E  
LIC-FISHER L2  
POV-FISHER 657 ED  
TC- KIMRAY

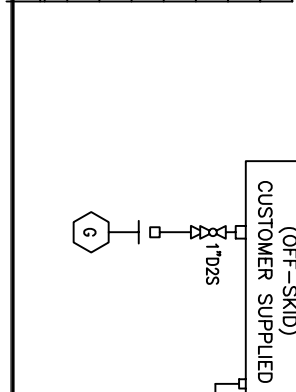
WEIGHTS

VESSEL - 3,000  
SKID - 3,300  
PIPING - 3,750  
PACKAGED - 10,050

NOTE:  
1. APPROX. DESIGN CONDITION RANGE SHOWN, ACTUAL CONDITION TO BE CHECKED BY ENGINEERING.  
2. ALL INSULATION IS 1 1/2" POLYURETHANE FOAM.  
3. INCLUDE LOW POINT DRAINS.  
4. BY CUSTOMER.

CUSTOMER CONNECTION SCHEDULE

MARK	SIZE	QTY.	RATING	SERVICE
(G)	1"	ONE	PIPE	METHANOL DRAIN / FILL
(F)	3"	ONE	PIPE	METHANOL TANK FILL
(E)	1/2"	ONE	FNPT	METHANOL INJECTION INLET
(D)	1"	ONE	FNPT	INSTRUMENT GAS SUPPLY
(C)	1"	ONE	FNPT	LIQUID OUTLET
(B)	6"	ONE	LB. RF	GAS OUTLET
(A)	6"	ONE	LB. RF	GAS INLET



REVISIONS

REV.	DESCRIPTION	DATE	BY	CHK
0	RELEASED FOR CONSTRUCTION			

TOLERANCES

CUTS	ANGLES	WELD ASS'Y.
±1/8"	±1/2°	±1/4"

THIS DRAWING IS THE PROPERTY OF EXTERRAN AND IS NOT TO BE USED OTHER THAN THAT FOR WHICH IT IS SPECIFICALLY FURNISHED.

Edited by: Groussard  
Jul 28, 2009 - 1:06pm  
File Name: HANO-15MMJTSA-V2.dwg

APPROVED

DATE

EXTERRAN

1114 HUGHES ROAD  
Broussard, Louisiana 70518 (337) 365-6170

STOCK  
PN HANO-15MMJTSA-V2

Mechanical Flowsheet for Stock 5MM JT Skid

DRAWING NO. HANO-15MMJTSA-V2-400

DATE 01/15/07

NO. REVS 1

REV. 1 OF 1