



Passion for Developing the Future

PMG PA Corp. EMS Scholarship

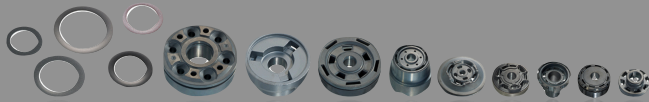
PMG Corporation - Who we are:

PMG PA Corporation is part of a global manufacturing chain, operating for more than 60 years, now in 8 plants globally, manufacturing over 500,000,000 powder metal automotive parts, and employing over 1700 employees worldwide.



From Worldwide to Philipsburg, Pennsylvania

Beginning in 1960, The Sinterstahl Company is founded by Plansee and Thyssen in Füssen (Germany). Expanding in 1991 by acquiring renowned company Polmetasa (Spain). Plans and construction of a plant in Philipsburg begins in 2003, and is dedicated to production of internal shock absorber parts. PMG operates plants and offices in Spain, Romania, USA, China, Germany, and Mexico.



Passion For Simply Perfect.

“We strive to create value. For our customers, For our Employees, For our Company, and for Future Automotive Generations”... And now, for their community. PMG’s goal is to shape the future of mobility, from becoming a member of a strong team, student internships, and professional level jobs worldwide, PMG supports local organizations in the forward progression in youth career development.



Passion for Common Values and Principles. - Community Giving -

“In the ever changing world, it is vital to define who you are, where you want to go, and what attitude governs your action. We have clearly defined our vision and the conventions that guide the way we act. This is what we go to work for every day. This is the standard to which our partners hold us, and this is how the future is created.”

PMG offers this scholarship to provide that same foundation, and future goal, for its community in which they manufacture in.



Moshannon Valley EMS Education Institute has teamed up with PMG PA Corporation and their lead staff at their Philipsburg manufacturing plant to offer scholarships to individuals between the age of 16 and 22, for partial tuition assistance to help young adults gain EMT certification that can lead to many job opportunities.

To submit application for funding, you must:

- Be between the ages of 16 and 22 and complete the application
- Complete an essay on why you wish to be awarded these funds, and how you plan to use your certification for your career path or for community wellness
- Submit your application and Essay to the MVEMS Education Coordinator to be forwarded on to the Youth Impact Committee for determination.

Application can be found at:

www.mvems23.com

Under the Education Tab,
choose “Student Financial Aid”.

Submit Completed Applications/Essay to:
tthomas@movalleyems.com